



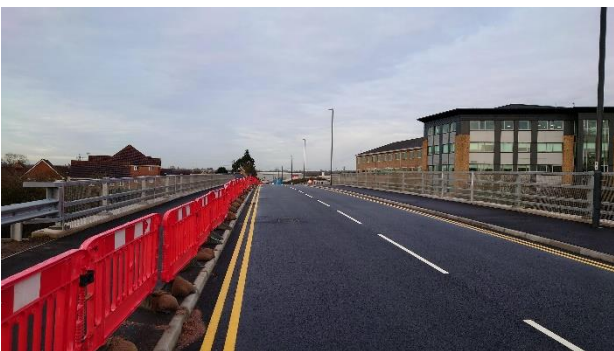
St George’s Way eastern approach to Bermuda Bridge

The contractor has commenced remedial works on the gabion wall in St George’s Way by Bermuda Park Station which is planned to be finished by end of February 2024. Other remedial works have been identified and are planned for completion by mid-March 2024. The new road surfacing and road markings have been added.



Eastern embankment approach to Bermuda Bridge

Works on eastern approach was completed and has been opened for pedestrians and cyclists since October 2023. The final road surface course and road markings were installed in January 2024. The road is planned to be opened if safe to do so when the works in St George’s Way and Bermuda Road / The Bridleway by Phoenix Centre are completed.



Bermuda Bridge Works

Similarly, works on Bermuda Bridge were completed in January 2024 and has been opened for pedestrians and cyclists since October 2023. Bermuda Bridge is planned to be opened, if safe to do so, and when the works in St George’s Way and Bermuda Road / The Bridleway by Phoenix Centre are completed.

Western embankment approach to Bermuda Bridge

Works on the western approach up to its junction with The Bridleway was completed and has been opened for pedestrians and cyclists since October 2023. The final road surface course and road markings were installed in January 2024. The road is planned to be opened if safe to do so when the works in St George’s Way and Bermuda Road / The Bridleway by Phoenix Centre are completed.



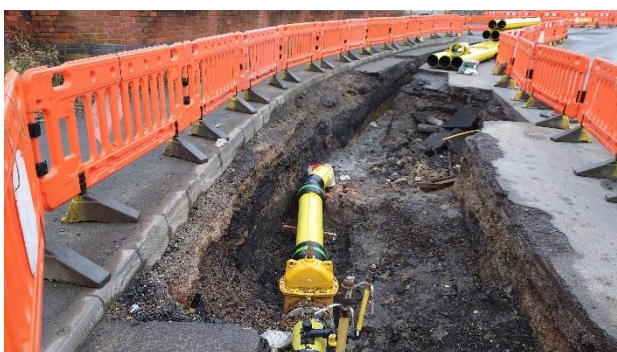
Barling Way and The Bridleway

A new post and rail timber fence denoting the highway boundary along both sides of the footway at the southern end of Barling Way is being installed. Final footway surfacing is planned to be installed when the roadway along The Bridleway and Bermuda Road by The Phoenix Centre is being constructed.



Road works along Bermuda Road

Works on the construction of new bus stop and road layout by Phoenix Centre on-going since the first week of December 2023. Traffic management installed along the southern side of Bermuda Road opposite the Phoenix Centre to enable drainage and roadway works to commence at its junction with Bermuda Village.



CADENT works along Bermuda Road
CADENT have continued installing a new gas main along Bermuda Road to connect to the new governor by Phoenix Centre and an existing gas main by the junction with Hazel Way. These works are planned to be completed by mid-February 2024.

