

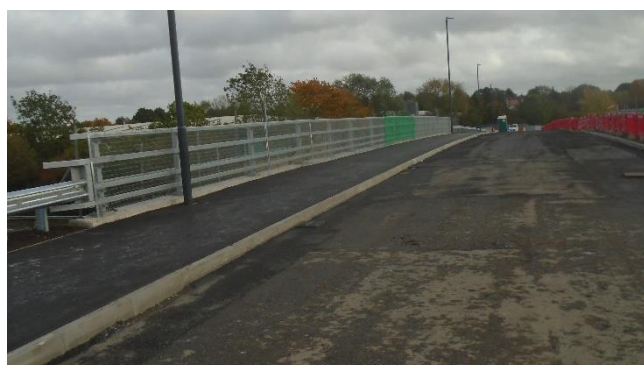


St George’s Way eastern approach to Bermuda Bridge

Contractor has commenced works on St George’s way to prepare the route in readiness to open the Bermuda Bridge to motorised vehicles. New tarmac will be laid at the entrance to Univar upon completion of kerbing and iron works.

Eastern embankment approach to Bermuda Bridge

The southern footway on Bermuda Bridge has been completed and was opened for the use of pedestrians and cyclists on 28th October 2023. Works on laying new tarmacadam surfacing in the carriageway will be completed upon completion of the works in St George’s Way.



Bermuda Bridge Works

Works on the bridge are near completion new waterproofing and tarmacadam binder courses have been laid on the carriageway. Carriageway final surface course and road markings will be installed prior to opening the bridge to motorised vehicles.

Western embankment approach to Bermuda Bridge

Earthworks along the southeast section of the western approach embankment are completed and new safety barrier is near completion in readiness to construct the footway and carriageways. A new filter drain is currently being installed at the foot of the embankment to manage rainwater run-off whilst new vegetation becomes established.





Barling Way and The Bridleway

Backfilling works in Barling Way are near completion. STW need to adjust their apparatus to new footway levels to enable the footway in Barling Way to be completed. Whilst backfilling of The Bridleway has been completed in readiness for new carriageway construction.



Relocation of Gas Governor by Phoenix Centre
Works by CADENT to relocate an existing gas governor in the island close to the Phoenix Centre to a nearby location outside of the proposed new road alignment have continued. These works are planned to be completed by mid-November 2023, which will then enable the construction of new bus stop and road layout by Phoenix Centre.



Works at bend in Bermuda Road by Hazel Way

A shallow gas main has been located in trial holes which will need to be lowered or diverted to make way for the new road layout in the area. CADENT will commence these works upon completion of the works by Phoenix centre. The new road layout will then be constructed following completion of the diversion of the shallow gas main.

