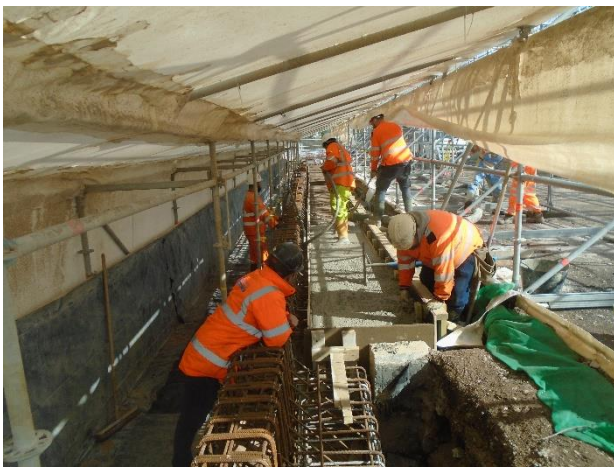


### Eastern embankment approach to Bermuda Bridge

Works to the eastern embankment approach to Bermuda Bridge require construction plant to stop using this section of road to access the bridge and the ongoing works on the bridge to be completed in advance of the final surface course and road markings being installed.



### Construction works on the Bermuda Bridge edge beam

Construction works on the northern and southern bridge edge beams is continuing with the installation of new reinforcement and new concrete poured to the bridge deck to reconstruct the edge beams so new safety barrier is installed.

### Western embankment approach to Bermuda Bridge

Area to the south of the western embankment approach to Bermuda Bridge has been cleared in readiness to undertake works on the extension of the gas vent trench (GVT).



### **Baring Way Works**

Work on the protection to the existing utilities in Baring Way with reinforced concrete slabs and new large concrete manholes for access to utility apparatus together with ducting for the gas and electrical supplies is near completion. The area can be backfilled in readiness for the GVT extension works once the protection works is completed.



### **Footway & carriageway works on The Bridleway**

Two-way traffic is currently running along The Bridleway which will be reduced to one lane when work commences on the north side of The Bridleway to extend the gas vent trench (GVT). Footways & carriageway have been tarmacked on both the southern & northern sides of The Bridleway in readiness for final surface course.