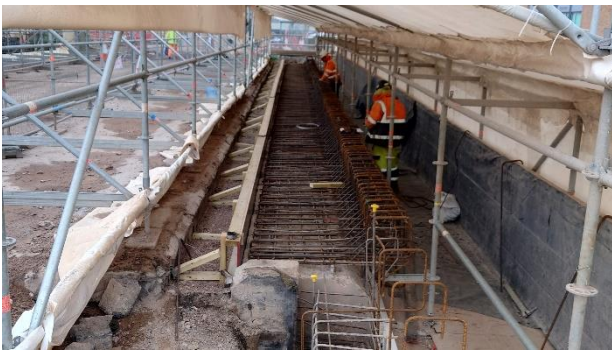


### Eastern embankment approach to Bermuda Bridge

Works to the eastern embankment approach to Bermuda Bridge require the ongoing works on the Bridge to be completed and for construction plant to stop using this section of road to access the bridge before final surface course and road markings can be installed.



### Construction works on the Bermuda Bridge edge beam

Construction works on the northern and southern bridge edge beams is continuing with the installation of new reinforcement and formwork constructed to pour new concrete to reinstate the edge beams in readiness to new safety barrier.

### Western embankment approach to Bermuda Bridge

Area south of western embankment approach to Bermuda Bridge cleared in readiness to undertake works on the extension of the gas vent trench (GVT).

Once completed the excavation for GVT extension across The Bridleway can be backfilled to continue road construction.



### Baring Way Works

Work has commenced on protecting the existing utilities in Baring Way with 2.7 x 5m long reinforced concrete slabs and new large concrete manholes for the STW apparatus together with ducting for the gas and electrical supplies. Once the protection works is completed then the area can be backfilled in readiness for the GVT extension works.



**Northern verge of the Bridleway**

Northern Verge of The Bridleway opposite Templar Drive has been cleared in readiness to commence GVT extension works

**Footway & carriageway works on The Bridleway**

Footways & carriageway tarmacked on both southern & northern sides of The Bridleway is complete in readiness for final surface course. Currently two-way traffic is running but this will be reduced to one lane when work commences on the north side of The Bridleway to extend the gas vent trench (GVT)