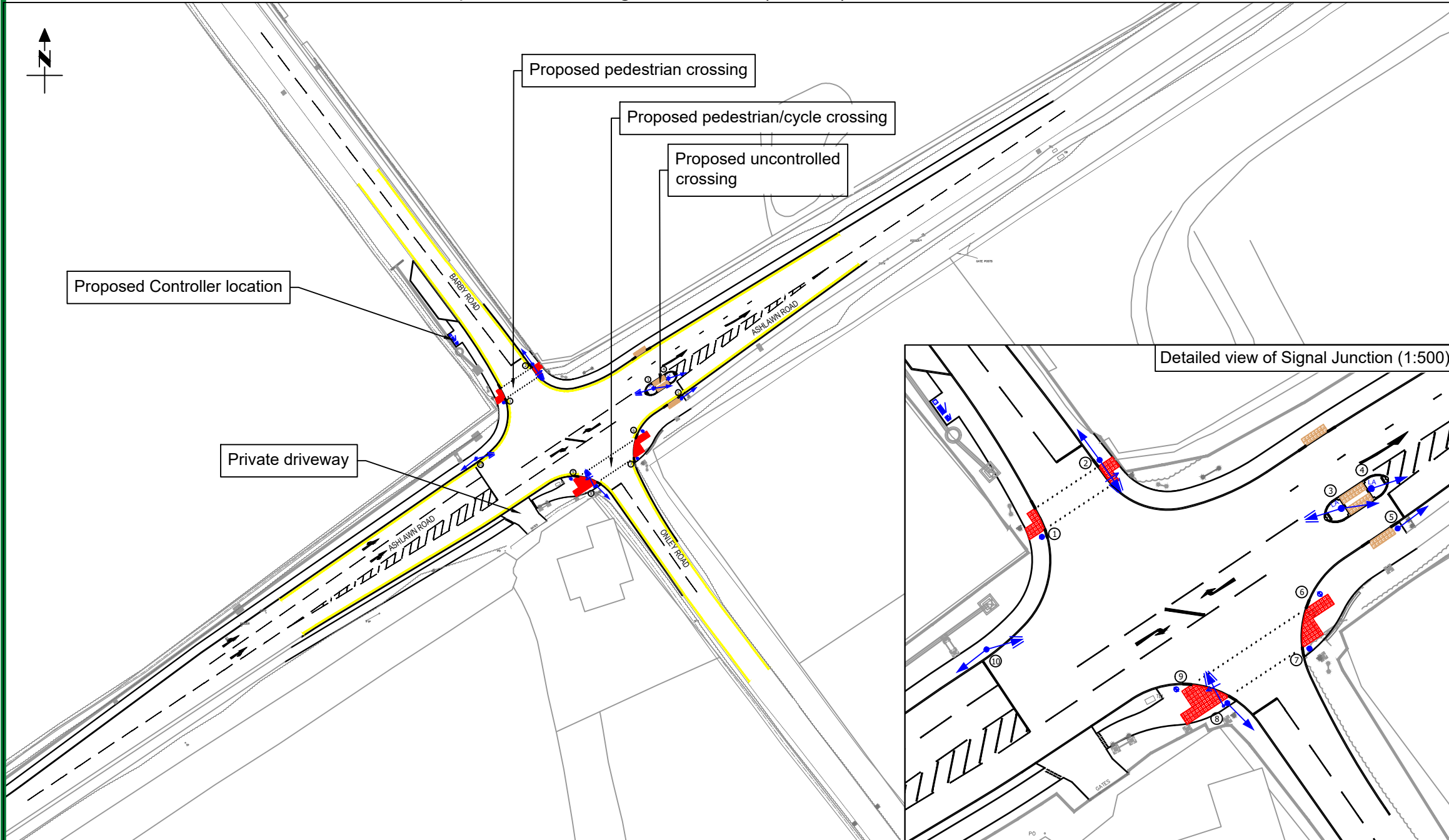


Proposed Traffic Signal Junction (1:1000)



NOTES
 All traffic signal equipment and road markings shown are indicative and may be subject to change during detailed design or during installation due to site constraints.

A	EM	To include additional Aspects	06/01/23
REV	DRN	AMENDMENT	DATE



Engineering Design Services
 Environment Services, Communities
 Shire Hall Post Room
 Warwick
 CV34 4SP
 Tel : 01926 410410
 Web : www.warwickshire.gov.uk



C:\DesignServices\24.2\277\3 Drawings\3-01 AutoCAD\24.2---277-004.dwg

PROJECT
 B4429 - Ashlawn Road/Barby Road
 Traffic Signal Junction

TITLE
 Public Notice Plan
 Purpose of Drawing: Consultation

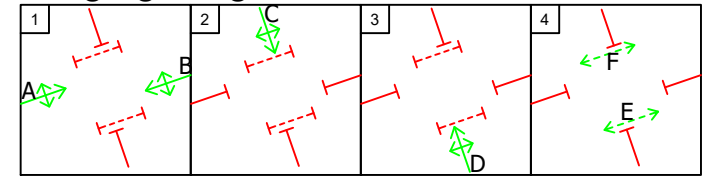
Drm	EM	Ck'd	GD	App'd	GD
Date	08-01-20	Date	06-01-23	Date	06-01-23

Status **Approved (Level 3)**

Scale **1:500** Sheet size **A3**

DRG. NO. **24.2---277-004** Rev. **A**

Staging Diagram



Key

- Traffic signal equipments mounted on poles
- Traffic Signal Controller Approximate dimensions: 73cm width x 43cm depth x 116cm height
- Traffic Signal Controller Feeder Pillar (FP) Approximate dimensions: 36cm width x 25cm depth x 60cm height
- Red Tactile Paving (400mm x 400mm)
- Buff Tactile Paving (400mm x 400mm)
- Proposed Prohibition of waiting - double yellow lines

© Crown Copyright and database right 2019. Ordnance Survey 100019520.

Frame V2.8