

A444 New Vehicle Restraint System (VRS) or Crash Barrier

Works have progressed well on the installation of the New Vehicle Restraint System (VRS) or Crash Barrier along the northbound side of the A444 Griff Way. It is anticipated the VRS works will be completed before Christmas enabling the current traffic management to be removed.

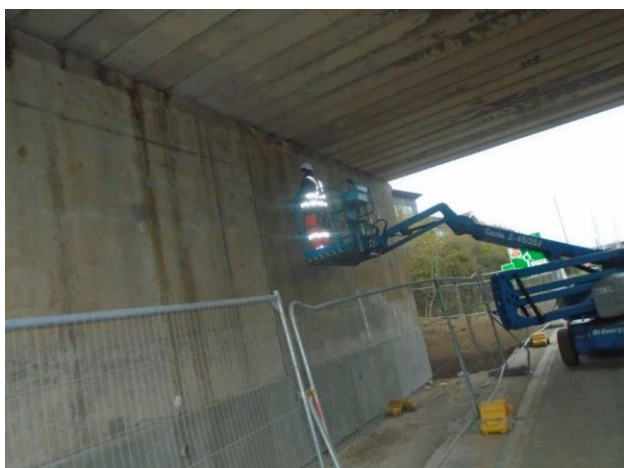
The new fence is a corrugated rail and z-post system which is used to deflect out of control or errant vehicles back onto the road protecting road users from hazards.



Concrete repair works to western abutment to Bermuda Bridge

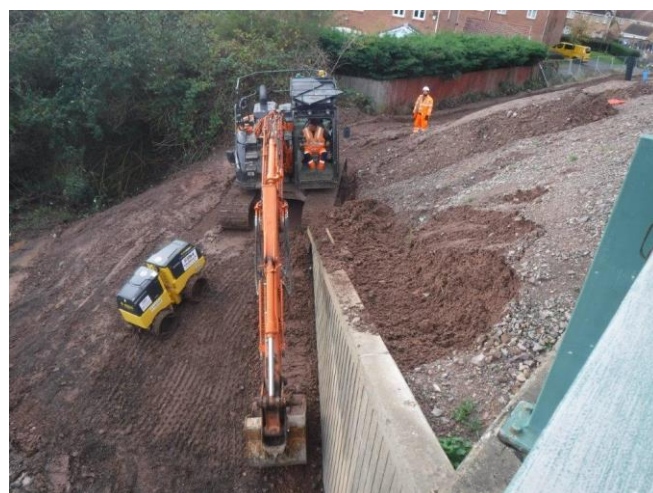
Works continued to repair historic cracks with hand applied repair mortar in the concrete abutment walls to the Bermuda Bridge on the A444 Griff Way.

As soon as these are completed, we can then install VRS system to protect the abutment walls from errant vehicles.



Earthworks Wrap to Wingwalls on Southern side of Western approach to Bermuda Bridge

Works continuing to prepare the wing wall earthworks wrap in readiness for topsoiling and to complete the embankment profile on to the A444 Griff Way along the eastern and western approaches to Bermuda Bridge has been completed.





The Bridleway works on the southern footway & carriageway

Traffic has been switched on to the northern side of The Bridleway and works have continued along the southern side to install drainage kerbs in readiness to construct the road and footway modifications. It is anticipated these works will be completed before Christmas enabling the current traffic management to be switched off during the Christmas holidays.