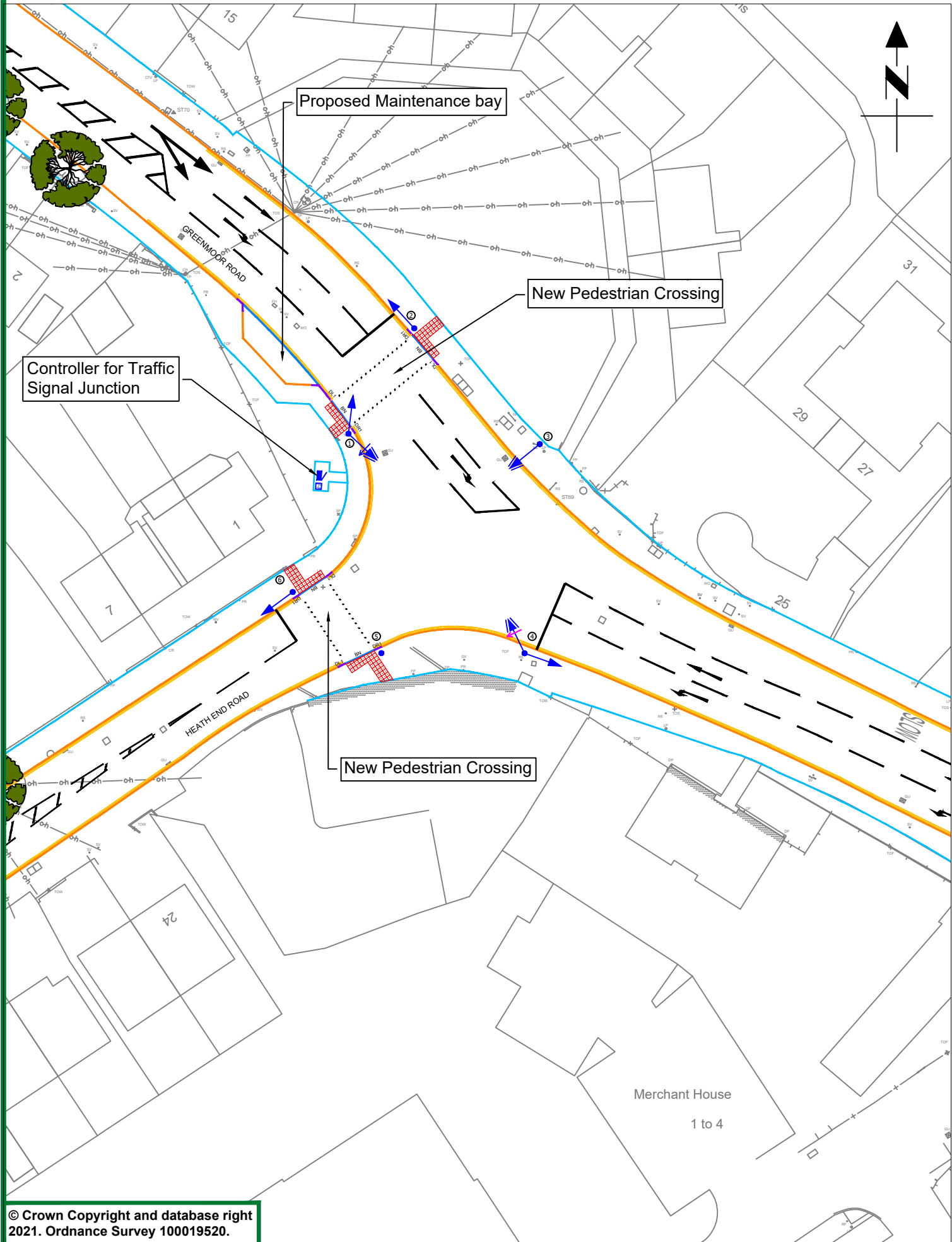







# Proposed Traffic Signal Junction



-  Traffic signal head mounted on pole
-  Traffic Signal Controller Approximate dimensions: 73cm width x 43cm depth x 116cm height
-  Traffic Signal Controller Feeder Pillar (FP) Approximate dimensions: 36cm width x 25cm depth x 60cm height
-  Red Tactile Paving
-  Existing double yellow lines

## NOTES

All traffic signal equipment and road markings shown are indicative and may be subject to change during detailed design or during installation due to site constraints.

REV	DRN	AMENDMENT	DATE



Engineering Design Services  
 Environment Services, Communities  
 Shire Hall Post Room  
 Warwick  
 CV34 4SP  
 Tel : 01926 410410  
 Web : www.warwickshire.gov.uk



C:\DesignServices\9.2\A444\051\3 Drawings\3-01 AutoCAD\9.2-A444--051-1218.dwg

PROJECT  
**A444 - College Street Island  
 Junction Improvements**

TITLE  
**Public Notice Plan  
 Heath End Rd/Greenmoor Rd  
 Purpose of Drawing: Consultation**

Drm	EM	CK'd	NC	App'd	NC
Date	01-12-21	Date	03-12-21	Date	03-12-21

Status  
**Approved (Level 3)**

Scale  
**1:500**

Sheet size  
**A3**

DRG. NO.  
**9.2-A444--051-1218**

Rev.  
**-**