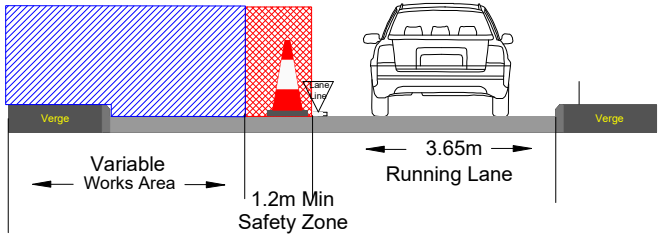
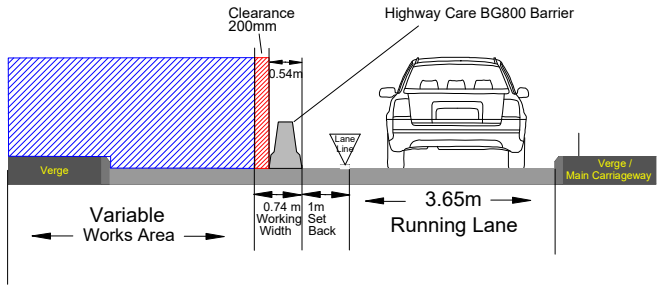


Exit Slip Lane 1



Exit Slip Lane 1 TVRS



Impact Speed (mph)	Lead In (m)	Lead Out (m)	Setback (mm) Relaxed	Setback (mm) Desirable	Clearance (mm)	Working Width (mm)
70	36	24	600	1000	200	W2< 800mm

DETAIL B

Single/Dual carriageway 50mph or more - 750mm cones, spacing 1.5m. relaxation 3m.

Notes:
1) During darkness, warning lights to BS EN 12352:2006 should be provided in accordance with Table A1.3 (Appendix 1).
2) 45° tapers have 1.5m spacing, no relaxations.
3) On motorways and NSL AP duals with hard shoulders, 1m cones will be required for both standard and relaxation works for lead tapers and the facing wall of lane changes.

DETAIL C1

Single/Dual carriageway 50mph or more - 750mm traffic cones.

Notes:
1) During darkness, warning lights to BS EN 12352:2006 should be provided in accordance with Table A1.3 (Appendix 1).
2) For relaxation to Detail C1 see Table A1.3 (Appendix 1).

NOTES:

- All Traffic Management will be set out in accordance with the requirements of the Traffic signs Manual, Chapter 8, 2009.
- On carriageways of 50mph and above all initial tapers and stepped tapers will be highlighted at all times with Backlit sequentially flashing lights. On carriageways below 50mph Backlit sequentially flashing lights may be omitted subject to risk assessment.
- Any sign reference Numbers used in this drawing refer to, either the diagram numbers contained within the Traffic Signs Regulations and General Directions 2016 (TSRGD 2016); or when used as a sign authorised under Schedule 13 part 9 of these regulations, a diagram from Schedule 12 of the 2002 Regulations (TSRGD 2002).
- All Diversion signing will be fully installed before any closure is brought into effect.
- All sign frames will be secured with sand bags.
- Exact locations of signs are to be determined on site and will be positioned as to not obstruct any other sign, footpath or visibility.
- Sign Diagram 7001-3. Will be installed prior to the installation and removal of roadworks.
- The Inner Boundary of the safety zone is omitted for Clarity but is to be marked with barrier in accordance with TSM Chapter 8 at the appropriate distance for the speed of carriageway.

KEY

- ⌋ Traffic sign
- Works Area
- Lead in / Departure Zone
- Traffic cone line
- Temporary Vehicle Restrain System

Colas have produced this proposed traffic management layout in accordance with current guidelines and regulations. It is the Principle Contractor's responsibility to ensure that all required temporary traffic orders are in place to meet these proposed layouts. This drawing is a proposed layout and Colas take no responsibility and do not indemnify the design unless formally agreed otherwise. The Principal Contractor must approve the drawings prior to the layout being installed.

Revision	By	Checked	Approved	Date	Description

Client



Project

A46 Stoneleigh Junction Improvement Scheme

Drawing

A46 S/B Exit Slip
Lane 1 Closure - TVRS

Drawn by	MO	Date:	08/04/2021
Checked by	GJ	Date:	08/04/2021
Authorised by	Approver	Date:	08/04/2021

Drawing No.	Revision
TM2115-051	A

Drawing Scale: NTS Plot Scale: 1:1

Do Not Scale From This Drawing

Sheet size A3