

# FUN WITH FIS

## Activity book



**SAFE**



**HAPPY**



**HEALTHY**



**HEARD**



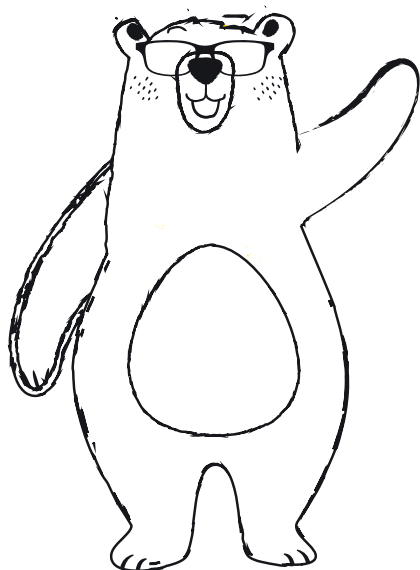
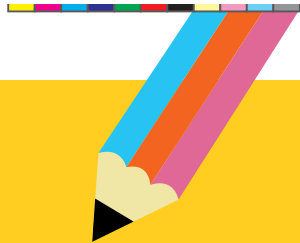
**SKILLED**



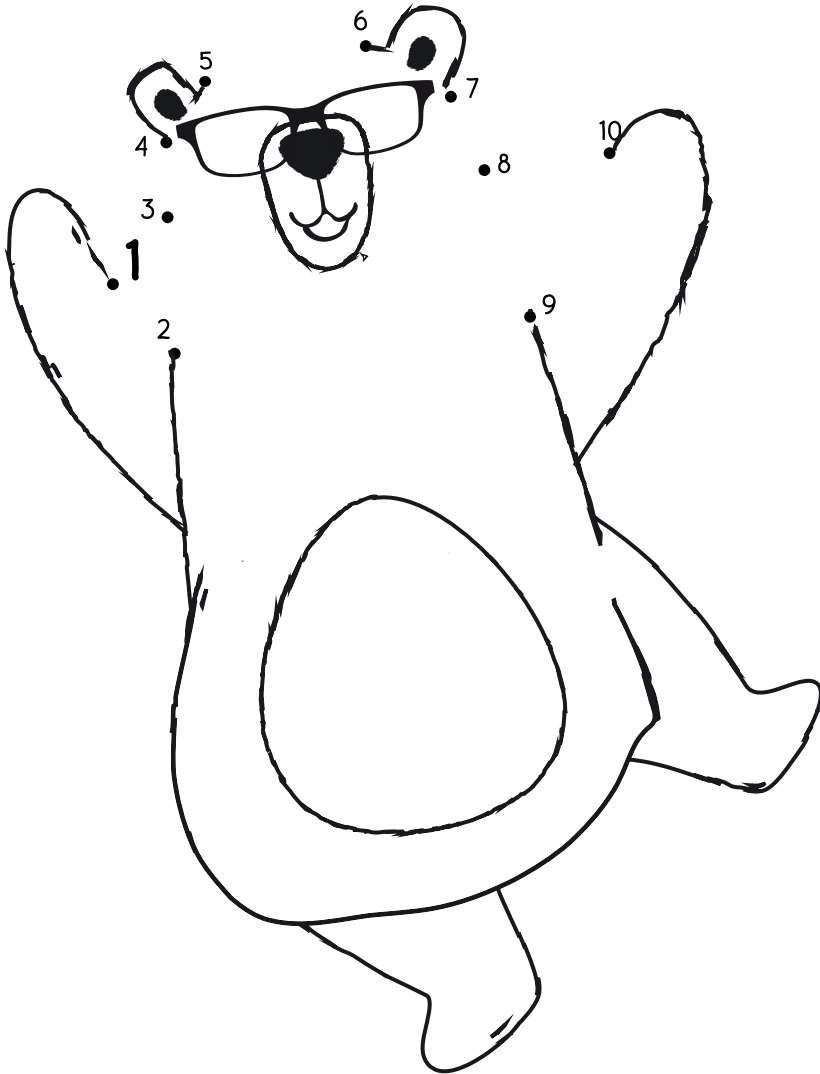
**Warwickshire**  
County Council



# Colour your favourite Child Friendly bear

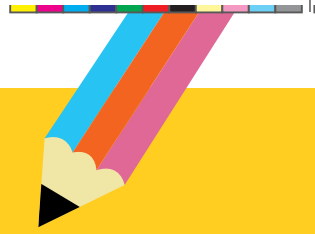


# Dot to Dot



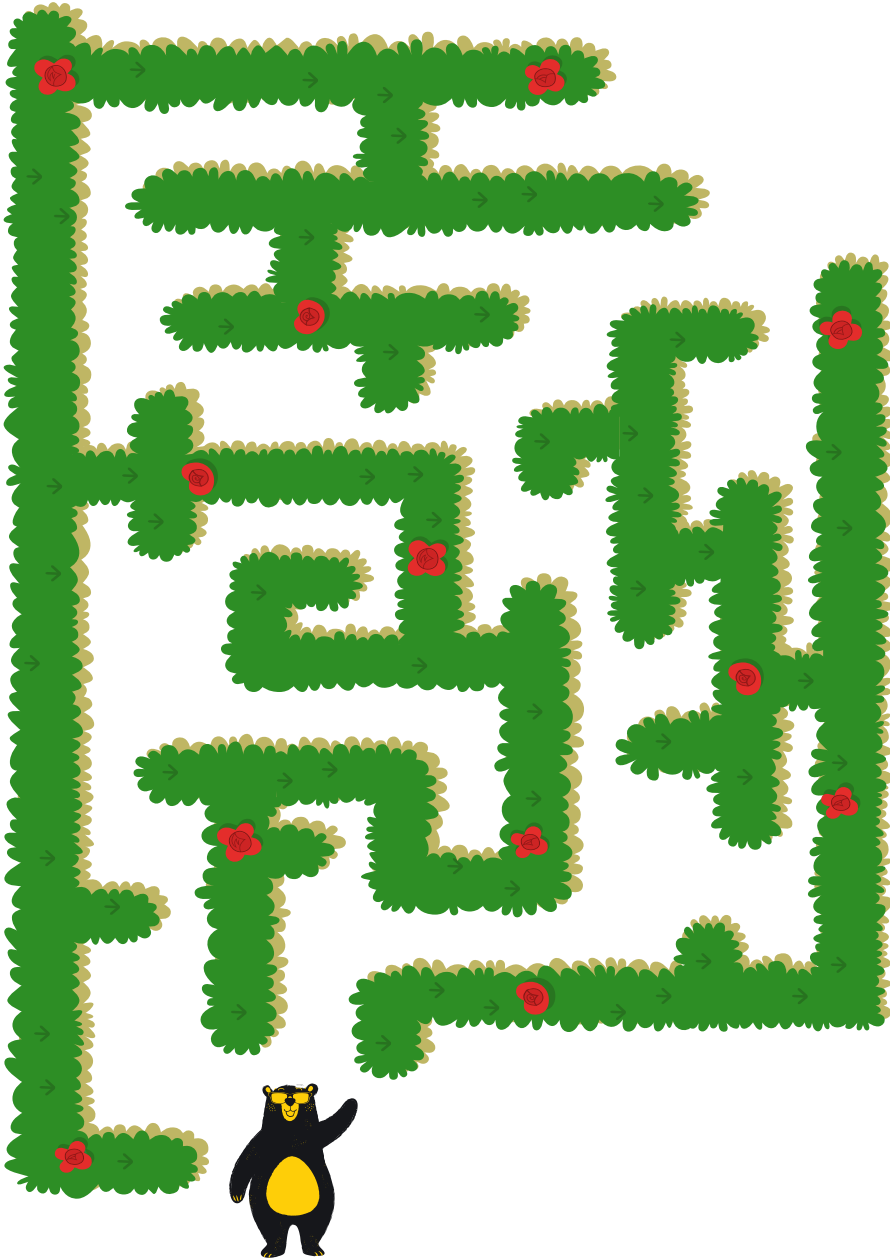
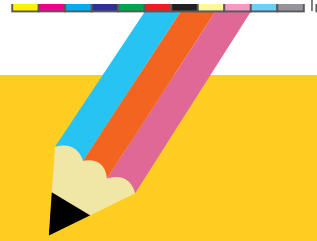
# Odd one out

Look carefully at our lovely Child Friendly Warwickshire bears! Can you spot the odd one out?



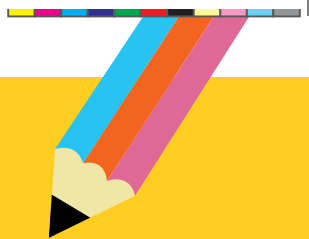
# Forest maze

Can you help our little bear find his way through the maze to his favourite forest?



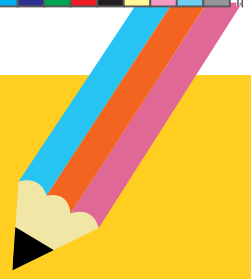
# Spot the difference

Look carefully at these pictures.  
Can you spot 6 differences?



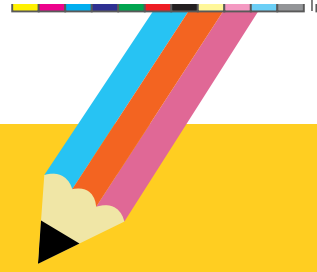
# Where's Child Friendly Warwickshire Bear?

Can you find the 5 Child Friendly Bears?



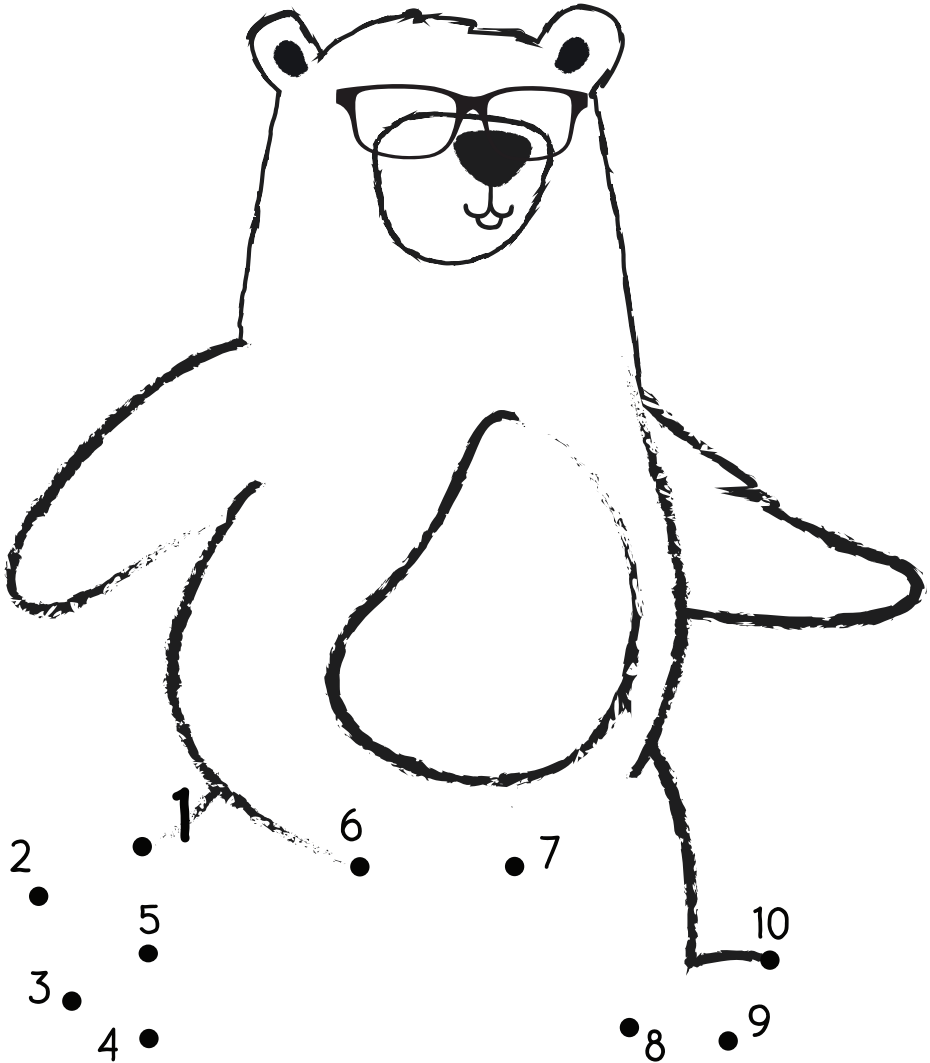
# Odd one out

Look carefully at our lovely Child Friendly Warwickshire bears! Can you spot the odd one out?



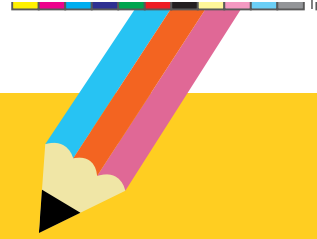


# Dot to Dot



# CFW Wordsearch

Can you find the hidden magic words?



J	Y	Y	V	O	I	C	E	B	S
A	E	P	Y	P	E	V	F	E	K
D	Y	B	P	H	O	E	T	A	I
Y	R	L	K	A	T	H	S	R	L
L	Y	A	D	P	H	L	X	H	L
I	V	K	E	N	C	C	A	Z	E
M	E	O	W	H	E	H	N	E	D
A	G	F	W	Q	P	I	Y	U	H
F	G	O	A	X	P	L	R	T	Q
C	O	Z	I	S	S	D	M	F	E

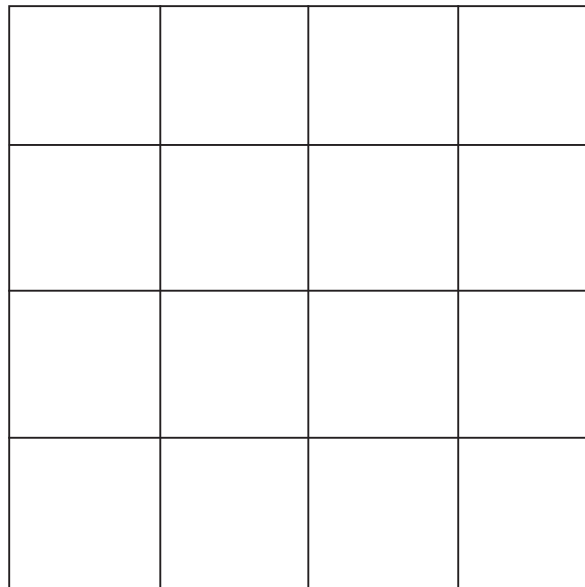
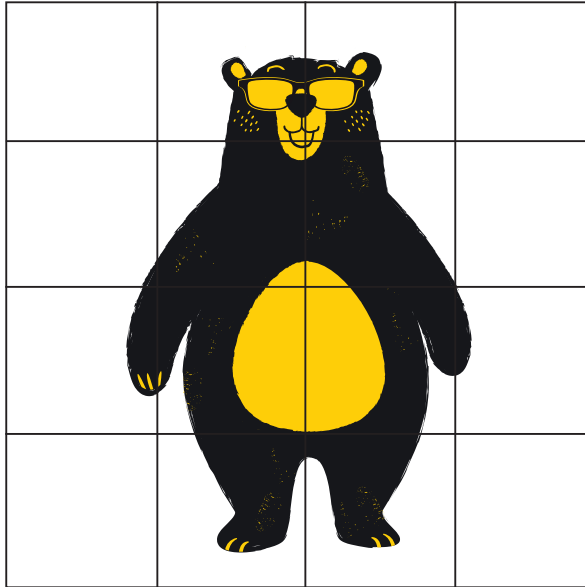
Skilled  
Happy

Healthy  
Heard

Safe  
Bear

# Copy the bear

Use the squares to help you.



# WARWICKSHIRE FAMILY INFORMATION SERVICE



Scan the QR code or visit:  
[www.warwickshire.gov.uk/childrenandfamilies](http://www.warwickshire.gov.uk/childrenandfamilies)

for a wide range of safe, accurate and up-to-date information including the Warwickshire childcare finder, parenting courses, workshops, support services and much more.



For updates on new support groups, courses, events and information to support you and your family, **scan the QR code** or visit:

[www.warwickshire.gov.uk/parentupdates](http://www.warwickshire.gov.uk/parentupdates)  
to sign up to the weekly Family Information Service newsletter.

Speak to a member of the Family Information Service, freephone **0800 408 1558** (available **9am to 5pm** Monday to Friday) or email [fis@warwickshire.gov.uk](mailto:fis@warwickshire.gov.uk)



@WarksFIS



@WarwickshireFIS

