

Warwickshire's Supported Internships Fair

Thursday 14 March, 3pm – 7pm

Eliot Park Innovation Centre, Nuneaton



What to expect

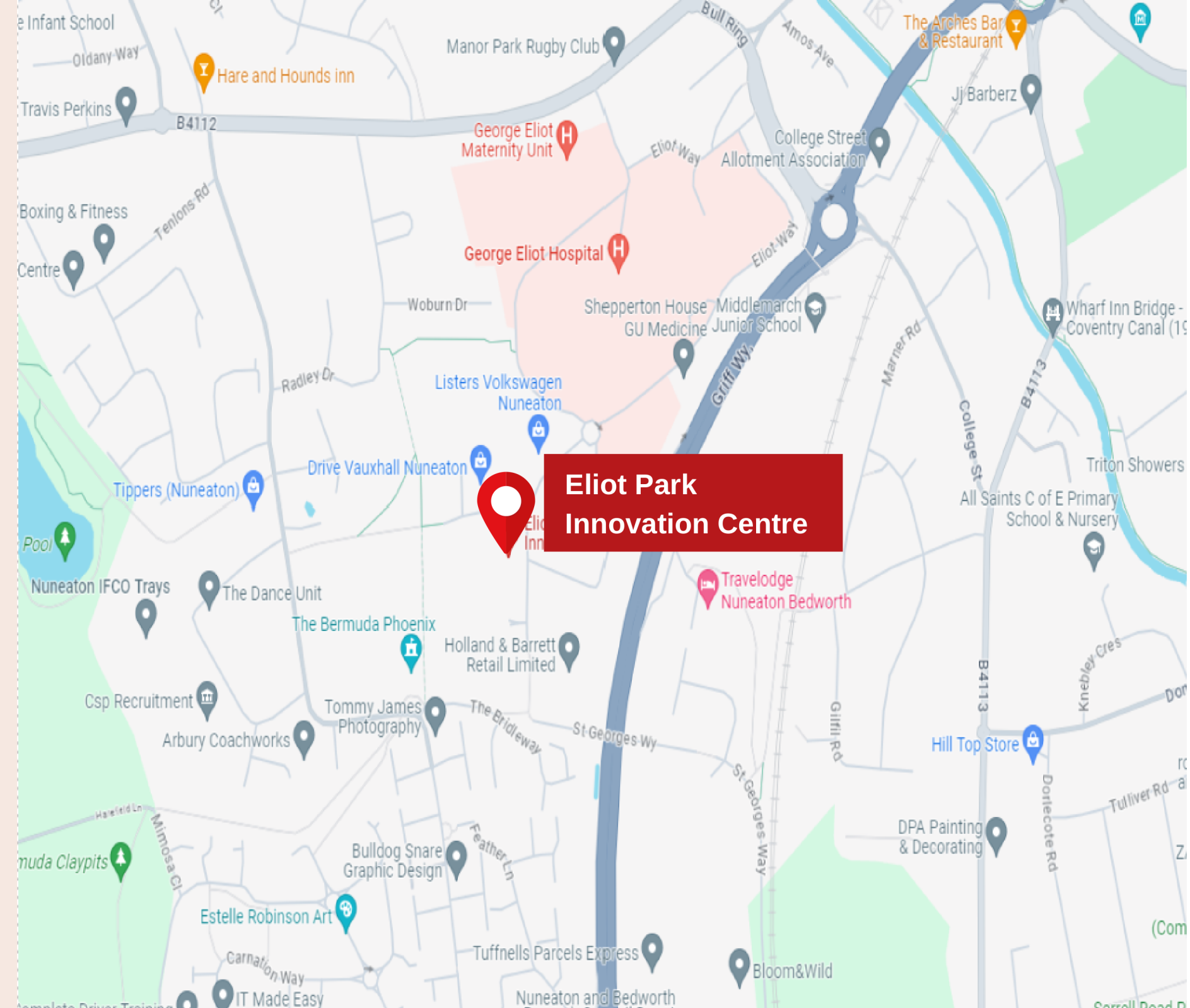
A guide to help you plan ahead

Getting there

Eliot Park Innovation Centre (EPIC) is located close to the town centre of Nuneaton and to the George Eliot Hospital.

It is easily reached from the M6, M1, M42 and M5 motorways and is approximately 2 miles from Nuneaton Train Station.

Bus routes are available: 1, 2, 20, 56, 78, 78A, 79, 79A.



Eliot Park Innovation Centre (EPIC)
4 Barling Way, Nuneaton
CV10 7RH

When you arrive

You can use either one of the two entrances to the Innovation Centre - the main entrance at the front of the building or the rear car park entrance.

Anna will be at the main entrance to greet you and sign you in. She will ask you to write down your name, date of birth and phone number.

This is
Anna



Main front entrance



Rear car park entrance



The event will be held on the ground floor and is fully accessible.

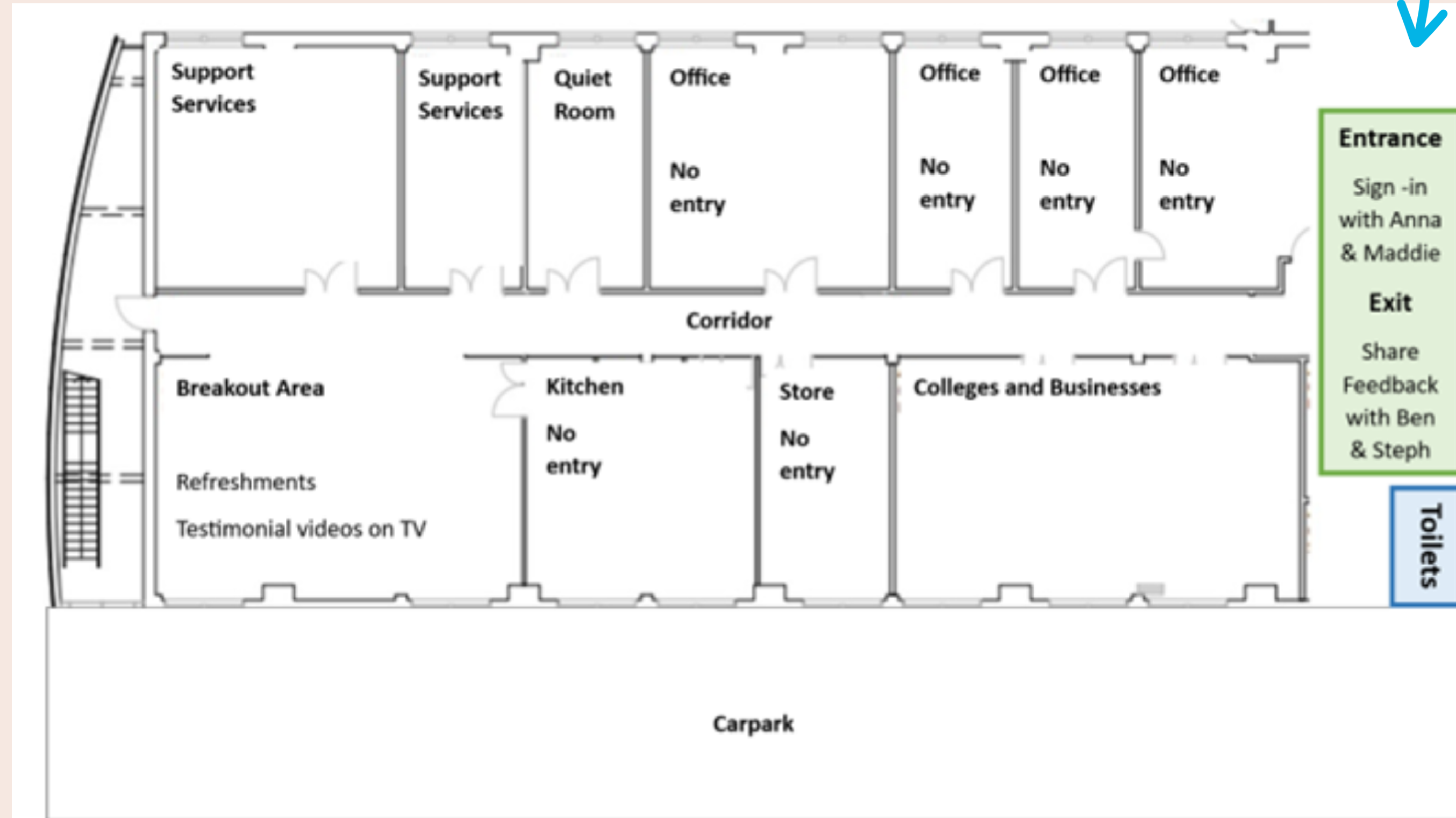
Floor plan

The fair will be spread out across different rooms off the main corridor of the Innovation Centre on the ground floor.

Here's a floor plan to show you what you will find where.



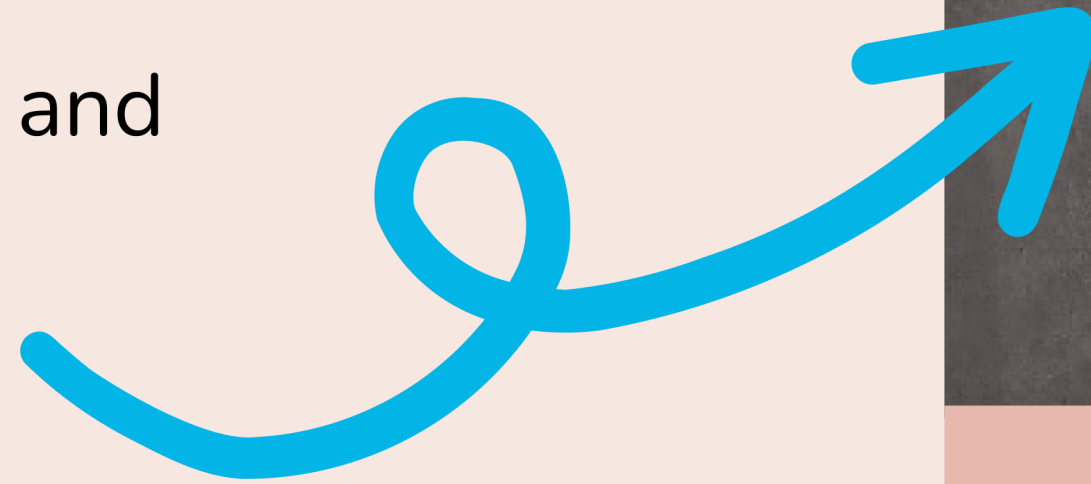
You will be directed to the main corridor when you arrive.



Toilets

When you arrive you will be directed to the main event area and shown where you can find the toilets.

There are male, female and accessible toilets.



Event rooms

This room is where you will find the colleges and businesses.

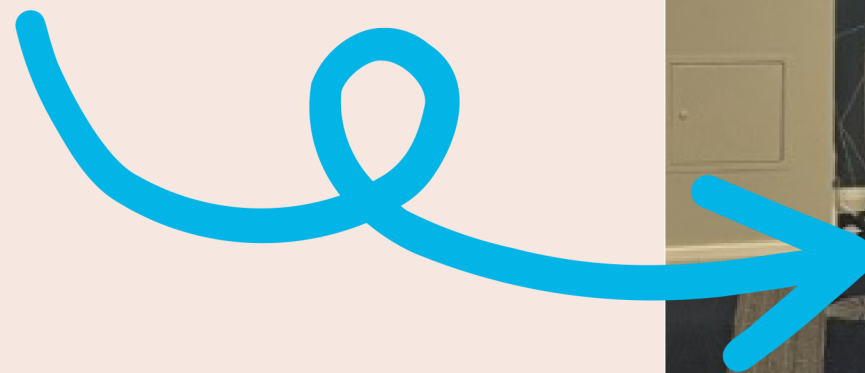
These two rooms are where you can speak to different support services including Warwickshire Supported Employment Service and Prospects.



Quiet space

If things get a little too much, you may want to take some time to sit quietly.

This room is a quiet space you can go to.

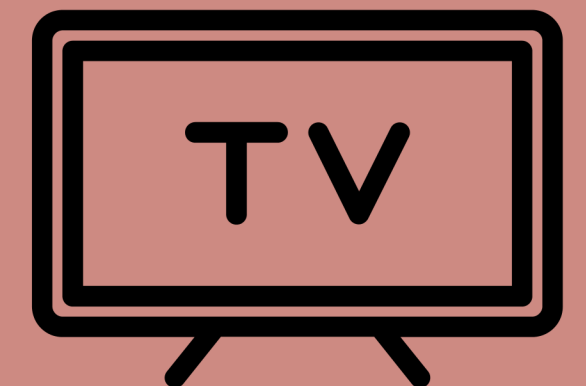


Refreshments

There will be a break out area with refreshments available.

Here you can find a space to sit and have a drink and a piece of cake.

You can also watch some videos to hear from young people, parents, carers, colleges, and businesses about their experiences of Supported Internships.



Tell us what you think

We hope you find Warwickshire's Supported Internships Fair useful and take away lots of information to help you decide if a Supported Internship is right for you or your young person.

To help us with planning any future events, we would really like your feedback.

We would love
to hear your
feedback on
the day!



Steph and Ben will ask if you would like to share your thoughts by writing on a post-it-note before you leave. They will be at the main exit and will be happy to speak to you.