



JUBILEE CELEBRATIONS KEEPING SAFE



WARWICKSHIRE
FIRE & RESCUE SERVICE



Warwickshire
County Council





JUBILEE CELEBRATIONS KEEPING SAFE

On the 4th June, beacons will be lit by communities throughout the UK to celebrate the Queen's Platinum Jubilee. Please read the following advice and information to ensure that you stay safe whilst enjoying the celebrations.

ORGANISING A STREET PARTY

An important part of planning a street party is to ensure that emergency services are aware of any road closures. To close roads, residents will need permission from the council traffic/highways departments. Councils will consult with emergency services as part of the process. However, on the day, please remember to leave space for a fire engine or ambulance which may need to come down your street at any time.

CELEBRATIONS AT NON-DOMESTIC PREMISES

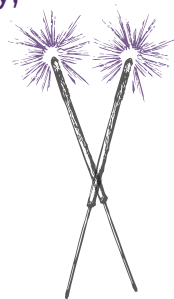
If you plan to have a party, or similar, as part of the Queen's Platinum Jubilee celebrations in a nondomestic premises, you will need to consider the Regulatory Reform (Fire) Order 2005. This legislation places a duty on you to carry out an appropriate fire risk assessment and act upon the findings. Information on this legislation, and about how to conduct a risk assessment, can be found at: www.warwickshire.gov.uk/businessfiresafety or www.communities.gov.uk/fire.

GENERAL SAFETY TIPS FOR YOUR PARTY

FIREWORKS

If you are planning on having a fireworks display, always follow the Firework Code: Only buy fireworks CE marked fireworks.

- 1 Only buy fireworks marked BS 7114.
- 2 Do not drink alcohol if setting off fireworks.
- 3 Keep fireworks in a closed box.
- 4 Follow the instructions on each firework.
- 5 Light them at arm's length, using a taper.
- 6 Stand well back.
- 7 Never go near a firework that has been lit: even if it has not gone off, it could still explode.
- 8 Never put fireworks in your pocket or throw them.
- 9 Always supervise children around fireworks.
- 10 Light sparklers one at a time and wear gloves.
- 11 Never give sparklers to a child under 5 years old.
- 12 Keep pets indoors.
- 13 Do not let off noisy fireworks after 11 pm.

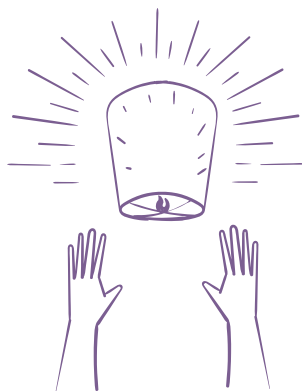
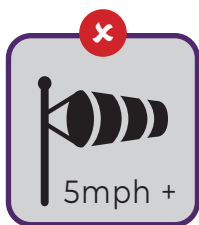
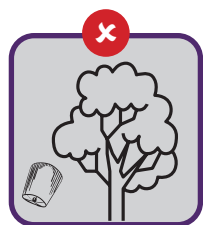


GENERAL SAFETY TIPS FOR YOUR PARTY

SKY (CHINESE) LANTERNS

We do not recommend their use due to the fire hazards and risks they pose to property, crops, livestock and the environment. However, if you do intend to use lanterns, please consider the following safety advice:

- 1 Lanterns should be used by responsible adults only.
- 2 Water should be on-hand in case the lanterns catch fire.
- 3 The launch area should be kept clear of combustible materials.
- 4 Damaged lanterns should not be used.
- 5 Ensure sufficient clearance to avoid obstacles such as trees, power lines or buildings.
- 6 Avoid launching near roads, especially major roads or motorways.
- 7 Avoid standing crops.
- 8 Do not launch within 5 miles of an airport.
- 9 Do not launch in wind speeds in excess of 5 mph.
- 10 Check wind direction before launch



GENERAL SAFETY TIPS FOR YOUR PARTY

BARBECUES

- 1 Keep a bucket of water, sand or a garden hose nearby for emergencies.
- 2 Never use a barbeque indoors or inside a tent - The carbon monoxide that they produce can kill.
- 3 Never leave a lit barbeque unattended.
- 4 Ensure that you site your barbeque well away from fences, sheds, trees, shrubs and garden waste.
- 5 Never use petrol or paraffin to start or revive your barbeque – only use recognised lighters or starter fuel on cold coals.
- 6 If using a gas barbeque, always ensure that you keep gas cylinders out of direct sunlight.
- 7 Do not use the barbeque if you suspect a gas leak.



GENERAL SAFETY TIPS FOR YOUR PARTY

BEACONS

General safety points that you should consider:

- 1 Never use accelerants (such as lighter fluid, petrol, white spirit, methylated spirits and paraffin) to light a bonfire.
- 2 Make sure that you have a well-constructed cordon between the fire and the people (distance will depend on size of bonfire).
- 3 Light the fire using tapers on long poles (at least 2m).
- 4 Ensure that there are no other combustibles near the bonfire so that it cannot spread.
- 5 Have first aid facilities available, including a burns pack.
- 6 Make sure that you have plenty of highly-visible marshals who have received some instruction to help control the crowds.
- 7 Consider wind direction and make sure that the smoke plume will not affect residential areas, roads, and access points.
- 8 With controlled burns, it is illegal to leave a fire unattended or to have too few people to control it.
- 9 Always ensure that a fire is completely out before you leave it and check the next day to ensure that it has not reignited.

DRINKING

If people have been drinking, please ensure that they are not involved in the use of fireworks or BBQs. Encourage people to plan their journey home, and do not be tempted to drink drive.

You will also need to inform us if you are planning to light a beacon. This will help us to avoid sending fire engines to false alarms when they could be responding to a real emergency. Please email us at operationalplanning@warwickshire.gov.uk and provide the following details:

- Name of organiser
- Address of organiser
- Contact number (during the event)
- Location of beacon
- Date that you intend to light the beacon
- Time that you intend to start burning
- Time that you intend to finish burning



JUBILEE CELEBRATIONS KEEPING SAFE



Warwickshire
County Council



WARWICKSHIRE
FIRE & RESCUE SERVICE