



# Energy and Carbon Reduction

Breakout session  
Midlands Energy Hub



North Warwickshire  
Borough Council



# Midlands Energy Hub

- BEIS funded initiative: Local Net Zero Programme
- 5 x Energy Hubs nationally (Net Zero Hubs).
- Support local decarbonisation and clean growth.
- Provide capacity and capability support to LEPs, Local Authorities and local communities to identify and deliver net zero projects.
- 9 x LEP areas with a locally based Senior Energy Project Officer.



# Scope of the session

- Develop a collective ambition in the region for net zero
- Start of a collaboration
- Share ideas and good practice
- Look at short, medium & long term goals
- **Identify actions to be tackled as priority in Energy and Carbon Reduction**



# Energy and Carbon Reduction

What are the top three priorities and challenges?

- 1.
- 2.
- 3.

## WHAT?

Who needs to be involved to mobilise action in the area?

- Xx
- X
- X

## WHO?

What are the key enablers?

- xx
- Xx
- xx

How can we support behaviour change and ensure our actions are equitable?

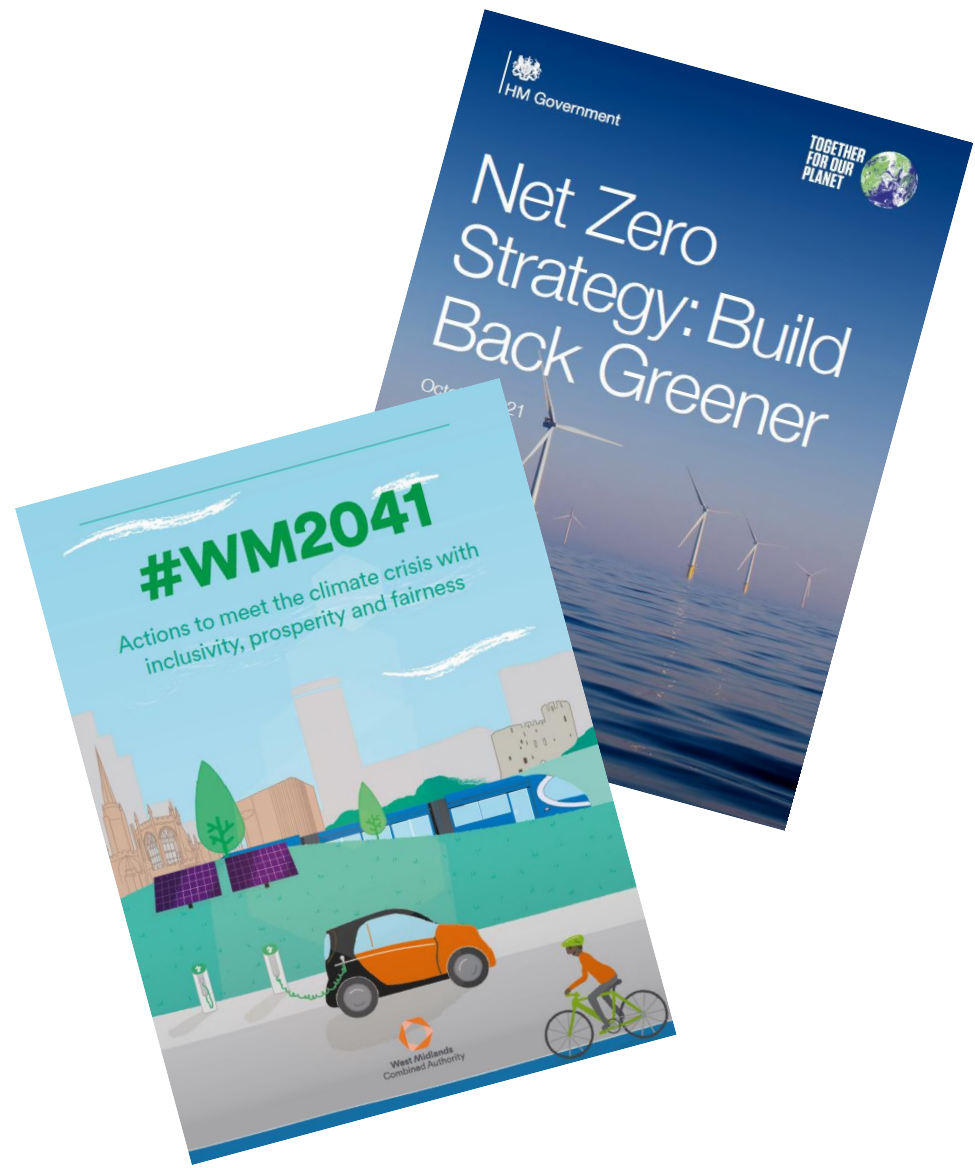
- Xx
- X
- x

## HOW?



# Background

- Net Zero Strategy: Build Back Greener
- WM2041 Climate Change Plan



# The UK's Net Zero Future



Our industrial heartlands are reinvigorated, with innovation and private investment in clean technologies – such as wind, carbon capture and hydrogen in multiple locations across the UK including the North East; or the manufacture of batteries and electric vehicles in the Midlands.



Our journeys are made in zero emission vehicles, with trains, ships and planes running on new low carbon energy sources.



Our towns and cities have cleaner air for everyone, and support walking and cycling with benefits for health.



Our green economy and its supply chains provide sustainable jobs for highly-skilled workers – in construction, manufacturing, engineering, science, nature conservation, finance and more, across the economy and the UK, including in rural areas.



Our goods are designed to last longer and be more efficient, while being used, repaired and remanufactured within a circular economy.



Our businesses are delivering the latest low carbon technologies, services and innovations for the UK and export markets; and are more resilient to the global net zero transition.



Our natural environment is protected, enhanced, and more diverse, with healthy ecosystems and increased biodiversity, supporting a sustainable rural economy and providing wider benefits, including improved mental health and protection from risks like flooding and overheating.

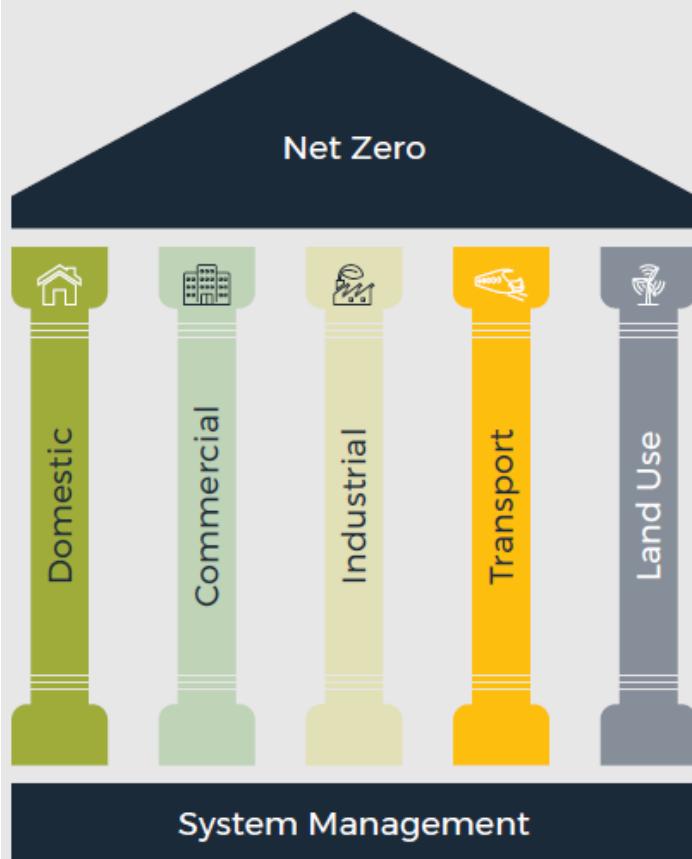


Our homes are warm and comfortable, powered and heated by clean, affordable energy.

*Net Zero Strategy  
2021: Build Back  
Better*



## Sectoral breakdown



These are the 15 main goals and modelling of carbon reduction.

- 1 Domestic energy efficiency retrofit
- 2 Domestic heating retrofit
- 3 Domestic solar PV
- 4 Commercial energy efficiency retrofit
- 5 Commercial heating retrofit
- 6 Commercial solar PV
- 7 Industrial energy efficiency & fuels
- 8 Industrial renewables
- 9 Avoiding travel
- 10 Shifting travel
- 11 Improving passenger service fleets
- 12 Improving freight fleets
- 13 Improving private vehicles
- 14 Land use (Renewables)
- 15 Land use (Natural Capital)

Co-benefits of delivery -

- ▲ Lower energy bills & fuel poverty
- ▲ Reduce inequalities

- ▲ Boosting regional competitiveness
- ▲ Retain energy spend in region
- ▲ New business opportunity & economic growth

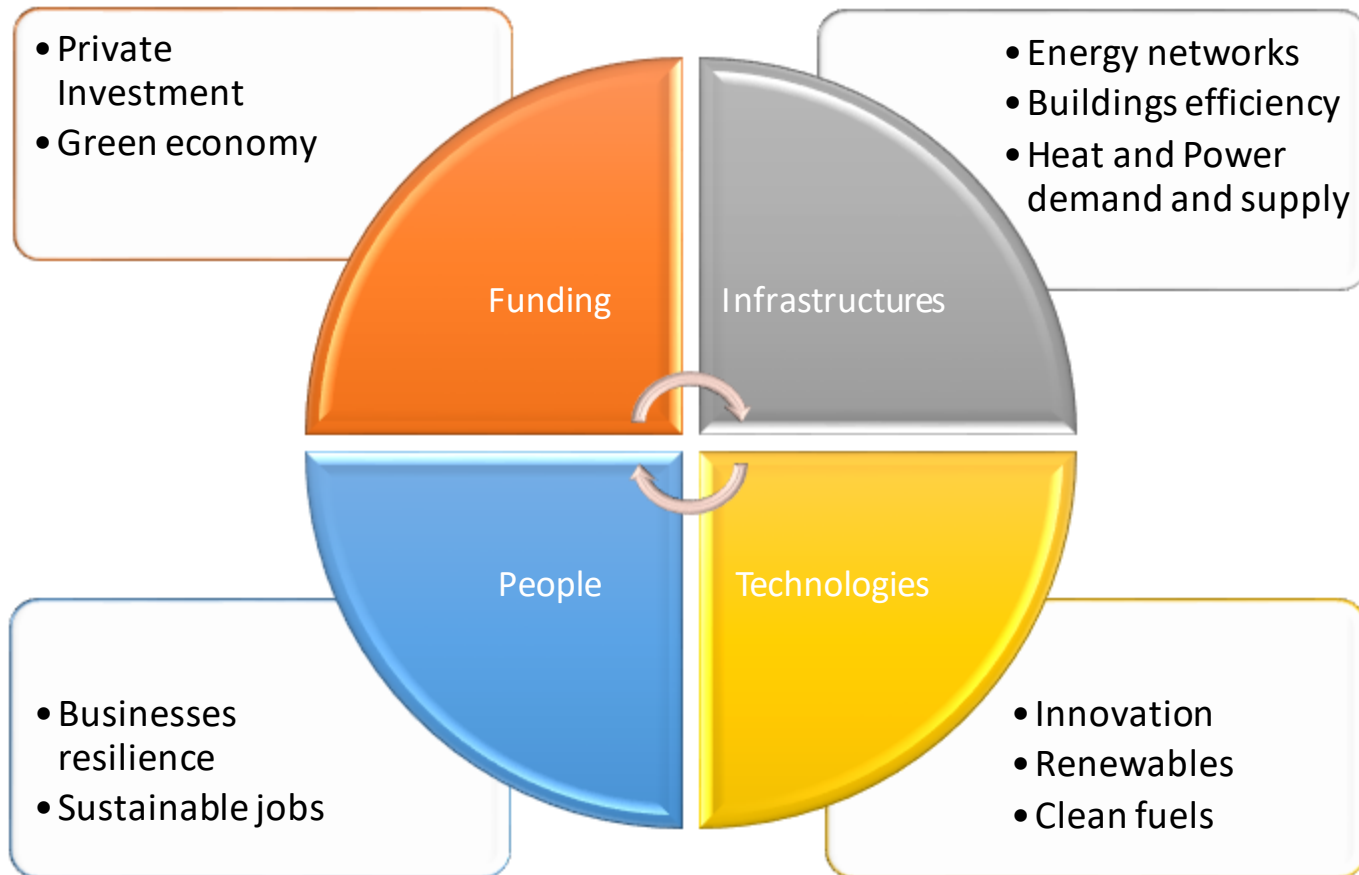
- ▲ Cleaner air
- ▲ Better physical & mental health

- ▲ Adapting to climate change
- ▲ Enhancing biodiversity
- ▲ Better physical & mental health

#WMCA2041



# Key topics for discussion





# Area of focus

- Enable local regeneration
- Supports development of skills
- Creates Jobs
- Improve the quality of life of the local community
- Supports economic growth
- Increase local investment



# Energy and Carbon Reduction

What are the top three priorities and challenges?

- 1.
- 2.
- 3.

Who needs to be involved to mobilise action in the area?

- Xx
- X
- X

What are the key enablers?

- xx
- Xx
- xx

How can we support behaviour change and ensure our actions are equitable?

- Xx
- X
- x



# Energy and Carbon Reduction

## What are the top priorities and challenges?

1. Unlock investment in green economy areas and green technologies
2. Solve Grid constraints issues
3. Secure government funding and gain government support

## Who needs to be involved to mobilise action in the area?

- Regional and Local Government
- Local communities
- Businesses, developers and investors
- Universities and Innovators
- DNOs and energy suppliers

## What are the key enablers?

Leadership support  
Ambitious Policies and Strategies  
Public and private stakeholders collaboration  
Funding and Financing  
Skills and training  
Data

## How can we support behaviour change and ensure our actions are equitable?

Educational campaigns  
Carbon Literacy and training courses  
Local incentives schemes  
Measure and report social value





**Serena Bacuzzi**

RSEPO GBSLEP

Serena.Bacuzzi@nottinghamcity.gov.uk

Tel: 07521266199

**Ayat Ahmed**

RSEPO CWLEP

Ayat.Ahmed@nottinghamcity.gov.uk

Tel: 07864 973053

