

Do you need help to access food and manage your money this winter?

www.warwickshire.gov.uk/facinghardship

Warwickshire Local Welfare Scheme

The Warwickshire Local Welfare Scheme helps the most vulnerable residents at times of unavoidable crisis when they have no other means of help.

The COVID Winter Grant Scheme provides one-off financial support for people in need over the winter months. It can help families with children, other vulnerable households and individuals who have been particularly affected by the pandemic to ensure that they have the support they need to afford food, energy, water bills and associated costs. To enquire or apply call the Local Welfare Scheme.

Visit: www.warwickshire.gov.uk/localwelfarescheme

Call: 0800 408 1448
or 01926 359182



Warwickshire
County Council

Debt and benefits

Citizens Advice provides free, confidential, impartial and independent advice on a range of subjects, including benefits, debt, money management, consumer rights, employment and more.

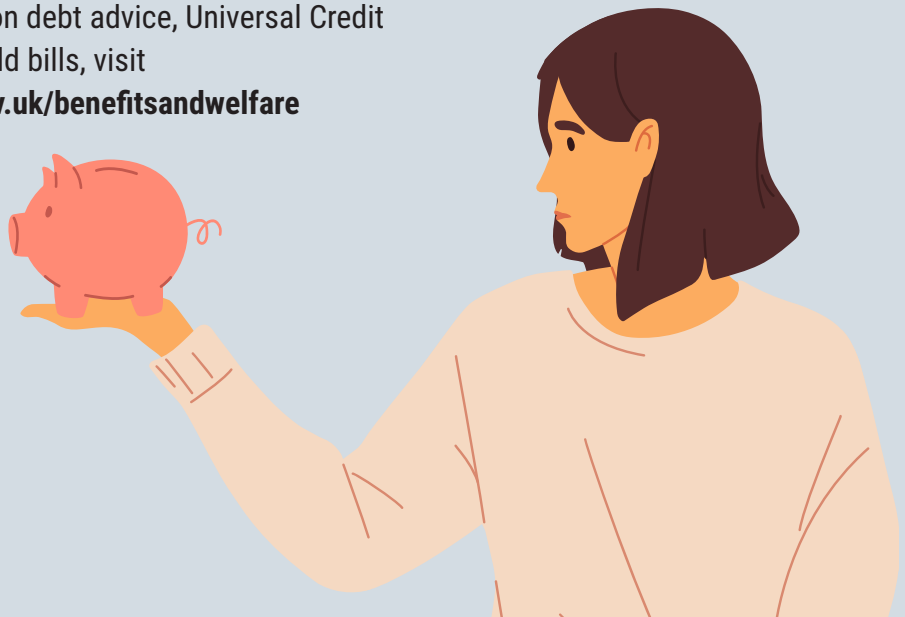
Call **0800 144 8848** or visit the website for your area:

Bedworth, Rugby and Nuneaton: **www.brancab.org.uk**

North Warwickshire: **www.nwcab.org.uk**

South Warwickshire: **www.casouthwarwickshire.org.uk**

For more information on debt advice, Universal Credit and help with household bills, visit **www.warwickshire.gov.uk/benefitsandwelfare**



Housing advice and support

Contact your local district or borough council:

North Warwickshire Borough Council
www.northwarks.gov.uk Tel: **01827 715341**

Nuneaton and Bedworth Borough Council
www.nuneatonandbedworth.gov.uk Tel: **02476 376376**

Rugby Borough Council **www.rugby.gov.uk** Tel: **01788 533533**

Stratford-on-Avon District Council **www.stratford.gov.uk**
Tel: **01789 267575**.

Warwick District Council **www.warwickdc.gov.uk**
Tel: **01926 456111**

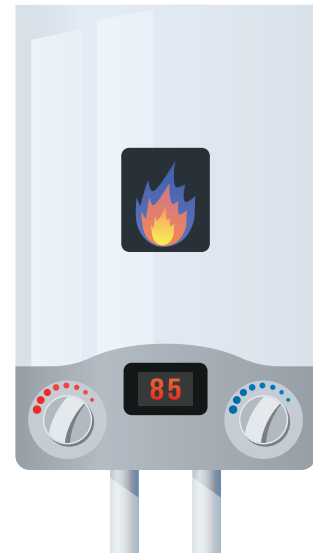


Help with household costs

If you are struggling to pay bills or manage energy debt, call the Act On Energy helpline on 0800 988 2881 or visit www.actonenergy.org.uk for advice.

Other support is available from:

- Affordable Warmth Grants www.affordablewarmthgrants.co.uk
- British Gas Energy Trust www.britishgasenergytrust.org.uk
- Council Tax Benefit www.gov.uk/council-tax-benefit
- Housing benefit www.go.uk/housing-benefit
- Warm Home Discount Scheme
www.gov.uk/warm-home-discount-scheme



Pandemic support in your local area

Find information about local organisations, groups and agencies that provide activities, advice, services and support during the COVID-19 pandemic at www.warwickshire.gov.uk/coronavirusdirectory

Call **01926 410410** for help if you don't know where to turn and are in need of financial or emotional support.

An illustration of a family of three. A man in a dark red sweater and blue trousers is holding a young child in an orange shirt. A woman with blonde hair, wearing a light blue cardigan over a white top and dark trousers, stands next to them, looking towards the man and child. The background is a solid light green color.

Help for families

The Family Information Service is a one-stop shop for Warwickshire families looking for information, advice and one-to-one support on all family matters such as childcare, relationships, health, finance and special educational needs and disabilities.

Go to www.warwickshire.gov.uk/fis or call **01926 742274**

Food supply help and advice

For a range of food solutions for people who may be isolated, vulnerable or in financial crisis visit www.warwickshire.gov.uk/foodsupport

Foodbanks in Warwickshire

Food support if you are in financial difficulty. If you need a food parcel because you're unable to afford food, contact your local food bank. Find details at

www.warwickshire.gov.uk/foodbanks

Free school meals

Low-income families whose children are eligible for free school meals will be offered meals for those children by their schools, during term time.

Apply at www.warwickshire.gov.uk/freeschoolmeals



www.warwickshire.gov.uk/facinghardship