



WES SERVICES FOR 2026/27

**RELIABLE AND AFFORDABLE
PUPIL, OFFICE AND BUILDING
SERVICES FOR SCHOOLS**



CONTENTS

4	How WES Can Help Your School
6	Training To Support Your Workforce Develop Their Skills
<hr/>	
10	Educational Psychology Service
12	Ethnic Minority & Traveller Achievement Service (EMTAS)
14	Specialist Teaching Service (STS)
16	Schools Library Service
18	Warwickshire Heritage Learning Service
20	Integrated Safeguarding Training
22	Warwickshire Music
<hr/>	
24	Communications & Media Service
26	Education Finance Service
28	Governor Services
30	HR & Payroll Service
33	Free School Meals Service
34	ICT Development Service
36	Legal Service
38	School Effectiveness Service
<hr/>	
40	Catering & School Meals Service
42	Health & Safety Service
44	Property Services: Compliance
46	Property Services: Facilities Management
48	Property Services: Maintenance
50	Fleet Maintenance Service

All services are available to both maintained and academy schools unless otherwise specified throughout the brochure.

HOW WES CAN HELP YOUR SCHOOL:

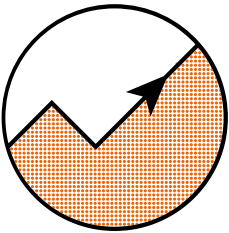
We make it easier for you to run your school.

Our aim is simple – to support schools to achieve their objectives and maximise the value they deliver to pupils, parents and the community.

Our range of specialist services are designed to work in partnership with you to help you to raise attainment, improve operations, develop your staff, develop your resources and ensure legal compliance.



Get results

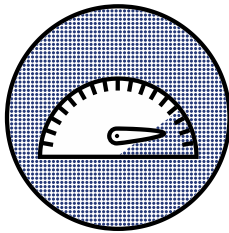


Raising attainment – It's our core business to support schools to raise pupil attainment. WES helps you to help every child fulfil their full potential through our portfolio of educational consultancy and peripatetic education services.

All our pupil services such as the Specialist Teaching Service, Educational Psychology, Schools Library and Heritage Learning offer support across the whole spectrum of needs.

Optimise

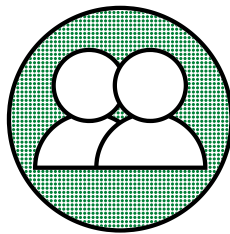
Improving operations – WES helps you to optimise your resources to get the most for your money. Our professional consultancy services help you improve operations and complement the skills you already have. Our office services like Education Finance, HR and ICT Development enable you to get the most from your budgets, staff and ICT.



People power

Staff Development – Helping you to develop staff with strong skills and knowledge who get the best out of pupils is what we do best.

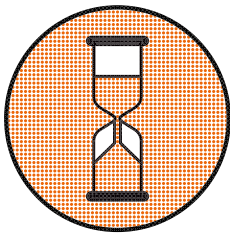
WES provides training and development opportunities for all staff and can help develop and support your school's leadership, management and governance. Our services like Safeguarding, School Effectiveness Support and Governor Services improve the strategic management of your school and all WES services provide training in their areas of specialisms.



Peace of mind

Legal Compliance – We know how complex and wide ranging the legislation surrounding education and schools is. WES gives you peace of mind that you are operating within the law.

Our Legal team provides you with reassurance that a specialist is on hand when you need it.



Save time

Resource Development and Management – Sometimes there are not enough hours in the day to run a school and management of various systems and critical services can demand a lot of attention. WES can help you manage your assets, your hardware and service supplies as well as your day to day operations to save you valuable time. Our services like ICT and Property related services as well as our Catering and Payroll services provide you with peace of mind that your day to day needs are met seamlessly through one provider.

TRAINING TO SUPPORT YOUR WORKFORCE DEVELOP THEIR SKILLS

We provide training and development opportunities to help you develop your staff to have strong skills and knowledge to get the best out of your pupils. We provide training to support your school's leadership, management and governance and our specialist teams provide this in the following areas:

SEND

To help you deliver excellent SEND teaching and a high standard of curriculum for all pupils. Our training will help you to promote and develop a confident and skilled workforce with the necessary skills and knowledge to meet an increasingly diverse range of SEND needs.

- Our [Educational Psychology Service](#) provides a range of training including using Cognitive Behavioural Therapy, Understanding Autism and ADHD.
- Our [Ethnic Minority and Traveller Achievement Service](#) provides a variety of training to support pupils with English as an Additional Language.
- Our [Specialist Teaching Service](#) provides training and capacity building aimed at enhancing skills and understanding of SEND.

School Management

We provide a range of training to support the effective management of your school:

- To support you dealing with the media, our [Communications and Media Service](#) provides media training and coaching for spokespeople.
- To support you managing your finances effectively, our [Education Finance Service](#) provides a range of finance related training.
- To help ensure your governing board has the knowledge, skills and confidence to exercise effective governance in schools, our [Governor Service](#) provides an extensive range of governor training courses.
- Our [HR Advisory Service](#) provides a termly update outlining key employment issues and [Payroll Services](#) offer a range of system related training.
- To help you maximise use of your school's management information system, the [ICT Development Service](#) provides a range of ICT training.
- To support you to meet the requirements of the UK data protection legislation, our [Legal Service](#) provides training to your staff.
- To support strong leadership and ensure every child achieves their full potential, our [School Effectiveness Service](#) provides training in a wide range of school improvement themes.



Health & Safety and Property

To help staff with their health and safety and property related responsibilities we provide a range of training opportunities including:

- Our [Health & Safety Service](#) provides a range of training including Health & Safety Awareness, Fire Safety, Fire Warden, Risk Assessments and Safe Management of Contractors.
- Our [Property Services – Compliance Service](#) provides a range of responsible person training in the areas of Asbestos, Fire and Water Hygiene.
- Our [Property Services – Facilities Management Service](#) provides Caretaker Training Seminars.
- Our [Fire & Rescue Service](#) provides Fire Safety and First Aid Training for school staff.

Catering

To support your catering provision in school, [Educaterers Ltd](#) provides a range of training including Food Safety and Health & Safety and Allergy Awareness.

School Libraries

Our [Schools Library Service](#) provides training support pupil librarians.

Safeguarding

To support your school to fulfil its statutory responsibilities for safeguarding and promoting the welfare of children. Our [Integrated Safeguarding Training](#) provides a range of courses to provide our staff with the awareness and knowledge they need to safeguard children and young people.

Get in touch

To find out more information or book onto any of our courses, contact each service directly using the contact information on their service page or visit the Training Portal on the WES website at apps.warwickshire.gov.uk/wes/training

BOOK YOUR TRAINING THROUGH THE WES TRAINING PORTAL.



Easily searchable by:
name, date, service, or location

Invoices available through your online
my account space on the WES

website.warwickshire.gov.uk/wes

WES EDUCATIONAL PSYCHOLOGY SERVICE

The ethical application of psychology to support children and young people's development and to support school teams.

Tailored Services

Our services are flexible and can be tailored to meet your individual needs – please contact us if you would like to discuss arranging a tailored package for your setting.

WHY USE US

We are Educational Psychologists, Trainee Educational Psychologists, Assistant Psychologists, Undergraduate Psychologists, and Business Support colleagues who are focused on positive life outcomes for Warwickshire's children and young people.

We work with you to overcome individual and systemic barriers to inclusion for young people. This enables participation, promotes effective and inclusive provision, supports access to the curriculum, and supports student and staff wellbeing.

OUR SPECIALISMS

- Work in line with the graduated response, the Warwickshire assess-plan-do-review process.
- A psychological consultation approach, that works with students, school staff, parents and other professionals as necessary.
- Bespoke training to support your school/setting's SEND development planning, covering psychological approaches to understand student needs and appropriate interventions.
- Interventions delivered within settings such as paired reading, sensory screeners and more.
- Capture the voices and wishes of students, to support their engagement, motivation and participation in education.
- Support whole-school planning and development.
- Collaborate with other agencies.

SUBSCRIPTION

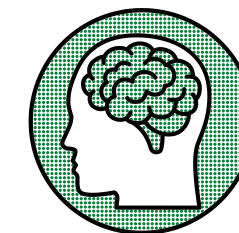
Subscriptions provide a named Educational Psychologist (EP) to support you and your setting. We work with you flexibly to identify targets to address the needs of individual students across your setting such as raising attainment and planning for the specific psychological, educational, social and emotional needs of individuals.

Time is purchased in 3-hour sessions which includes contact and non-contact elements. Your EP will work with staff to maximise the value of your subscription. Support includes application of psychological theory through:

- Consultation with adults to develop collaborative problem-solving.
- Psychological interventions such as Cognitive Behaviour, Narrative, and Motivational Interviewing, Acceptance and Commitment Therapy.
- Individual support for children and young people across the SEND Code of Practice (Depart. for Education, 2015) four areas of needs.
- Direct work with children and young people to identify their strengths and needs.
- Critical incident support - bereavement, sudden death of members of the school community, or local incidents requiring psychological support or guidance.
- A range of relational approaches to support pupil/student wellbeing, including emotion coaching, nurture-informed inclusion, trauma informed and attachment aware approaches.
- Academic interventions (e.g. paired reading, applying the EPATT - Educational Psychology Assessment Through Teaching tool).
- Staff, parent/carer, other professional training, confidence building and skill development.
- Supervision and mentoring of school staff.

BENEFITS

- Support to explore students' psychological, emotional, social, academic, achievement and developmental needs.
- Psychological assessment for evidence-based intervention and planning.
- Support development of staff skills, knowledge, expertise, and confidence through training, coaching and supervision sessions.
- Support system level strategic and operational development.
- Improved confidence in parent and family partnership working.
- Qualified independent professional advice from Educational Psychologists with current knowledge of both national and Warwickshire processes and pathways.
- Close links with social care, health services and other professional groups.
- Increased child and young person engagement, motivation, and participation in education, including capturing pupil/student voice.



Get in touch:

For more details contact your EP on 01926 742911, visit our [website](#) or [email us](#).

WES ETHNIC MINORITY & TRAVELLER ACHIEVEMENT SERVICE (EMTAS)

We provide highly experienced staff to help you meet the needs of pupils with English as an Additional Language (EAL).

95% of schools said the impact of our service was good or excellent.

BENEFITS

Our service:

- Helps build positive family/school relationships through home school liaison.
- Helps you to close the attainment gap and ensure EAL pupils reach their maximum potential.
- Supports language and academic progress of EAL pupils.
- Develops your staff expertise and knowledge base.
- Works across a range of agencies to assess and meet the needs of EAL pupils.

OUR SPECIALISMS

- New to English learners.
- EAL/SEND.
- Advanced EAL.
- Home-school liaison.
- Bilingual services.

WHY USE US

Our multilingual and culturally fluent language development advisers and intervention specialists have extensive experience of working in schools to remove barriers to learning for EAL pupils.



BUY AS YOU NEED SERVICES

Our support for schools is offered on a buy as you need basis:

EAL Support – provides a strategic and responsive approach to meet the needs of EAL learners at all stages of language acquisition.

Helping schools embed best practice in EAL that support s quick integration of overseas new arrivals, ensures effective assessment and promotes inclusive classroom strategies.

The types of activities include:

- Support with EAL assessments.
- EAL SEND assessments.
- Direct and whole school support for EAL and EAL SEND pupils.
- EAL new arrivals assessment training.
- EAL SEND training.
- EAL coordinators network meetings.
- Bespoke training packages (e.g. EAL classroom strategies), advice and guidance.
- EAL in the Early Years training.

Get in touch:

To purchase our buy as you need services or to discuss our services contact us on 01926 476600, or [email us](#)

WES SPECIALIST TEACHING SERVICE (STS)

Build capacity in your school. We offer unmatched depth and breadth of experience that helps meet the needs of your vulnerable pupils and raise standards for pupils with Special Educational Needs and Disability (SEND).

BENEFITS

Our service:

- Supports you to raise standards and improve outcomes for pupils with SEND.
- Has a positive impact on learners' progress against individual education plans.
- Helps to build capacity and remove barriers to learning.

BUY AS YOU NEED SERVICES

Our services are flexible and can be tailored to meet your individual needs. Our buy as you need services include:

- Training and capacity building aimed at enhancing skills and understanding of SEND.
- Access arrangements.
- Coaching and mentoring.
- Bespoke packages for individual pupils.

OUR SPECIALISMS

- Strategic SENDCo support.
- SEND capacity building.
- SEND professional development.
- Cognition and learning.
- Autism.
- Selective Mutism.
- Social Communication and Interaction.
- Speech, Language and Communication including Developmental Language Disorder.
- Social, Emotional and Mental Health.

WHY USE US

Our excellent knowledge of Warwickshire's systems and processes enable us to meet your needs through one point of contact. The service can be tailored to meet the individual needs of pupils in your school and contribute to whole school improvement.



Your staff are hardworking, caring, professional and do a wonderful job. Couldn't ask for more commitment from them.

SUBSCRIPTIONS

Specialist Teaching Service – a strategic and responsive approach to meet the needs of children, particularly those with additional needs. We support your educational vision, and put effective systems in place to ensure targeted support has the impact you demand. In agreement with you, work is delivered on site, virtually or off site. Your subscription also provides you with access to training and other events as well as a discount on additional hours and training.

We can help you:

- Keep up-to-date with changes in national policies and legislation.
- Deliver effective provision in line with the SEND inclusion guidance.
- Build SEND provision capacity in your school.
- Deliver evidence based interventions.
- Assess and screen pupils.
- Prepare a pre-Ofsted health check.
- By contributing to Education, Health and Care Plans and monitoring provision.
- With the implementation of programmes for individual pupils or groups of pupils.
- Train your Teaching Assistants to run groups.
- Monitor and provide general care, safety and welfare for pupils.
- By providing coaching and mentoring support for staff around working with children with SEND.
- With the Assess Plan, Do, Review cycle.
- With the Early Help process.
- With parent / carer workshops.



Get in touch:

To purchase buy as you need services or to discuss our services, please call us on one of the below numbers:

Northern area
01926 413777

Centre/south area
01926 476600

Eastern area
01926 413777

WES SCHOOLS LIBRARY SERVICE

We bring expertise, advice and resources to support reading strategies and curriculum teaching in schools, in line with Government and Ofsted objectives.



Let us help you encourage a lifelong love of reading and learning.



BENEFITS

- Our staff ensure books are up to date, relevant and of the highest quality.
- Borrowing books can work out cheaper than buying.
- Our services are wide ranging and diverse in their appeal to students at every key stage supporting well-being and awareness of the individual and the world around them.

OUR SPECIALISMS

- Advice and support with your school library, including stock audits and book recommendations.
- Cost effective selection of resources.
- Advice on library management systems.
- School staff CPD, network meetings and pupil librarian training.
- Book awards and other reading initiatives for students.

BUY AS YOU NEED SERVICES

We offer a range of library services on a buy as you need basis, please contact us to discuss your requirements.

SUBSCRIPTIONS

NEW – SEND Resources Collections For All Schools – these collections are designed to encourage a love of stories and learning for children with additional needs. The collections include a range of specialist books and artefacts that are handpicked based on individual school requirements. These can be accessed by all schools and are delivered termly.

Primary Reading for Pleasure Subscription – comprises an annual loan of 100 fiction books to support wider reading within your school, participation in the Year 4 Reading Celebration in the spring term. It also includes participation in the Warwickshire Junior Book Award for Y5/6 including a set of shortlisted books and a 40 minute book talk session.

Secondary Reading for Pleasure Subscription – includes participation in the Warwickshire Secondary Book Award and the Warwickshire Teen Book Award plus one set of jacketed shortlisted titles, alongside one set of Yoto Carnegie shortlisted titles. Also included are two 40-minute book talks in school facilitated by SLS staff.

The following **Subscriptions** offer termly learning resource boxes and annual loans of books to support reading for pleasure in your school. Relevant artifacts are added free of charge where possible. Delivery to and collection from your school is included and all subscribers benefit from a one hour advisory visit, telephone advice and assistance, and discounts on book awards and book purchases.

WHY USE US

We provide teachers and schools with the high-quality resources, ideas and advice needed to spark in students a lifelong love of reading and learning.



PRIMARY AND SPECIAL SCHOOLS:

Subscription	Annual Provision
Pods	7 learning resource boxes and 150 reading for pleasure books
Seeds	9 learning resource boxes and 150 reading for pleasure books
Young Shoots	21 learning resource boxes and 350 reading for pleasure books
Saplings	27 learning resource boxes and 450 reading for pleasure books
Trees	42 learning resource boxes and 600 reading for pleasure books

SECONDARY SCHOOLS:

Subscription	Annual Provision
Beech	10 learning resource boxes and 650 reading for pleasure books
Oak	12 learning resource boxes and 800 reading for pleasure books

We are a flexible service and can offer bespoke packages if our standard subscriptions don't suit you. Please contact us to discuss your bespoke requirements.

Get in touch:
Contact us on 01926 413461, or [email us](#) to discuss your requirements.

WARWICKSHIRE HERITAGE LEARNING SERVICE

We bring the past to life through creative and immersive workshops that will inspire your students.

BUY AS YOU NEED SERVICES

Warwickshire Heritage Learning is offered on a buy as you need basis. Highlights include:

Exploration – workshops available to support a range of curriculum topics at St John's House Museum, County Record Office and Market Hall museum, Warwick.

Narrative immersion – our narrative immersion workshops inspire curiosity, encourage the creative learner, foster enquiry led learning, create a love and appreciation for heritage, enable critical thinking and support decision making. We provide you with:

- Support throughout the booking process.
- Opportunity to adapt your visit around the needs of your class.
- Lunchroom facilities.
- Pre-visit information and risk assessments provided.

Get in touch:

for more information or to purchase our services, call Warwickshire Heritage Learning on 01926 412069, visit heritage.warwickshire.gov.uk/heritagelearning or [email us](#).

Bring us into your classroom – let us visit you in the class room with Ancient Egyptian artefacts or a whole day exploring the Stone Age. Other workshops are available.

Immersive experiences – step back in time at St John's House Museum and discover life as a Victorian child. Look out for our seasonal workshops in the summer and at Christmas.

NEW SEND provision – provision of sensory resources for children with SEND to engage with our heritage learning experiences within their class. Or take the option of a sensory trail of our building and garden using new resource packs.

NEW - Key Stage 3 history curriculum consultation – we can support you to integrate local history into your existing KS3 History curriculum. Our team will collaborate with your history department to identify local history links and primary sources linked to your curriculum. Included in the consultation are up to 20 images for use in the classroom.



BENEFITS

- Our workshops link directly to the national curriculum and local history.
- Your pupils will have access to the cultural capital of original artefacts and documents.
- Workshops delivered by experienced teaching staff.
- St John's House Museum holds the Learning Outside the Classroom Badge.

SUBSCRIPTIONS

Loan Box Subscription Service

Become an extension of Warwickshire museum and inspire your children with unique learning resources. Our loan box subscription service includes all you need to increase access to object based and cultural capital rich learning.

Our loan boxes contain objects from Warwickshire museum normally reserved for display in the museum, offering children the opportunity to become curators and care for Warwickshire's history in their school.

Each loan box is supported with exclusive films with Warwickshire Museum curators. These short films focus on the objects in each box, explaining their historical significance.

PRIMARY HISTORY TEACHER NETWORK - CPD OPPORTUNITY

Are you looking for help and inspiration to deliver the Primary History Curriculum?

Designed by teachers, for teachers, the network supports History Subject Leaders and Teachers in the teaching and learning of History within our Primary Schools. The network provides opportunities to meet fellow practitioners, subject specialists and educational consultants. Our aim is to share ideas, enhance curriculum design and inspire a lifelong appreciation of our heritage and history through practical and engaging activities, and access to inspiring resources.

Based at St Johns Museum, Warwick, in newly developed Learning Spaces, come and join us for this hands-on opportunity to reinvigorate the History experiences within your school. See our website for further details and dates.

WE INTEGRATED SAFEGUARDING TRAINING

Support for your school to fulfil its statutory responsibilities for safeguarding and promoting the welfare of children.

BENEFITS

- Our training courses provide your staff with the awareness and knowledge they need to safeguard children and young people in Warwickshire.
- Our training forms part of the wider safeguarding advice, guidance and support service.
- Your designated safeguarding leads will get the information needed to develop their expertise and be connected into locality support, networks or avenues of free training and support.
- Stay informed about safeguarding changes in Warwickshire as part of Families First for Children (Pathfinder).

BUY AS YOU NEED SERVICES

We offer a range of courses for individual staff, governors or whole staff groups. Available courses include:

- **Newly Qualified Initial Designated Safeguarding Lead (DSL) Training**
- **DSL update training** – once you have attended the Initial DSL training, an update is required every two years.
- **Prevent Training for DSLs** – to assist DSLs understand practical issues surrounding the Prevent Duty, and Prevent Risk Assessment.
- **Brook Harmful Sexual Behaviours (HSB) Traffic Light Tool** – support and training to give staff the confidence to manage PSB and HSB in education settings.
- **Early Support, Family Help Understanding your Role** – guidance on your role as lead practitioner.
- **Domestic Abuse Training** – develop a basic understanding of domestic abuse and the impact on children. Develop confidence in communicating, risk assessing and sign posting families.
- **Understanding Today's Children** – to ensure delegates understand the origins of behaviour and how this can present. Explores the overlap between ASD, ADHD, Trauma and Attachment and how all children can be supported.
- **Reducing Parental Conflict** – understand the impact of parental conflict on children.
- **Solihull Approach 2-day foundation course** – aims to increase knowledge and understanding of emotional health and well-being for practitioners.
- **Restorative & Relational Practice / Introduction and Practice Skills** – supporting you to start to embed relational values and principles. Helping you to facilitate restorative conversations and managing the challenges they bring.
- **Safer Recruitment (Employment) Training** – provides information and understanding to recruit safely and comply with relevant statutory guidance.
- **School Safeguarding Audit** – review school's documents and practice to check compliance.
- **DSL training for Early Years and Childminders** – safeguarding training specifically for early years providers.
- **Multi-Agency Child Sexual Abuse** – how to respond to concerns and identifying signs and indicators of sexual abuse.



Fantastic knowledge by course tutors. All my questions were answered fully.



Get in touch:

For more information or how to book onto our training courses please visit: safeguarding.warwickshire.co.uk contact us on 01926 743000, or [email us](mailto:info@warwickshire.gov.uk).

WES WARWICKSHIRE MUSIC

We support high quality music education and work with over 10,000 young people every week.

BENEFITS

Our Service:

- Provides professional teachers with full safeguarding and child protection training to support schools in the delivery of the Music National Curriculum and requirements of the National Plan for Music Education

BUY AS YOU NEED SERVICES

Warwickshire Music is offered on a buy as you need basis. Services include:

- Whole class 'first access' instrumental programmes.
- Group and individual instrumental/ vocal teaching across all key stages.
- Music Curriculum lesson delivery.
- Music group and ensemble direction.
- Music therapy.
- SEN music provision at all levels.
- Vocal Programmes.
- FREE instrumental loan in first year of tuition.
- Training and CPD opportunities for teachers.
- Advice and support in relation to any aspect of music provision.



*Rugby Free
Secondary school
is delighted to be
working closely
with our colleagues
from Warwickshire
Music*

*Warwickshire
Head Teacher*



Get in touch:

For more information or to buy our services call 01926 742630, visit warwickshiremusic.org or [email us](#).

NEED SOMETHING UNIQUE?

CALL US TO DISCUSS A SERVICE TAILORED TO YOUR SCHOOL.

As well as our subscriptions, we offer completely tailored services for individual schools.

Contact us to find out how WES services can be tailored to your specific needs.

Call 01926 412210 or email wesgeneral@warwickshire.gov.uk for more information.

WES COMMUNICATIONS & MEDIA SERVICE

500
*media enquiries relating to
school matters each year.*

Expert advice and support delivered with unrivalled value for money.

BENEFITS

- Build and maintain a strong community reputation.
- Maximise media relationships.
- Handle communications and the media in times of crisis and bad news.

WHY USE US

- To raise your profile and maximise promotional opportunities.
- To celebrate success.
- To get advice and support on making the best use of all available media.
- To build and maintain your schools reputation.

OUR SPECIALISMS

- Media management.
- Graphic design.
- Print and production.
- Video production.
- Stakeholder engagement.
- Copywriting.
- Internal communications.
- Promotional campaigns.
- Photography.
- Event management.

SUBSCRIPTIONS

Reputation management/ bad news support – for advice, written statements and strategies to deal with the demands from communities, and the media in times of crisis. We provide media training and coaching for spokespeople, and a physical presence on site to help you manage any media that may arrive.

Get in touch:

To purchase buy as you need services, or to discuss our services, call us on 01926 414162 or [email us](#).

BUY AS YOU NEED

Please contact us if you would like to discuss a tailored package for your school. Services include:

- Video production.
- Media management.
- Graphic design.
- Print and production.
- Copywriting.
- Promotional campaigns.
- Photography.
- Event management.

We have three buy as you need packages for schools:

Celebrate – support for a good news story and includes creation of a news release, half a day of photography, circulation of the news release to the media and management of follow up media enquiries.

Promote – one piece of design work for promotions such as a prospectus, advertising campaign, website or signage.

Produce – one piece of multi-media production for example filming a promotional video or photography.

WES EDUCATION FINANCE SERVICE

We make it easier for you to deliver the best value from limited financial resources and build positive outcomes for learners.



Super service, personal and helpful to the needs of our school.

Warwickshire Headteacher

BENEFITS

Our service:

- Helps you to meet the strategic objectives identified in your School Development Plan through setting and monitoring budget priorities.
- Makes the process of managing school finances quicker and more efficient.
- Offers technical system support on a range of finance packages.
- Helps you to manage and mitigate the risk of financial deficit

Get in touch:

To purchase buy as you need services or to discuss our services, call us on 01926 412730 or [email us](#).

OUR SPECIALISMS

- Strategic financial planning.
- Budget monitoring.
- Technical system support.
- Compliance with financial regulations.
- Training and development.
- Financial consultancy.

BUY AS YOU NEED SERVICES

Contact us direct to discuss a tailored package for your school. Our buy as you need services include:

- Financial dashboard.
- Automated pay check facility.
- Training in a variety of areas.
- Additional meetings and attendance at governors meetings.
- Recruitment and selection support.
- Short term cover for finance vacancies in school.

SUBSCRIPTIONS

We offer a range of subscriptions to enable you to choose the level of support your school needs.

The Financial Management Support Service offers four levels of cover each providing you with a named finance officer, a strategic multi-year financial plan, financial support through meetings and our helpline, use of our Budget Planning Software and financial system support. Choose from:

- **Standard Service** – including one three hour meeting and a written report to Governors each term.
- **Enhanced Service** – two three hour meetings and one report to Governors each term. You can choose an additional service per term from the list on the WES website.

- **Enhanced Plus Service** – providing financial support for two linked schools/settings which includes two strategic meetings per term.
- **Bursar Service** – tailored to meet your individual needs through ten monthly three hour meetings per year.

For schools using financial systems who require a more light-touch level of support, **Finance System Support** is available providing you with access to a helpline for system and technical queries in relation to financial systems. System upgrades and guidance on new functionality is also included. A termly visit can be added to this option. For academies we will also support you to make VAT returns and produce bespoke reports.

BENEFITS

Effective financial management in schools is essential as budgets tighten and costs rise.

We support you to optimise resources effectively and make sound financial decisions. Our wide range of services

mean we can support you at the highest level through the provision of a Business Manager right through to supporting and empowering your own business managers and finance staff to carry out tasks.

WES GOVERNOR SERVICES

We help ensure your Governing Board has the knowledge, skills and confidence to exercise effective governance of your school.

“Everything a governor or trustee needs, in one place.”

BENEFITS

Our service:

- Provides practical solutions, not just theory.
- Gives access to a fully supported Clerking Service.
- Enhances governor skills through our extensive training programme.
- Offers support and advice to Governors, Governance Professionals and Headteachers.

OUR SPECIALISMS

- All team members have an active role on a Governing Board as a Governor, Chair or Governance Professional.
- A knowledgeable team who provides year-round advice and guidance on all matters relating to the role of Governing Boards.
- We offer a wide variety of training and development opportunities through a well-respected and successful programme of courses.
- We offer in-school training sessions and consultancy as well as access to high quality online training.
- We offer a Professional Clerking Service, which includes recruiting, training and appointing a Governance Professional to support your Governing Board.

SUBSCRIPTIONS

Governor Development Subscription – includes:

- Dedicated colleagues that provide support and advice via email, phone calls and in person.
- Unlimited access by Governors and Governance professionals / Clerks to the training outlined in the Governor Services Training and Development Programme.
- Access to online briefings.
- An informative monthly newsletter.
- Access to a document resource library.
- Access to one in-house training session on a topic of your choice on a date and time to suit.

Multi-School Subscription – as schools work together in clusters or consortiums this subscription enables them to develop their working relationships and benefit from joint training and development opportunities together with the benefits of the Governor Development Subscription.

Clerking Service – we will recruit and train a Governance Professional and assign them to your Governing Board to enable them to provide professional administration and advisory support to all members of the Board.

GovernorHub and GovernorHub Knowledge Subscription – used by 8,000 schools and 100,000 users around the country, GovernorHub is an online service designed to help Governing Boards run efficiently. GovernorHub helps Governors, Trustees and Governance Professionals to communicate and store documents, membership details and other information in one secure and accessible place. Governor Hub Knowledge offers training and access to a knowledge bank that provides support when governors need it - giving Governing Boards confidence in their actions and the knowledge to be truly effective. **Change for 2025** - GovernorHub and GovernorHub Knowledge is now combined into one single discounted subscription.

WHY USE US

Good Governance leads to Good schools. Our Service supports Governing Boards and Headteachers to fulfil their roles and responsibilities in leading and managing their school efficiently, effectively and in accordance with law.

BUY AS YOU NEED SERVICES

In addition to the subscriptions we offer, you are welcome to contact us to discuss a tailor-made package for your school.

We offer a range of Buy As You Need Services which include:

- In house bespoke training sessions.
- Additional Clerking support for Governing Board meetings.
- A comprehensive External Review of Governance.
- Headteacher recruitment and selection support.
- Headteacher Induction Programme
- Facilitated Governing Board Reviews / Self Evaluation.
- School website audit.
- Support for Panel Hearing and Members (e.g., Complaints, Grievance & Exclusions).
- Mediation Support.
- Support to resolve Complex Complaints & Governance Matters.

Get in touch:

To purchase our buy as you need services or to discuss our services please call us on 01926 745137, or [email us](mailto:info@wes.gov.uk).



90%

of Warwickshire governing boards attended our training last year.

WES HR & PAYROLL SERVICE

Access all your HR and Payroll support through a single, dedicated number making help fast and hassle-free.



BENEFITS

Proactive People Management: Expert guidance to address underperformance, conduct and absence, ensuring your school delivers the best outcomes for pupils.

Rapid Response to Change: Strong partnerships with national agencies mean you're always ahead of legislative updates and compliance requirements.

Recruitment Excellence: Proven strategies and support to help you attract and secure the best candidates for your school.

Payroll Accuracy You Can Rely On: Confidence that your staff will always be paid correctly and on time, every time.

WHY USE US

Our integrated approach, sector-specific expertise, and commitment to proactive, personal support will help your school thrive in a changing educational landscape.

OUR SPECIALISMS

Expert Payroll Management: Seamless payroll processing and up-to-date legislative compliance, so your staff are always paid accurately and on time.

Specialist HR Guidance: Tailored advice for teachers and support staff, delivered by professionals who understand the unique challenges of the education sector.

Targeted School Recruitment: Proven strategies to attract and retain top talent, ensuring your school is staffed by the best.

Efficient Disclosure and Barring Service (DBS): Fast, reliable DBS checks using the latest e-bulk technology, with expert guidance on eligibility and compliance.

Customised Training and Briefings: Training sessions and briefings designed around your school's needs, keeping your team informed and confident.

Legislative and Statutory Expertise: Ongoing updates and advice on the latest statutory requirements, so you stay ahead of regulatory changes.

SUBSCRIPTIONS

- 24/7 self-service support via our online portal (Hornbill).
- Continuous access to warwickshire.gov.uk/wes, providing model letters, policies, and online training resources including guides for Your HR.
- Monthly communications with updates on HR legislation, payroll, and other relevant topics.

Payroll Service

We manage payroll from gross to net, handle third-party payments, and ensure timely statutory returns. Our team oversees HMRC compliance, RTI reporting, and pension auto-enrolment. Key features:

- Employee self-service for payslips, P60s, employment details, and bank updates.
- A dedicated Payroll Officer as your main contact.
- Scheduled payroll and system training, including webinars and in-person HR sessions.
- Built-in, up-to-date legislative compliance
- In person Your HR Training at an additional cost

HR Essentials Service

We provide comprehensive support for all workforce relations matters within your school, enabling effective people management through high-quality, outcome-focused HR advice. Key features:

- Access to professional, school-focused HR guidance.
- Virtual or onsite support for meetings and hearings.
- A dedicated HR Adviser as your main contact.
- Termly online briefings on legislative and policy updates

Employee Assistance Programme

Designed to support the wellbeing of school staff and their families, offering confidential help for personal and work-related matters. Key features:

- 24/7 access to a dedicated helpline and website.
- Counselling sessions tailored to individual needs.
- Additional referrals available if recommended (extra fee applies)

Get in touch:

For service enquiries, please contact the appropriate delivery team by submitting a request via the customer portal (Hornbill) or call 01926 418614 during office hours.

WES HR & PAYROLL SERVICE (CONTINUED)

Access all your HR and Payroll support through a single, dedicated number making help fast and hassle-free.

BUY-AS-YOU-NEED SERVICES

Recruitment Services

We help schools recruit and retain high-quality staff, ensuring the right people are in the right roles. Choose from four packages:

- Standard job posting: to include your advert and any attachments or links.
- Standard Plus: Option 1 plus telephone/email support from our resourcing professionals.
- Enhanced: Option 2 plus social media sharing and your organisation's branding.
- Premium Managed: Option 3 plus a planning meeting and support for assessment events.

Disclosure and Barring Service (DBS)

As a registered body, Warwickshire County Council uses the e-bulk system for DBS applications. Our counter-signatories confirm eligibility for your requested checks.

Key features:

- Virtual and in-person Pre-Employment and DBS Training to build confidence in processing applications and identifying required checks, in line with DFE guidance.
- Discounted training rates for Payroll and/or HR Essentials subscribers.



Get in touch:

For service enquiries, please contact the appropriate delivery team by submitting a request via the customer portal (Hornbill) or call 01926 418614 during office hours.

WES FREE SCHOOL MEALS SERVICE

A complete solution for all aspects of the Free School Meals application process.

BENEFITS

- Save time – you won't need to manually check eligibility for free school meals.
- Promote healthy eating at school.

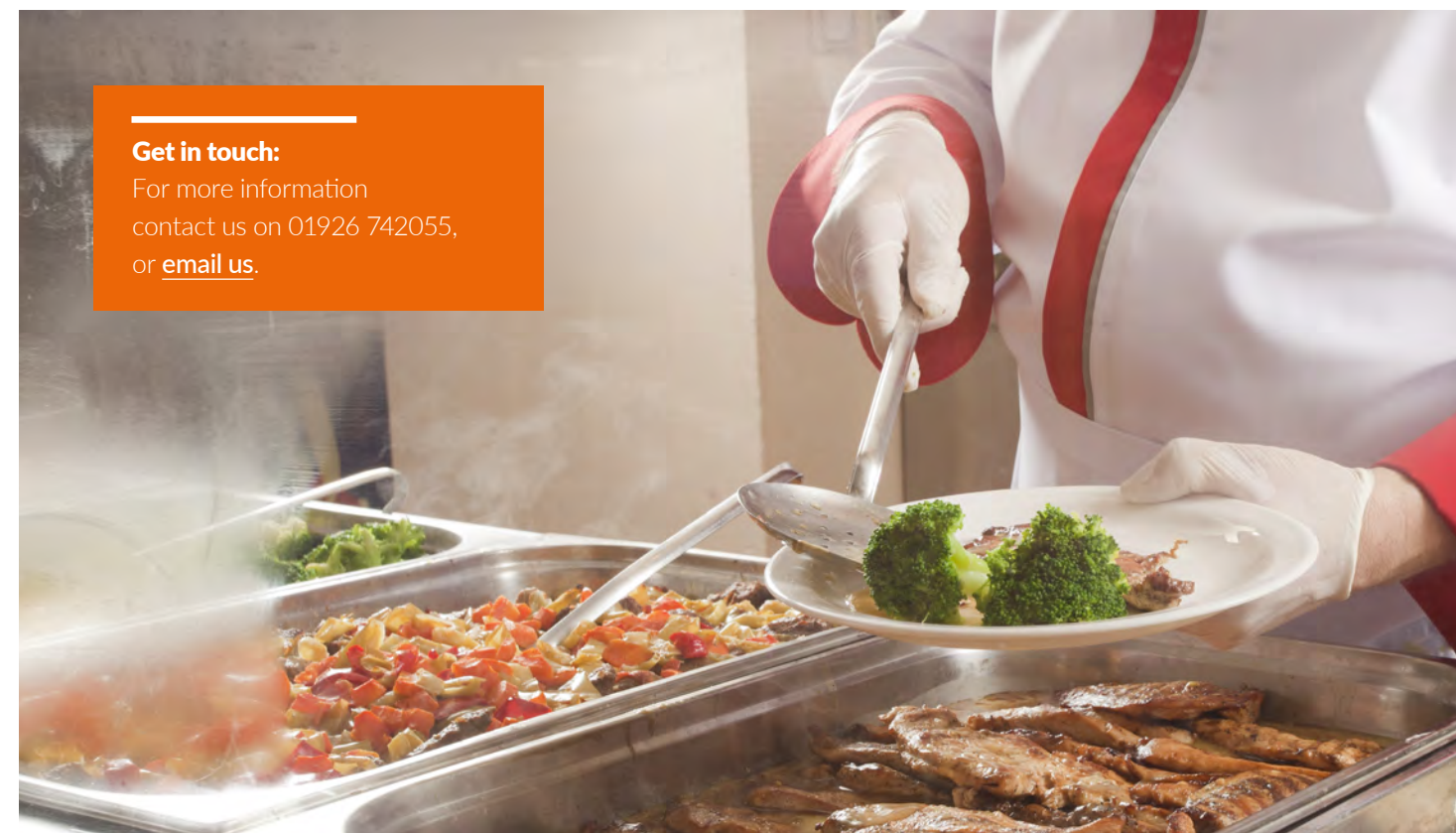
SUBSCRIPTIONS

An alternative solution for the assessment and processing of applications for free school meals.* Parents can apply online, in person or via telephone – ensuring a wide range of access to suit all needs. Our online system enables telephone and online applications to be checked against live data held by the DfE immediately. Schools have direct access to our system and can easily see which students are eligible for free school meals.

SERVICE FOR ACADEMIES ONLY

Get in touch:

For more information contact us on 01926 742055, or [email us](#).



*Academies are notified on the same or next working day of a successful application.

WES ICT DEVELOPMENT SERVICE

Our service supports you to make secure, innovative use of technology to improve outcomes. We work with you to keep your school safe and connected so that you are able to focus on education.



We have a dedicated Service Desk for all your ICT issues and requests.

BENEFITS

Get in touch:

To access our buy as you need services, or to discuss our services, call our Service Desk on 01926 414100, or [email us](#).

Our service:

- Ensures critical IT systems function at optimum levels.
- Supports you to keep children safe online.
- Provides fully tested equipment, software and systems that are focussed on education and learning.
- Interprets new legislation and develops solutions to save you time.
- Provides a one stop shop to meet all your ICT needs.

OUR SPECIALISMS

- Strategic ICT planning.
- ICT systems and technical management.
- Procurement.
- Online safety and digital safeguarding.
- MIS support, development and training.

WHY USE US

We understand the complexities of using and managing ICT within a school environment and support you to implement cost effective solutions that will raise standards in teaching, learning and school management.

BUY AS YOU NEED SERVICES

Our services can be tailored to meet your individual needs. Contact us if you would like to arrange a tailored package for your school.

We also offer buy as you need services including procurement of desktop PCs, laptops, Apple devices, Chromebooks, audio visual equipment, wireless services and additional technical and management information support.

SUBSCRIPTIONS

Management Information, Development, Advice and Support (MIDAS) Service for SIMS / Bromcom / Arbor – provides support and training to maximise your use of SIMS, Bromcom or Arbor data to support teaching, learning and safeguarding. A premium version of this service enhances the support you receive with either a half-termly, or termly three hour visit to cover your priority MIS support tasks.

Broadband Service – provides secure and protected connectivity to the internet through a resilient pair of next-generation firewalls and high capacity JaNET links providing secure and fast connectivity to services such as Office 365, Google Apps and Microsoft.

Web Filtering – provides maintenance and support for internet filtering. UK Safer Internet Centre accredited filtering and alerting is applied to each site to provide a high degree of security and detection of potential safeguarding concerns identified through school internet usage.

Digital Safeguarding Service – provides real time internet and desktop monitoring of Windows, MAC, iPads and Chromebook devices for legislative compliance and is focussed on meeting the requirements of the Keeping Children Safe in Education and PREVENT agendas.

Welearn365 – the unique Warwickshire bundle that brings together a range of applications into a collaborative learning platform. It also includes the automatic set up and maintenance of email accounts from SIMS and for all schools it also includes Purple Mash.

J2E Resources – provides a variety of tools to support learning in the classroom.

Wireless Support - provides technical support for your wireless solution covering both labour and hardware costs. Any managed wireless solution provided by ICT and under hardware warranty is covered.

Microsoft Enterprise Agreement – provides access to the Microsoft suite of programmes.

VOIP - provides IP telephony to schools, which will be required after the disconnection of all analogue phone lines by BT in January 2027.

Technical Support for Servers – provides support for servers under warranty. For primary schools, support for PCs and laptops supplied by our service is also covered.

Server Backup and Restore – provision maintenance and support of a customised back up and restore solution.

Technician Visits – three hour visits at a frequency to suit you.

WES LEGAL SERVICE

On-demand legal support.

95% CUSTOMER SATISFACTION

FOR MORE INFORMATION
ON OUR SERVICES VISIT:
MARWICKSHIRE.GOV.UK/WES

BENEFITS



Need some help?

Call our hotline on
01926 412361.

- Remove the stress of complex legal cases.
- Immediate advice and guidance via our Legal Hotline.
- Steeply discounted hourly rate for pre-paid time and special subscriber rates for further advice required.
- A dedicated team with a large department of specialists to support more complex needs.
- Fast response for peace of mind in emergencies.

WHY USE US

We have helped relieve stress, and delivered robust legal advice to the education and commercial sectors for over 25 years.

Routine or complex: our customers know they can call us for specialist advice and support to meet the legal challenges of the education sector.

OUR SPECIALISMS

- Dedicated education team
- Pupil-related matters – special educational needs, admissions and exclusions.
- Child protection and safeguarding.
- Property related matters – landlord, tenant, and conveyancing matters.
- Disputes with parents.
- Commercial contracts, licence agreements, and procurement.
- Anti-social behaviour, social media.
- Pensions and related matters.
- Employment matters.
- UKGDPR, data protection and freedom of information.



SUBSCRIPTIONS

Legal Service – provides up to ten hours of legal advice over the year.

Your subscription provides you with a single point of contact through a telephone hotline, Monday to Friday.

The hotline can respond to straightforward matters without delay and refer complex / specialised matters to colleagues with relevant expertise.

No surprises.

Reached your allocation of hours? No problem. Extra support is available on a buy as you need basis at subscriber rates and we always provide a quotation.

Data Protection Officer Service – this comprehensive service helps you meet the requirements of the UK General Data Protection Regulation (UKGDPR). Working in partnership with your senior leadership team and staff who manage data, this service delivers all the work of a Data Protection Officer (DPO), it:

- Provides a named officer, with support from our specialist DPO service team and legal advisors.
- Monitors compliance with the UKGDPR and other data protection law, including support for managing internal data protection activities, advising on data protection impact assessments, training staff and conducting internal audits.
- Acts as the first point of contact for supervisory authorities and for individuals whose data is processed.
- eLearning for your staff.
- Annual compliance check which will result in recommendations and overall feedback.

BUY AS YOU NEED SERVICES

You can purchase legal support at an hourly rate which can be found on the WES website.

We also offer:

- Independent review panels.
- Training on a range of topics.



Get in touch:

To purchase a buy as you need service or discuss our services, contact us on 01926 412762, or [email us](#).

WES SCHOOL EFFECTIVENESS SERVICE

Strong school leadership at all levels underpins successful and impactful school effectiveness. Our School Effectiveness Service offer will support you and ensure your school is supported with knowledge, empathy and a real commitment to ensure every child achieves their full potential.

WHY USE US

We have proven leadership experience in West Midlands Schools and our team includes a trained OFSTED Lead Inspector. We have access to a range of data, not just pupil performance, to inform meaningful and impactful school improvement.

We have empathy and understanding of the real issues and challenges of leadership in today's climate with an excellent reputation; the team really know how to support and professionally challenge Warwickshire's Schools.

BENEFITS

Our Service:

- Provides bespoke and practical support and potential solutions across a range of broad subjects.
- Gives access to internal partners such as attendance, Early Years, Safeguarding and Governor Services.
- Enhances leadership skills through individual coaching / support sessions.
- Provides advice from experienced and trusted professionals who are positive advocates for the family of Warwickshire Schools
- Has a knowledge base of experts from across the Authority.

BUY AS YOU NEED SERVICES

Our support for schools is offered on a buy as you need basis:

New Headteacher Induction – whether you are new to Warwickshire or new to headship, our headteacher induction will provide you with detailed insight into the role of headship and the support available to you in your role.

Aspiring Headteacher Course – invaluable for succession planning our course, which can be booked through the WES Training Portal, can support you and your school in succession planning for future leadership roles. It will also provide an excellent CPD opportunity for those aspiring to leadership to reflect on their strengths and what will help them develop as a future leader.

Tailored Coaching and Mentoring – we can provide tailored coaching and mentoring for any member of staff in your school or academy to improve staff performance, develop leadership capacity and come to effective solutions around a range of strategic or operational issues.

Headteacher Appraisal – even the best headteachers need some support and guidance at times. Our headteacher appraisal will help highlight good areas of performance but also identify opportunities for improvement and development to help you grow in your current role or plan for your next step up.

OUR SPECIALISMS

- Support with Learning Improvement Plans and Self Evaluation
- Pre, during and post OFSTED support
- Monitoring and evaluation
- Environmental Audits
- Financial planning and support
- Data analysis to inform improvement planning
- Training in a wide variety of school improvement themes
- Peer reviews
- Assessment and Moderation
- Supporting new staff

Tailored School improvement Support – we can provide tailored support to your school or academy to work on identified key issues and ultimately support you on whatever stage your school effectiveness work is at.

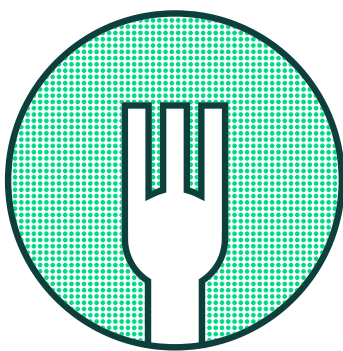
Get in touch:

to purchase buy as you need services or to discuss our services, please [email us](#) or call us on 01926 745621.



CATERING & SCHOOL MEALS SERVICE DELIVERED BY EDUCATERERS LTD.

Our passion for excellence in food matched by a transparent, ethical approach to business creates fresh, healthy food for children and young people.



We work in partnership with NHS dieticians across Warwickshire to support customers with special dietary requirements.

BENEFITS

educaterers



- Service tailored to meet each school's needs so that pupils have healthy, wholesome and enjoyable foods.
- Innovative range of service delivery options to make ordering and collecting meals easy – including the popular 'wristband' system.
- Food for Life Catering Mark.
- Support for individual schools to achieve the gold standard.
- Calendar of themed menus.
- Choice of a range of menu types to keep meals interesting for pupils.
- Support and materials to promote healthy eating, the science behind food, sustainability, and provenance.
- Support for UK, local and regional food producers endorsed by our partnership with Love British Food.



OUR SPECIALISMS

- Exclusive educational caterer.
- Advocates of UK food producers and suppliers.
- Advocates of promoting healthy eating.
- Agile, responsive and flexible company that enables bespoke options to our schools.
- Open, honest and transparent business management.
- People led business.
- Manage locally and not from a distance.

WHY USE US

Educaterers Ltd focuses exclusively on providing school meals. The 620-plus team create and serve over 125,000 fresh, nutritious meals every week using organic meat and dairy products, free range eggs, locally sourced fruit and vegetables and homemade baked desserts.

SUBSCRIPTIONS

Nursery, primary and special schools are offered a two course meal that meets the Government's School Food Standards, management of your kitchen/ dining centre, and development of menus. Meals are paid for by pupils, or through free school meals.

Secondary schools get an efficient cafeteria service. Students order via a biometric cashless payment system to minimise queues and enable parents to see their food choices each day. Enhance your subscription with these add-ons (charged monthly):

- Pest control, through Rentokil.
- The preparation and cleaning of the dining room.
- The transportation of meals to schools with no cooking facilities.

BUY AS YOU NEED SERVICES

Our service can be tailored to meet your individual needs, [contact us](#) if you would like to discuss arranging a tailored package for your school. We also offer a range of buy as you need services including:

- Advisory service for schools providing their own catering services.
- Food related advice, training and guidance.
- Catering consultancy for short term planning, or premises alterations.



Get in touch:

For more information visit the WES website and educaterers.co.uk

To discuss buy as you need services, or a tailored package call us on 01926 743434, or [email us](#).



Primary School Catering Team of the Year 2021
Primary School Catering Team of the Year 2020
Catering Business of the Year 2019

WES HEALTH & SAFETY SERVICE

School-focused sensible advice and support to make it easier for you to provide a safe and secure learning environment for staff, pupils and visitors.

95% of our training is rated as good or excellent.

FOR MORE INFORMATION
ON OUR SERVICES VISIT:
MARWICKSHIRE.GOV.UK/WES



Get in touch:
To purchase our buy as you need services, or to discuss our services call 01926 412440, or [email us](#).

BENEFITS

- Experienced staff who provide support through the telephone helpline and emails.
- Competent, up-to-date advice that meets the Management of Health & Safety at Work Regulations 1999.
- Support to reduce levels of accidents and serious incidents and any associated insurance costs.
- Cost-effective recommendations to meet budgets and comply with legislation.
- Training to enable staff to be aware of their duties and responsibilities.

OUR SPECIALISMS

- The Education Sector.
- Health & Safety.
- Fire Safety.
- Security.
- Swimming Pool Safety.
- Radiation Protection.

BUY AS YOU NEED SERVICES

We offer a range of services to buy as you need. These include:

- Health and Safety Site Attendance and Support.
- Health and Safety training covering Fire Warden, Risk Assessment and Safe Management of Contractor and Health and Safety for Managers.

SUBSCRIPTIONS

Our 'Safety Essentials Service' is the foundation of our offer and needs to be purchased to access other elements of service. Other services are available separately to build on to safety essentials and meet your school's individual needs.

Safety Essentials Service – get advice and guidance with access to an experienced advisor on all aspects of Health and Safety. Customers have access to our online document library and our termly newsletter. Primary schools also get annual membership to Consortium of Local Education Authorities for the Provision of School Science (CLEAPSS) for science, technology, and art advice and resources.

Annual Inspections* – meet Health and Safety, Fire Safety, or Security legislative requirements and best practice. A Competent Health and Safety Advisor will conduct a walkabout, check documentation and procedures, and produce a plan that identifies areas for improvement. We provide one inspection per year and will work with you to identify which inspection would be most effective.

Specialised Inspections – ensure your equipment is safe and fit for purpose. Includes annual inspections of swimming pools and PE & sports equipment and termly inspections of outdoor play equipment.



WHY USE US

We understand the complexity of health and safety law and how time consuming it can be to ensure compliance. Our 20 years of experience in the education sector means we can help you to raise health and safety standards.



The training was very informative; it taught me everything I needed to know about being a fire warden. It has also provided me with the knowledge to go back and analyse previous fire drills to improve fire safety.

They are helpful and offer advice and support whenever needed.

* All reports completed in 15 working days of our inspection.

WES PROPERTY SERVICES: COMPLIANCE

Comprehensive property survey information and support tailored to the needs of Duty Holders in schools.

BENEFITS

- Pragmatic advice from professionals with working knowledge of your school.
- Manage legislative risk and meet statutory asbestos and fire management obligations.
- Save academies time and money with ongoing advice support and training.
- Ensure school water systems will be safe from Legionella.

WHY USE US

Improve your success in bids for capital funds. We prioritise essential works in your medium and long term planning cycles to give you a strategic approach that means you're ready to bid for capital funds as they become available. We also help manage your health, safety and welfare obligations in an easy-to-understand, sensible way.

All subscribers have access to help and advice via telephone on 01926 476850 during the hours of:

8.45am-5.00pm
Monday to Thursday

8.45am-4.00pm
on Fridays

Access to reports and e-learning on the Atlas Website is also included.

SUBSCRIPTIONS

For academies only:

Asbestos Management – meet your statutory obligations defined by Regulation 4 of the Control of Asbestos Regulations 2012. Includes annual asbestos inspection with prioritised report outlining required works and updates to your asbestos register/management plan.

Water Hygiene Risk Assessment – assessment survey every two years, or following major works, carried out by a Legionella Control Association-accredited and experienced assessor. Includes risk assessments, log books and drawings.

Condition Survey – carried out every three years and covers building, electrical and mechanical elements of your academy. Helps day to day maintenance planning and bidding for capital funds.

For all schools:

Fire Risk Assessment – assessment every three years with a summary report and handover call.

Water Temperature Testing Package – ensures all water in your school is safe by monitoring the temperature in line with Legionella L8 Regulations.

Fire Alarms and Emergency Lighting Testing Package – provides fire alarm and emergency lighting tests as per schedule and legislation

BUY AS YOU NEED SERVICES

Please contact us if you would like to discuss arranging a package tailored to your school.

We also offer a range of buy as you need services including:

- Classroom-based asbestos and water hygiene awareness sessions.
- UKATA-certified asbestos awareness training.
- Responsible Person training for asbestos, fire and water hygiene.



Get in touch:

To purchase buy as you need services, or discuss our services call 01926 476850, or [email us](#).

WES PROPERTY SERVICES: FACILITIES MANAGEMENT

We support schools in maintaining high cleaning standards through comprehensive quality assurance (QA) inspections and by delivering professional caretaker training via engaging seminars held during school holidays.

BENEFITS

- Provides caretakers with essential skills and guidance tailored to their roles.
- Promotes best practices in school maintenance and cleanliness.
- Enhances operational efficiency through expert-led training.

WHY USE US

A clean school environment helps ensure pupils have a positive learning experience.

Our service has an in-depth understanding of school caretaker responsibilities and expectations.

OUR SERVICES

Caretaker Seminars

Caretakers have the opportunity to attend professional development seminars three times a year during school holidays in February, July, and October. The interactive sessions are focused on:

- Cleaning standards.
- Health & safety compliance.
- Operational efficiency.
- Networking opportunities with peers and industry experts.

Buy as You Need Services

We have a range of buy as you need services to support your school including:

- Quality cleaning inspections and site mapping.
- Power washing of external areas.
- Space and area assessments for cleaning needs.
- Specialist one-off deep cleans.
- Caretaker training seminars.
- Locking and unlocking of premises.



Get in touch:

To purchase buy as you need services or discuss our services, please contact us on 01926 413452 or [email us](#).

WES PROPERTY SERVICES: MAINTENANCE

We resolve day-to-day maintenance issues and ensure emergency, or unplanned repair works don't escalate and affect teaching.

BENEFITS

Our service:

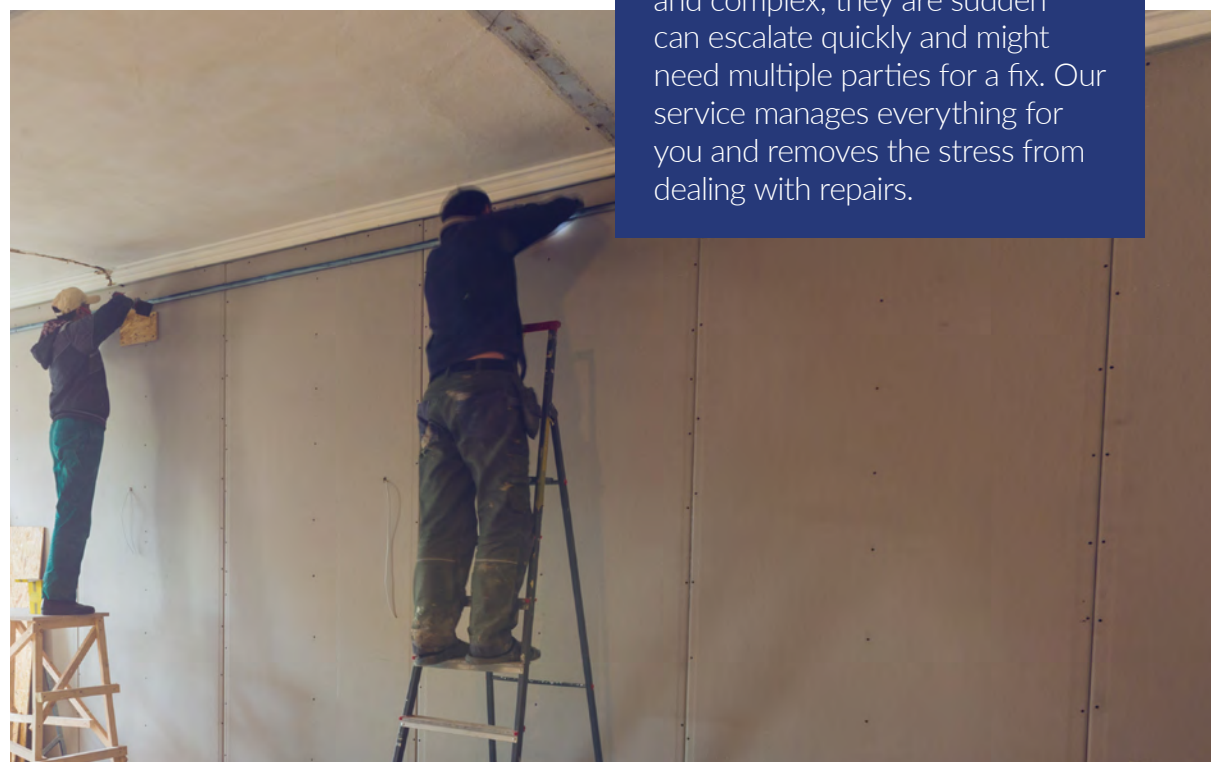
- Minimises the impact of unplanned maintenance on education.
- Saves money on repairs and adaptations.
- Saves time procuring, securing and managing contractors.
- Guarantees a contractor will be on site when needed.
- Provides allocation of a building, mechanical and electrical surveyor.

OUR SPECIALISMS

- Property maintenance.
- Emergency response.
- Mechanical engineering.
- Electrical engineering.
- Refurbishment/extensions.
- Major capital works.

WHY USE US

Reactive maintenance works in schools are often time consuming and complex; they are sudden can escalate quickly and might need multiple parties for a fix. Our service manages everything for you and removes the stress from dealing with repairs.



SUBSCRIPTIONS

For Warwickshire maintained schools our **Property Indemnity Scheme** gives you coverage for a wide variety of reactive property maintenance. The scheme includes:

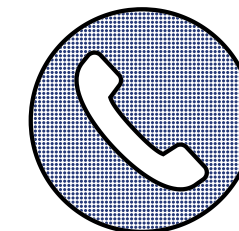
- One point of access for all your property repairs through the Property Hotline.
- Emergency work and reactive repairs.
- Guaranteed availability of contractors.
- Named technical experts for your school to provide consistency.
- Engineering equipment servicing to meet your statutory maintenance obligations.

BUY AS YOU NEED SERVICES

We offer a range of buy as you need services

For schools not buying the Property Indemnity Scheme, our Reactive Property Maintenance Service provides access to all property support charged on a job by job basis. Choose between the basic and enhanced level with the enhanced level including surveyor support. We can also procure and manage Engineering Equipment Servicing.

Consultancy support for Adaptations, Refurbishments and Minor Improvements and Major Projects is available to all schools. A service from inception of a project through to completion – you can choose to purchase the whole service or individual elements to meet your needs.



Get in touch:

To purchase our buy as you need services, or discuss our services, contact us on 01926 736385, or [email us](#).

**100% of reactive calls,
preventing teaching or learning,
attended to within 24hours.**

[BACK TO CONTENTS >](#)

WES FLEET MAINTENANCE SERVICE

We save you time and ensure your vehicles are maintained and safe to use.



Get in touch:

For more information or to purchase any of our buy as you need services, please contact us on 01926 413441, or [email us](#).

BENEFITS

- Know your vehicles are roadworthy, fit for purpose, properly licensed and maintained.
- Meet the statutory requirements of the Road Traffic Act.

WHY USE US

We provide comprehensive fleet maintenance and management facilities on a buy as you need basis at a competitive hourly rate.

BUY AS YOU NEED SERVICES

We offer a range of buy as you need services including:

- Servicing and repair of all makes of car, van and heavy commercial vehicle.
- MOT testing and repair.
- Tail lift inspections and repair.
- Welding and related steel work.
- Mobile repairs and vehicle recovery.
- Vehicle specifications and procurement advice.
- Vehicle inspections and condition reports.

A major customer with 320+ vehicles saves over £100K per year by contracting their vehicle service and repair work to us.



ANY QUESTIONS



Outstanding services that offer real value for money.

Our Customer Care programme provides customers with a central point of access, so you only deal with one person.

The programme helps you to address issues quickly.

How? It captures your feedback and works with you to provide solutions and delivers them with the high customer care standards you expect from WES.

Want to flag something up?

If you wish to raise any queries relating to any service delivery, our individual service helplines will be pleased to hear from you.

If you feel it more appropriate you can contact [WES Customer Care via e-mail at wesgeneral@warwickshire.gov.uk](mailto:wesgeneral@warwickshire.gov.uk) or by calling 01926 412210. Our phone line is open from 9.30 to 2.30 every school day.

