



# **WES SERVICES FOR 2021/22**

**RELIABLE AND AFFORDABLE  
PUPIL, OFFICE AND BUILDING  
SERVICES FOR SCHOOLS**



# CONTENTS

---

4 [How Wes Can Help Your School](#)

---

## PUPIL SERVICES

6 [Warwickshire Attendance Service](#)  
8 [Educational Psychology Service](#)  
10 [Ethnic Minority & Traveller Achievement Service](#)  
12 [Specialist Teaching Service](#)  
14 [Schools Library Service](#)  
16 [Marle Hall Centre For Outdoor Learning](#)  
17 [Integrated Safeguarding Training](#)  
18 [Warwickshire Music Service](#)  
19 [Heritage Education Service](#)

---

## OFFICE SERVICES

20 [Communications & Media Service](#)  
22 [Education Finance Service](#)  
25 [Free School Meals Service](#)  
26 [Governor Services](#)  
28 [HR & Payroll Service](#)  
30 [ICT Development Service](#)  
32 [Legal Service](#)  
34 [Schools Absence Insurance Service](#)

---

## BUILDING SERVICES

36 [Catering & School Meals](#)  
38 [Corporate Facilities Service](#)  
40 [Property Maintenance Services](#)  
42 [Property Risk Management Service](#)  
44 [Safety & Premises Service](#)  
47 [Fleet Maintenance Service](#)

---

*All services are available to both maintained and academy schools unless otherwise specified throughout the brochure.*

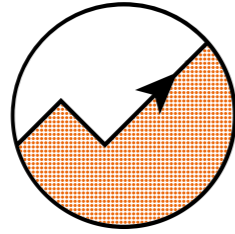
# HOW WES CAN HELP YOUR SCHOOL:

We make it easier for you to run your school.

Our aim is simple – to support schools to achieve their objectives and maximise the value they deliver to pupils, parents and the community.

Our range of specialist services are designed to work in partnership with you to help you to raise attainment, improve operations, develop your staff, develop your resources and ensure legal compliance.

## Get results



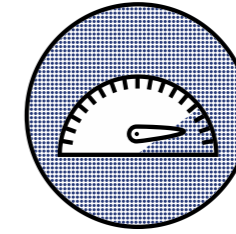
Raising attainment – It's our core business to support schools to raise pupil attainment. WES helps you to help every child fulfil their full potential through our portfolio of educational consultancy and peripatetic education services.

All our pupil services such as the Specialist Teaching Service, Educational Psychology, Schools Library and Heritage Education offer support across the whole spectrum of needs.

## Optimise

Improving operations – WES helps you to optimise your resources to get the most for your money. Our professional consultancy services help you improve operations and complement the skills you already have. Our office services like Education Finance, HR Advisory and ICT Development enable you to get the most from your budgets, staff and ICT.

## People power



Staff Development – Helping you to develop staff with strong skills and knowledge who get the best out of pupils is what we do best.

WES provides training and development opportunities for all staff and can help develop and support your school's leadership, management and governance. Our services like Safeguarding and Governor Services improve the strategic management of your school and all WES services provide training in their areas of specialisms.

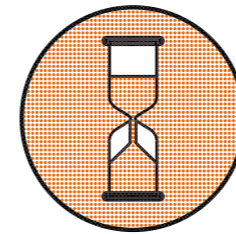


## Peace of mind

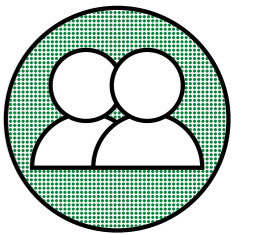
Legal Compliance - We know how complex and wide ranging the legislation surrounding education and schools is. WES gives you peace of mind that you are operating within the law.

Our Legal team provides you with reassurance that a specialist is on hand when you need it and our absence insurance provides key cover for staff.

## Save time



Resource Development and Management – Sometimes there are not enough hours in the day to run a school and management of various systems and critical services can demand a lot of attention. WES can help you manage your assets, your hardware and service supplies as well as your day to day operations to save you valuable time. Our services like ICT and Property related services as well as our Catering and Payroll services provide you with peace of mind that your day to day needs are met seamlessly through one provider.



# WES WARWICKSHIRE ATTENDANCE SERVICE



We work jointly with your school to improve whole school attendance using casework intervention and strategic support.

## BENEFITS

Our service:

- Helps to identify the barriers to school attendance of your pupils through attendance focussed casework assessment
- Identifies appropriate interventions to address barriers to attendance
- Provides casework intervention that can be used as evidence for the prosecution of irregular attendance.
- Provides support to prevent deterioration of individual pupil attendance
- Provides support to develop strategies to improve whole school attendance
- Analyses your attendance data to evidence impact of interventions

## OUR SPECIALISMS

- Casework intervention with children, young people & families
- Specialist attendance advice
- Strategies to improve whole school attendance
- Legal requirements relating to school attendance

## WHY USE US

The majority of our casework interventions result in improved attendance. Where appropriate, we can gather the evidence required for prosecution through escalation and provide advice in more complex cases.

We have the expertise to provide specialist support to help improve whole school attendance. We can provide support with attendance strategies, systems and data.

## SUBSCRIPTIONS

**Education Casework Officers** the Warwickshire Attendance Service can provide a diverse range of attendance related interventions in your school including:

- Casework interventions including: comprehensive assessment, action planning, support and escalation
- Coordinating Pre-Legal Meetings (PLM) and target setting in line with legal requirements
- Attendance at multi-agency meetings where appropriate
- Strategies and support to improve whole school and individual pupil attendance
- Reviewing attendance processes and procedures
- Developing targeted punctuality strategies
- Data analysis

**Helpline Plus** – support on attendance matters via telephone and email advice. This is combined with up to three home visits to provide an assessment of problem and provide an action plan.

## BUY AS YOU NEED SERVICES

Please [contact us](#) if you would like to discuss arranging a tailored package for your school. We also offer a range of buy as you need services:

**Pre-Ofsted Attendance Check** – helps schools gather evidence of their work to improve overall and vulnerable group attendance up to 12 months before an inspection.

**Strategic Support for Improving Attendance** – additional support in the management of attendance. Options include:

- CPD for attendance coordinators
- Establishment of new procedures
- Whole school approach to attendance
- Help for schools to provide evidence of their monitoring/tracking
- Drafting attendance policies/procedures

**Bespoke attendance training**

## Get in touch:

For more information on our subscription services, visit the WES website. To purchase any of our buy as you need services or discuss tailoring our services call 01926 413777.

# WES EDUCATIONAL PSYCHOLOGY SERVICE

The application of psychology to overcome individual and system barriers, enable participation, promote effective inclusive provision locally, and thereby support positive life outcomes.

## BENEFITS

In response to the EPS's highly praised webinars offered during COVID, further webinars will be available on a range of topics in 2021.

- Accurate identification of psychological, emotional, social, academic, achievement, and developmental needs
- Psychological assessment for evidence based intervention and planning
- Improved staff skills, knowledge, expertise and confidence
- Effective system level strategic and operational development
- Increased child and young person engagement, motivation and participation in education
- Improved parent and family confidence in partnership working
- Qualified, independent, professional advice from Educational Psychologists with current knowledge of both National and Warwickshire processes and pathways
- Close links with social care, health and other professional groups

## BUY AS YOU NEED SERVICES

We offer a range of BAYN services including support packages to enable interventions in schools, individual sensory assessments, whole school audits of provision, a broad range of training opportunities, and activities otherwise listed.

The EPS subscription model is more cost effective than purchasing individual BAYN sessions and at times of service capacity pressure, the EPS will cease BAYN availability.

## OUR SPECIALISMS

- Psychological analysis
- Problem solving, solution finding and collaboration
- Direct support to children, young people and their families
- Staff training and broader support to implement and monitor interventions and approaches
- Individual psychological assessment to identify appropriate interventions

## SUBSCRIPTION

A subscription with the Educational Psychology Service (EPS) provides a named educational psychologist (EP) who will support you and your setting, targeting whole school / setting objectives such as raising attainment and planning for the specific psychological, educational, social and emotional needs of individual children or young people.

Service time is purchased in 3 hour sessions and includes contact and non-contact elements. Your EP will work with staff to ensure best value from your subscription. The EPS can work flexibly, including out-of-hours, to suit the needs of your community and the tasks/activities that are negotiated. Support includes:

- Direct support to social, emotional, and mental/psychological health intervention, planning and delivery
- Emotional coaching, nurture informed inclusion, trauma informed approaches
- Evidence based approaches for Cognition and Learning
- Critical Incident support (bereavement, sudden death of members of the school community, or local incidents requiring psychological support or guidance)
- Therapeutic interventions in educational settings (e.g. Cognitive Behaviour Therapy, Narrative Therapy, Motivational Interviewing, Acceptance and Commitment Therapy)
- Staff, parent/carer, other professional training, confidence building and skill development
- Support for adopted, fostered and Children looked after
- Expertise in neuro-developmental conditions
- Preparation for adulthood and Post 16
- Early Years
- Support to adults involved with those in the Youth Justice system
- Supervision and mentoring of school staff



### Get in touch:

for more details contact your School EP or Area Senior EP or call 01926 742911.

# WES ETHNIC MINORITY & TRAVELLER ACHIEVEMENT SERVICE (EMTAS)

We provide highly experienced staff to help you meet the needs of all pupils from the Gypsy, Roma and Traveller (GRT) community, and pupils with English as an Additional Language (EAL).

## BENEFITS

Our service:

- Helps build positive family/school relationships through home school liaison
- Helps you to close the attainment gap and ensure EAL and GRT pupils reach their maximum potential
- Supports language and academic progress of EAL pupils
- Develops your staff expertise and knowledge base
- Works across a range of agencies to assess and meet the needs of EAL/GRT-SEND pupils

## OUR SPECIALISMS

- New to English learners
- EAL/SEND
- Advanced EAL
- GRT pupils
- Home-school liaison
- Bilingual services

## WHY USE US

Our multilingual and culturally fluent language development advisers and intervention specialists have extensive experience of working in schools to remove barriers to learning for EAL pupils.

Our specialist education workers provide effective support and advice to help you meet the specific needs of GRT pupils and their families, and improve outcomes for your setting.



95%

of schools said the impact of our service was good or excellent.

## BUY AS YOU NEED SERVICES

Our support for schools is offered on a buy as you need basis:

**EAL Support** – provides a strategic and responsive approach to meet the needs of EAL learners at all stages of language acquisition.

Supports quick integration of new to English pupils into mainstream school and advanced bilingual pupils benefit from EAL practice to promote acquisition of academic language. Types of activities include:

- EAL assessments
- EAL SEND assessments
- Direct and whole school support for EAL and EAL SEND pupils
- EAL new arrivals assessment training
- EAL SEND training
- EAL coordinators network meetings
- Bespoke training packages (e.g. EAL classroom strategies), advice and guidance
- EAL in the Early Years training

**GRT Support** (free to Warwickshire maintained schools) – targeted one-to-one, group or in class interventions delivered by an experienced education support worker. The types of activities you can purchase are:

- Targeted 1:1 group or in class interventions
- Home-school liaison
- Direct educational support including transition work
- GRT cultural awareness training
- Capacity building
- Lead professional or support for Early Help Assessments
- Support for GRT students accessing alternative provision

## Get in touch:

To purchase our buy as you need services or to discuss our services further, [contact us](#) on 01926 476600.

# WES SPECIALIST TEACHING SERVICE (STS)

Build capacity in your school. We offer unmatched depth and breadth of experience that helps meet the needs of your vulnerable pupils and raise standards for pupils with Special Educational Needs and Disability (SEND).

## BENEFITS

Our service:

- Supports you to raise standards and improve outcomes for pupils with SEND
- Has a positive impact on learners' progress against individual education plans
- Helps to build capacity and remove barriers to learning

## BUY AS YOU NEED SERVICES

Our services are flexible and can be tailored to meet your individual needs. Our buy as you need services include:

- Training and capacity building aimed at enhancing skills and understanding of SEND
- Access arrangements
- Coaching and mentoring
- Bespoke packages for individual pupils

## OUR SPECIALISMS

- Strategic SENCo support
- SEND capacity building
- SEND professional development
- Cognition and learning
- Autism
- Selective Mutism
- Social Communication and Interaction
- Speech, Language and Communication including Developmental Language Disorder
- Social, Emotional and Mental Health

## WHY USE US

Our excellent knowledge of Warwickshire's systems and processes enable us to meet your needs through one point of contact. The service can be tailored to meet the individual needs of pupils in your school and contribute to whole school improvement.



*Your staff are hardworking, caring, professional and do a wonderful job. Couldn't ask for more commitment from them.*

## SUBSCRIPTIONS

**Specialist Teaching Service** – a strategic and responsive approach to meet the needs of children, particularly those with additional needs. We support your educational vision, and put effective systems in place to ensure targeted support has the impact you demand. Our sessions are delivered on site and your subscription also provides you with access to training and other events as well as a discount on additional hours and training.

We can help you:

- Keep up-to-date with changes in national policies and legislation
- Deliver effective provision in line with the SEND Provision Matrix
- Build SEND provision capacity in your school
- Deliver evidence based interventions
- Assess and screen pupils
- Prepare a pre-Ofsted health check
- By contributing to Education, Health and Care Plans and monitoring provision
- With the implementation of programmes for individual pupils or groups of pupils
- Train your Teaching Assistants to run groups
- Monitor and provide general care, safety and welfare for pupils
- Support the class teacher with differentiation, universal provision and working with children with SEND
- With the Assess Plan, Do, Review cycle
- With the Early Help process
- With parent / carer workshops



## Get in touch:

for more information on our subscription services, visit the WES website. To purchase buy as you need services or to discuss a tailored package, please call us on one of the below numbers:

**Northern area**  
01926 413777

**Centre/south area**  
01926 476600

**Eastern area**  
01926 418130

# WES SCHOOLS LIBRARY SERVICE

We support Government and Ofsted objectives and help you save on curriculum and reading resources.



**Borrowing from us might save your school around £5,000** on the purchase price of the equivalent number of books.

## BENEFITS

- It's cheaper to borrow books from us. The average cost of a new book is £8, the average price to borrow one of ours is just £2
- Our staff ensure books are up to date, relevant and of the highest quality
- Our services are wide ranging and diverse in their appeal to students at every key stage, helping to raise both awareness and empathy

## OUR SPECIALISMS

- Refurbishing your school library, and stock audit and advice
- Cost effective selection of books
- Advice on library management systems
- School staff CPD and pupil librarian training
- Book awards and other reading initiatives for students
- SLS-UK School Library Award

## SUBSCRIPTIONS

### Reading for Pleasure Subscriptions for all Schools

**Primary Reading for Pleasure Subscription** – includes an annual loan of 100 fiction books to support wider reading within your school, participation in the Year 4 Reading Celebration in the spring term for up to 30 pupils. It also includes participation in the Warwickshire Junior Book Award in Y5/6 including a set of shortlisted books and a 40 minute book talk session or a set of the Greenaway Medal shortlisted titles and a toolkit.

**Secondary Reading for Pleasure Subscription** – includes participation in and one set of new books, jacketed, delivered to school for each of the books on the shortlists of the Warwickshire secondary and Year 9

book awards and on the Carnegie / Greenaway shortlist during the subscription year as well as two x 40 minute book talks in school facilitated by SLS staff.

The following **Subscriptions** offer termly topic boxes and annual loans of books to support reading for pleasure in your school. Relevant artifacts are added free of charge where possible. Delivery to and collection from your school is included and all subscribers benefit from a one hour advisory visit, telephone advice and assistance, and discounts on book awards and book purchases.



Let us help you encourage a lifelong love of reading and learning.

FOR MORE INFORMATION ON OUR SERVICES VISIT: [WARWICKSHIRE.GOV.UK/WES](http://WARWICKSHIRE.GOV.UK/WES)

## PRIMARY AND SPECIAL SCHOOLS:

Subscription	Annual Provision
Pods	7 learning resource boxes and 150 reading for pleasure books
Seeds	9 learning resource boxes and 150 reading for pleasure books
Young Shoots	21 learning resource boxes and 350 reading for pleasure books
Saplings	27 learning resource boxes and 450 reading for pleasure books
Trees	42 learning resource boxes and 600 reading for pleasure books
Forest	51 learning resource boxes and 800 reading for pleasure books

## SECONDARY SCHOOLS:

Subscription	Annual Provision
Roots – Curriculum	12 learning resource boxes
Roots – Fiction	250 reading for pleasure books
Beech	10 learning resource boxes and 650 reading for pleasure books
Oak	12 learning resource boxes and 800 reading for pleasure books

We are a flexible service and can offer bespoke packages if our standard subscriptions don't suit you. We can also adapt your package if you would like this at any point during the year. Please contact us to discuss your bespoke requirements.

## BUY AS YOU NEED SERVICES

We offer a range of library services on a buy as you need basis, please [contact us](#) to discuss your requirements.



## WHY USE US

Our high quality resources enhance yours to enable students to achieve in their own reading and learning. And our reading initiatives help you to create a reading school.



# WES MARLE HALL CENTRE FOR OUTDOOR LEARNING

Based on the beautiful North Wales coast, we provide a range of outdoor learning programmes to enrich the delivery of the Curriculum.

## BENEFITS

- Promote personal and social development through our ethos of challenge, responsibility, respect and teamwork
- Stimulate and inspire pupils' learning for an enriched curriculum
- Foster a connection with the natural environment

## BUY AS YOU NEED SERVICES

We can accommodate up to 100 people at our residential centre in North Wales. We offer a range of cost effective programmes, such as:

- Residential outdoor learning courses tailored for primary, secondary and sixth form groups including activities such as mountain walking, rock climbing, gorge scrambling, canoeing, coasteering, teambuilding and much more
- GCSE and A level Geography residential courses which utilise local coast lines, towns and the Snowdonia national park
- Duke of Edinburgh Award residenceals and expeditions
- Self-led study trips
- Bespoke adventurous activity or skills courses

### Get in touch:

For further information visit [warwickshire.gov.uk/marlehall](http://warwickshire.gov.uk/marlehall) or call 01492 581218

# WES INTEGRATED SAFEGUARDING TRAINING

Support for your school to fulfil its statutory responsibilities for safeguarding and promoting the welfare of children.

## BENEFITS

- Our training courses provide your staff with the awareness and knowledge they need to safeguard children and young people
- Our training forms part of the wider safeguarding advice, guidance and support service providing you with seamless support in this area of work
- Your designated safeguarding leads will get the information needed to develop their expertise and be connected into locality support
- You will be connected to other essential training, networks or avenues of free training and support



*Thank you.  
The training was precise and expertly delivered.*

## BUY AS YOU NEED SERVICES

We offer a range of courses for individual staff, governors or whole staff groups. Available courses include:

- **Newly Appointed Designated Safeguarding Leads (DSL)** – one day programme for staff with responsibility for child protection and safeguarding
- **Refresher training for DSLs** – half a day refresher course that provides DSLs with updated information.
- **Early Help (Pathway to Change)**
- **Prevent Training** – comprehensive guide to current threat and risks around radicalisation, to assist DSLs address the practical issues surrounding the Prevent Duty.
- **Reducing Parental Conflict** - short course to understand the impact of parental conflict on children.
- **Understanding Children's behaviour / Benefits of Good Routines and Boundaries** – these two highly effective programmes help schools understand children's behaviour and have increased confidence in teaching staff in schools.
- **Reflective Supervision Skills** – supporting experienced DSLs to develop their skills in supervising and supporting staff in order to safeguard children effectively.
- **Restorative Conversations** – An introduction to restorative and relational practice
- **Restorative Practice Training**
- **Importance of Safeguarding Boards and Partnerships** termly briefings.

### Get in touch:

For more information or how to book onto our training courses please visit: [safeguarding.warwickshire.co.uk](http://safeguarding.warwickshire.co.uk) or contact us on 01926 742601 / 742525.

# WES WARWICKSHIRE MUSIC SERVICE

We support high quality music education and work with over 10,000 young people every week.

## BENEFITS

Our Service:

- Provides professional teachers with full safeguarding and child protection training
- Guarantees peace of mind regarding all GDPR issues through our on-line student registers
- Responds to needs of our partner schools through new initiatives such as 'Wellbeing' teaching groups that support students and 'Singing for Sounds' to support language development in Early Years



*Rugby Free Secondary school is delighted to be working closely with our colleagues from Warwickshire Music*

*Warwickshire HeadTeacher*



## BUY AS YOU NEED SERVICES

The Warwickshire Music Service is offered on a buy as you need basis. Services include:

- 1:1, small or large group instrumental/vocal teaching across all key stages
- Advice and support in relation to any aspect of music provision
- Curriculum lessons
- Early Years provision
- FREE instrumental loan in first year of tuition
- Music technology support, training and resources
- Music therapy
- Schools conference, training, school INSETs and workshops
- SEN music provision at all levels
- Whole class 'first access' instrumental and vocal lessons
- Whole school choral projects

### Get in touch:

For more information or to buy our services call 01926 742630, or visit [warwickshiremusichub.org](http://warwickshiremusichub.org)

# WES HERITAGE EDUCATION SERVICE

We bring the past to life through creative and immersive workshops that will inspire your students.

## BENEFITS

- Our workshops link directly to the national curriculum
- Your pupils will have access to original artefacts and documents
- St John's House Museum holds the Learning Outside the Classroom Badge
- Workshops delivered by experienced teaching staff

## BUY AS YOU NEED SERVICES

The Heritage Education Service is offered on a buy as you need basis. Highlights include:

**Exploration** – workshops available to support a range of STEM and history curriculum topics at St John's House Museum, County Record Office and Market Hall museum, Warwick or at our classroom at Kingsbury Water Park.

**Bring us into your classroom** – let us visit you in the class room with Ancient Egyptian artefacts or a whole day exploring the Stone Age. Other workshops are available.

### Get in touch:

for more information or to purchase our buy as you need services, call Heritage Education on 01926 412069, or visit [heritage.warwickshire.gov.uk/heritageeducation](http://heritage.warwickshire.gov.uk/heritageeducation)

**Immersive experiences** – step back in time at St John's House Museum and discover life as a Victorian child. Look out for our seasonal workshops in the summer and at Christmas.

**Jurassic journey** – hunt for Jurassic fossils with our Rocks and Fossils workshop at Cross Hands Quarry.

**Extend your experience** – borrow a loans box with original and replica historic objects to continue inspiring your class back in the classroom.

We provide you with:

- Support throughout the booking process
- Opportunity to adapt your visit around the needs of your class
- Lunchroom facilities
- Pre-visit information and risk assessments provided

# WES COMMUNICATIONS & MEDIA SERVICE

**500**  
media enquiries relating to  
school matters each year.

Expert advice and support delivered with unrivalled value for money.

## BENEFITS

- Build and maintain a strong community reputation
- Maximise media relationships
- Handle communications and the media in times of crisis and bad news

## WHY USE US

- To raise your profile and maximise promotional opportunities
- To celebrate success
- To get advice and support on making the best use of all available media
- To build and maintain your schools reputation

## OUR SPECIALISMS

- Media management
- Graphic design
- Print and production
- Video production
- Stakeholder engagement
- Copywriting
- Internal communications
- Promotional campaigns
- Photography
- Event management

## SUBSCRIPTIONS

**Reputation management/ bad news support** – for advice, written statements and strategies to deal with the demands from communities, and the media in times of crisis. We provide media training and coaching for spokespeople, and a physical presence on site to help you manage any media that may arrive.

This package provides you with **10% discount** on any buy as you need promotional support.

### Get in touch:

For more information visit the WES website. For buy as you need services, or to discuss a tailored package, call us on 01926 414162.

## BUY AS YOU NEED

Please contact us if you would like to discuss a tailored package for your school. Services include:

- Video production
- Media management
- Graphic design
- Print and production
- Copywriting
- Promotional campaigns
- Photography
- Event management

We have three buy as you need packages for schools:

**Celebrate** – support for a good news story and includes creation of a news release, half a day of photography, circulation of the news release to the media and management of follow up media enquiries.

**Promote** – one piece of design work for promotions such as a prospectus, advertising campaign, website or signage.

**Produce** – one piece of multi-media production for example filming a promotional video or photography.

# WES EDUCATION FINANCE SERVICE

We make it easier for you to deliver the best value from limited financial resources and build positive outcomes for learners.



Super service, personal and helpful to the needs of our school.

Warwickshire Headteacher

## BENEFITS

Our service:

- Helps you to meet the strategic objectives identified in your School Development Plan through setting and monitoring budget priorities
- Makes the process of managing school finances quicker and more efficient
- Offers technical system support on a range of finance packages

## OUR SPECIALISMS

- Strategic financial planning
- Budget monitoring
- Technical system support
- Compliance with financial regulations
- Training and development
- Financial consultancy
- Audit of Teachers' Pension Scheme

## BUY AS YOU NEED SERVICES

Contact us direct to discuss a tailored package for your school. Our buy as you need services include:

- Financial dashboard
- Financial health check
- Automated pay check facility
- Training in a variety of areas
- Additional visits and attendance at governors meetings
- Recruitment and selection support
- Short term cover for finance vacancies in school
- For academies, the production of statutory budget returns

### Get in touch:

For more information visit the WES website. For buy as you need services or to discuss a tailored package, call us on 01926 412730 or 01926 418144.

## SUBSCRIPTIONS

We offer a range of subscriptions to enable you to choose the level of support your school needs

**The Financial Management Support Service** offers four levels of cover each providing you with a named finance officer, a strategic multi-year financial plan, financial support through visits and our helpline, use of our Budget Planning Software and IT support for SIMS FMS. Choose from:

- **Standard Service** – including one three hour visit and a written report to Governors each term.
- **Enhanced Service** – two three hour visits and one report to Governors each term. You can choose an additional service per term from the list on the WES website.
- **Enhanced Plus Service** – providing financial support for two linked schools/settings which includes two strategic meetings per term.
- **Bursar Service** – tailored to meet your individual needs through ten monthly three hour visits per year.

For schools using SIMS FMS who require a more light-touch level of support, **SIMS Finance System Support** is available providing you with access to a helpline for system and technical queries in relation to SIMS FMS. System upgrades and guidance on new functionality is also included. A termly visit can be added to this option. For academies we will also support you to make VAT returns and produce bespoke reports.

For academies, we also offer an **Internal Audit Support**:

- The **Basic** level provides two visits per academic year to test and review processes and produce an internal audit report.
- The **Enhanced** level builds on the basic service and includes an extra visit to focus on reviewing policies and procedures.



## WHY USE US

Effective financial management in schools is essential as budgets tighten and costs rise.

We support you to optimise resources effectively and make sound financial decisions. Our wide range of services mean we can support you at the highest level through the provision of a Business Manager right through to supporting and empowering your own business managers and finance staff to carry out tasks.

# WES FREE SCHOOL MEALS SERVICE

A complete solution for all aspects of the Free School Meals application process.

## ANY QUESTIONS



### Outstanding services that offer real value for money.

Our Customer Care programme provides customers with a central point of access, so you only deal with one person.

### The programme helps you to address issues quickly.

How? It captures your feedback and works with you to provide solutions and delivers them with the high customer care standards you expect from WES.

### Want to flag something up?

If you wish to raise any queries relating to any service delivery, our individual service helplines will be pleased to hear from you.

If you feel it more appropriate you can contact [WES Customer Care via e-mail at wesgeneral@warwickshire.gov.uk](mailto:wesgeneral@warwickshire.gov.uk) or by calling 01926 412210. Our phone line is open from 9.30 to 2.30 every school day.

## SERVICE FOR ACADEMIES ONLY

### BENEFITS

- Save time – you won't need to manually check eligibility for free school meals
- Maximise Pupil Premium payments
- Promote healthy eating at school
- Each eligible student generates up to £1,320 of funding

#### Get in touch:

For more information on our subscription visit the WES website or contact us on 01926 742055.

### SUBSCRIPTIONS

A complete solution for the assessment and processing of applications for free school meals.\* Parents can apply online, in person or via telephone – ensuring a wide range of access to suit all needs. Our online system enables telephone and online applications to be checked against live data held by the DfE immediately. Schools have direct access to our system and can easily see which students are eligible for free school meals. Accurate data enables schools to maximise Pupil Premium payments.



\*Academies are notified on the same or next working day of a successful application.

# WES GOVERNOR SERVICES

We help ensure your governing board has the knowledge, skills and confidence to exercise effective governance of your school.

## BENEFITS

Our service:

- Provides practical solutions, not just theory
- Enhances governor skills through our extensive training programme
- Offers support and advice to governors, clerks and headteachers

### WHY USE US

Effective governing boards work with headteachers to improve outcomes for pupils. Our service provides training, support and guidance to develop effective governance structures that helps you deliver the best possible outcomes for your pupils and meet statutory duties.

## OUR SPECIALISMS

- Extensive governance training, advice, guidance and support
- Linking effective governance to pupil outcomes
- Professional clerking
- Supporting governor roles and responsibilities
- External governance reviews

90%

of Warwickshire governing boards attended our training last year.

## SUBSCRIPTIONS

**Governor Development Subscription** – includes unlimited access by any number of governors to all our governor training courses. In addition to training and development opportunities subscribers benefit from comprehensive and professional support for governors including:

- a monthly newsletter
- a document resource library
- an invitation to attend a monthly governor/chair/clerk remote meetings
- unlimited advice and guidance in person or via email and/or telephone
- a tailored in-house training session customised for your governing board's needs

**Multi-School Subscription** – as schools work together in clusters or consortiums this subscription enables them to develop their working relationships and benefit from joint training and development opportunities together with the benefits of the Governor Development Subscription.

**Clerking Service** – the clerk to governors plays a pivotal role in the smooth and efficient functioning of your governing board. We will provide you with a clerk who in addition to producing the minutes of your GB meetings will offer advice and guidance on all aspects of governance – including procedures and areas of compliance.

**GovernorHub Subscription** – an online portal used by over 7,000 schools around the country, created for governors by governors to support them in managing their role. GovernorHub helps boards to be more effective by saving them time and printing costs and allows governors to stay in touch with each other and work more effectively and efficiently as a team.

## BUY AS YOU NEED SERVICES

Contact us to discuss a tailored package for your school. We also offer a range of buy as you need services:

- In house training sessions
- Additional clerking board meetings
- An external review of governance, including the follow up review
- Recruitment & selection support for the Board
- Head teacher Induction Programme
- Facilitated Mini Review/ Self Evaluation Session
- An audit of your School website
- Support for Complaints, Grievance & Exclusions Panels
- Mediation Support

### Get in touch:

For more information visit the WES website. To discuss our buy as you needservices or a tailored package, please call us on 01926 745137.

# WES HR & PAYROLL SERVICE

We help schools succeed through proactive, targeted support and advice to facilitate excellent people management. Our service will save you money and improve staff productivity.



## BENEFITS

Our service:

- Helps you manage under-performance, conduct and absence so you can deliver the best outcomes for your pupils
- Has links with a range of partners and national agencies so we are quick to respond to legislative changes
- Supports you to get the best candidates from recruitment campaigns
- Gives you confidence your staff will be paid accurately and on time
- Gives you one number to call for all your HR and Payroll related queries

## OUR SPECIALISMS

- Payroll process and legislation
- Specialist HR advice on teachers and support staff
- School recruitment
- Disclosure and Barring Service
- Specially tailored training courses and briefings
- Up to date legislative and statutory knowledge

### WHY USE US

Our integrated service supports excellent people management in schools, and saves you time. We provide comprehensive advice and support online, over the phone, and face-to-face with our highly effective payroll service.

## SUBSCRIPTIONS

**HR Advice Direct Subscription** – provides proactive, targeted support. As well as full access to the WES website and the Customer Services Team, you will have unlimited telephone access to a qualified specialist HR Adviser who can provide support on a range of employment matters which include: change processes involving staffing reductions; restructures and TUPES; safeguarding; performance management; grievance; disciplinary and suspensions; pay; grading and more.

You also get up to two hours of WES legal support to provide timely, risk assessed advice.

You can enhance this subscription by purchasing face-to-face support on a buy as you need basis.

**Employee Well-Being Support Service** – school employees and their partners will have unlimited access to a dedicated telephone support line and website available 24 /7, 365 days a year. Unlimited counselling and therapy sessions based on an assessment on an individual's requirements is also included for school employees.

**Payroll Service** – provides payroll processing of gross to net pay, ensuring your staff are paid accurately and at the required time each month. All third party payments are managed and statutory returns made for you.

### BUY AS YOU NEED SERVICES

Please contact us if you would like to discuss a tailored package for your school. We also offer a range of buy as you need services:

- Bespoke packages offering a fully tailored HR solution
- Face-to-face support from an HR Adviser on a per hour or half day basis
- Recruitment Services from job postings to fully supported recruitment campaigns
- Disclosure and Barring Service (DBS)
- Training across a range of HR activities

**Get in touch:**  
For more information visit the WES website. To discuss buy as you need services or a tailored package call our customer service team on 01926 418614.

*Experienced, qualified practitioners who understand your business, offering value-for-money and customer service that contributes to your success.*

# WES ICT DEVELOPMENT SERVICE

Our service supports you to make secure, innovative use of technology to improve outcomes. We work with you to keep your school safe and connected so that you are able to focus on education.



We have a dedicated Service Desk for all your ICT issues and requests.

## BENEFITS

### Get in touch:

For more information visit the WES website. To access our buy as you need services, or to discuss a tailored package call our Service Desk on 01926 414100.

Our service:

- Ensures critical IT systems function at optimum levels
- Supports you to keep children safe online
- Works with you to support your staff to become confident users of ICT and to equip your learners with adaptable skills ready for the workplace of the future
- Provides fully tested equipment, software and systems that are focussed on education and learning
- Interprets new legislation and develops solutions to save you time
- Provides a one stop shop to meet all your ICT needs

## OUR SPECIALISMS

- Strategic ICT planning
- ICT systems and technical management
- Procurement
- Online safety and digital safeguarding
- SIMS support, development and training
- Learning days and curriculum ICT training

### WHY USE US

We understand the complexities of using and managing ICT within a school environment and support you to implement cost effective solutions that will raise standards in teaching, learning and school management.

## BUY AS YOU NEED SERVICES

Our services can be tailored to meet your individual needs. Contact us if you would like to arrange a tailored package for your school.

We also offer buy as you need services including procurement of desktop PCs, laptops, Apple devices, Chromebooks, audio visual equipment, wireless services, training across a wide range of ICT and computing topics and additional technical and management information support.

## SUBSCRIPTIONS

### Strategic Advice and Support Service

Our experienced team of advisers provide strategic advice, support and a range of continuing professional development opportunities which focus on the development and use of ICT e.g. computing curriculum, online safety and new technologies. You will also have an appointed link adviser, unlimited email and phone support and advice, up to half day adviser time in school, and delegate places and discounts on our events and conferences.

### Management Information, Development, Advice and Support (MIDAS) Service

– provides support and training to maximise your use of SIMS and data to support teaching, learning and safeguarding. A premium version of this service enhances the support you receive with either a half-termly, or termly three hour visit to cover your priority MIS support tasks.

**Broadband Service** – provides secure and protected connectivity to the internet through a resilient pair of next-generation firewalls and high capacity JaNET links providing secure and fast connectivity to services such as Office 365, Google Apps and Microsoft. This service also includes network management and secure internet filtering allowing WES ICT to take care of the responsibility of safeguarding your pupils from online harms.

**Technician visits** – three hour visits at a frequency to suit you.

**Wireless support** – provides technical support for the Khipu wireless network.

### Digital Safeguarding Service

– provides real time internet and desktop monitoring of Windows, MAC and Chromebook devices for legislative compliance and is focussed on meeting the requirements of the Keeping Children Safe in Education and PREVENT agendas.

**Welearn365** – the unique Warwickshire bundle that brings together a range of applications into a collaborative learning platform. It also includes the automatic set up and maintenance of email accounts from SIMS. For secondary schools, it also includes TASC Insight – a parent/school interface.

**J2E Resources** – provides a variety of tools to support learning in the classroom.

### Technical Support for Servers

– provides support for servers under warranty. For primary schools, support for PCs and laptops supplied by our service is also covered.

### Microsoft Enterprise Agreement

– provides access to the Microsoft suite of programmes.

**Server Backup and Restore** – provision maintenance and support of a customised back up and restore solution using Redstar.



# WES LEGAL SERVICE

On-demand legal support.

95% CUSTOMER SATISFACTION

FOR MORE INFORMATION  
ON OUR SERVICES VISIT:  
WARWICKSHIRE.GOV.UK/WES

## BENEFITS



- Remove the stress of complex school-law cases
- Immediate advice and guidance via our Legal Hotline
- Hourly subscription rate three times cheaper than external support
- One team covers all legal needs
- Peace of mind in emergencies

### Need some help?

Call our hotline on 01926 412361.

## WHY USE US

We have helped relieve stress, and delivered robust legal advice to the education and commercial sectors for over 25 years.

Routine or complex: our customers know they can call us for specialist advice and support to meet the legal challenges of the education sector.

## OUR SPECIALISMS

- Legal education specialists
- Pupil-related matters – special educational needs, admissions and exclusions
- Child protection and safeguarding
- Property related matters – landlord, tenant, and conveyancing matters
- Commercial contracts, licence agreements, and procurement
- Anti-social behaviour, social media
- Pensions and related matters
- Employment matters
- GDPR, data protection and freedom of information



## SUBSCRIPTIONS

**Legal Service** – provides up to ten hours of legal advice over the year. If you need more hours please [contact us](#) for a quote.

Your subscription provides you with a single point of contact through a telephone hotline, Monday to Friday.

The hotline can respond to straightforward matters without delay and refer complex / specialised matters to colleagues with relevant expertise.

### No surprises.

Reached your allocation of hours? No problem. Extra support is available on a buy as you need basis, and we always provide a quotation.

**Data Protection Officer Service** – this comprehensive service helps you meet the requirements of the General Data Protection Regulation (GDPR). Working in partnership with your senior leadership team and staff who manage data, this service delivers all the work of a Data Protection Officer (DPO), it:

- Provides a named officer, with support from our specialist DPO service team and legal advisors
- Monitors compliance with the GDPR and other data protection law, including support for managing internal data protection activities, advising on data protection impact assessments, training staff and conducting internal audits
- Acts as the first point of contact for supervisory authorities and for individuals whose data is processed
- eLearning for your staff
- Annual audit

## BUY AS YOU NEED SERVICES

You can purchase legal support at an hourly rate which can be found on the WES website.

We also offer:

- Independent review panels
- Training on a range of topics



### Get in touch:

For more detail visit the Service Specifications page on the WES website. To discuss a buy as you need service or tailored package, contact us on 01926 412174.

# WES SCHOOLS ABSENCE INSURANCE SERVICE

Our service saves you time and money and provides you financial security to plan annual staffing budgets with confidence.

## BENEFITS

Our service:

- Makes quick decisions so you won't experience payment delays
- Provides monthly reimbursements even when claims are ongoing
- Saves your school money by you not having to fund additional staff cover through your existing budget

## WHY USE US

Unplanned absences can put pressure on budgets in today's difficult financial environment. Our 15 years of evidence of claims from schools means we're focussed on the most cost effective solutions.

Our range of options give you flexibility to choose the exact level of comprehensive cover to suit your school's needs. There's no excessive paperwork – we require one weekly online claim form.

## OUR SPECIALISMS

- Teaching absence cover
- Non-teaching absence cover
- Maternity cover

**100%**  
*of claims are reimbursed within four working weeks of the end of the claim month.*

## SUBSCRIPTIONS

**Teaching and Non-Teaching Absence Cover** – cover is available from day one, four, or day 11 of an absence and covers illness, suspension and jury service as well as compassionate and statutory paternity leave. There are two packages:

**Standard** – covers up to 60 days reimbursement for absences related to stress, anxiety and depression. All other absences are reimbursed in full as per the policy documents on the WES website.

**Premium** – covers full reimbursement for absences related to stress, anxiety and depression. All other absences are reimbursed in full as per the policy document on the WES website.

Teaching schemes provide reimbursement at a daily rate and non-teaching schemes work on an hourly reimbursement rate – rates are available on the WES website.

**Teaching and Non-Teaching Maternity Cover** – we offer two subscription levels for maternity cover. Both take into account all Statutory Maternity Payments, National Insurance and Pensions costs for the whole period of maternity leave and there are no maximum payments:

**Capped** – reimburses you 75% of the eligible costs of Occupational and Statutory Maternity payments.

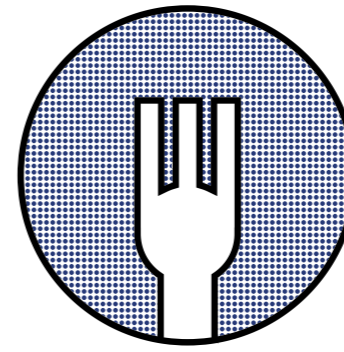
**Full** – provides full 100% of the eligible costs of Occupational and Statutory Maternity payments.

## Get in touch:

For more information visit the WES website, or call us on 01926 742420, or email [sicknessinsurance@warwickshire.gov.uk](mailto:sicknessinsurance@warwickshire.gov.uk)

# WES CATERING & SCHOOL MEALS SERVICE DELIVERED BY EDUCATERERS LTD.

Our passion for excellence in food matched by a transparent, ethical approach to business creates fresh, healthy food for children and young people.



We work in partnership with NHS dieticians across Warwickshire to support customers with special dietary requirements.

## BENEFITS



- Service tailored to meet each school's needs so that pupils have healthy, wholesome and enjoyable foods
- Innovative range of service delivery options to make ordering and collecting meals easy – including the popular 'wristband' system
- Silver Food for Life Catering Mark.
- Support for individual schools to achieve the gold standard
- Choice of a range of menu types to keep meals interesting for pupils
- Support and materials to promote healthy eating, the science behind food, sustainability, and provenance



## OUR SPECIALISMS

- Education catering
- Themed menus
- Special events and meal deals in secondary schools
- Catering for functions
- Promoting healthy foods
- Compliance with all relevant legislation
- Training

### WHY USE US

Educaterers Ltd focuses exclusively on providing school meals. The 700-plus team create and serve over 125,000 fresh, nutritious meals every week using organic meat and dairy products, free range eggs, locally sourced fruit and vegetables and homemade baked desserts.

## SUBSCRIPTIONS

**Nursery, primary and special schools** are offered a two course meal that meets the Government's School Food Standards, management of your kitchen/dining centre, and development of menus. Meals are paid for by pupils, or through free school meals.

**Secondary schools** get an efficient cafeteria service. Students order via a biometric cashless payment system to minimise queues and enable parents to see their food choices each day.

Enhance your subscription with these add-ons (charged monthly):

- Pest control, through Rentokil.
- The preparation and cleaning of the dining room.
- The transportation of meals to schools with no cooking facilities.

## BUY AS YOU NEED SERVICES

Our service can be tailored to meet your individual needs, [contact us](#) if you would like to discuss arranging a tailored package for your school. We also offer a range of buy as you need services including:

- Advisory service for schools providing their own catering services
- Food related advice, training and guidance
- Catering consultancy for short term planning, or premises alterations

### Get in touch:

For more information visit the WES website and [educaterers.co.uk](http://educaterers.co.uk)

To discuss buy as you need services, or a tailored package call us on 01926 743434, or email [contactus@educaterers.co.uk](mailto:contactus@educaterers.co.uk)

**Educaterers – the 2019 LACA Catering Business of the Year**



# WES CORPORATE FACILITIES SERVICE

We help you to raise cleaning standards and ensure compliance with Health and Safety legislation.

## BENEFITS

Our service:

- Provides tools to enable you to raise cleaning standards in your school.
- Ensures a safe and clean environment for pupils, staff and visitors
- Gives you peace of mind that your staff are suitably trained and health and safety compliant

## OUR SPECIALISMS

- Staff training
- Health & Safety legislation and regulations

### WHY USE US

A clean school environment helps ensure pupils have a positive learning experience.

Our packages ensure you are compliant with Health and Safety legislation and assist you in raising cleaning standards and maximising the value you provide to pupils, parents and the wider community.

## SUBSCRIPTIONS

**Training Package** – provides training for cleaning and caretaking staff to carry out their duties safely.

**Water Temperature Testing Package** – ensures all water in your school is safe by monitoring the temperature in line with Legionella L8 Regulations.

**Inspection Package** – provides monthly cleaning inspections with a report.

**Compliance Package** – provides fire alarm and emergency lighting tests as per schedule and legislation.

**Responded to 98%  
of queries in 5 days.**

## BUY AS YOU NEED SERVICES

Contact us directly if you would like to discuss a tailored package for your school.

We also offer a range of buy as you need services to support your school including:

- Relief Staffing Service
- Moving, lifting and working at height training
- Janitorial service
- Specialist and event cleaning
- Equipment leasing
- Machinery repair service

### Get in touch:

For more information please visit the WES website. To access buy as you need services or discuss a tailored package, please contact us on 01926 413451



# WES PROPERTY MAINTENANCE SERVICES

We resolve day-to-day maintenance issues and ensure emergency, or unplanned repair works don't escalate and affect teaching.

## BENEFITS

Our service:

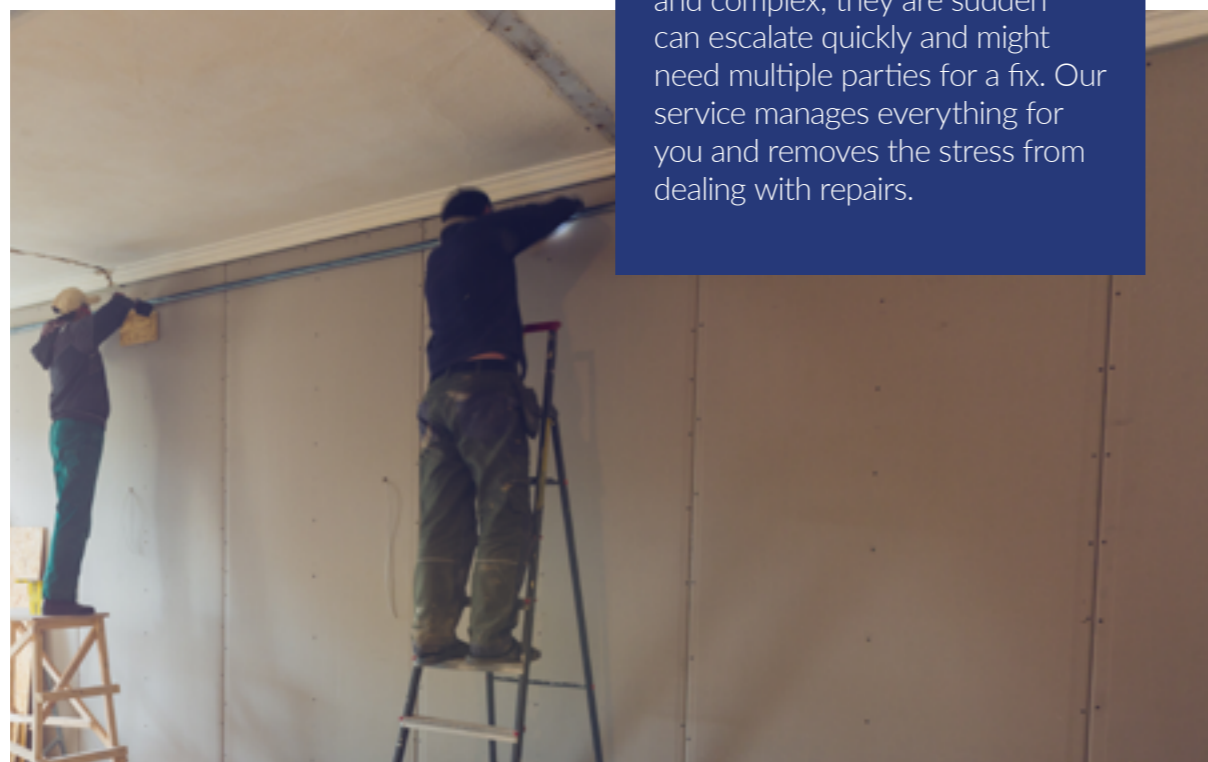
- Minimises the impact of unplanned maintenance on education
- Saves money on repairs and adaptations
- Saves time procuring, securing and managing contractors
- Guarantees a contractor will be on site when needed
- Allocates a named building, mechanical and electrical surveyor to your school

## OUR SPECIALISMS

- Property maintenance
- Emergency response
- Mechanical engineering
- Electrical engineering
- Refurbishment/extensions
- Major capital works

## WHY USE US

Reactive maintenance works in schools are often time consuming and complex; they are sudden and can escalate quickly and might need multiple parties for a fix. Our service manages everything for you and removes the stress from dealing with repairs.



## SUBSCRIPTIONS

For Warwickshire maintained schools our **Property Indemnity Scheme** gives you coverage for a wide variety of reactive property maintenance. The scheme includes:

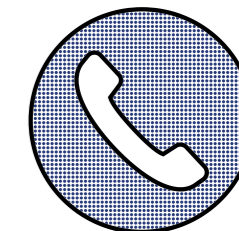
- One point of access for all your property repairs through the Property Hotline
- Emergency work and reactive repairs
- Guaranteed availability of contractors
- Named technical experts for your school to provide consistency
- Engineering equipment servicing to meet your statutory maintenance obligations

## BUY AS YOU NEED SERVICES

We offer a range of buy as you need services

For schools not buying the Property Indemnity Scheme, our Reactive Property Maintenance Service provides access to all property support charged on a job by job basis. Choose between the basic and enhanced level with the enhanced level including surveyor support. We can also procure and manage Engineering Equipment Servicing.

Consultancy support for Adaptations, Refurbishments and Minor Improvements and Major Projects is available to all schools. A service from inception of a project through to completion – you can choose to purchase the whole service or individual elements to meet your needs.



### Get in touch:

For more information visit the WES website or contact us on 01926 736385.

**100% of reactive calls,  
preventing teaching or learning,  
attended to within 24hours.**

# WES PROPERTY RISK MANAGEMENT SERVICE

Comprehensive property survey information and support tailored to the needs of Duty Holders in schools.

## BENEFITS

- Pragmatic advice from professionals with working knowledge of your school
- Save academies time and money with ongoing advice support and training
- Manage legislative risk and meet statutory asbestos and fire management obligations
- Ensure school water systems will be safe from Legionella

## SUBSCRIPTIONS

### For academies only:

**Asbestos Management** – meet your statutory obligations defined by Regulation 4 of the Control of Asbestos Regulations 2012. Includes annual asbestos inspection with prioritised report outlining required works and updates to your asbestos register/management plan.

**Water Hygiene Risk Assessment** – assessment survey every two years, or following major works, carried out by a Legionella Control Association-accredited and experienced assessor. Includes risk assessments, log books and drawings.

**Condition Survey** – carried out every three years and covers building, electrical and mechanical elements of your academy. Helps day to day maintenance planning and bidding for capital funds.

### For all schools:

**Fire Risk Assessment** – assessment every three years with a summary report with annotated floor plans.

## WHY USE US

Improve your success in bids for capital funds. We prioritise essential works in your medium and long term planning cycles to give you a strategic approach that means you're ready to bid for capital funds as they become available. We also help manage your health, safety and welfare obligations in an easy-to-understand, sensible way.

## BUY AS YOU NEED SERVICES

Please contact us if you would like to discuss arranging a package tailored to your school.

We also offer a range of buy as you need services including:

- Classroom-based asbestos and water hygiene awareness sessions
- UKATA-certified asbestos awareness training
- Fire Warden training
- Responsible Person training for asbestos, fire and water hygiene

### Get in touch:

For more information please visit the WES website or contact us on 01926 476850. To purchase buy as you need services, or discuss tailored service, call 01926 476850.

All subscribers have access to help and advice via telephone on 01926 476850 during the hours of:

**8.45am–5.00pm**  
**Monday to Thursday**

**8.45am–4.00pm**  
**on Fridays**

Access to reports and e-learning on the Atlas Website is also included.



# WES SAFETY & PREMISES SERVICE

School-focused sensible advice and support to make it easier for you to provide a safe and secure learning environment for staff, pupils and visitors.



## Get in touch:

To access our buy as you need services or to discuss a tailored package, please contact us on 01926 412440.

## BENEFITS

- Experienced staff who provide support through the telephone helpline and emails
- Competent, up-to-date advice that meets the Management of Health & Safety at Work Regulations 1999
- Reduced risk of accidents, serious incidents and insurance costs
- Cost-effective recommendations to meet budgets and comply with legislation
- Training packages, to enable staff to be aware of their duties and responsibilities

## OUR SPECIALISMS

- The Education Sector
- Health & Safety
- Fire Safety
- Security
- Swimming Pool Safety
- Radiation Protection

## BUY AS YOU NEED SERVICES

We offer a range of services to buy as you need. These include:

- Traffic management survey
- On-site fire warden training
- Follow-up support visits provided after the annual inspection
- Review and organisation of health and safety information
- Caretaker guidance visit
- Preparation for wcc corporate h&s audit (maintained schools only)
- Assistance site visits
- Training for staff and governors
- Niche services: microbiological analysis of pool water, accident recording, cash collection scheme and more.

**95% of our training is rated as good or excellent.**

## WHY USE US

We understand the complexity of health and safety law and how time consuming it can be to ensure compliance. Our 20 years of experience in the education sector means we can help you to raise health and safety standards.

## SUBSCRIPTIONS

Our 'Essential Core Service' is the foundation of our offer and needs to be purchased to access other elements of service. Other services are available separately to build on the core service and meet your school's individual needs.

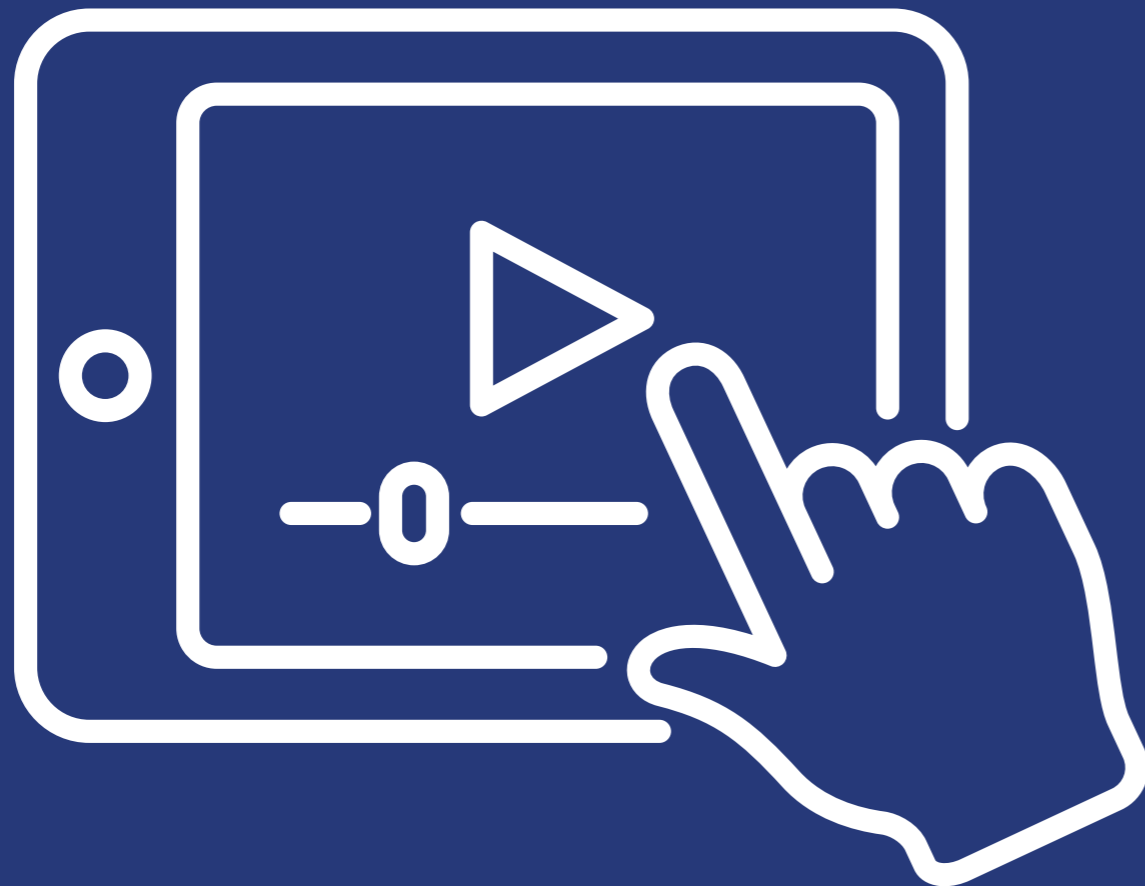
**Essential Core Service** – get immediate advice and guidance via our helpline with access to an experienced advisor on all aspects of Health and Safety, Fire Safety, and Security. Customers have access to our online document library and our termly newsletter. Primary schools also get annual membership to Consortium of Local Education Authorities for the Provision of School Science (CLEAPSS) for science, technology, and art advice and resources.

**Annual Inspections** \* – meet Health and Safety, Fire Safety, or Security legislative requirements and best practice. A Competent Health and Safety Advisor will conduct a walkabout, check documentation and procedures, and produce a plan that identifies areas for improvement. We recommend one inspection per year as part of a three year programme. Secondary schools get Radiation Protection Officer, Radiation Protection Advisor and CLEAPSS membership.

**Equipment/Pool Inspections** – ensure your equipment is safe and fit for purpose. Includes annual inspections of swimming pools, PE, sports, pottery, and design and technology equipment. Also includes termly inspections of outdoor play equipment.

\* All reports completed in 15 working days of our inspection.

# BOOK YOUR TRAINING THROUGH THE WES TRAINING PORTAL.



- Training courses all in one place
- Easily searchable by: name, date, service, or location
- All invoices available through your online WES account space



# WES FLEET MAINTENANCE SERVICE

We save you time and ensure your vehicles are maintained and safe to use.

## BENEFITS

- Know your vehicles are roadworthy, fit for purpose, properly licensed and maintained.
- Meet the statutory requirements of the Road Traffic Act.

## WHY USE US

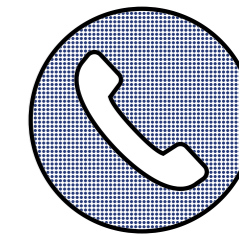
We provide comprehensive fleet maintenance and management facilities on a buy as you need basis at a competitive hourly rate.

**A major customer with 320+ vehicles saves over £100K per year by contracting their vehicle service and repair work to us.**

## BUY AS YOU NEED SERVICES

We offer a range of buy as you need services including:

- Servicing and repair of all makes of car, van and heavy commercial vehicle
- MOT testing and repair
- Tail lift inspections and repair
- Welding and related steel work
- Mobile repairs and vehicle recovery
- Vehicle specifications and procurement advice
- Vehicle inspections and condition reports



### Get in touch:

For more information or to purchase any of our buy as you need services, please contact us on 01926 413441.





# **NEED SOMETHING UNIQUE?**

**CALL US TO  
DISCUSS  
A SERVICE  
TAILORED TO  
YOUR SCHOOL.**

As well as our subscriptions,  
we offer completely tailored services  
for individual schools.

Contact us to find out how WES  
services can be tailored to your  
specific needs.

Call 01926 412210 or email  
[wesgeneral@warwickshire.gov.uk](mailto:wesgeneral@warwickshire.gov.uk)  
for more information.





For more information on our services visit:  
[warwickshire.gov.uk/wes](http://warwickshire.gov.uk/wes)

