

HOMES FOR WARWICKSHIRE CHILDREN IN CARE



**Sufficiency Strategy for Homes for
Children in Care 2025 - 2028**

Executive Summary

Warwickshire County Council (WCC) is committed to ensuring that every child in care receives the highest standard of support to help them thrive and reach their full potential – and that journey begins at home. WCC is dedicated to working in partnership with families to ensure they can access the right support at the right time, and in the right place. The Families First Pathfinder Programme¹ outlines how WCC will work proactively to help families stay together and flourish within their own communities.

However, it is recognised that for a small number of children and young people, home may not be a safe place. In these circumstances, the Council has a duty to provide care that not only protects but also nurtures. While in care, it is essential that children and young people are offered a safe, stable, and loving home environment – one that helps them feel valued and supported and equips them with the skills and confidence to build positive futures for themselves and contribute meaningfully to their communities.

This strategy sets out the vision and priorities for the next three years, and how this will be delivered for children and families across Warwickshire.



1. [Families First for Children – Child Friendly Warwickshire](#)

Introduction

Welcome to WCC's Sufficiency Strategy for Children in Care, 2025 to 2028 which aims to address the 'Sufficiency Duty' of the Local Authority – determined by Section 22G of the Children's Act 1989. This places a requirement on each local area to ensure sufficient accommodation for children in care.

What does WCC want to achieve by 2028?

Through continuous improvement plan by the end of 2028, Warwickshire will:

- Work together to increase the number of children returning home where it is safe to do so.
- Strengthen support to parents, families, care leavers and foster carers ensuring children can remain safely at home.
- Improve placement choice for children in care through developing the local market and making best use of internal provisions.
- Ensure all children in care live in good quality registered homes.
- Have in place a confirmed local Kinship offer for its Kinship carers. This offer will clearly set out support services available to Warwickshire Kinship carers and how to access them.
- Have developed processes to ensure the voices of children, young people and their families are heard.

Current Picture for WCC

There have been positive developments within Warwickshire across a range of support arrangements for children in care. WCC has seen substantial growth across the residential and supported accommodation sector since 2021, with a number of new providers entering the market in Warwickshire. This growth also includes the development of WCC's own Internal Residential Services.

WCC opened its first Ofsted Registered children's home in early 2023 and since then has opened four further homes, both under multi-home models. The current residential strategy approved in July 2020 has a plan in place to open one further home before the end of 2025. There is appetite to open additional internal residential services moving forward, the development of which will be guided by needs and data analysis.

WCC's foster care services have continued to provide a good quality local offer for children in care but continue to experience challenges around retention and recruitment of carers, as is felt nationally. The Independent Fostering Agency (IFA) footprint across WCC remains consistent with approximately third of WCC fostering needs being met by the IFA market.

(Please see the Appendix for full data on Warwickshire Children in Care).

Warwickshire is responding well to the rising number of children in care with multiple and complex support needs. However, as this group continues to grow, it is essential to ensure that both internal and external market provisions can fully support them. When needs are unmet, children end up in short-term high-cost arrangements, solo or unregulated placements, significantly impairing their chances of achieving good outcomes as the journey through the care system can be traumatic and complex for these young individuals. The current situation is financially unsustainable for the council, but with the increasing number of children needing accommodation, it is crucial to provide the necessary support and stability.

Overall numbers of children in care across Warwickshire;

- WCC accommodated 346 children during 23/24 with 319 children discharged from care. Based on historical trends, WCC could potentially see year on year increases of approximately 12 children being placed in care.
- Up to the end of March 2024, 269 children aged between 0 and 9 years old were in care and 536 children aged between 10 and 17 years old were in care, with 146 of this cohort being aged 17 years old.



Warwickshire
County Council
accommodated

346

children
during 23/24



Up to the end of March 2024

269

of children
aged between 0
and 9 years old
were in care



536

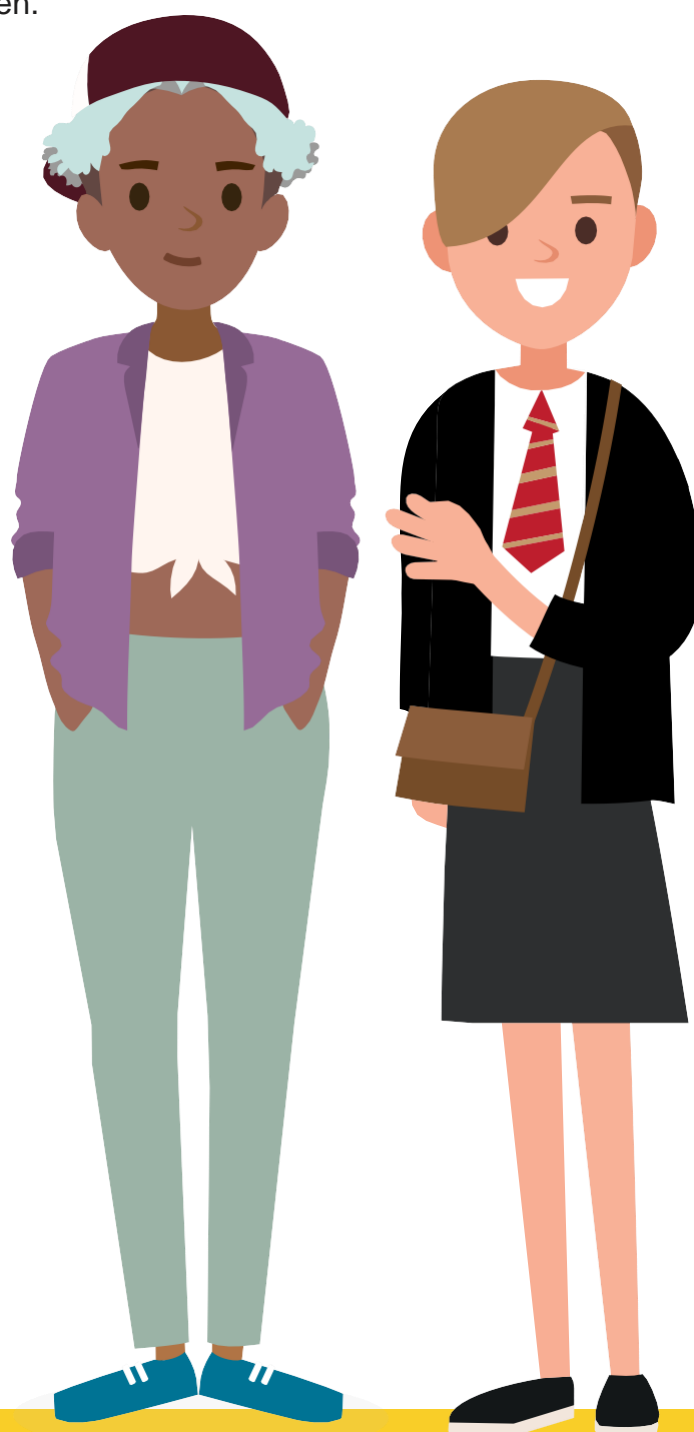
of children
aged between
10 and 17
years old
were in care



146

of this
cohort
were aged
17 years old

- Foster care placements continue to make up the highest proportion of care provisions for children in care, however internal and external foster care placements have continued to see a decrease since 2022 figures.
- Around two thirds of children in Independent Foster Agencies (IFAs) are placed out of county.
- Approximately 88% of children in residential homes live out of county.
- Approximately 63% of children in supported accommodation settings, including separated children, live out of county. This drops to 43% when excluding separated children.



Fostering

WCC is committed to providing children in care with family-based living environments. When children cannot remain at home with connected persons or other family members, the first option will be foster care.

WCC is successful in finding homes for a large proportion of children in care through its internal foster care service, resulting in children experiencing less disruption in other areas of their lives, such as education and family connections. To complement the internal supply and meet demand, WCC continues to commission from the provider market to meet some of its foster care needs. This position has remained unchanged for over 10 years.

The number of children being placed outside of county, however, remains consistently high, with approximately 70% of foster placements being outside of Warwickshire and an average of 30% of these placements being more than 20 miles from their home.

What is working well?

Placements: Since 2020 there have been consistently between 65% and 70% of children in care placed in foster arrangements with an average number of 298 children being placed within the financial year.

Provision: WCC is developing an internal offer and introducing different fostering schemes to better meet the evolving needs of children in care. This includes a flexible fostering offer, along with developing internal [Treehouse](#) and [Breathing Space](#) schemes, which align with a bespoke model of care and respite, as well as short-term emergency placements.

BRICS and STEPS²: The BRICS (Bail and Remand Intensive Care) service enables the Council's Youth Justice Service to offer criminal courts an intensive package of care & support as an alternative to custody for children. Without this service there would be no other option than for children to be remanded into custody where the crime meets this threshold.

2. STEPS stands for Short-Term Emergency Placements and BRICS, Bail and Remand Intensive Care placements. There are times when a child may need an immediate short-term foster home due to unforeseen circumstances. Providing emergency care at short notice means children can be placed in a safe environment sooner rather than later. STEPS supports children in this situation. These placements can last from a week to three or four months, but children usually stay around six to eight weeks.

The current STEPS (Short Term Emergency Placement Service) is a block contract that provides emergency placements for young people in care and requires a placement at short notice for up to 28 days. With occupancy levels at full capacity since its inception in August 2020. The service aims to improve placement stability and for some of our hardest to place children by providing them a short-term provision which prevents them moving between placements whilst a new placement is identified.

‘Youths like me, we live for today only, we don’t think about tomorrow or the next day, we live for today. [Foster carer’s name] has helped me live for today, next week, next month and the future.’

What can be improved?

- Across internal and IFA provisions WCC continues to experience challenges in identifying suitable foster homes for older children and experience more acute challenges where children have:
 - Higher level social and emotional support needs.
 - Higher level mental health needs, including self-harming behaviours.
 - Aggressive behaviour which may be linked to a medical/ neurological diagnosis and/or may also be symptomatic of their lived experience.
 - Dysregulated eating behaviours, and,
 - Physical disabilities including those which require elements of personal care.
- The number of children placed outside of Warwickshire continues to remain high.

“I was shipped off to Northampton and I knew no one and had to change schools.”

What actions need to be taken?

- Retention and support for foster carers when they need additional support. A contract with a provider of psychological interventions has been secured as well as the development of a Special Guardianship Order (SGO) Team to offer post SGO support including applications to the Adoption Support Fund.
- Review and confirm the approach regarding Regional Fostering Recruitment hubs.
- Increasing internal foster care placements by 10% by 2027, including introducing flexible fostering to enable children in care to access 38-week residential school and boarding school placements.
- Recommissioning of short-term emergency placement and bail and remand foster care service.
- Review of internal and market offer against the current and projected needs and demand levels to inform innovative and creative solutions to improve our foster care placement offer for children and families.
- Continue as key partners of the West Midlands Foster Care framework contract.






Residential

Locally, WCC has sufficient independent Ofsted-registered residential provisions across the county to meet the level of residential care it currently purchases. Unfortunately, not all provisions meet the diverse needs of the children in care and experience frequent matching issues. Furthermore, these provisions are not ringfenced to Warwickshire children with neighbouring authorities, and those further afield, placing within Warwickshire borders.

What is working well?

WCC Internal Children’s Homes - since 2020, WCC has invested, developed and now manages an internal children’s homes service. Currently, five homes are operational, supporting children with emotional and/or behavioural difficulties. There is £1.06m capital investment remaining to support development of home six. Upon completion, these homes will collectively provide up to 19 beds for Warwickshire’s children in care. All WCC homes are Ofsted registered ‘good.’ Two of the homes (below) operate under a multi-home model.

Single home - 1Reg. Manager		Multi home model – 1 x Reg. Manager		Multi home model – 1 x Reg. Manager	
Cherry Tree		Silver Birch	Beechwood	Oak Lodge	Acorn House
					
Stratford upon Avon 4 bed home 8-14 yrs Reunification Emotional Behaviour difficulties (EBD)		Nuneaton 4 bed home 13-18yrs Emotional Behaviour difficulties (EBD)	Nuneaton SOLO home Up to 18yrs Emotional Behaviour difficulties (EBD)	Leamington 4 bed home Up to 18yrs Emotional Behaviour difficulties (EBD)	Leamington 2 bed home Up to 18yrs Emotional Behaviour difficulties (EBD)

Residential Services for Children and Young People –WCC currently has a residential block contract provides four beds to children across four homes. WCC also has the option of spot purchasing additional beds in other homes nationally through the same provider. Based on occupancy levels and contract performance up to 31st March 2025, it is evident that the WCC block contract had secured significant savings and improved sufficiency and choice for children in care. Occupancy was at 100% between July 2024 and February 2025.

West Midlands Residential Care Framework (2025)

- where needs of young people cannot be met within the above options due to availability, complexity of need, matching or location issues, WCC purchases beds in homes via the West Midlands Residential Care Framework which covers 14 local authority areas.

The House Project Warwickshire – this project is set up to support young people leaving care into accommodation. Working very closely with the young people to identify the learning they need to move out of care and move into their new home. This home becomes a base to become independent and transition into adulthood.

“this is the best house I’ve been in...I get on with everyone...I can do more of my own thing.”

What can be improved?

- The number of children experiencing instability in residential homes has increased almost year on year, resulting in negative impacts on their outcomes, it is also evident that where children have multiple placement moves, the cost of their residential care increases over time; this position is unsustainable for WCC.
- Data indicates that children requiring residential care services are presenting more complex and higher-level support needs than in the previous 12 months³. When multiple or high-level care and support needs are present, the cost of services to address these needs is significantly higher than WCC's average residential cost.
- Across internal and external market provisions WCC continues to experience difficulty in finding homes for children aged 14yrs and older, this is magnified for children aged 16 and 17yrs.
- The council is required to make savings against its placement budget; proportionately residential care is the greatest expenditure of the councils' placement budget.

"Things keep changing."

3. *The 4 most common needs of children in these placements are due to mental ill health, emotional dysregulation, CAMHS involvement and self-harming behaviours which indicates that additional provision for assessment purposes and for supporting more complex needs is required.*



What actions needs to be taken?

- Further development of the internal children's homes offer, whilst ensuring they are occupied at the earliest opportunity, with recommendations being made to engage with systems partners with a view to developing services as follows;

Priorities 1 & 2: Develop internal homes to support teenagers including a 'same day, short stay' home

WCC continues to experience difficulty in finding homes for children aged 14yrs and older, this is magnified for children aged 16 and 17yrs.

81% (as of February 2025) of WCC's residential population were aged 14yrs or older. Some of these children could have their needs met within foster families, however; the children either do not wish to live in a foster family or WCC have been unable to locate a foster family to care for the child/young person, therefore they are placed in residential care.

A same day, short stay home, specifically targeted at 14yr+ children will enable WCC to complete assessment of need and primarily support return home with a planned package of support provided via WCC and universal services where appropriate. Where return home is not appropriate WCC would look to support planned move for children to the most appropriate service to meet their needs.

A second small (no more than 3 bed) residential home to support children aged 14 – 18yrs is recommended (in addition to home 6 under 2020-25 project plan).

Priority 3: Develop internal provision to support children with mental health needs including:

- **Self-harming behaviours**
 - **Suicidal ideation**
 - **Diagnosed mental health disorder**
-

WCC, like many other authorities experience significant challenges in finding the right homes for children who present with higher level support needs and either:

- do not meet Tier 4 mental health threshold
- have been and/or are waiting discharge from Tier 4 mental health provisions
- have been and/or are waiting for transition on from secure homes.

It is recommended this is developed in partnership with system partners to reduce pressure elsewhere in the system and ensure children receive the right support at the right time and go on to achieve good outcomes reducing the risk of experiencing further trauma and hospital admissions.

Priority 4: Develop internal provision which can support children with higher level support/complex needs and at risk of or are subject to Deprivation of Liberty (DoL). This would include children with presenting needs such as:

- missing
 - criminal exploitation
 - gang affiliation
 - child sexual exploitation (CSE)
-

WCC has seen an increase in the DoL orders. The children subject to a DoL often present with higher level and or complex support needs.

Often WCC can experience challenges in finding the right home for these children, often residential providers are unable to offer homes due to either being unable to meet the requirements of the DOL and/or unable to meet the needs of the child.

Smaller, flexible homes are recommended to support this cohort which can be adapted based on change in need and/or levels of dysregulation in the home.

- Expansion of the local block contract to increase occupancy and consider flexible block arrangements to further address gaps in provision.
- Continuation as key partners of the West Midlands Regional Residential Contracting Arrangements.
- Improving the offer to children with special educational needs and disabilities through developing dedicated internal Ofsted registered residential home(s) and working with local market Ofsted (and dual) registered providers.
- Exploring alternative provisions to traditional residential homes, including the use of residential schools and boarding schools where children can also be supported alongside the flexible fostering offer.

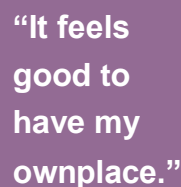
Supported Accommodation and Supported Lodgings

WCC has a duty to provide accommodation-based support for Warwickshire care leavers and separated children aged 16 and above. WCC has a range of these accommodation options available, some of which are provided internally and some externally commissioned through block contracts, framework and spot arrangements. The primary outcome of the provision of supported accommodation is that young people are safeguarded in appropriate accommodation and supported to develop their potential and an appropriate degree of life skills and to then move on to independent living.

Supported accommodation usage has seen considerable increases over the last five years as can be seen by the increasing numbers placed in supported accommodation at year end. The activity over the last year shows that many children in care continue to be placed in supported accommodation. The growth in the use of supported accommodation is linked to the growth of the separated children population, especially as children who move to Warwickshire via the National Transfer Scheme (NTS) continue to need to be accommodated.

What is working well?

- WCC sufficiency of supported accommodation placements for children other than separated children has improved year on year.
- The provision for separated children locally has also improved significantly over the last 18 months, with 50% of separated children now living in Warwickshire.



"It feels good to have my ownplace."

What can be improved?

- WCC continues to experience challenges in identifying suitable homes for the separated children population in Warwickshire; instead, these young people are placed out of the county, often in Birmingham and Coventry.

“I was very lonely at first.”

What actions will be taken?

- To review current arrangements for supported lodgings and develop an options appraisal to recommission a service delivery model to complement internal provision and replace the current contract on expiry in August 2026.
- To continue as key partners of the West Midlands Supported Accommodation Framework contract.
- To explore options for emergency ‘crash’ beds.
- To review current arrangements for independent life skills training to inform future arrangements alongside working with the provider market to support providers in delivering the right support to care experienced young people through active delivery models.



Short Breaks and Overnight Respite Provision

Children's Short Breaks and Overnight Respite Services are a statutory requirement for eligible children and young people with disabilities and other children and young people in need (Children with Disabilities / Children in Need), to give parents and carers a meaningful break from caring responsibilities and to provide opportunities for children to have fun, to try new things and to socialise.

Warwickshire County Council (WCC) offers a broad and evolving range of short break opportunities for children and young people with disabilities. These include daytime, evening, overnight, and weekend support delivered in the home, in residential settings, or within the community.

In April 2025, WCC launched a newly commissioned service model designed to improve access, equity, and choice across the county. This model includes six distinct types of provision:

- **Community Groups and Clubs** – Centre-based activities during evenings, weekends, and school holidays.
- **Supported Exploring in the Community** – 1:1 or group support for children to access public and community spaces.
- **Day Support at Home** – Flexible care and enrichment activities delivered in the home.
- **Night Support at Home** – Overnight care in the family home to support routines and personal care.
- **Home from Home Beds** – Familiar, centre-based overnight stays for children with complex needs.
- **Activity Breaks and Holidays** – Supported overnight stays in new environments

during weekends and holidays.

This refreshed offer also includes a wraparound family care model, providing personalised, flexible support in the home and community, with a focus on early intervention and crisis prevention. A brokerage function within the Children's Placement Hub ensures that services are matched to children's needs, location, and eligibility.

What is working well?

- Around **140 children and young people** in Warwickshire currently access short breaks, including daytime and overnight support.
- Approximately **100 children** receive overnight provision through residential settings, Family Link placements, or Direct Payments.
- The new model has attracted **9 providers**, including **4 new organisations**, expanding the market and increasing choice for families.
- The new model has also seen an **increase in the number of providers** who are able to offer CQC registered day care and night care in the home.
- A new short breaks brokerage function has given providers a single point of contact and **reduced time spent on referral activity**.

Areas for Development

- There remain **gaps in provision** in parts of West and South Warwickshire.
- **Overnight short breaks capacity** has been impacted by changes in the provider model, creating pressure on availability.
- **Data** for children receiving short breaks is not consistent and understanding the needs of children and young people needs to be better understood.
- Children with **complex physical health needs** or behaviours that challenge services face longer waits and limited options, especially for groups and clubs.
- Families needing support to **extend working hours** during school holidays or after school may struggle to access suitable provision locally.

Next Steps

- **Recommissioning activity** will continue to build capacity in the existing model and improve choice and access to both planned and emergency short breaks.
- Strengthen and implement approaches to **ensure children with disabilities are supported effectively and efficiently** through better understanding needs and demand.
- WCC will **strengthen partnerships** with health and care providers to ensure a joined up approach.
- A focus on **early support and family help** will ensure more children receive timely, preventative support.
- The Council will **explore alternative models** for children requiring solo or specialist placements.
- Collection of **more robust referral activity data** which will help inform future short breaks commissioning requirements.

What are the next steps?

WCC is committed to ensuring that children in care receive the best possible experiences and will do this by;

Service	Aim	Objective
Foster Care Provision	<ul style="list-style-type: none"> Improve sufficiency of foster care provision within 	Retention and support for foster carers when they need additional support. A contract with a provider of psychological interventions has been secured as well as the development of a Special Guardianship Order (SGO) Team to offer post SGO support including applications to the Adoption Support Fund.
	Warwickshire to reduce the number of children being placed in residential care.	Review and confirm the approach regarding Regional Fostering Recruitment hubs. Increasing internal foster care placements by 10% by 2027, including introducing flexible fostering to enable children in care to access 38wk residential school and boarding school placements.
	<ul style="list-style-type: none"> Increase foster care 	Recommissioning of short-term emergency placement and bail and remand foster care service.
	provision that can support children with complex needs.	Review of internal and market offer against the current and projected needs and demand levels to inform innovative and creative solutions to improve our foster care placement offer for children and families.
		Continue as key partners of the West Midlands Foster Care framework contract.
Children's residential homes	<ul style="list-style-type: none"> Increase the sufficiency of bed availability within Warwickshire – or 20 miles. 	Further development of the internal children's homes offer, whilst ensuring they are occupied at the earliest opportunity, with recommendations being made to engage with systems partners with a view to developing services; <ul style="list-style-type: none"> which meet the needs of children with mental health challenges, for children with complex needs, including those that are subject to DoL, that offer a 'same day, short stay' home for children, and for children with low-medium level social, emotional and mental health needs.
	<ul style="list-style-type: none"> Increase the availability of provision for those children with the greatest need. 	Expansion of the block contract offer to increase occupancy and consider flexible block arrangements to further address gaps in provision.
	<ul style="list-style-type: none"> Reduce the number of unregulated placements. 	Continuation as key partners of the West Midlands Regional Residential Care Framework contract
		Improving the offer to children with special educational needs and disabilities through developing dedicated internal Ofsted registered residential home/s and working with local market Ofsted (and dual) registered providers.
		Exploring alternative provisions to traditional residential homes, including the use of residential schools and boarding schools where children can also be supported alongside the flexible fostering offer.

Service	Aim	Objective
Supported Accommodation & Supported Lodgings	<ul style="list-style-type: none"> Continue to increase the numbers of young people living in Warwickshire. Increase the availability of provision for separated children in Warwickshire. 	Review current arrangements for supported lodgings and develop an options appraisal to recommission a service delivery model to complement internal provision and replace the current contract on expiry in August 2026.
		To continue as key partners of the West Midlands Supported Accommodation Framework contract.
		To explore options for emergency 'crash' beds.
		Review current arrangements for independent life skills training to inform future arrangements alongside working with the provider market to support providers in delivering the right support to care experienced young people through active delivery models.
Respite and Short Breaks	<ul style="list-style-type: none"> Increase the availability of short breaks provision throughout Warwickshire. Ensure provision has the flexibility that is required by Warwickshire parents 	Develop and build capacity within the market to improve choice and availability of planned and unplanned community and overnight short breaks through recommissioning activity
		Support the development of stronger relationships between WCC, health system partners and providers.
		Strengthen and implement approaches to ensure children with disabilities are supported effectively and efficiently through better understanding needs and demand.
		Continue to embed and increase the number of children who receive support earlier from early support or family help



Closing Summary

WCC is committed to collaborating with children, young people, and families to design and develop appropriate support, ensuring it is available at the right place and time.

WCC will form a sufficiency working group to oversee the highlighted intentions, actions and priorities. This group will develop innovative concepts to fulfil our sufficiency duties in response to emerging needs, trends and legislation. The sufficiency action plan will be reviewed annually. Sufficiency encompasses various areas within children's services, making it crucial for partners, carers, children, young people and providers to be invested in the actions. Therefore, partnership, collaboration and market engagement will remain essential.

Appendix

Figure 1: Warwickshire 0-17 Population Projections:

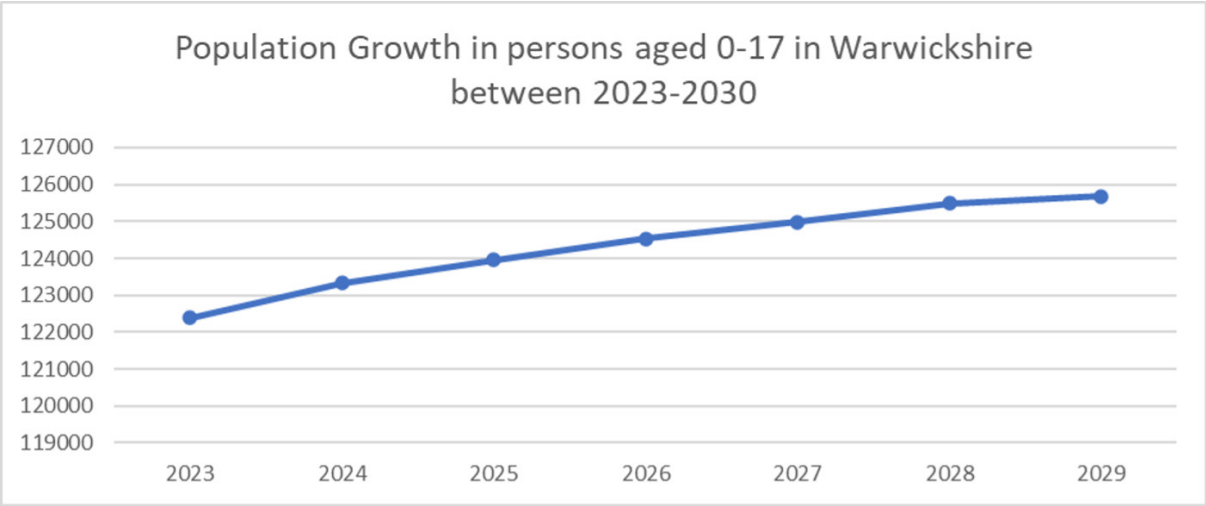


Figure 2: Number of children starting and ending to be in care as at year end – 5yrs.

Financial Year	Children starting to be looked after	Children discharged fromcare
2019/20	315	283
2020/21	364	258
2021/22	325	364
2022/23	276	319
2023/4	346	319
Averages (based on last ffive years)	325	309

Figure 3: Overall numbers of children in care at year end

	31/03/20	31/03/21	31/03/22	31/03/23	31/03/24
Totalchildren in care during ffinancial year	1015	1109	1163	1078	1102
Warwickshire CIC (including separated children)at 31 March	754	860	822	778	805
Warwickshire CIC (excluding separated children)at 31 March	681	776	728	679	690

Figure 4: Rate of children in care (including unaccompanied asylum-seeking children) per 10,000 of the 0-17 population

	31/03/20	31/03/21	31/03/22	31/03/23	31/03/24
Warwickshire	64.1	73.1	69.0	63.5	64.3
Statistical Neighbours	60.1	61.0	62.0	66.0	65.0
West Midlands	82.0	85.0	88.0	90.0	90.0
England	67.0	67.0	70.0	71.0	70.0

Data Caveat: The 31 March 2024 rate per 10,000 is calculated using the recently published projected 0-17 population by the Office for National Statistics. This publication has projected a population growth in Warwickshire's 0-17 population from 122,503 to 125,285.

Figure 5: Rate of children in care (excluding unaccompanied asylum-seeking children) per 10,000 of the 0-17 population

	31/03/20	31/03/21	31/03/22	31/03/23	31/03/24
Warwickshire	57.8	65.9	61.1	55.4	55.1
Statistical Neighbours	52.6	54.2	54.3	54.7	54.1
West Midlands	79.1	82.3	84.5	85.3	TBC
England	63.7	65.1	65.1	64.4	63.5

Data Caveat: The above is not published by the DfE so is based on our own calculations based on deducting the published the separated children number from the published overall number of CIC

Figure 6: Age breakdown of Children in care at year end (grouped)

Age Group	31/03/20	31/03/21	31/03/22	31/03/23	31/03/24	% Increase/Decrease (based on change between 31/03/23 and 31/03/24)
Under 1	42	33	36	23	28	+21.7%
1 – 4 years	119	145	124	105	106	+1.0%
5 – 9 years	130	161	133	134	135	+0.7%
10 – 15 years	263	313	297	274	299	+9.1%
16 – 17 years	200	208	232	242	237	-2.1%
Total Children in Care	754	860	822	778	805	+3.5%

Figure 7: Placement activity bytype at year end

Placement Type	31/03/20	31/03/21	31/03/22	31/03/23	31/03/24	Change (based on increase between 31/03/23 and 31/03/24)
Foster placement with friend or family (WCC)	104	132	121	134	130	Decrease of 4
Foster placement with LAcarer (WCC)	251	221	222	189	196	Increase of 7
Foster placement with Agency/OLA carer	180	222	214	179	189	Increase of 10
Independent Living/Supported Accommodation	82	82	83	95	51	Decrease of 44
Unregulated Supported Accommodation	0	0	0	0	0	No change
Mother and Baby Unit	4	8	1	0	1	Increase of 1
Placed for adoption	22	24	10	21	22	Increase of 1
Placed with own parents	53	80	75	63	70	Increase of 7
Prison/Police Custody	1	4	1	0	1	Increase of 1
Residential Home/School	46	81	84	79	81	Increase of 2
Secure Unit	3	0	1	1	3	Increase of 2
NHS/Health Trust or other establishment providing medical/nursing care	5	3	2	1	1	No Change
Other Placement e.g. Temporary/Unregistered	3	3	8	16	15	Decrease of 1
WARWICKSHIRE TOTAL	754	860	822	778	805	Increase of 27

Figure 8: Children in care living out of county (20 miles or more)

	2019/20	2020/21	2021/22	2022/23	2023/24
Warwickshire	19.8%	22.4%	22.3%	23.3%	18.9%
Statistical Neighbours	17%	18%	17%	18%	19%
West Midlands	14%	14%	15%	16%	16%
England	16%	16%	16%	17%	17%

Figure 9: Long term placement stability

	2019/20	2020/21	2021/22	2022/23	2023/24
Warwickshire	64.0%	62.6%	66.4%	57%	57%
Statistical Neighbours	66%	72%	71%	69%	68%
West Midlands	69%	71%	71%	69%	68%
England	68%	70%	71%	69%	68%

Figure 10: Short term placement stability

	2019/20	2020/21	2021/22	2022/23	2023/24
Warwickshire	14.7%	15.7%	14.0%	14.3%	13.7%
Statistical Neighbours	11%	9%	9%	11%	11%
West Midlands	10%	8%	9%	10%	10%
England	11%	9%	10%	10%	10%

Figure 11: Short term stability of placements by age group

Age Group	31/03/20	31/03/21	31/03/22	31/03/23	31/03/24
Under 1	6 (0.8%)	6 (0.7%)	2 (0.2%)	4 (0.5%)	4 (0.5%)
0 – 4 years	20 (2.7%)	30 (3.5%)	22 (2.7%)	17 (2.2%)	17 (2.1%)
5 - 9 years	15 (2.0%)	11 (1.3%)	11 (1.3%)	12 (1.5%)	17 (2.1%)
10 – 15 years	40 (5.3%)	51 (5.9%)	43 (5.2%)	40 (5.1%)	42 (5.2%)
16 – 17 years	30 (4.0%)	37 (4.3%)	37 (4.5%)	38 (4.9%)	30 (3.7%)
Total children at year end with three placements or more in the last 12 months	111 (14.7%)	135 (15.7%)	115 (14.0%)	111 (14.3%)	110 (13.7%)