

Where and when will I see my Pathways worker?

This is up to you. Maybe you'd like to see them in school, or at home, or somewhere else. It's up to you to discuss this and decide where and when is best with your worker.

Do I have to work with Pathways?

No, it's voluntary which means no one can make you do it if you don't want to. Even if you think you don't want to, please meet with a Pathways worker first to talk about it. They will be able to give you more information and can answer any questions you have which might affect the choice you make.

What happens next?

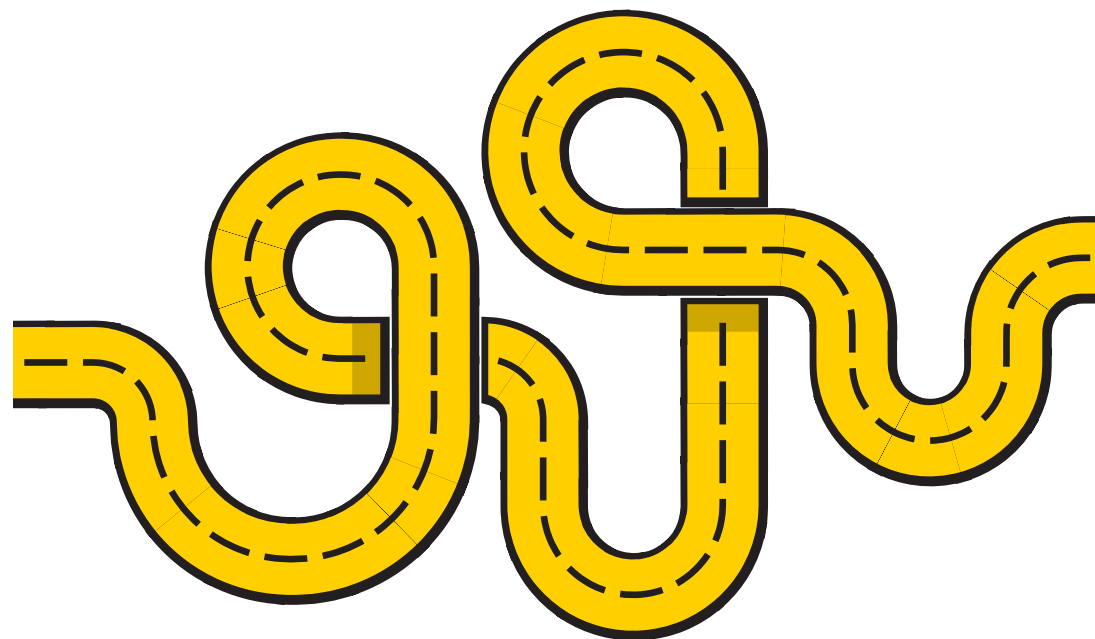
If you think Pathways might be the right 'path' for you, then please speak to whoever gave you this leaflet. The Pathways team will be in touch once a referral is made.

Any other questions?

If you have any questions just email pathways@warwickshire.gov.uk or call 01926 682650

Pathways

A guide for children and young people



Why have I been given this leaflet?

You have been given this as someone who knows you thinks it could be helpful for you to work with Pathways. This might be because they are worried that you could get in trouble with the police.

What is Pathways?

Pathways is a team within Warwickshire Youth Justice Service, part of the Children and Families service in Warwickshire County Council.

The Pathways team includes youth justice practitioners, youth workers and intervention specialists.

What do Pathways do?

Pathways works with children and young people, providing help and support to prevent them from coming into contact with the criminal justice system. This means we want to stop people from becoming involved with the police and courts because they have committed a crime.

How do we do this?

Once a referral is made to the Pathways team and it's agreed that Pathways might be useful, a worker from the Pathways team will be allocated.

Your allocated worker will come to meet with you and your family to talk about what has happened and will talk to you about things which might be helpful for you. Your Pathways worker will also contact anyone else who is working with you, including your school, health services and social worker or family support worker, if you have one.

This will be written up into an assessment and with your worker, you will then create a plan of what you will work on together.

What could be in my plan?

This is up to you! The plan you make with your Pathways worker will look at addressing any worries or concerns for you and will work towards having more positive things going on in your life.

Your plan could include learning more about a certain topic, such as knife crime, keeping yourself safe or healthy relationships, as well as finding things you enjoy and want to get involved with, like a sport or hobby, or maybe a job or a college course.

Who will be involved?

The Youth Justice Service is a multi-disciplinary team which means that lots of different types of people can work with us to support you. This includes people who specialise in mental health, substance misuse, education, speech and language therapy and parenting support. Depending on what is happening for you and your family, we will try to get the right support in place as soon as possible. We will also keep in contact with your parent/ carer as well along the way.

