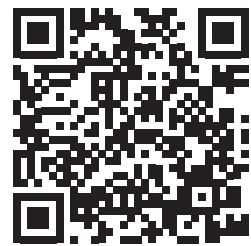


Lifelong Links



What is Lifelong links?

Lifelong Links is a service to help find and bring together people who care about you. This can be people you know well, people you have not seen for a while (like a former teacher or carer) and even relatives who you have not yet met.



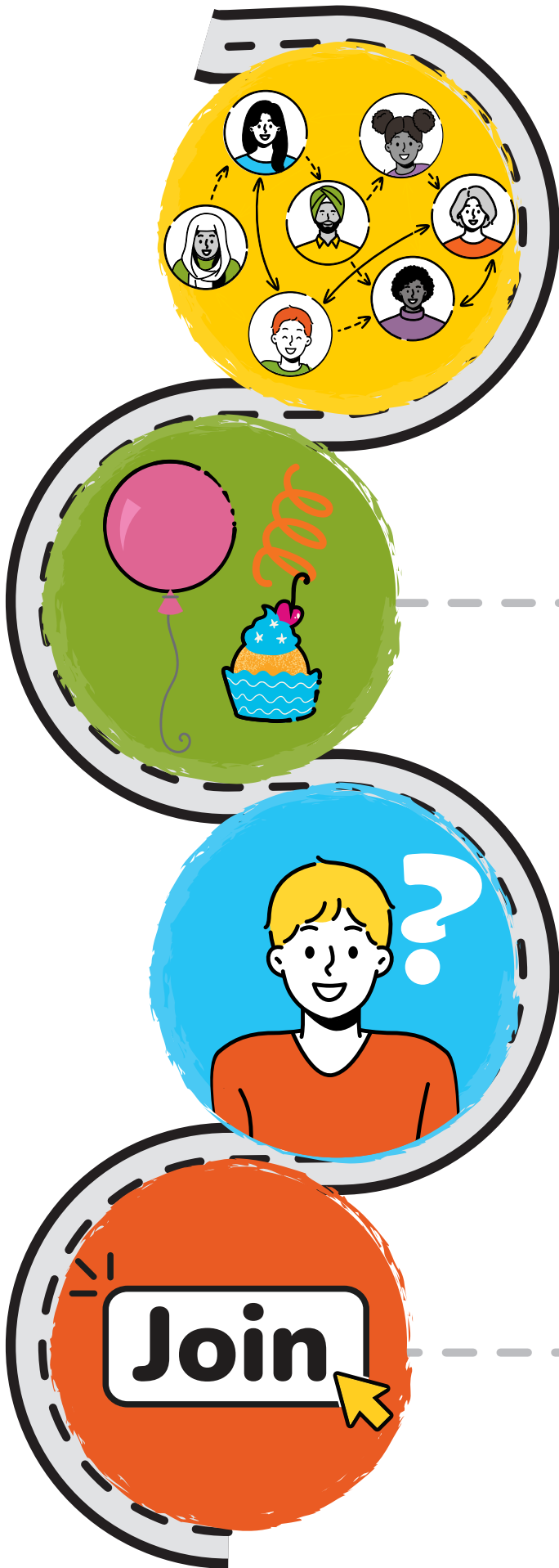
scan to find
out more



Name of my coordinator:

email: lifelonglinks@warwickshire.gov.uk





How does it work?

You will be given your own Lifelong Links coordinator. They will talk to you about the people that are important to you and see if they can find them. If they do, they will contact them if it is safe to do so.

What happens next?

Your coordinator will discuss with you and your social worker about inviting people to a Lifelong Links Family Network Meeting, a special event for you. At the meeting, a plan will be made for how they can help you now and as you grow up.

Do I have to do this?

No, you get to decide. Even if you say yes and then change your mind, that's okay. Just tell your Lifelong Links coordinator or social worker.

How can I get involved?

Just talk to your social worker, carer or independent reviewing officer and ask them to contact Lifelong Links.