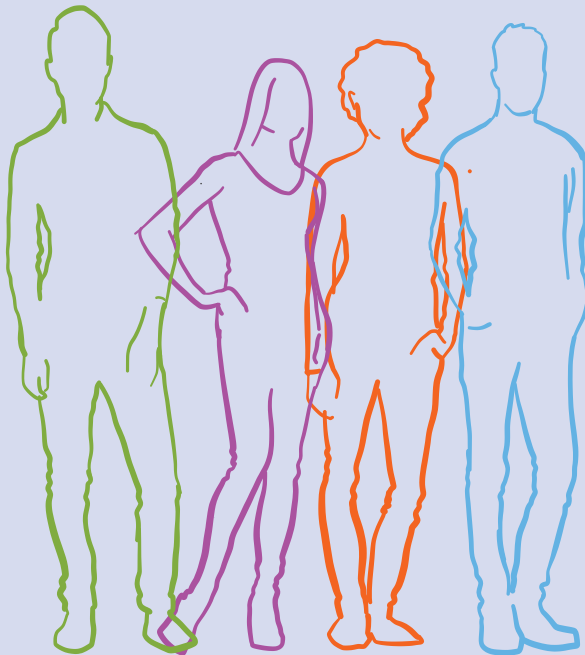


# What are you entitled to?

## A guide for Care Leavers

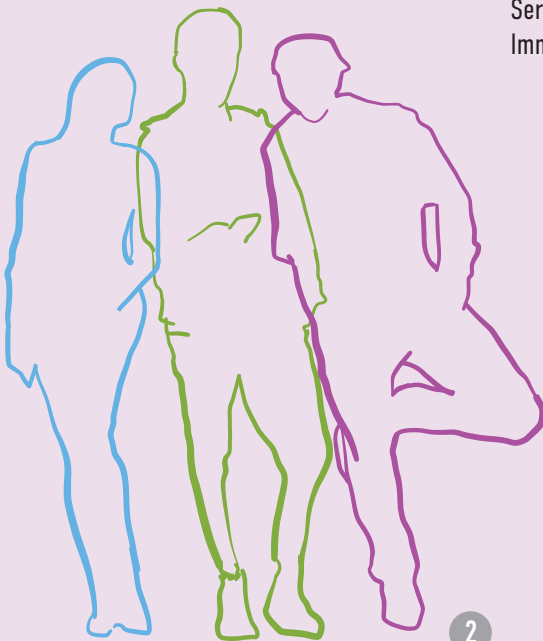


Warwickshire  
County Council

# Introduction

Young people from Warwickshire have helped design this booklet which provides an explanation of support available to Care Leavers in Warwickshire.

This booklet tells you about the practical and financial support available to you as a Care Leaver. We recognise that moving from care to living independently is a big change for all young people. We want to make sure that you feel supported through this process.



You are entitled to services described in this booklet if you live in or outside of Warwickshire County Council

To qualify for the support in this booklet you must have been in care for...

at least 13 weeks between the ages 14 and 16 (including your 16th birthday)

or

for 13 weeks after your 16th birthday

At the back of this booklet we have some “Useful Contacts” for you to look through and a “Jargon Buster” to explain the meaning of certain words used in the booklet

Services within this booklet are subject to Immigration Status

Key to the symbols found later in this guide:

-  Advice/support available
-  Money help
-  Learning, support groups and events
-  Health and wellbeing
-  Contact/social media



[twitter.com/WeCare\\_Warks](https://twitter.com/WeCare_Warks)

# Support from Personal Advisors

The job of a Personal Advisor is to offer you guidance and support on independent living skills, education, finance, housing, health and wellbeing.

**You will have an allocated Personal Advisor up to the age of 21.**



If your care leaving involvement stopped after your 21st birthday you can approach Warwickshire and ask for guidance and support before you are 25.



Your Personal Advisor or social worker is responsible for making sure your Pathway Plan is written with you and kept up to date and on track.



Your Personal Advisor will support you in getting your birth certificate, national insurance number, provisional driving licence and passport. If you do not already have these.



Your Personal Advisor will help you open a bank account if you do not have one already.



Your Personal Advisor will discuss and plan with you how to manage your Junior ISA and savings accounts, if you have them.

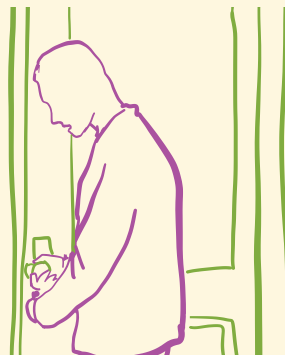


Should you wish to view your personal files/records your Personal Advisor will help you. We will offer you the opportunity to read your files/records with support from your worker. We will offer counselling support before and after you read your file/records. If you are seeking asylum your PA will support you to communicate with key people and organisations, i.e. a solicitor, the home office, etc



If you do not have a bank account or cannot have one we will use a PCFS card which we can put money on to use like a cash card.

# Accommodation & Housing



There is a separate Accommodation Guide that provides more details on your accommodation options please ask your Personal Advisor or Social Worker for a copy



**Supported Accommodation** can be an option from the age of 16 if you do not feel ready to live independently.



**Supported Lodgings** is funded for young people from 16 to 18 years. If this option is extended to 21 a contribution will be made. The lodgings can be provided by a person that you know or one provided by the Care Leaving Service. Both options have to be checked out by your Personal Advisor or social worker.



**Shared Accommodation** can be an option from the age of 16 .



**'Staying Put'** allows you to stay in a stable fostering placement up to the age of 21.

If you are a young person seeking asylum your worker will discuss your accommodation options with you.

After exploring all the accommodation options above, and if you are over 18 and decide that they may not be suitable, we can then support you to get your own tenancy either with a Local Authority Housing Association or provide guidance on private tenancies.



If you choose a Local Authority Housing Association then your Personal Advisor will make sure that you get “priority nomination banding” when you apply for a tenancy.



You can apply to be a part of the Warwickshire House Project. Ask your Personal Advisor for details.



Parent and Child Unit can be an option depending on your situation and if you feel the need for more one to one support.



Warwickshire Leaving Care Team has a list - created by young people - for essential items (Home Furnishing Grant). Your Personal Advisor will help purchase these items with you when you start up your new home. Speak to your Personal Advisor to see this list.

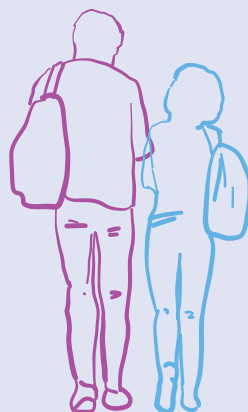


We will support you when you are moving to a new house. If you have not already been given a suitcase for your clothes, we will purchase a suitcase for you

### **You will be offered recognised Independence Training and Workshops.**

- You will be given help to understand how to avoid becoming ‘intentionally homeless’ if you are over 18.
- If you are 16-18 and need accommodation in an emergency a ‘Crash Pad’ could be made available to you
- We will reimburse your council tax payment for 3 years between the ages of 18-25 years. This is also the case for young people who live outside of Warwickshire County.
- We will provide a winter fuel payment of £100 payable in November each year to eligible care leavers between the ages of 18-25 who are living independently.
- The Leaving Care Team has 2 Homelessness & Housing workers who can provide you with housing advice, information, and support. One additional worker focuses solely on housing support for Young People seeking Asylum
- Warwickshire Leaving Care Team has sometimes been able to act as a rent guarantor for young people, this will be decided on a case by case basis. Ask your Personal Advisor for more information

# Education, Employment & Training (EET)



## Careers Support & Guidance

### Children In Care Team 14-18 years old

- If you are 14-16 you will be supported by the school Careers Advisor where appropriate, additional support can be given if required.
- If you are 16-18 and not in Education, Employment or Training a Careers Advisor will be provided by Prospects for Warwickshire residents only

## Careers Support & Guidance

### Leaving Care & Unaccompanied Asylum Seeking Young People 18-25 years old (Warwickshire and non-Warwickshire residents)

- A dedicated Careers Support and Guidance Advisor who works within the Leaving Care & UASC team will support you to plan your next steps in education, employment or training.
- A Careers Advisor will provide high quality careers and educational information, advice and guidance to you. Build positive relationships with you that encourage, motivate and raise your aspirations.
- Build positive relationships with you that encourage, motivate and raise your aspirations.
- Give you guidance on completing application forms, interview techniques, presentation skills and CV writing.
- Have local knowledge of employers, training providers, apprenticeship providers, colleges to provide accurate career progression information for you.
- Provide you with practical support to attend college, University, employment and apprenticeship interviews
- Set up a Drop In for young people that are not in education, employment or training aged 16+ in both North and South Warwickshire bases.

## Further Education - Colleges

- Your Personal Advisor will support you to apply for a £1200 education bursary when you start attending college.

## Higher Education - University

- You will receive a bursary of £1000 a year if you attend university for a total of up to 3 years up to the age of 25. (The accommodation deposit is paid from this £1000)
- The Asylum and Leaving Care Team will contribute to your accommodation costs during holiday time when you are attending university.
- If you are staying in Supported Lodgings or Staying Put accommodation during university holidays, we will pay your transport costs to and from your university
- Your travel costs will be paid when you attend University Open Days. You can ask your Personal Advisor to attend with you
- We will offer to help you to move to University
- We will provide you with a gift when you complete your higher education (university) of up to £100
- We will pay for the cost of renting a gown and hat for your university graduation and can attend to celebrate with you.

## Work

- Your travel cost will be paid to attend an interview, and if you are successful, you will receive financial support to cover travel to work for the first month until you get paid
- You will get pre-apprenticeship support, including work experience in the relevant area.
- We will create opportunities for care experienced young people to take on apprenticeship roles within Warwickshire County Council
- We guarantee care experienced young people an interview for apprenticeships within Warwickshire County Council
- Warwickshire County Council will pay care experienced young people the national minimum wage for apprenticeships and arrange for a bursary to be paid provided the apprenticeship is on track for completion

We will support you to access 10 free driving lessons or CBT motorcycling training lessons between the ages of 17 to 21 years, with an approved instructor.

## Other support

- Should you need to access Universal Credit and housing benefit your Personal Advisor will support you in making a claim. A claim can be made 4 weeks before you turn 18.
- You can make a request for financial support through your Personal Advisor to the EET/Tiffin fund for transport costs to attend interviews, education, buy work clothes, books, equipment, laptops, cover the cost of industry accredited courses, some extracurricular activities, registration and exam costs.
- You can attend the Virtual School Awards Event and be put forward for an award for your achievements by your Personal Advisor.
- We can offer support in paying childcare costs for young parents in education and employment, this will be decided on a case by case basis. Ask your Personal Advisor for more details.
- If you are a young person seeking asylum your personal advisor will look for education for you.
- Financial support can be provided for additional tutoring if you need more support with your studies. We will fund tuition and retakes for Maths and English



# Health & Wellbeing



The emotional wellbeing of children and young people is just as important as their physical health. Good mental health allows children and young people to develop the strength to cope with whatever life throws at them and grow into well rounded, healthy adults. Speak to your Personal Advisor if you need more information.



A nurse will invite you to an annual health check up until the age of 18 years. This can be carried out anywhere that suits you.



Your Personal Advisor can support you to register with a local GP, Dentist and Optician. You can ask your Personal Advisor to attend appointments with you if you wish.



Your Personal Advisor can help you apply for a Health Cost Certificate (HC1) or a Medical Exemption Certificate if you need one.



Your Personal Advisor can give you information on counselling services. For example, sexual health, mental health and more.



We may give you incentive payments to attend annual health and dental checks until the age of 18 years



You will be offered a final meeting before you turn 18 with a nurse to review your Health Passport. If you do not receive your Health Passport by the time you turn 18 you can request one from your Personal Advisor



You can request a leisure or gym pass from your Personal Advisor up to the age of 21. This will be renewed monthly. If you live outside of Warwickshire, you can request a £25 contribution per month for a leisure or gym membership



You can attend 'staying healthy mind and body' workshops sessions at the North and South Drop In centres



The Family Nurse Partnership offer support to young people who are pregnant before their 18th birthday and they continue to support the young parent until the child is 2 years old.



Financial support for additional medical appointments and transport to these appointments can be considered and will be decided on a case by case basis.

If you are in crisis you can contact the Emergency Duty Team on **01926 886922**



# Relationships & Socialising



The Asylum and Leaving Care Team will invite you to an Annual Celebration event (held during Care Leavers week)



Your Personal Advisor will encourage you to establish and maintain healthy relationships, such as, family, friends and past carers.



The Asylum and Leaving Care Team will provide you with a present of £50 for your birthday and £50 for Christmas or a festival of your choice up until the age of 21



The Asylum and Leaving Care Team will run a group for young parents to get together



The Asylum and Leaving Care Team have a Drop In centre in Warwick and Nuneaton for you to take part in social activities, workshops, training , etc.



The Asylum and Leaving Care Team will run group work with Unaccompanied Asylum Seekers on relationships and reducing isolation.



We will celebrate important events in your life i.e. a gift hamper when you have a baby, a letter to recognise your achievements, a voucher etc.



We will organise a wide and varied calendar of events throughout the year, for example , day trips, residentials, training workshops, fun games, barbeques, etc. Please ask your Personal Advisor for more details.



We will gift you a box of baby essentials up to the value of £50 for any eligible care leaver aged 16-25 who is a new parent. We will also provide £200 to purchase essential items such as a cot, buggy or car seat, etc.



You can ask your Personal Advisor for an Independent Visitor.



Your travel costs to go and see your family will be paid up until the age of 21.



You can request a mentor to support you with specific help and support, for example, with your studies, learning a new skill, building your confidence or just having someone to listen and talk through your ideas and thoughts . The mentor can be someone older (GrandMentors) or someone closer to your age group (Peer to Peer mentors). You can ask your Personal Advisor to provide more details



We can offer you training to become a Peer to Peer Mentor if this is something that interests you.



We will encourage and support you to take part in the National Citizenship Service activities

# Participation



There is a Warwickshire Care Leavers Facebook account (L C Warwickshire) which is regularly updated and will keep you informed of what events and activities are happening.  
[www.facebook.com/lc.warwickshire](http://www.facebook.com/lc.warwickshire)



If you feel you need support in getting your views across in meetings or with other services, you can ask for an Advocate to speak for you or act on your behalf.



If you wish to make any complaints, comments or compliments then you can **Write to:**  
The Customer Relations Team, PO Box 9, Shire Hall, Warwick, CV34 4RD  
**or phone:** 01926 414102  
<https://www.warwickshire.gov.uk/complaints>



We will create opportunities for young people to be able to speak with Warwickshire County Council Councillors, for example, the Corporate Parenting Panel, Overview and Scrutiny Committees and Cabinet meetings



We will support young people to attend regional and national events, for example Regional Children in Care Council, Young People Bench Marking Forum.



You will be given opportunities to participate in the Children In Care Council and Care Leavers Forum.



You will be given opportunities to be involved in the design and development of Council services.



Your Personal Advisor will assist you to enrol on the Electoral Register.



We will encourage and support young people to take part in volunteering activities.



You will be given opportunities to participate in the Warwickshire Youth Council or the Warwickshire members of the Youth Parliament.



We will create opportunities for young people to speak with Senior Managers of the service, for example, the Senior Leadership Team



We will create opportunities for young people to meet with the Director of the People Group and the Chief Executive of Warwickshire County Council



We will support young people to train as Young Inspectors and support them to carry out appropriate inspections of County Council services



We will offer incentives to young people when they are invited to take part in consultation events outside of the Children in Care Council and Care Leavers Forum



You will receive £10 if you 'chair' your own review or pathway plan meetings.

# Useful Contacts

## Money & Finance

Step Change	<a href="http://www.stepchange.org">www.stepchange.org</a>	Offers free, impartial and confidential advice to help people deal with their debts.
Citizens Advice	<a href="http://www.citizensadvice.org.uk">www.citizensadvice.org.uk</a> Tel: 03444 111 444	Offers a range of housing advice on areas including renting, repairs, council tax, rent arrears, discrimination, moving and improving your home and problems where you live.
Money Saving Expert	<a href="http://www.moneysavingexpert.com">www.moneysavingexpert.com</a>	Offers advice on how to save money, including help with banking and saving, utilities bill, travel and motoring, insurance, etc.
Rees Crisis Fund	<a href="http://www.reesfoundation.org/contact/">www.reesfoundation.org/contact/</a>	Offers financial support for care leavers in emergency situations, for example, food, gas/ electricity, transport.

## Unaccompanied Asylum Seekers

Refugee Council	<a href="http://www.refugeecouncil.org.uk">www.refugeecouncil.org.uk</a>	Is for refugees and people seeking asylum in the UK. It offers advice and information for refugees.
Asylum Support Tribunal	Tel: 0207 7538 6171 <a href="http://www.gov.uk/appeal-first-tier-asylum-support-tribunal">www.gov.uk/appeal-first-tier-asylum-support-tribunal</a>	Considers appeals against decisions made by the UK Border Agency and is independent of government.
Asylum Aid	Tel: 0207 7354 9264 (Tuesdays 1-4pm) Email: <a href="mailto:info@asylumaid.org.uk">info@asylumaid.org.uk</a> <a href="http://www.asylumaid.org.uk/services/">www.asylumaid.org.uk/services/</a>	Assists refugees on their applications for asylum in the UK and offers advice on related areas such as appeal against refusal, welfare rights and housing.

## Housing & Accommodation

Housing Officer	<p><b>Email:</b> <a href="mailto:samchurch@warwickshire.gov.uk">samchurch@warwickshire.gov.uk</a></p> <p><b>Tel:</b> 01926 414841</p>	Offers support to young people in tenancy arrangements and encouraging them to take part in tenancy groups.
National Homeless Advice Service	<p><a href="http://www.nhas.org.uk/improving-outcomes/advising-young-people/when-young-people-have-to-move-out/care-leavers/emergency-housing-for-care-leavers">www.nhas.org.uk/improving-outcomes/advising-young-people/when-young-people-have-to-move-out/care-leavers/emergency-housing-for-care-leavers</a></p>	Offers advice about homelessness including the provision of emergency housing for care leavers
The Albert Kennedy Trust	<p><b>Tel:</b> 0207 831 6562</p> <p><a href="http://www.akt.org.uk">www.akt.org.uk</a></p>	Helps young people up to the age of 25 who are Lesbian, gay, Bisexual, trans or Intersex and are homeless or at risk of homelessness
Shelter	<p><a href="http://www.shelter.org.uk">www.shelter.org.uk</a></p>	Offers advice and guidance on housing matters, including advice to specific care leavers.
North Warwickshire Borough Council	<p><b>Tel:</b> 01827 715341</p> <p><b>Email:</b> <a href="mailto:customerservices@northwarks.gov.uk">customerservices@northwarks.gov.uk</a></p> <p><a href="http://www.northwarks.gov.uk">www.northwarks.gov.uk</a></p>	Offers advice on housing, Council tax and other local services
Nuneaton & Bedworth Borough Council	<p><b>Tel:</b> 024 7637 6376</p> <p><b>Email:</b> <a href="mailto:customer.services@nuneatonandbedworth.gov.uk">customer.services@nuneatonandbedworth.gov.uk</a></p> <p><a href="http://www.nuneatonandbedworth.gov.uk">www.nuneatonandbedworth.gov.uk</a></p>	Offers advice on housing, Council tax and other local services
Rugby Borough Council	<p><b>Tel:</b> 01788 533533</p> <p><b>Email:</b> <a href="mailto:contact.centre@rugby.gov.uk">contact.centre@rugby.gov.uk</a></p> <p><a href="http://www.rugby.gov.uk">www.rugby.gov.uk</a></p>	Offers advice on housing, Council tax and other local services
Stratford District Council	<p><a href="http://www.stratford.gov.uk">www.stratford.gov.uk</a></p> <p><b>Tel:</b> 01789 267575</p> <p><b>Email:</b> <a href="mailto:info@stratford-dc.gov.uk">info@stratford-dc.gov.uk</a></p>	Offers advice on housing, Council tax and other local services
Warwick District Council	<p><b>SwitchBoard:</b> 01926 450000</p> <p><a href="http://www.warwickdc.gov.uk">www.warwickdc.gov.uk</a></p> <p><b>Email:</b> <a href="mailto:contactus@warwickdc.gov.uk">contactus@warwickdc.gov.uk</a></p>	Offers advice on housing, Council tax and other local services

## Health & Wellbeing

Named Nurse	Named Nurse - Angela Richardson Specialist Nurse - Elsie Samms Specialist Nurse - Jackie Beasley Tel: 02476378610	Offers complete health assessments and an opportunity to chat about your health and well-being.
RISE	Tel: 0300 200 2021 <a href="http://www.cwriase.com">www.cwriase.com</a>	Coventry and Warwickshire's emotional well-being and mental health services for children and young people.
Bullying UK/ Family lives	<a href="http://www.bullying.co.uk">www.bullying.co.uk</a> <a href="http://www.familylives.org.uk">www.familylives.org.uk</a> Tel: 0808 800 2222	Support on bullying, parenting, and much more. Confidential helpline available.
Kooth	<a href="http://www.kooth.com">www.kooth.com</a>	Free, safe and anonymous online support for young people who wish to talk about their mental health with someone
Respect Yourself	<a href="http://www.respectyourself.info">www.respectyourself.info</a>	Offers information on sexual health awareness and relationships
Talk to Frank	Tel: 0300 123 6600 SMS: 82111 <a href="http://www.talktofrank.com">www.talktofrank.com</a>	Offers information and awareness on drugs/ alcohol
Samaritans	24/7 confidential support: 116 123 Email: <a href="http://www.samaritans.org/how-we-can-help-you/contact-us">www.samaritans.org/how-we-can-help-you/contact-us</a>	Offers a safe and anonymous place for you to talk any time you like about what is getting to you.
Brook	<a href="http://www.brook.org.uk">www.brook.org.uk</a>	Offers information and advice on sexual health and relationships, including sex, contraception, STI's, pregnancy, abuse and more
Coventry & Warwickshire MIND	<a href="http://www.cwmind.org.uk/children-young-health">www.cwmind.org.uk/children-young-health</a> Facebook: <a href="http://www.facebook.com/cwmind/?ref=ts">www.facebook.com/cwmind/?ref=ts</a>	Offers information and advice to young people with mental health worries.
Young Stonewall	<a href="http://www.youngstonewall.org.uk">www.youngstonewall.org.uk</a> Tel: 08000 50 20 20 Email: <a href="mailto:info@stonewall.org.uk">info@stonewall.org.uk</a>	Offers support to empower young lesbian, gay, bi and trans people to live free from discrimination and fulfil their potential

COMPASS	<a href="https://www.compass-uk.org/services/warwickshire-cypdas/">https://www.compass-uk.org/services/warwickshire-cypdas/</a> Tel: 01788 578 227 -	Provides information and advice on smoking, drugs and alcohol, sexual health, emotional health, healthy eating and healthy relationships
---------	---	--

## Pregnancy & Parenting

Family Nurse Partnership	<b>Tel:</b> 01926 400001 - South Warwickshire & Rugby <b>Tel:</b> 024 7649 1138 - North Warwickshire <a href="http://www.fnp.nhs.uk">www.fnp.nhs.uk</a>	Offers a structured, home visiting programme. It is available to first time mums and dads under the age of 20 years
Children's Centres	<a href="http://www.warwickshire.gov.uk/childrenscentres">www.warwickshire.gov.uk/childrenscentres</a> <b>Tel:</b> for more info; 0192674227 <b>Email:</b> <a href="mailto:fis@warwickshire.gov.uk">fis@warwickshire.gov.uk</a>	Offers a welcoming space where you and your child can have fun and learn together

## Support

Asylum & Leaving Care Service	<b>Tel:</b> 01926 414 888 <b>Email:</b> <a href="mailto:feedback@warwickshire.gov.uk">feedback@warwickshire.gov.uk</a> <a href="http://www.warwickshire.gov.uk/leavingcare">www.warwickshire.gov.uk/leavingcare</a>	Offer support and advice for young people becoming more independent, leaving care or seeking asylum
Barnardos Advocacy Service	<a href="http://www.barnardos.org.uk/coventry-and-warwickshire-crs/service-view.htm?id=174031156">www.barnardos.org.uk/coventry-and-warwickshire-crs/service-view.htm?id=174031156</a> <b>Tel:</b> 02476 372596	Offers support on the right of a looked after child to be heard and involved in decisions through 1:1 support and independent visitors.
Barnardos Independent Visitor	<a href="http://www.barnardos.org.uk/coventry-and-warwickshire-crs/service-view.htm?id=174031156">www.barnardos.org.uk/coventry-and-warwickshire-crs/service-view.htm?id=174031156</a> <b>Tel:</b> 02476 372596	Offers access to an independent supporting adult in situations where the young person may have little or no positive contact with members of their own family.
Mentoring Coordinator	For more information contact Farzana Topia - 078 0854 9146 - <a href="mailto:farzana.topia@volunteeringmatters.org.uk">farzana.topia@volunteeringmatters.org.uk</a>	Offers one to one support to help support care leavers work through issues important to them

Duty Worker Contact	<a href="http://www.warwickshire.gov.uk/leavingcare">www.warwickshire.gov.uk/leavingcare</a> <b>Tel:</b> 01924 414891 <b>Email:</b> leavingcareduty@warwickshire.gov.uk	Offers young people support when their Personal Advisor or Social Worker is unavailable.
Out of Hours Contact	<b>Tel:</b> 01926 886922	Offers support and advice to young people evenings and weekends.
Family Information Service	<a href="http://www.warwickshire.gov.uk/fis">www.warwickshire.gov.uk/fis</a> <b>Tel:</b> 01926 742274 08450 908044 <a href="http://www.facebook.com/WarwickshireFIS">www.facebook.com/WarwickshireFIS</a> <b>Email:</b> fis@warwickshire.gov.uk	Offers free information to support families with children and young people aged 0 to 25 across Warwickshire.
Youth Offending Team	<a href="http://www.gov.uk/youth-offending-team">www.gov.uk/youth-offending-team</a> <b>Warwickshire:</b> <b>Email:</b> sallynash@warwickshire.gov.uk <b>Tel:</b> 01926 682661 <b>Coventry:</b> <b>Email:</b> georgina.kell@coventry.gov.uk <b>Tel:</b> 02476 831414	Offers support to work with young people that get into trouble with the law.
Young People First	<a href="http://www.youngpeoplefirst.org.uk/">http://www.youngpeoplefirst.org.uk/</a> <b>Tel:</b> 01926 450156 <b>Email:</b> info@youngpeoplefirst.org.uk	Offer activities, create opportunities and provide support to help disadvantaged young people transition to a self-assured adulthood.
LGBT groups	<a href="http://www.warwickshirepride.co.uk/">http://www.warwickshirepride.co.uk/</a> <b>Email:</b> info@warwickshirepride.co.uk <b>Phone:</b> 07580 532659  <a href="http://www.proudyouth.co.uk/">http://www.proudyouth.co.uk/</a> <b>foTelephone:</b> 07580 532659 <b>Email:</b> info@proudyouth.co.uk	<p>Offer activities, create opportunities and provide support to help disadvantaged young people transition to a self-assured adulthood.</p> <p>Offers groups and activities that LGBT+ young people can get involved with</p>



## Education Employment & Training

Careers Advisor	<p><b>Email:</b> <a href="mailto:sallystapleton@warwickshire.gov.uk">sallystapleton@warwickshire.gov.uk</a>  <b>Tel:</b> 07884475688</p>	Offers young people careers advice around employment, training and education, i.e College/University
Warwickshire College & Rugby College	<p><b>Telephone:</b> 0300 456 0047  <b>Email:</b> <a href="mailto:info@wcg.ac.uk">info@wcg.ac.uk</a>  <a href="http://www.wcg.ac.uk">www.wcg.ac.uk</a></p>	Offer a range of courses, advice and support in Leamington & Rugby
North Warwickshire & Hinckley College	<p><b>Tel:</b> 02476243000  <a href="http://www.nwhc.ac.uk">www.nwhc.ac.uk</a></p>	Offer a range of courses, advice and support in North Warwickshire & Hinckley
Stratford Upon-Avon College	<p><a href="http://www.stratford.ac.uk">www.stratford.ac.uk</a>  <b>Tel:</b> 01789 266245  <b>Email:</b> <a href="mailto:hello@stratford.ac.uk">hello@stratford.ac.uk</a></p>	Offer a range of courses, advice and support in Stratford
UCAS	<p>Facebook: <a href="https://www.facebook.com/ucasonline">facebook.com/ucasonline</a>  <a href="http://www.ucas.com">www.ucas.com</a></p>	Can offer information about courses available nationally and help you with applying for Uni
Jobcentre Plus	<p><a href="http://www.gov.uk/contact-jobcentre-plus">www.gov.uk/contact-jobcentre-plus</a></p>	Offers support on benefit claims, finding work and national insurance numbers
Buttle Charity	<p><b>Tel:</b> 020 7828 7311  <a href="http://www.buttleuk.org">www.buttleuk.org</a></p>	Offers help with grants for education for children and young people who are in need of help and support
Student Finance	<p><a href="http://www.gov.uk/browse/education/student-finance">www.gov.uk/browse/education/student-finance</a></p>	Offers advice on financial support available to students
House Project	<p><b>Email:</b> <a href="mailto:Mattsmith@warwickshire.gov.uk">Mattsmith@warwickshire.gov.uk</a>  <b>Tel:</b> 07500 606669</p>	Offers young people an opportunity to complete an independent life skills course and then refurbish their own home
Apprenticeship Hub	<p><b>Apprenticeships email:</b>  <a href="mailto:danielnash@warwickshire.gov.uk">danielnash@warwickshire.gov.uk</a></p> <p><b>Work Experience email:</b>  <a href="mailto:leannflegg@warwickshire.gov.uk">leannflegg@warwickshire.gov.uk</a>  <b>Tel:</b> 01926 418040</p> <p><a href="http://www.warwickshire.gov.uk/apprenticeships">www.warwickshire.gov.uk/apprenticeships</a></p>	Offers young people support around getting work experience and apprenticeships within Warwickshire County Council

## Taking Part

Care Leavers Forum	<p><b>Email:</b> <a href="mailto:shinderpaulbhanga@warwickshire.gov.uk">shinderpaulbhanga@warwickshire.gov.uk</a></p> <p><b>Tel:</b> 07771 513 742</p> <p><b>FB:</b> <a href="http://www.facebook.com/lc.warwickshire">www.facebook.com/lc.warwickshire</a></p>	Offers an opportunity to meet with other young people leaving care and discuss issues important to them and make changes to Council services
Children in Care Council	<p><b>Email:</b> <a href="mailto:Shinderpaul.Bhanga@warwickshire.gov.uk">Shinderpaul Bhanga@warwickshire.gov.uk</a></p> <p><b>Tel:</b> 07771 513 742</p> <p><b>FB:</b> <a href="http://www.facebook.com/cicccwarwickshire">www.facebook.com/cicccwarwickshire</a></p>	Offers an opportunity to meet with other young people in care and discuss issues important to them and make changes to Council services

## Other interesting contacts/information

Princes Trust	<p><a href="http://www.princes-trust.org.uk">www.princes-trust.org.uk</a></p> <p><b>Tel:</b> 0800 842 842</p>	Offers support to vulnerable young people 11 to 30 year-olds who are unemployed and those struggling at school and at risk of exclusion.
Child Law Advice	<p><a href="http://www.childlawadvice.org.uk/information-pages/services-for-children-leaving-care/">www.childlawadvice.org.uk/information-pages/services-for-children-leaving-care/</a></p>	Offers legal advice and information to young people.
Childline	<p><a href="http://www.childline.org.uk">www.childline.org.uk</a></p> <p><b>Tel:</b> 0800 1111</p>	Offers a counselling service for children and young people up to their 19th birthday
Muslim Youth Helpline	<p><b>Email:</b> <a href="mailto:help@myh.org.uk">help@myh.org.uk</a></p> <p><b>Tel:</b> 0808 808 2008</p> <p><a href="http://www.myh.org.uk">www.myh.org.uk</a></p>	Offers faith and culturally sensitive services to Muslim youth
Care Leavers Foundation	<p><a href="http://www.thecareleaversfoundation.org">www.thecareleaversfoundation.org</a></p> <p><b>Tel:</b> 0167 854 0598</p>	Offers help, support and small grants to care leavers aged 18-29
Become	<p><a href="http://www.becomecharity.org.uk">www.becomecharity.org.uk</a></p> <p><b>Tel:</b> 0800 023 2033</p> <p><b>Email:</b> <a href="mailto:advice@becomecharity.org.uk">advice@becomecharity.org.uk</a></p>	Offers practical advice to help young people work through their issues.

<p>Children's Commissioner</p>	<p><a href="http://www.childrenscommissioner.gov.uk">www.childrenscommissioner.gov.uk</a>  <b>Tel:</b> 020 7783 8330.  <b>Email:</b> info.request@childrenscommissioner.gov.uk</p>	<p>Offers support to stand up for the rights of children and young people on lots of different issues.</p>
<p>Care Leavers Covenant</p>	<p><a href="http://www.spectrafirst.com/identity-cms/wp-content/uploads/2018/08/Care-Leaver-Covenant-Summary.pdf">www.spectrafirst.com/identity-cms/wp-content/uploads/2018/08/Care-Leaver-Covenant-Summary.pdf</a></p>	<p>The Covenant is a promise made by the employers, the County Council and Charities to support care leavers aged 16-25 to help them to live independently.</p>
<p>Care Leavers Association</p>	<p><a href="https://www.careleavers.com/">https://www.careleavers.com/</a>  <b>Tel:</b> 0161 236 5665</p>	<p>Offers lots of information, advice and support to care leavers</p>

# Jargon Buster! -

## What words 'they' use...

### Money & Finance

<b>Bank Account</b>	Bank accounts give you easy access to your money. You receive a debit card and this means you can take money out of cash machines and pay for things in shops
<b>Savings Account</b>	Savings accounts are great for storing money you want to keep in a bank for a long time, without using it. It can earn you interest (a little extra money)
<b>Junior ISA</b>	This works in much the same way as a savings account, except you do not pay tax on the interest you get.
<b>Bursary</b>	This is a grant given to someone to help them to study at university, college or in employment
<b>Universal Credit</b>	Universal Credit is a new benefit to support you if you're working and on a low income or you're out of work
<b>Barradell Award</b>	This fund is set up to encourage children and young people in Warwickshire to take part in mainstream social activities and to recognise their achievements
<b>Tiffin Fund</b>	This fund provides extra money for education and career/business support for young people

### Housing & Accommodation

<b>Shared Accomodation</b>	This is when an apartment is shared by two or more young people. This may have support available on site.
<b>Supported Accommodation</b>	This is when you have a room/flat in a bigger property that is shared with other young people and has staff support available on site
<b>Supported Lodgings</b>	This is when you rent a room in a house and live with the owner.

<b>'Staying Put' Programme</b>	This is when there is agreement between you and your previous foster care that you can stay until the age of 21. This is not the same as a foster placement.
<b>Private Renting</b>	This means renting from someone who owns a property. They usually rent it out so they can make money. They are called private landlords.
<b>Priority nomination banding</b>	The priority bands range from A - E, with band A being the highest priority to move into a house.
<b>Local Authority Housing Association</b>	Housing associations are independent organisations, often funded by the government, providing housing for people in need.
<b>Warwickshire House Project</b>	Offers young people an opportunity to complete an independent life skills course and then refurbish their own home
<b>Tenancy Arrangement</b>	A tenancy agreement is a contract between you and your landlord. It may be written or spoken agreement
<b>Guarantor</b>	A guarantor is a third party who agrees to pay your rent if you don't pay it. Your landlord can take legal action to recover any unpaid rent from your guarantor. You need one of these to be able to rent a home privately
<b>Crash pad</b>	This is an emergency placement needed when you have nowhere else to go.
<b>Housing Officer</b>	This is someone who supports tenants and encourages them to take part in tenancy groups. This job would typically include: assessing the needs of people applying for housing
<b>Council Tax</b>	This is a tax on homes by a local council based on the estimated value of your home and the number of people living in it.
<b>Intentionally homeless</b>	This means that you could have avoided becoming homeless.
<b>Housing benefit</b>	Housing benefit is a regular payment made by the Government to help those on low incomes pay for rented accommodation
<b>Live Independently</b>	This is about helping young people learn new skills so that they can make the changes needed to live life as a responsible adult

## Health & WellBeing

<b>Health Cost Certificate</b>	A Health Cost Certificate helps with health costs, including free NHS prescriptions
<b>Named Nurse</b>	This is a nurse whose job it is to check and improve the health of young people
<b>GP (General Practitioner)</b>	This is doctor based in the community who treats patients with minor or chronic illnesses and refers those with serious conditions to a hospital
<b>Mentoring Programme</b>	If you have worry, question, concern, challenge, interest or even an opportunity you want to make the most of.... A volunteer mentor can explore these with you
<b>Health Passport</b>	This is a booklet that will have information about your health in it
<b>Mother and Baby unit</b>	This provides specialist care and treatment for mothers with their babies when they are in need of help and support

## Support

<b>Social Worker</b>	This is a person who works for social services or for a private business providing help and support for people who need it
<b>Care Plan</b>	This is the plan for you while you are in care. It will include things about your education, health, where you live, your interests and more
<b>Personal Advisor</b>	This is a staff member who works with young people from the age of 18 to help guide and support you through independence
<b>Independent Reviewing Officer</b>	A worker who will meet you twice a year to make sure your care plan is right for you
<b>Independent Visitor</b>	This is a volunteer who is not connected to the council, who can support young people like a mentor (a friend to hang out with)
<b>Advocacy Services or Advocate</b>	An adult who can help you get your voice heard when you feel unhappy and feel you are not being listened to.

<b>Pathway Planning</b>	Every young person, by law, must have a pathway plan, usually starting around your 16th birthday. Your pathway plan says how the council will help you prepare to live independently
<b>Asylum and Leaving Care Team</b>	This council service helps young people move from being in care into independent living

## Education Employment and Training

<b>Education, Employment &amp; Training (EET)</b>	This means you are studying, working or learning
<b>Further or Higher Education</b>	This generally means studying at a college or university
<b>Work Experience</b>	This is like being a volunteer in a workplace to help you to get a feel for working environments
<b>Apprenticeship</b>	This is a job with training. Being an apprentice means that you get a qualification and skills whilst you are working and earning a wage
<b>Careers Adviser</b>	This is a person trained in giving advice on training, education and employment
<b>CV (Curriculum Vitae)</b>	A CV is a brief summary of a person's education, qualifications, and previous occupations, typically sent with a job application

## Taking Part

<b>Children in Care Council</b>	A group of young people who meet monthly and talk with Council workers to explain how things could be made better for children and young people
<b>Virtual School Awards</b>	This is an event once a year (usually around September) to celebrate young people's achievements.
<b>Care Leavers Forum</b>	A group of young people who meet monthly and talk with Council workers to explain how things could be made better for young people
<b>Electoral Register</b>	This is an official list of the people in a area/district who are entitled to vote in an election.

## Others

Passport	This is an official document that shows who you are and allows you to travel to other countries
National Insurance	You need a National Insurance number before you can start working. You pay National Insurance contributions to get certain benefits, including the state pension
Provisional Licence	This gives you permission to drive on the UK roads, whilst under the supervision of your driving instructor or another driver over the age of 21 who has held a full driving licence for a minimum of three years.
Birth Certificate	This is an official document which records a person's birth and identifies them by name, place, date of birth, and parentage



**Thanks to all the young people who have helped  
produce this booklet.**

**This booklet will be updated annually.**

**Version: May 2020**

If you have been looked after by Warwickshire County Council in the past and think that you may qualify for leaving care services please contact:  
the Leaving Care and Asylum Team 01926 414888