



# RAIL Trails



## Hatton to Lapworth Walk

Image by Visit Warwickshire

This trail takes you from the station at Hatton who's most notable landmark is the **Hatton Locks** – a lovely location to watch colourful narrowboats as they move through the flight of 21 locks, onto the Lapworth and Kingswood via the towpath of the Grand Union Canal.

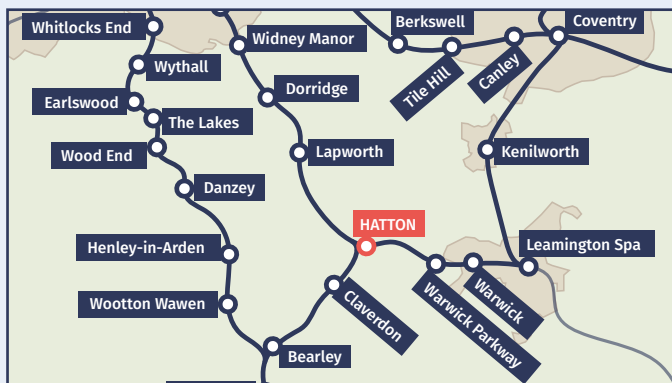
For provisions on route, you'll find the **Shrewley Village Store** in the heart of Shrewley village, the **Canal Shop and Moorings** near the Kingswood Junction and **The Lapworth Village Shop**, close to Lapworth station. Lapworth village is a further 2 1/2 miles west, but do take a look at the stained glass windows, sculptures and carvings at the Grade I listed Church of **St. Mary the Virgin**, or strike out further to the stately home of **Baddesley Clinton**.

This part of the Warwickshire countryside is a gourmet's paradise. Near Kingswood, the **Navigation Inn**, **Punchbowl** and **Boot Inn** all offer delicious food served with the best ales and wines, whilst the **Tom O' the Wood** and the **Durham Ox** are just a stone's throw from the trail.

### Further Information:



Visit [www.lapworth.org](http://www.lapworth.org) for local information or [www.shakespeares-england.co.uk](http://www.shakespeares-england.co.uk) for more on what to see and do in the wider area.



**Hatton** is the junction station at which the lines from Leamington Spa to Stratford-upon-Avon and Birmingham diverge. There are direct services to Stratford-upon-Avon and intermediate stations, Warwick, Leamington Spa and stations to London Marylebone and Birmingham Snow Hill.

There are limited facilities available at this station.

### Want More?

This is just one of a range of 36 self-guided walks from railway stations in Warwickshire, Coventry and Solihull.



Discover the Heart of England by rail at: [www.heartcommunityrail.org.uk/railtrails](http://www.heartcommunityrail.org.uk/railtrails)



Design by: [www.blackspiraldesign.co.uk](http://www.blackspiraldesign.co.uk)



Image by Colour Rail

# RAIL Trails



Discover The Heart of England by Rail



## Hatton

Image by Damian Walmsley

🕒 2.5 Hours   🚶 5 Miles   🚶 Easy

Start: **Hatton** Finish: **Lapworth**

An easy five-mile amble following the towpath of the Grand Union Canal through some of Warwickshire's finest countryside.

[www.heartcommunityrail.org.uk/railtrails](http://www.heartcommunityrail.org.uk/railtrails)



## Places nearby...



Image by Robert Harding / Alamy

### A. The Grand Union Canal

The principal navigable waterway between London and the Midlands, stretching for 137 miles with 166 locks. The Stratford-upon-Avon Canal joins it at Kingswood Junction - a great place to enjoy a picnic!

[www.canalrivertrust.org.uk](http://www.canalrivertrust.org.uk)



Image by The Durham Ox

### B. The Durham Ox

A bar and restaurant in Shrewley that also has a large outside seating area. Huge pride is taken in sourcing and using local produce which is all prepared and cooked fresh on-site.

[www.durhamoxshrewley.co.uk](http://www.durhamoxshrewley.co.uk)



Image by Tom O'The Wood

### C. Tom O'The Wood

A country pub right alongside the Grand Union canal... with a passion for serving homemade food, locally sourced from local suppliers & farms. You will even find their own hand reared pigs on the specials menu (not to be missed)!

[www.tomothewood.co.uk](http://www.tomothewood.co.uk)



Image by Forestry England

### D. Hay Wood

A peaceful ancient woodland site, stacked full of footpaths and bridleways. Happily there is also a great diversity of wildlife to look out for, including Muntjac Deer, and a carpet of Bluebells in spring.

[www.forestryengland.uk/hay-wood](http://www.forestryengland.uk/hay-wood)



Image by DeFacto

### E. Baddesley Clinton

A secluded, intimate estate built in 1500 in the heart of the Forest of Arden. Stroll through the walled garden, seek out the hiding spot for priests and admire the oh-so-gorgeous views across the moat.

[www.nationaltrust.org.uk/baddesley-clinton](http://www.nationaltrust.org.uk/baddesley-clinton)



Image by Sam Johnson

### F. Hatton Locks

Hatton's famous 'stairway to heaven' flight of 21 locks is a lovely spot to watch the colourful narrowboats as they traverse the Grand Union Canal. Top place for a picnic too!

[www.canalrivertrust.org.uk](http://www.canalrivertrust.org.uk)

## Did you know?

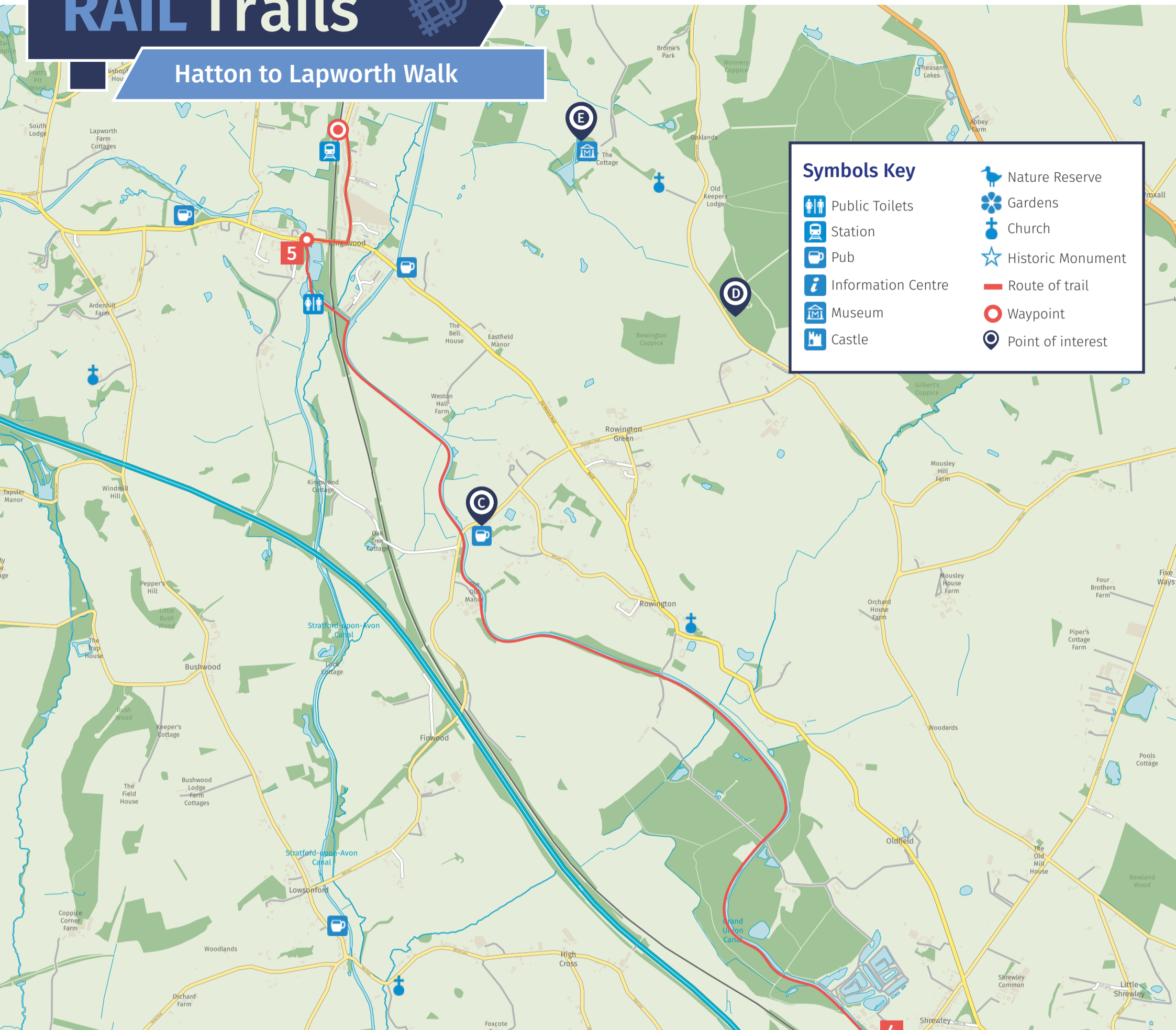


**Baddesley Clinton** was the home of the same family, the Ferrers, for 500 years. Despite never being very wealthy, it passed from father to son for 12 generations.

# RAIL Trails



## Hatton to Lapworth Walk



### Symbols Key

	Public Toilets		Nature Reserve
	Station		Gardens
	Pub		Church
	Information Centre		Historic Monument
	Museum		Route of trail
	Castle		Waypoint
			Point of interest

### Trail Directions

1. From station car park, up road to junction. Cross road ahead and slightly right to go through small wooden gate of left of telegraph pole. Ahead down steps and at bottom turn left on towpath with canal on right.
2. Ahead ½ mile on towpath (take care - some sections are very narrow, and mind your head on low bridges) to where it ends at entrance to tunnel. Up paved path to left, then between wooden posts onto partly gravelled track. Ahead, ignoring field entrances on left and right, to road.
3. Cross road and ahead down path to right of house number 96 (Orchard Cottage), with Canal and River Trust signpost in hedge. Down steps and through tunnel to rejoin towpath, again with canal on right. Take care again - more narrow path sections and low bridges.
4. Ahead 3 miles on towpath. At canal junction, do not cross bridge ahead, but turn left on towpath (signposted Stratford Canal). Under railway bridge, then turn right across small black and white bridge. Ahead (signposted Kings Norton), passing lock on right. Cross another bridge and turn right. Pass another lock on right.
5. Under bridge 35 then double back to left and turn left to cross pedestrian bridge next to road bridge. Ahead on left-hand pavement and under railway bridge. Turn left onto Station Lane. Cross side road Lapworth Oaks and ahead ¼ mile on left-hand pavement to turn left into Lapworth station.



### Did you know?

The trail takes you past **Rowington Green**, where (privately owned) Shakespeare Hall is located. A branch of William Shakespeare's family is said to have lived here at the time he was alive. Rowington is mentioned in his will and it was rumoured that he wrote As You Like It here.

Want an online map?

Scan the QR code or visit [explore.osmaps.com](http://explore.osmaps.com)



Ready for another Trail?

Discover more at [www.heartcommunityrail.org.uk/railtrails](http://www.heartcommunityrail.org.uk/railtrails)

