



Image by Graham Bland

# RAIL Trails



## Bedworth to Bulkington

From the market town of Bedworth this trail takes you on field paths to the **Coventry Canal**, up to **Marston Junction** and back via the Ashby Canal and the village of Bulkington.

Before setting off from the market town of Bedworth you can fortify yourself at **Harry's Bakery** or **Latte Artist Coffee Shop** – both just a few minutes walk from the train station.

There's a number of places to eat or grab a drink in Bulkington too, such as the **Fishnet fish and chip shop**, the **Village Café** or the **Weavers Arms**. On the outskirts you'll pass the 16th century **Weston Hall Hotel** with old panelled bar and restaurant. Whilst here, take a look at **St. James' Church** and the lovely old timbered houses on Church Street. Following much redevelopment from the 1930s onwards, this is the only historic part of the village to survive!

On your return to Bedworth you may want to take a wander through the **Miners Welfare Park** for a glimpse at the coal mining history of the area

### Further Information:



Visit [www.visitnorthernwarwickshire.com](http://www.visitnorthernwarwickshire.com) for more information on where to visit and what to see locally.



**Bedworth** station is on the Coventry to Nuneaton line and is operated and served by West Midlands Trains. Bedworth's regular service southbound to Coventry and northbound to Nuneaton stop approximately every half hour. You will need to change at Coventry or Nuneaton for connecting services.

There are limited facilities at this station, although you will find options for refreshments nearby.

### Want More?

This is just one of a range of 36 self-guided walks from railway stations in Warwickshire, Coventry and Solihull.



Discover the Heart of England by rail at: [www.heartcommunityrail.org.uk/railtrails](http://www.heartcommunityrail.org.uk/railtrails)



Design by: [www.blackspiraldesign.co.uk](http://www.blackspiraldesign.co.uk)



# RAIL Trails



Discover The Heart of England by Rail



## Bedworth

Image by Rtaulbut

3 Hours 6.3 Miles Easy

Start: **Bedworth** Finish: **Bedworth**

A pleasant short walk over fields to the Coventry Canal, then up to Marston Junction and returning to Bedworth via the Ashby Canal.

[www.heartcommunityrail.org.uk/railtrails](http://www.heartcommunityrail.org.uk/railtrails)





## Trail Highlights...



Image by Nigel Shuttleworth

### A. Coventry Canal

Starting in the Coventry Canal Basin and stretching for 38 miles into the Midlands' countryside, much of the canal is rural, home to diverse wildlife and is popular with walkers, joggers and cyclists.

[www.canalrivertrust.org.uk](http://www.canalrivertrust.org.uk)



Image by The James Thornett

### B. Marston Junction

Where the Ashby Canal joins the Coventry Canal, this junction once held a stop lock where tolls were exacted from boats passing through. Nowadays its just an extremely pleasant spot to sit and enjoy...

[www.canalrivertrust.org.uk](http://www.canalrivertrust.org.uk)



Image by Warwickshire Churches

### C. St James Church

Dating from the early 13th century St James' sandstone tower houses a peal of eight bells, two of which are over 300 years old. Look out for the 1798 marble font by master sculptor Richard Haywood.

[www.stjameschurchbulkington.org.uk](http://www.stjameschurchbulkington.org.uk)



Image by DeanoG60

### D. Miners Welfare Park

Enjoy formal gardens, wildflower meadows and protected nature reserves on this former colliery site. You'll also find play areas, community gardens and the Mayor's cafe, serving locally grown veggie fare.

[www.facebook.com/bedworthcommunitygardens/](https://www.facebook.com/bedworthcommunitygardens/)

### Did you know?



Two characters in **George Eliot's** *Mill on the Floss* are buried in a vault near the entrance of the porch of St. James Church.

## Also recommended...



### E. The Fishnet

A traditional fish & chip shop with a full and varied menu with something to suit everyone. These guys make a big effort on Gluten Free Tuesdays with dedicated pans for white free, dairy free and soya free (but still crispy golden) fish and chips!

[www.thefishnetbulkington.com](http://www.thefishnetbulkington.com)

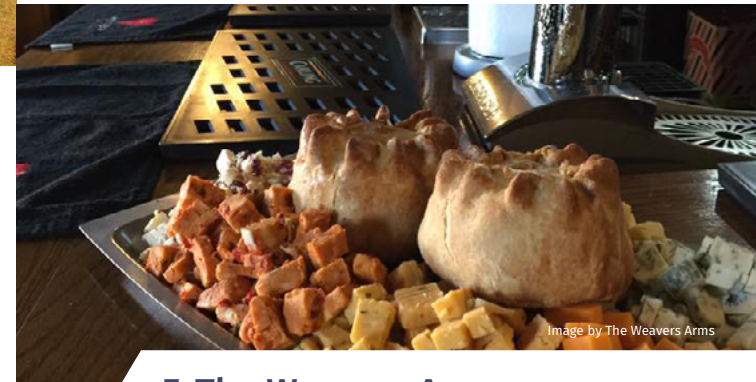


Image by The Weavers Arms

### F. The Weavers Arms

Traditional English pub with open fires, real ales, lagers, ciders, premium spirits and a range of cocktails. Featured in the 2021 CAMRA Good Beer Guide. (Bar snacks available too!)

[www.facebook.com/theweaversbulko/](https://www.facebook.com/theweaversbulko/)

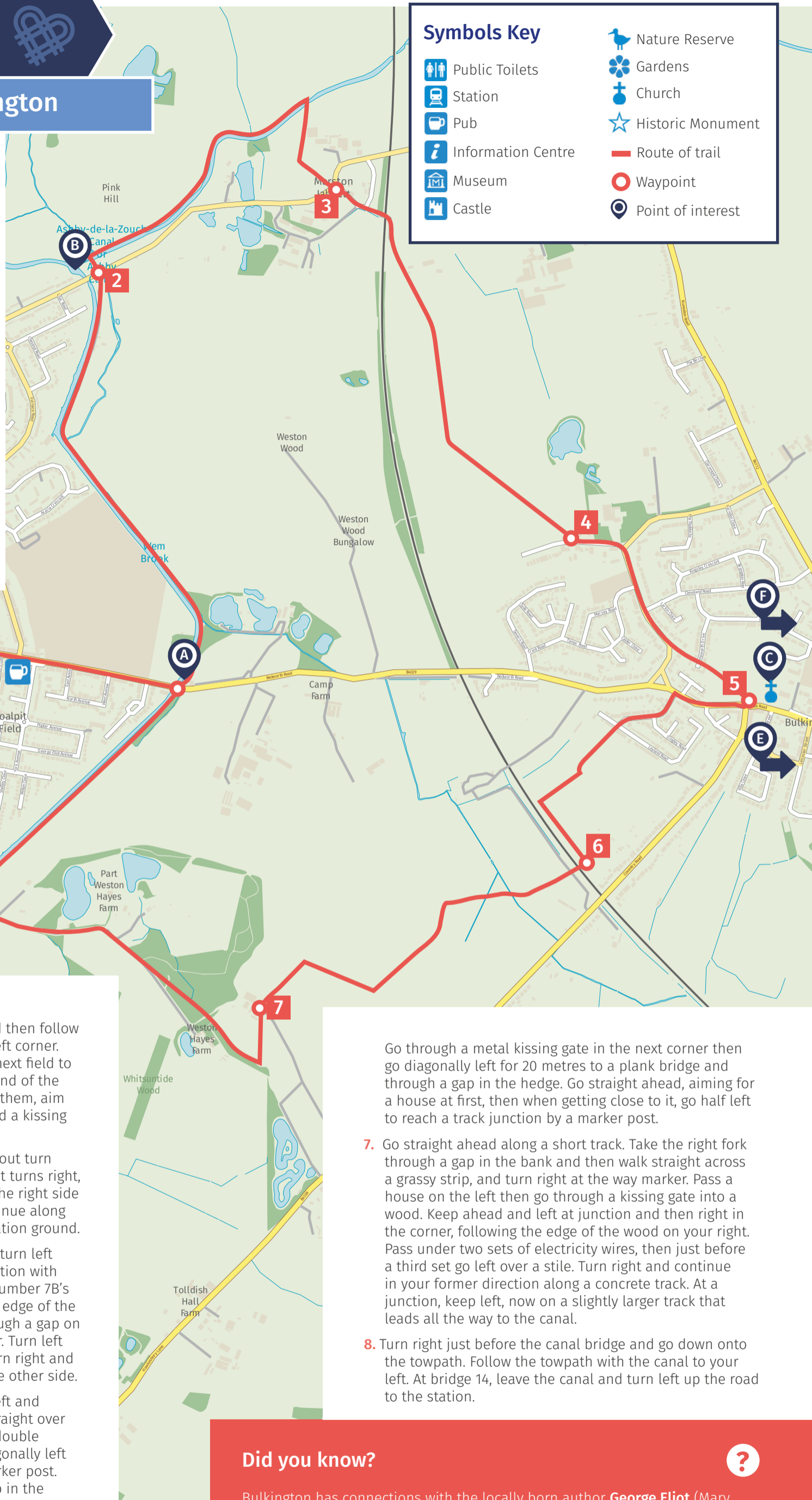


# RAIL Trails

## Bedworth to Bulkington

### Trail Directions

1. From the station, Turn left and follow the main road downhill. Immediately after crossing the canal turn left along the towpath as far as bridge 15 and Marston Junction.
2. Cross the bridge over the start of the Ashby Canal then immediately turn right along the towpath, with water to your right. Continue to bridge 3. Just before it, go through a hedge gap on the left, and up and over the bridge. Follow the farm track beyond. When it turns left through a metal gate into a farmyard, keep straight on and cross a stile next to an old gate. Keep straight on towards a modern red brick building and a stile leading onto the road. Be vigilant for traffic.
3. Turn left for 10 metres then right along the narrow Forders Lane. After a house, keep left then fork right along a dead end road that



ends at a lone house. Go through kissing gate ahead then follow left edge of a long field gradually uphill to the top left corner. Go through gap ahead and keep straight on up the next field to a marker post. Go half left here, aiming for the left end of the line of trees across the top of the field. On reaching them, aim towards the leftmost of the row of houses ahead and a kissing gate that leads directly onto a road.

4. Turn left along the road. On reaching a mini roundabout turn right and follow the pleasant suburban road. When it turns right, go ahead across a parking area to path starting on the right side of number 25A. Follow this to a road, cross and continue along the path on the other side, which reaches the recreation ground.
5. From car park, go onto the road and turn right, then turn left along Benn Road. Soon fork right and reach a T-junction with Leyland Road. Go left to a path starting just left of number 7B's garage. Go through a kissing gate and follow the left edge of the field. About three quarters of the way down, go through a gap on the left and turn right to continue to the field corner. Turn left and walk alongside the railway to reach a bridge. Turn right and go under the railway to reach a concrete track on the other side.
6. Take about 5 paces right along the drive then turn left and follow a hedge on your left to the next corner. Go straight over a footbridge over a ditch then diagonally right to a double plank bridge over another ditch. Cross it and go diagonally left across the next field to reach the far hedge by a marker post. Turn left and follow the hedge on your right to a gap in the corner. Go diagonally right to the far right corner of the next field. Go through a gap and follow the left edge of the next field.

Go through a metal kissing gate in the next corner then go diagonally left for 20 metres to a plank bridge and through a gap in the hedge. Go straight ahead, aiming for a house at first, then when getting close to it, go half left to reach a track junction by a marker post.

7. Go straight ahead along a short track. Take the right fork through a gap in the bank and then walk straight across a grassy strip, and turn right at the way marker. Pass a house on the left then go through a kissing gate into a wood. Keep ahead and left at junction and then right in the corner, following the edge of the wood on your right. Pass under two sets of electricity wires, then just before a third set go left over a stile. Turn right and continue in your former direction along a concrete track. At a junction, keep left, now on a slightly larger track that leads all the way to the canal.
8. Turn right just before the canal bridge and go down onto the towpath. Follow the towpath with the canal to your left. At bridge 14, leave the canal and turn left up the road to the station.

### Did you know?

Bulkington has connections with the locally born author **George Eliot** (Mary Ann Evans), who knew the village well. She is thought to have referred to it as Raveloe in her book *Silas Marner* (1861). The church of St James is where George Eliot's uncle and aunt are buried.

Want an online map?

Scan the QR code or visit [explore.osmaps.com](http://explore.osmaps.com)



Ready for another Trail?

Discover more at [www.heartcommunityrail.org.uk/railtrails](http://www.heartcommunityrail.org.uk/railtrails)

