

APRIL 2022

# Connect Day

*In partnership with CrossCountry and the Smallpeice Trust*

CRP Officer: Julia Singleton-Tasker



## Key Pillars:

- C. Bringing communities together and supporting diversity and inclusion
- D. Support social and economic development

## CRP Aims:

5, 8, 9



# Overview

## Concept and aims

The Heart of England Community Rail Partnership collaborated with CrossCountry to provide a railway careers day for young people, with guest appearances from representatives from across the industry. The aim of the day was to increase the awareness of engineering roles within the Rail Industry and the numerous pathways and opportunities that the railways have.

## What happened

On the 11th April, educational charity, the Smallpeice Trust brought along sixteen Arkwright engineering students to take part in the day which included hands-on activities, in depth talks about trains and engineering, and careers advice, giving the attendees the opportunity to ask anything about the industry.

**ENGINEERING AND THE RAILWAYS CONNECT DAY**

The Heart of England Community Rail Partnership and CrossCountry have collaborated on this Connect Day to educate and inspire Arkwright Engineering Scholars to consider a career in rail.

The Engineering and the Railways Connect Day will give Scholars the opportunity to learn more about the different pathways into the industry and the variety of engineering roles available. The day will include a mix hands-on activities, virtual tours, and multiple opportunities to talk with real rail industry engineers via live Q&A sessions.

**MORE INFORMATION**

**HOSTS** Heart of England Community Rail Partnership and CrossCountry  
**VENUE** North Hall, Spencer Yard, Leamington Spa, CV31 3JY  
**DATE** Monday 11 April 2022  
**TIME** 9:00 - 16:00  
**WEAR** Casual clothes

**APPLY NOW**  
Closes 27 March 2022

**PROGRAMME OF THE DAY**

09:00 Arrival and registration  
 09:30 Welcome and introduction  
 10:00 Live virtual tour of depots including Q&A  
 11:00 Group engineering activity  
 12:00 Lunch (provided)  
 13:00 Careers videos with a Q&A  
 14:45 Break  
 15:00 Group engineering activity  
 16:00 Conclusion

ARKWRIGHT.ORG.UK

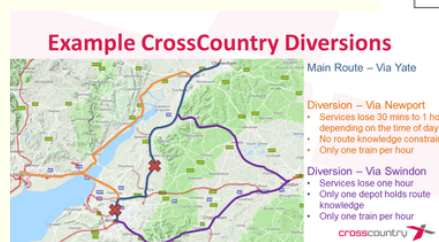
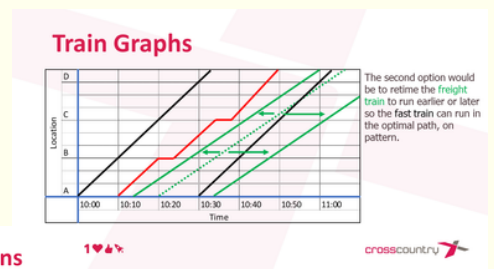
**ARKWRIGHT**  
engineered scholars



The day was held at North Hall in Leamington Spa, with CrossCountry's Head of Fleet and Engineering, Adrian Hugill, leading a talk about his trains and Chiltern Railway's Head of Production, Sam Sullivan, giving a virtual depot tour and talking about how they maintain their trains.

Community Rail Officer, Julia Singleton-Tasker gave the students a sustainable stations design challenge where students had to design and create an innovative, environmentally friendly station out of recycling. There was also a flash challenge that gave scholars 10-minutes to build a bridge out of paper that could hold a toy family

CrossCountry's Matthew Worsley, from the Diagramming team, led an activity where scholars could have a go at timing a train, providing an insight into how timetables are planned to move trains around the network.

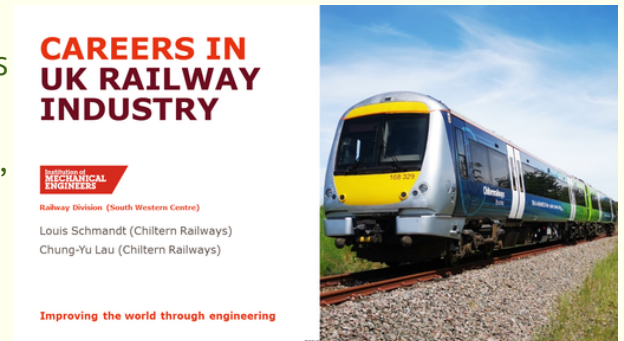




# Overview continued

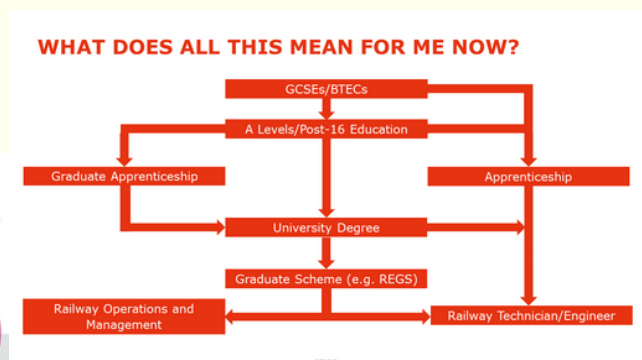
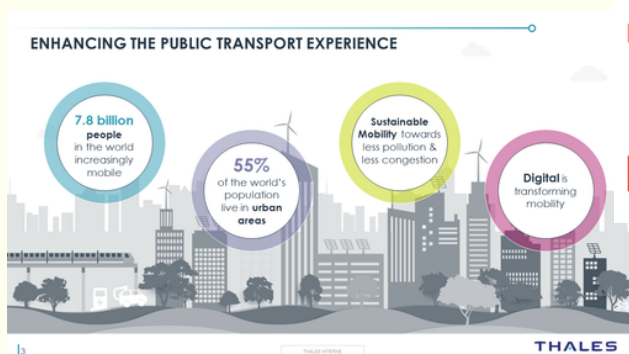
The afternoon consisted of careers talks with Q and A's with:

- Sean McCabe, Head of Software/Software Engineering Manager at Siemens – explaining his role and how it ties in with the rail industry
- Elizabeth Jackson, Customer Service Manager, CrossCountry Graduate – discussing her experience of the Graduate scheme and highlighting other roles within the rail industry
- John Chhetri, Voyager Fleet Engineer, CrossCountry – explaining his role and how he entered the rail industry
- Louis Schmandt, Technical Engineer and Chung Yu-Lau, Graduate Engineer, Chiltern Railways, talking about their roles and how they go into engineering in the railways
- Fiona Blow, Strategic HR Business Partner, Thales – discussing engineering opportunities at Thales and how Thales works with the railway industry.



Lunch was provided by Morning Sunshine Coffee who are based at Warwick and Warwick Parkway Stations and are a local independent business.

Julia Singleton-Tasker, Heart of England Community Rail Officer said, "It's so important to engage and inform students about the opportunities that are open to them within the rail industry. It was a real pleasure to work with CrossCountry and the Smallpeice Trust on bringing together rail industry partners from Chiltern Railways, Thales and Siemens for our Connect Day in Leamington."







# Feedback

All the students enjoyed the event with all of them saying they learnt something new and many of them saying that they'd like to do something like it again and the Heart of England CRP is now looking to hold annual Connect days for Arkwright Scholars with more industry partners.

## Feedback from speakers:

Many thanks indeed for arranging such a splendid event - *David Jones*

Thank you very much for inviting me to take part on Monday, it was brilliant to see so many of the scholars engaged and interested.

Very happy to help out with any future Connect Days going forward. – *Elizabeth Jackson*

Thank you for the feedback. I enjoyed it very much, especially the Q&A... Chiltern and myself would definitely be interested to support similar events or support in another ways be it directly/indirectly. We also now have a good cache of Audio/visual items that we can diversify and grow depending on the audience. Looking forward to the group feedback to see how we can improve it. – *Sam Sullivan*

Thank you for your kind email, going forward I would be more than happy to support you with other engineering career related initiatives. – *Adrian Hugill*

Thank you for hosting the Connect Day yesterday, I think the Scholars got some great insight into engineering and the variety of options available to them in the rail and transport sectors. – *Sarah Casey, AES Events & Administration Coordinator, The Smallpeice Trust*





# Costs

ITEM AND COMPANY	COST
Hall Hire and projector <i>Heartbreak Productions</i>	£140
Lunch and Refreshments <i>Morning Sunshine</i>	£148.50

All the speakers generously gave their time and expertise for free.

<b>TOTAL COST</b>	<b>£288.50</b>
-------------------	----------------

## With thanks to...

