



Image by Warwick Castle

RAIL Trails



Warwick Circular Walk

Explore the towers and spires of Warwickshire's county town! Set on the River Avon, this historic market town is full of medieval, Georgian and Victorian architecture and graced with beautiful gardens and parks, crowned by its world famous **Warwick Castle** – the ancestral home of the Earls of Warwick.

On this trail you'll pass some of Warwick's key sites. As well as the **Castle** you'll see the **Collegiate Church of St. Mary's**; the timber-framed buildings of the **Lord Leycester Hospital**; the **Market Hall Museum** and the **Guy's Cliffe Estate**. You'll also follow part of the River Avon and the Grand Union Canal - the longest canal in England.

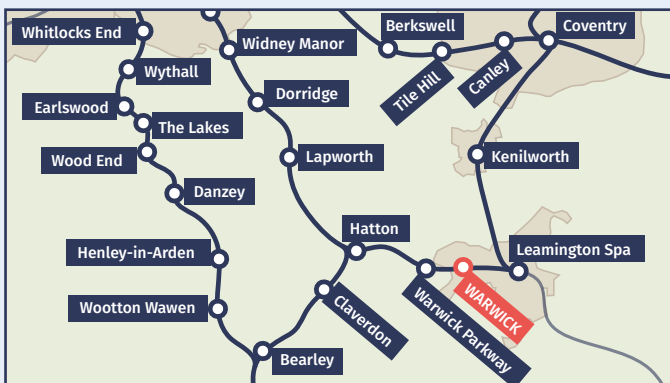
Warwick has a great choice of eateries (you'll want to spend some time exploring around Old Square and Market Place). Don't miss Smith Street, Warwick's oldest shopping street with many interesting shops such as the **Smithery** and the **Golden Tea Monkey**.

Further Information:



Visit www.visitwarwick.co.uk for more information on where to visit and what to see in town.

www.shakespeares-england.co.uk provides everything you need to know for a visit to the wider area.



Warwick is on the mainline between Birmingham Snow Hill and London Marylebone as well as to Stratford-Upon-Avon, Leamington and Kidderminster.

Trains run hourly to all stations on the Stratford branch as well as more frequently to stations between Warwick Parkway and Birmingham via Solihull.

There are limited facilities available at this station, but Warwick is only a short stroll away...

Want More?

This is just one of a range of 36 self-guided walks from railway stations in Warwickshire, Coventry and Solihull.



Discover the Heart of England by rail at: www.heartcommunityrail.org.uk/railtrails



Design by: www.blackspiraldesign.co.uk



RAIL Trails



Discover The Heart of England by Rail



Warwick

Image by Tom Podmore



4 Hours



7.8 Miles



Moderate

Start: **Warwick** Finish: **Warwick**

Explore Warwickshire's historic county town and its world famous Castle as you wander along the banks of the River Avon.

www.heartcommunityrail.org.uk/railtrails



Trail Highlights...



Image by Milan Didi

A. Pasteleria Portuguesa

Stock up near the start of your walk with Portuguese treats. The best coffee and highest quality Portuguese cakes and pastries, made daily on site by expert bakers. Delicioso!

www.pastelariaportuguesa.co.uk



Image by DeFacto

B. Guy's Cliffe Estate

Dating back over a thousand years, the historic estate includes Guy's Well, the Walled Garden (open to public on certain days), Gaveston's Cross and the Saxon Mill pub (perfect for a halfway pint).

www.guyscliffewalledgarden.org.uk
www.saxonmill.co.uk



Image by Jules & Jenny

C. Colegate Church of St Mary

Hard to miss as its one of the largest churches in Britain! People have worshipped on this site for over 1,000 years. If open, make sure to climb the 134 foot tower for stunning views of the town, the castle and beyond.

www.stmaryswarwick.org.uk



Image by Coventry City Council

D. Warwick Castle

Just about the perfect fantasy medieval castle! Warwick is the ancestral home of the Earls of Warwick and covers 64 acres of battlements, towers, dungeons, stately rooms and gardens

www.warwick-castle.com

Did you know?



Warwick is one of England's smaller county towns. This is because it was hardly touched by the industrial revolution, although its population has more than doubled since the 1960s.

Also recommended...



Image by Mark Wordy

E. Mill Garden

For that instagrammable moment don't miss the Mill Garden, renowned for the quality of its planting and breathtaking position on the banks of the River Avon, lying beneath the walls of Warwick Castle.

www.visitwarwick.co.uk/the-mill-garden/



Image by Art Fund

F. Market Hall Museum

Wondering about the history of Warwickshire? Well wonder no more, just step into the Market Hall, a 17th-century landmark in the heart of Warwick. Here you'll find displays on the geology, natural history and early history of the county.

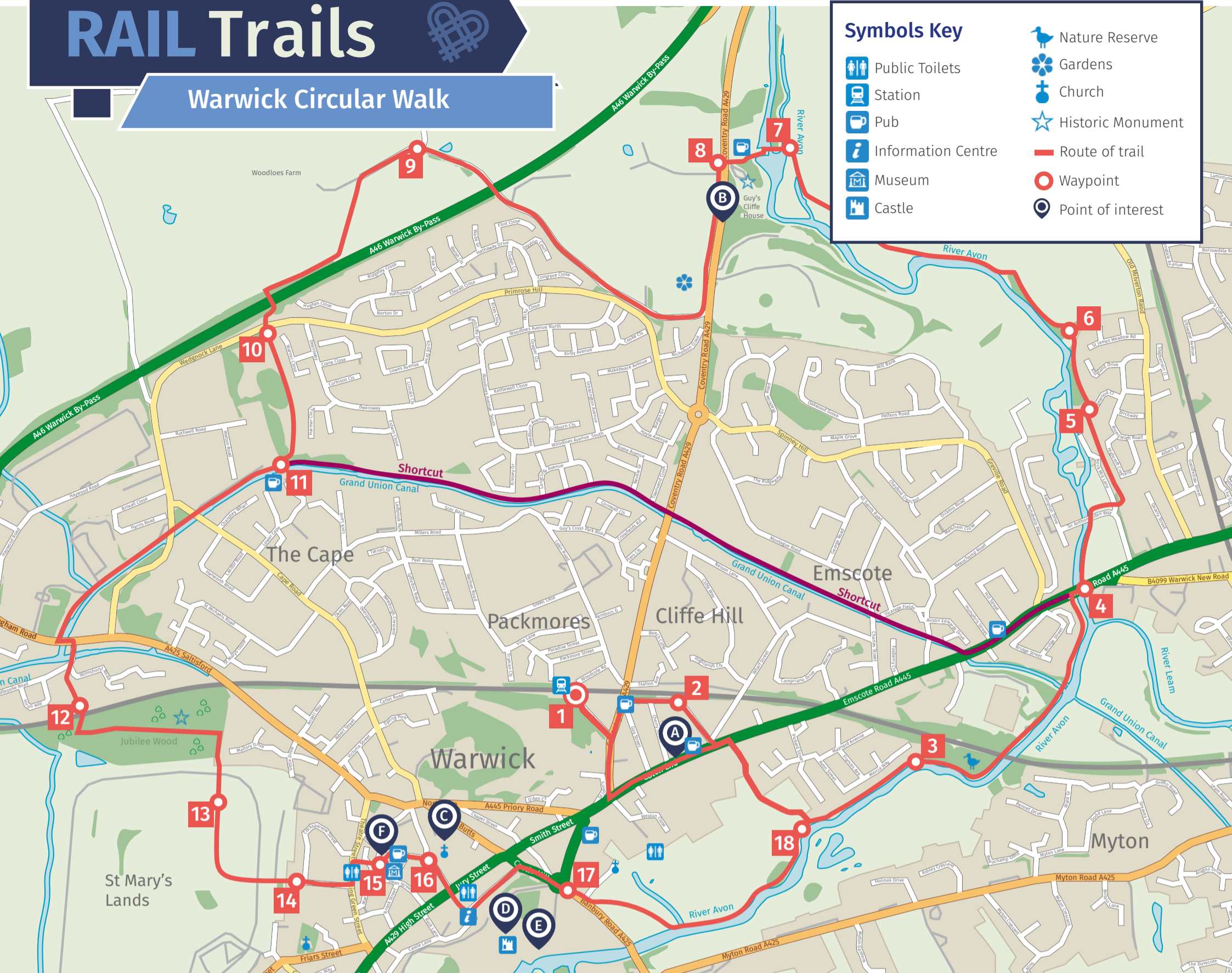
www.visitwarwick.co.uk/market-hall-museum/

RAIL Trails

Warwick Circular Walk

Symbols Key

	Public Toilets		Nature Reserve
	Station		Gardens
	Pub		Church
	Information Centre		Historic Monument
	Museum		Route of trail
	Castle		Waypoint
			Point of interest



Trail Directions

- Exit station onto Station Road. Turn left onto Coventry Road then right passing The Railway onto Guy's Cliffe Terrace and ahead into Broad Street.
- At junction, cross into Emscote Road. Ahead down paved, then tarmac path onto winding path towards river bridge. At boathouse on right, bear left across grass/tarmac path until reaching path close to River Avon (river on your right).
- Keep ahead on path under railway bridge and canal bridge (aqueduct). Keep ahead on path to cross footbridge. Continue ahead and then bear left up path/steps after Flats. Turn right, ahead through gap to pavement and river bridge.
- Cross bridge, turn right down concrete steps and right under road bridge, river now on left. Ahead on path under next road bridge. Immediately turn right on path and then left through gate. Continue ahead to signpost Saxon Mill Walk.
- Turn left up path between gardens. Emerge into open area. Ahead on path between bushes to concrete path. Turn left to cross footbridge.
- Bear left up steps to field and ahead with river on left. In 250m, turn left downhill to river. At bottom, turn right, passing pylon. In 200m left through kissing gate.
- Cross footbridges to Saxon Mill. Turn left through gate. Turn right through tables. See working water wheel on right. Ahead through bollards to main road.
- Cross road and turn left on pavement for 450m. Turn right into Woodloes Lane. Ahead for 1 km, crossing A46 bridge, then fork left towards Woodloes Farm.
- In 175m (waymark post), bear left across field. At far side, turn right through gateway. In 50m, turn left through kissing gate. Ahead under A46 bridge and through old gateway. Immediately turn right across road to Twycross Walk sign.
- Ahead on tarmac path through green with blocks of flats on left. Where path bends left, ahead onto Stanton Walk. Where path bends left, bear right across grass, up steps to Grand Union Canal.
- Turn right on towpath past The Cape of Good Hope pub. Immediately before bridge, right up ramp to cross road. Turn left, over canal bridge, and right into Budbrooke Road. Cross canal bridge and ahead crossing road to Public Footpath.
- Ahead on path and cross railway bridge. On reaching Jubilee Wood, turn left & on main path through wood. At end of wood turn right uphill. Through kissing gate into St Mary's Lands. Ahead cross racecourse and path through golf course.
- In 300m, at track crossing, turn left on track, passing club house. Ahead crossing path & racecourse to car park. Continue ahead on tarmac path, to end of road.
- At junction (Linen Street), turn left then right across road to arch (Warwick Market Place). Ahead up steps to Randolph Turpin sculpture & Market Hall Museum.
- From Museum, go up pedestrian area towards new Shire Hall & Warwick Library. Turn right into Old Square & ahead to St Mary's Church
- Turn right down Church Street. Ahead into Castle Street. Pass Tourist Info Centre on left and left into Castle Lane. At junction, turn right downhill to roundabout. Passing main entrance to Warwick Castle, cross Mill Street.
- Turn right & cross access road to St Nicholas Park. Turn left through gap in fence. Bear right across grass & paths to River Avon. Turn left across bridge over brook. Ahead on path, river on right, for 550m. Pass boathouse on left and up steps
- Turn left on winding tarmac path. Ahead to cross Emscote Road. Turn left & ahead to turn right up Coventry Road, then left into Station Road to station.

Did you know?

J. R. R. Tolkien seems to have been very influenced by Warwick and may have modelled both Edoras and Minas Tirith on the town! Interestingly some aspects of the plot of *The Lord of the Rings* are also paralleled in the romance known as "Guy of Warwick".

Want an online map?

Scan the QR code or visit explore.osmaps.com



Ready for another Trail?

Discover more at www.heartcommunityrail.org.uk/railtrails

