

OCTOBER 2021

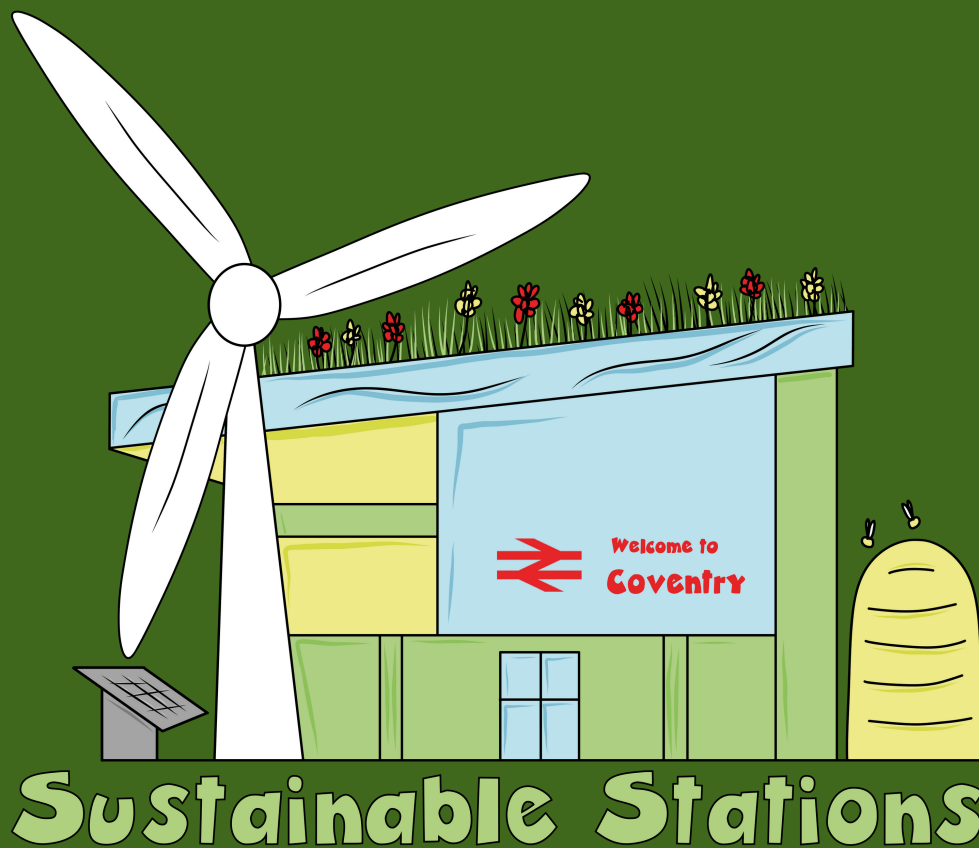
Heart of England || Community Rail Partnership



Sustainable Stations

In partnership with Coventry Transport Museum

CRP Officer: Julia Singleton-Tasker



Key Pillars:

- A. Providing a voice for the community
- B. Promoting sustainable healthy and accessible travel
- C. Bringing communities together and supporting diversity and inclusion
- D. Support social and economic development

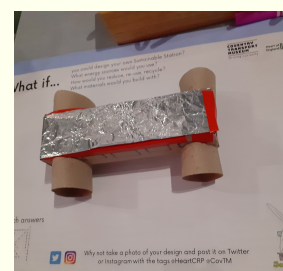
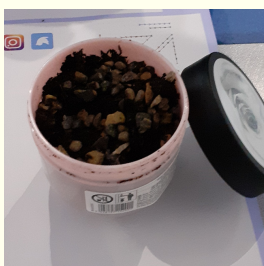
CRP Aims:

1, 2, 3, 5, 6, 7, 8, 9

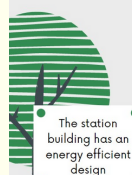


Overview

As part of our Community Rail Week activities, and in the lead up to COP 26, we wanted to work with families and young people to educate and develop ideas about sustainability and how our stations can become more sustainable. These workshops were developed so they could be repeated as part of Coventry Transport Museum's Made in Coventry workshops and so they could be used in the Heart of England CRP's ongoing education programme. We aim to embed these sessions as a consultative approach to inform our own practice and improvements of our public spaces.



Newport Station, Wales



- Rainwater harvesting has been incorporated on both the north and south terminals and the collected water is stored in tanks for use in toilets
- The building has an ETFE (Ethylene tetrafluoroethylene) membrane that soaks up natural daylight and reduces energy consumption



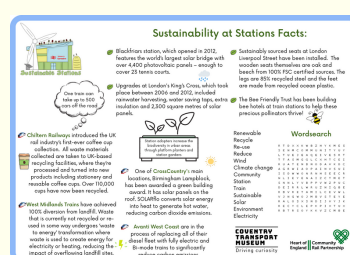
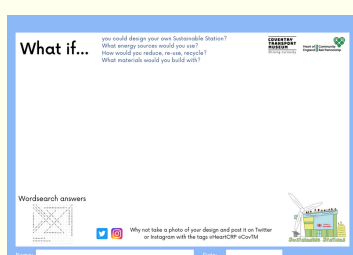
Goals/Objectives

- Increasing local community engagement with the railway station.
- Raising awareness of sustainability.
- Engaging young people with the railways.
- Providing a voice for the community.
- Helping to inform TOCs and the CRP as to what the public wants to see at stations to make them more sustainable. This can feed future projects.
- Educating families about the importance of rail safety and how to keep safe around stations.



Approach

We approached a local graphic designer, Katie Jones to create our logo and poster, using Coventry Station as the inspiration. On Saturday 23rd October, in partnership with Coventry Transport Museum, we hosted a Sustainable Stations Drop In Session for families in the community room at Coventry Station. and located in the 'Our Future Moves' exhibition space at the museum. The session was free of charge and staff at the museum signposted visitors to us. We created resources to show public buildings that had embraced sustainable practices and a worksheet with facts about how the railway industry in the UK is becoming more sustainable. Families were able to use these resources to create their own Sustainable Station out of recycling. They could also draw their design on the worksheet, which had questions prompts to aid them in their design concept. Families were able to create their own station garden to take home. Using recycled butter tubs, takeaway boxes etc, they filled their containers with soil and had the choice of different seeds and bulbs to plant, before popping the lid on so they could transport it home without spillage.





Ongoing partnership

We are planning more Sustainable Sessions at Coventry Transport Museum in 2022 and we are working with the Coventry Museums Learning Team to adapt the sessions into set lessons that can be offered in schools.

"Working together with CRP on the Sustainable Stations workshops has opened up new ways to think about transport and how transport is evolving. The workshops, and partnership, are a perfect opportunity to add to the Coventry Transport Museum's story of transport as well as bringing the Museum's story and family workshops out into Coventry's community."

Anja Keitel-Campsall
Learning Officer - Families
Culture Coventry / Coventry Transport Museum

With thanks to...

Coventry Transport Museum for collaborating with us on this project and for providing the venue for the workshop.

Veena Kumari from Young Rail Professionals for volunteering to help at the workshop and for building her own fantastic Sustainable Station.

All the staff at Coventry Transport Museum for welcoming us into their space and for their support during the day.

**COVENTRY
TRANSPORT
MUSEUM**

Driving curiosity

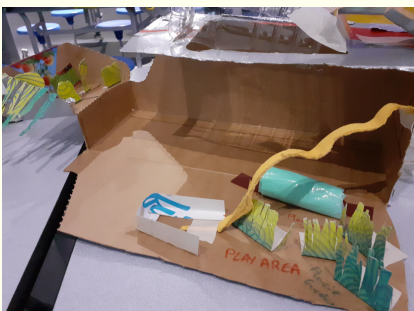


**YOUNG RAIL
PROFESSIONALS**



Items Sourced

ITEM AND COMPANY	COST
2x Community Learning Assistants	£200
Coventry Transport Museum Family Learning Officer	£150.00
CRP Officer	£0.00
Venue Hire - CTM match funded cost	£0.00
Resources for making - Various	£71.26
Design of posters/logos - Katie Jones Art Studio	£240.00
Printing of Posters/Resources - WCC	£94.00
TOTAL COST	£661.26



Feedback

