

At the Heart of England Community Rail Partnership, we recognise that environmental protection is one of the most important issues facing the world today. We're committed to working in environmentally sustainable ways, applying the principles of sustainable development for the benefit of current and future generations, both locally and globally.



We will be mindful of sustainability principles and strive to reduce the environmental impact of our activities.



We will work with partners to increase biodiversity at our stations.



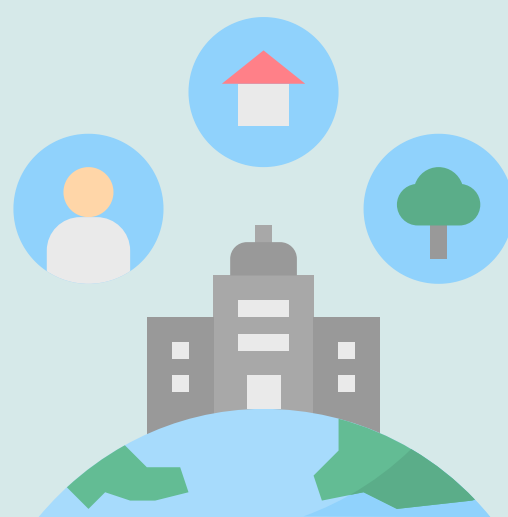
We will reduce the amount of waste we produce by reducing, reusing and recycling items whenever possible.



We will source items and resources from local independent businesses and organisations when reasonably possible.



We will encourage CRP Officers and partners to apply sound sustainability practices at home and within the wider community as well as at work.



We will promote the benefits of the railway and how it helps individuals to lead a more sustainable life.



We also work to raise awareness of environmental issues and the need to move towards a more sustainable future among partners and other stakeholders. To this end we encourage sustainability research and education, through workshops, education programmes and collaborative work with community partners.