



# Railway Safety





# Journeys

**Chilternrailways**  
by arriva

Who has been on a train  
before?

Where have you been to?

Who did you go with?



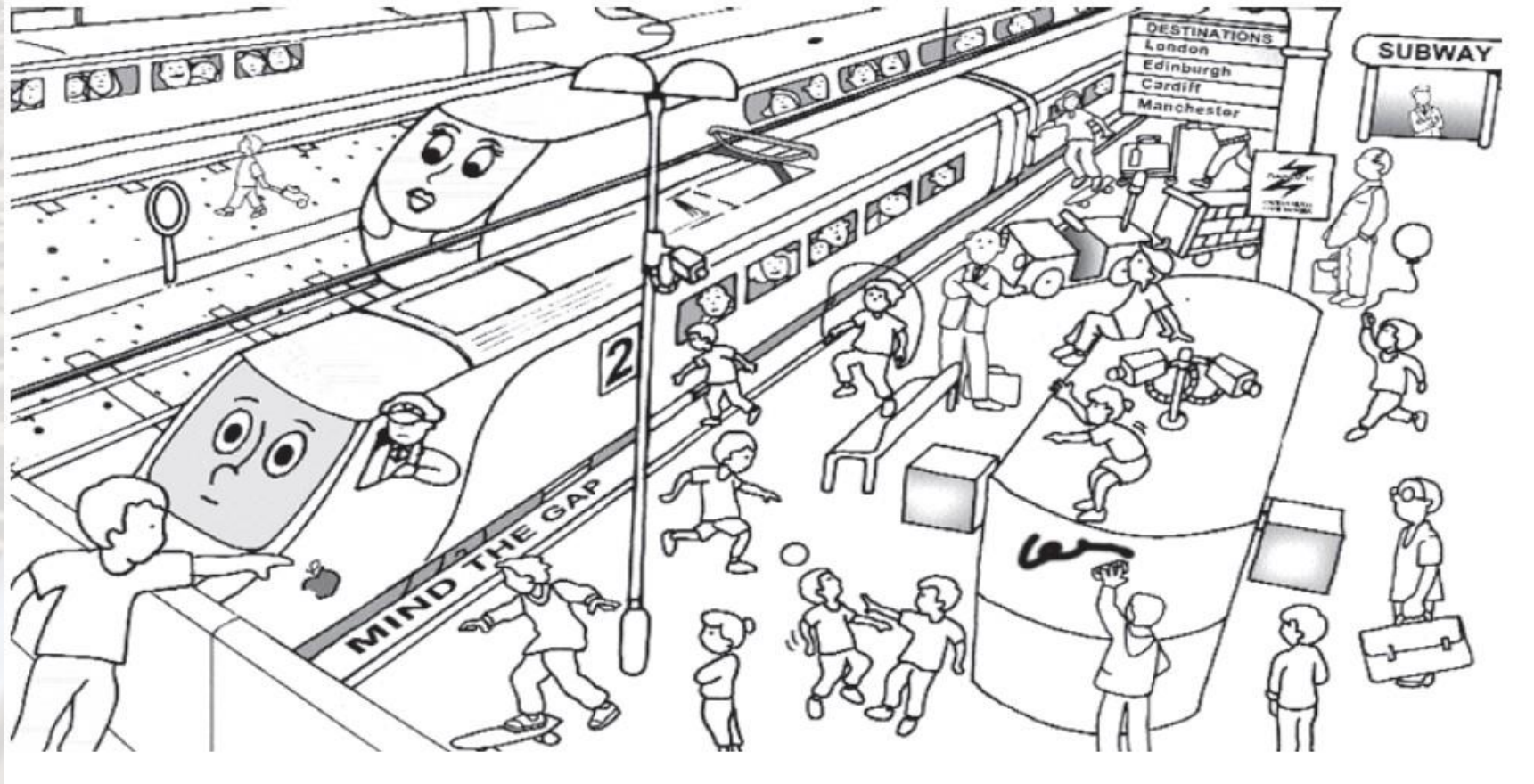




# Rail Safety Video



# Spot the Hazard





Heart of  
England | Community  
Rail Partnership



# Electricity

**Chilternrailways**  
by arriva



More and more railways are now using electric trains as it means a more quieter, reliable service and it's better for the environment! However, it is extremely dangerous! 9/10 people that come too close to live wires and tracks die.





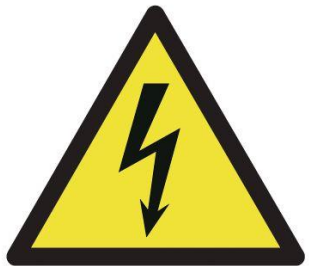
Heart of  
England | Community  
Rail Partnership



**Chilternrailways**  
by arriva



The rail next to the track has 750 volts running through it . Overhead power lines carry 25000 volts – that is 100 times greater than the power supply in your home. The electricity can even jump so you don't necessarily have to touch the live wires and rails to be injured.



**Danger**  
Overhead live wires





Where are  
the four locations  
electricity can be  
found on the railway?

Turn to your partner  
and see if you can  
work out where they  
are.

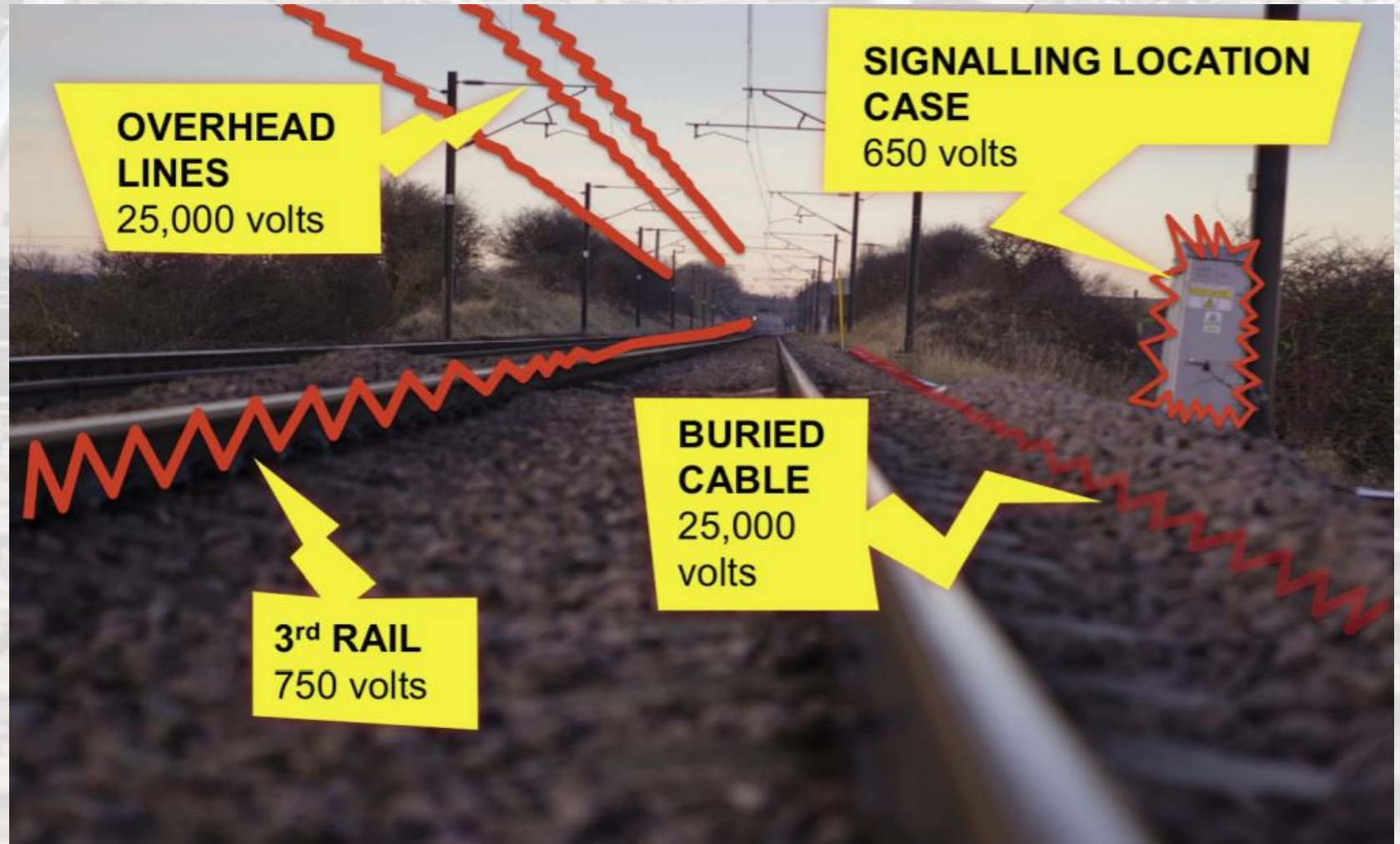






Remember:  
Electricity on the  
railway is never  
switched off!

Why should you  
never fly a kite or  
balloon near the  
track?





Heart of  
England

Community  
Rail Partnership



# At the station

**Chilternrailways**  
by arriva







# On the train

**Chilternrailways**  
by arriva





# Level Crossings



A level crossing is where people and vehicles can cross the track safely. If the barriers are closed, you hear an alarm or see flashing red lights this means a train is coming – do not cross! Once the train has passed, you must wait for the barriers to lift and alarm and lights to stop before you cross. Walk, don't run. Get off your bike and stay alert!



Heart of  
England | Community  
Rail Partnership



# Trespassing

**Chilternrailways**  
by arriva



**Never** play on railway tracks – you are putting your life in danger!

Unlike cars which have steering wheels, trains cannot steer out of your way.

If you trespass on the railway you could end up with a £1000 fine – or even worse, you could lose your life!





# Vandalism



Trespassing on the railway to graffiti is against the law and dangerous. Many people have died doing so.

Throwing rocks at trains could kill or harm not only the driver, but also the passengers too.

You will face severe consequences – eg go to prison- for throwing objects at a train or putting them on a track.

