



JULY 2021

Safer Schools - Rail Safety Video

In partnership with Chiltern Railways

CRP Officer: Julia Singleton-Tasker

Funded by: Chiltern Railways



Key Pillars:

- B. Promoting Sustainable healthy and accessible travel
- C. Bringing communities together and supporting diversity and inclusion
- D. Support social and economic development

CRP Aims:

1, 5, 6, 8, 9



Goals/Objectives

- Produce a Rail Safety video that could be used on it's own or in conjunction with the CRP's Rail Safety Lessons.
- Work in collaboration with Network Rail and the BTP to ensure video content is technically accurate and appropriate for the target age groups.
- Produce lesson plans and resources for Key Stage 1 and 2.



Background

With the number of trespassing incidents on the railways increasing over lockdown, there is a more urgent need to educate young people as to the dangers of not staying safe on the railways. Chiltern Railways approached the Heart of England CRP to work in partnership with them on a rail safety video that could be used by both organisations as part of their Rail Safety talks and lessons in primary schools. The CRP was already working on Rail Safety Lessons for KS1 and 2 and had resources and presentations to use and adapt from Community Rail Lancashire.

Chilternrailways
by arriva



Approach

Chiltern Railways approached the Heart of England CRP to partner with them on this project and, after reaching out to several companies, we decided to work with filmmaker Jam-AV. Leamington Spa was the ideal location for the filming as it was central to all involved and it is central to the CRP area. The video was filmed over a couple of days and had additional input from the British Transport Police and Network Rail. We wanted the video to be able to hold children's interest and to encourage discussions around rail safety, therefore we chose to film an interview-style video with the fantastic Dylis and Jude being the interviewers.

As the video was filmed at Leamington Spa Railway Station, we wanted to launch the video at a school close to to the station, so we asked Kingsway Community Primary School if we could teach our rail safety lesson with the video to their Year 5 class. Julia Singleton-Tasker from the Heart of England CRP and Victoria Pond, HSSE Manager - Security for Chiltern Railways, delivered an online lesson previewing the video to the class.



To thank Kingsway Community Primary School for being our launch school, we invited 5 of the Year 5 students, with their teacher, to come to Leamington Spa Station for a tour of the Friends of Leamington Station garden and to be in a photo for the project press release. Chiltern Railways have offered the class a free rail pass that can be used over the next year for a class excursion and the school are keen to work with Chiltern and the CRP on future projects. Kenilworth Books curated a selection of fiction and non-fiction train-themed books, funded by the Heart of England CRP, for the school library and they were delivered by the CRP Officer in July.

The rail safety video will continue to be used with schools in communities, delivered by Chiltern Railways and the Heart of England CRP and it will also be available, with additional lesson resources, from Chiltern Railways or the Heart of England CRP website, for schools to download and use themselves.



Items Sourced

ITEM AND COMPANY	QUANTITY	COST
Video production costs <i>Jam-AV</i>	998	£3,100
Books for Kingsway Community Primary School <i>Kenilworth Books</i>	25	£140.05
Class Rail Pass <i>Chiltern Railways</i>	1	£0

TOTAL COST

£3,240.05

CONTRIBUTIONS

Chiltern Railways - £3,100.00
Heart of England CRP - £140.05

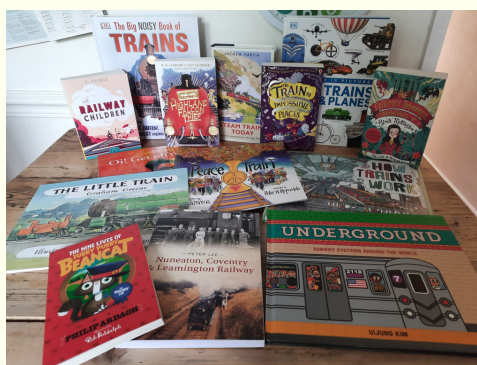
Feedback

Alex Atkinson, teacher at Kingsway Community Primary School said “We are delighted to have been the first school in the region to benefit from this rail safety programme. Pupils were really engaged with the content and learned vital lessons on how to stay safe on the railway. The programme also highlighted to our pupils the opportunities for travel outside their immediate communities, something many families may not have the opportunity to experience.”

Media

- Press Release [CRP website](#)
- [Community Rail Network Article](#)
- [Article in Rail Business Daily](#)
- [Resources](#)

The press release will be in the October/November issue of Your Call Magazine, who have a distribution list of 110,000 homes in Coventry, Solihull and Warwickshire.



With thanks to...

Chiltern Railways for approaching us to work with them on this project.

Jam-AV for producing a high quality video and for their professionalism throughout.

Jude and Dylis for being excellent interviewers.

Network Rail and the British Transport Police for their collaboration, support and advice.

Community Rail Lancashire for sharing their education knowledge and resources with us.

Kingsway Community Primary School for trialling the rail safety video and lessons.

Kenilworth Books for researching and sourcing amazing of train-themed books.

Chilternrailways
by arriva

