

# Railway Safety





# Journeys

Who has been on a train before?

Where have you been to?

Who did you go with?







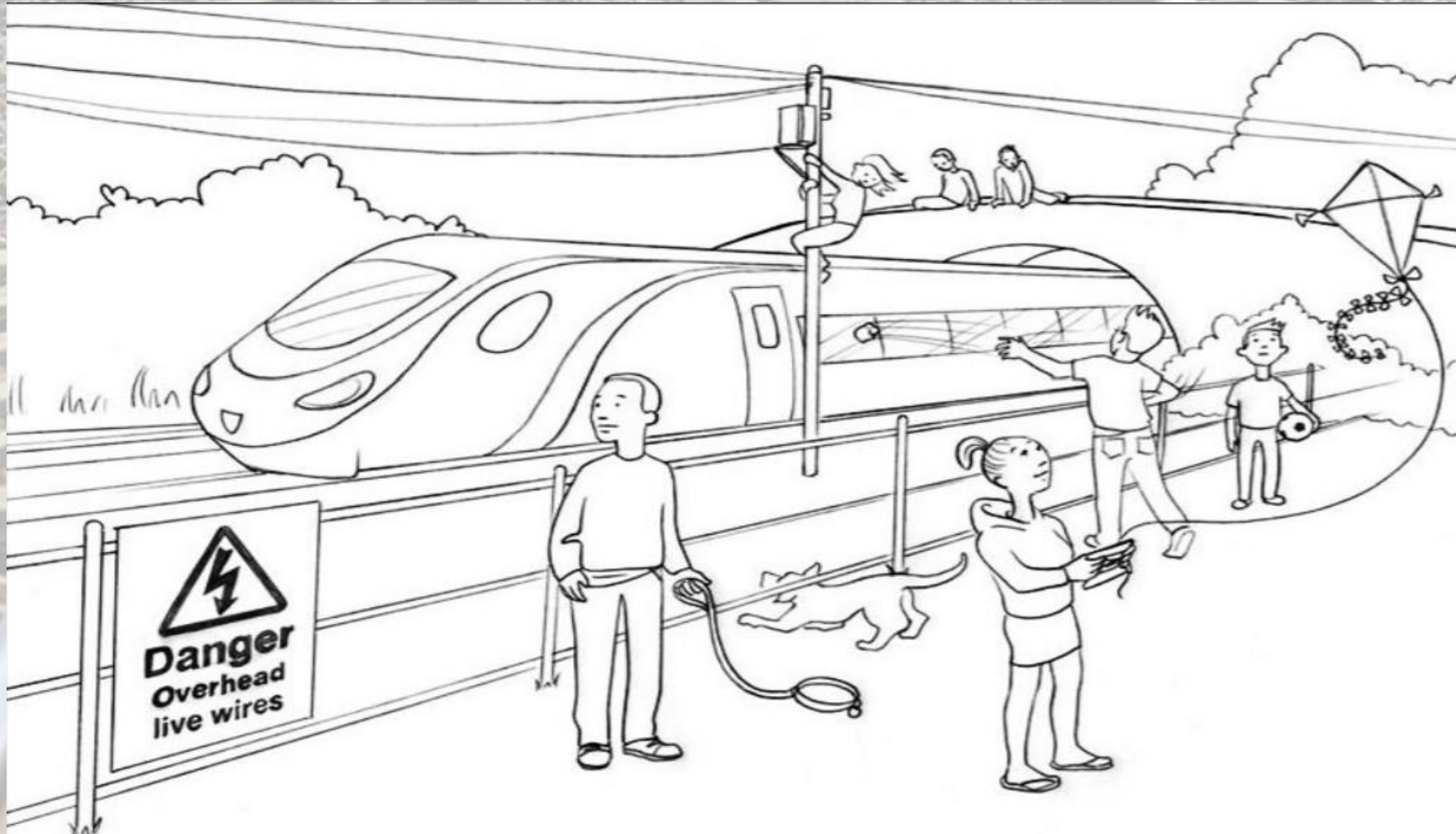
A train is the safest form  
of land transport

8 times safer than  
travelling by road!





# Spot the Hazard





# Electricity



Some trains are powered by electricity.  
The rail next to the track has 750 volts running through it.  
Overhead power lines carry 25000 volts – that is 100 times greater than the power supply in your home.



Where are  
the four locations  
electricity can be  
found on the  
railway?

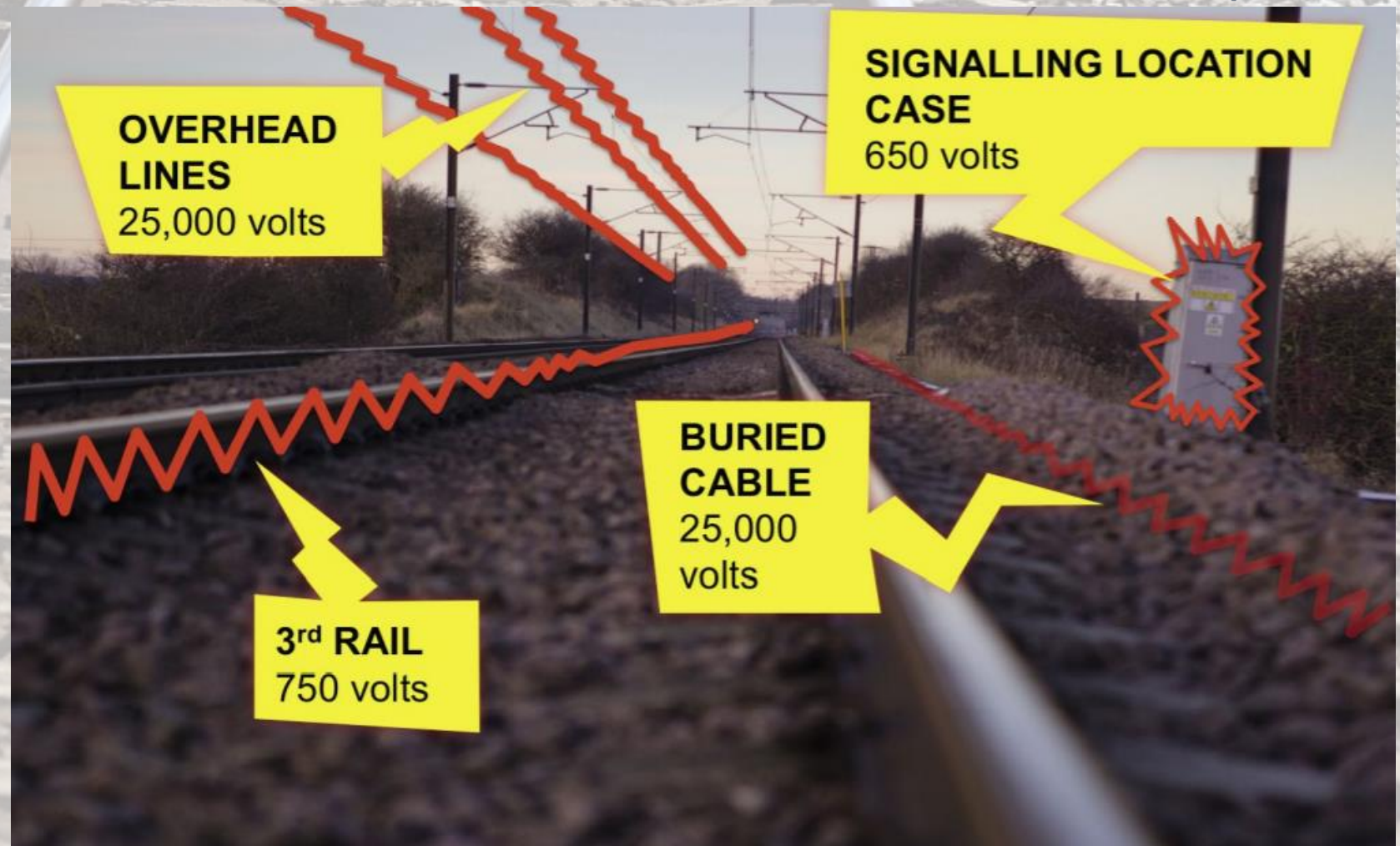
Turn to your partner  
and see if you can  
work out where they  
are.





Remember:  
Electricity on  
the railway is  
never switched  
off!

Why should you  
never fly a kite  
or balloon near  
the track?





# At the station

**Chilternrailways**  
by arriva





# On the trains





# Level Crossings



A level crossing is where people and vehicles can cross the track safely.

Some have lights, barriers and alarms. You must only cross when the barriers are up. Others are just a footpath across the track – on quieter parts of the railway.



# The Train Ride