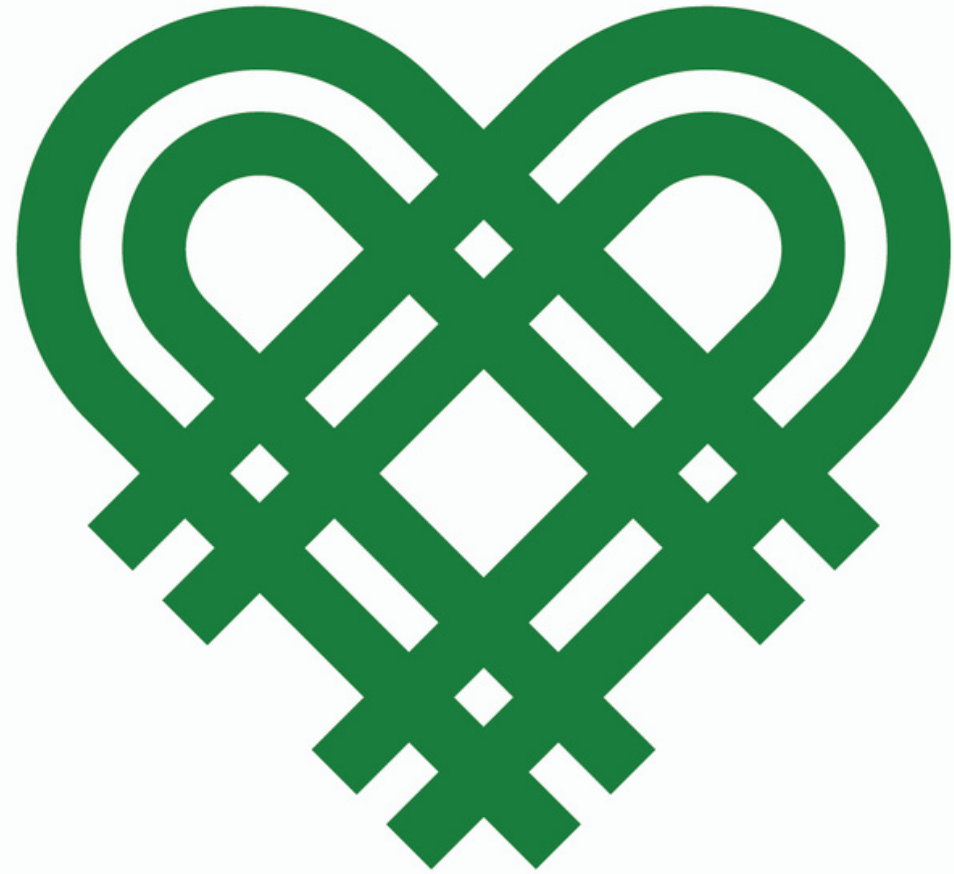




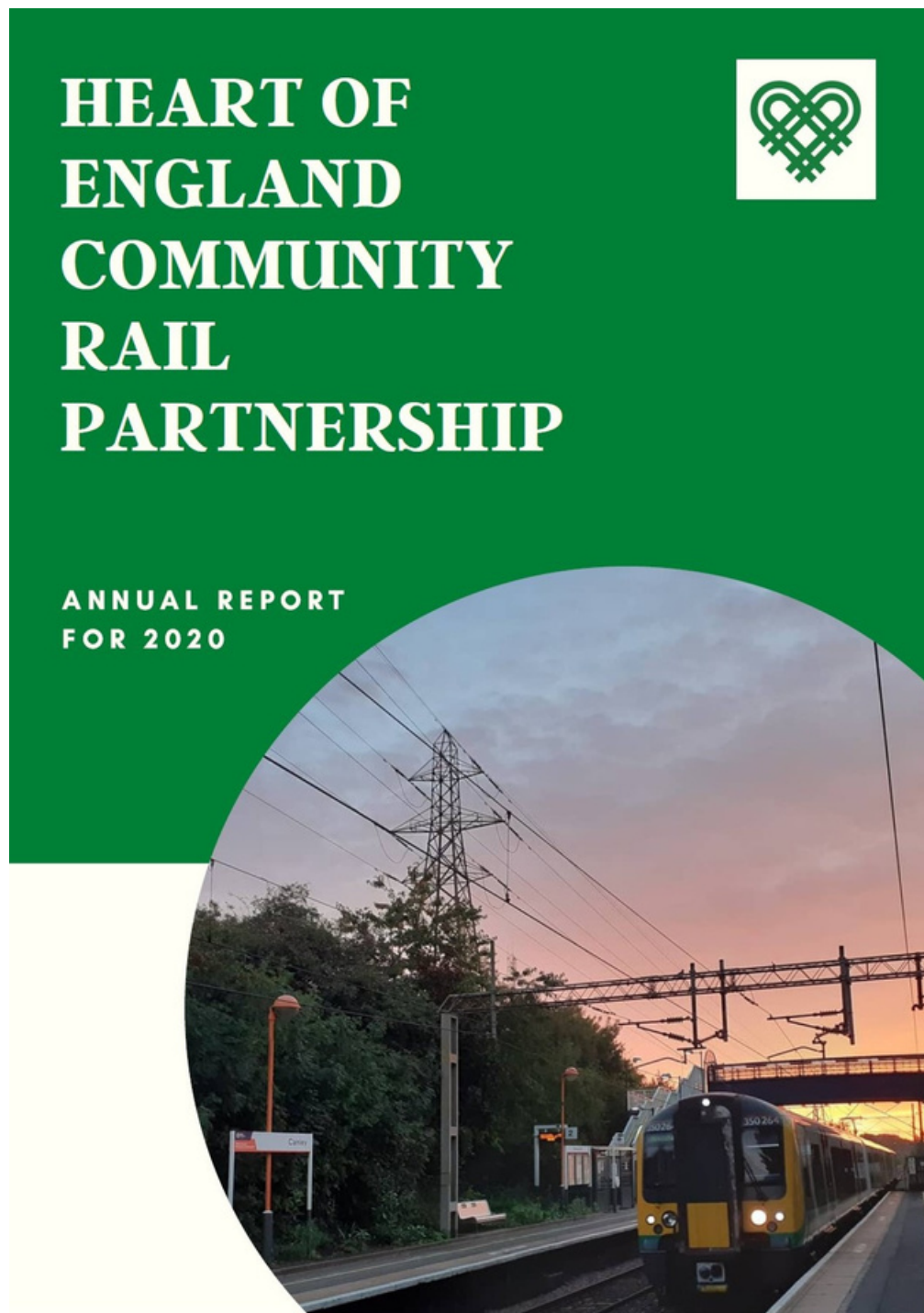
Welcome to our AGM.

This event will start shortly so now's the time to grab a cuppa, get yourself comfortable and settle yourself in for a morning of Community Rail.



Our First Year

# Annual Report



## ABOUT US

Community Rail is about integrating stations into their communities and finding out how the railways can best socially and economically support the areas they serve. The Heart of England CRP covers 36 stations over 3 lines and serves a diverse range of stations, from rural request stops to larger urban stations. The partnership launched in 2019 with the first CRP Officer coming into role at the start of 2020.



The partnership is formed of 11 principal partners and funders:

- Coventry City Council
- Solihull Metropolitan Borough Council
- Stratford-on-Avon District Council
- Warwickshire County Council
- Warwick District Council
- Avanti West Coast
- Chiltern Railways
- CrossCountry
- West Midlands Railways
- Vintage Trains
- West Midlands Rail Executive

The CRP Officer is Julia Singleton-Tasker.

Network Rail and the Community Rail Network support the work of the partnership

The CRP would like to thank all its partners for their contributions and continued support in 2020 to make this partnership a success.



## PROJECTS SUPPORTED



The Heart of England Community Rail Partnership has been a proud supporter of the Backtrack Anti-Trespass Campaign that ran over the Summer of 2020. This was a competition aimed at 11-18 year olds to inform people of the dangers of trespassing on rail tracks. Entrants were asked to create a storyboard, song, script or film and to share it with their peers. The Heart of England CRP provided the prize for the best film and had the pleasure of judging one of the categories.



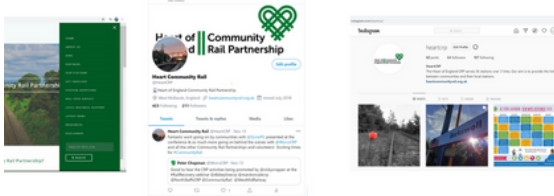
## PROJECTS

Work moved online, we were pleased to be included on the Community Rail Network's regular Webinar to talk about Positivity and Social Media. It was also an honour to be invited to the Chiltern Railways Stakeholder Conference in November.



### social media accounts

The industry has been heavily affected by COVID-19, we've had to re-evaluate our approach and support our local communities. Where ordinarily, we'd be looking on trains and at stations, a lot of our work has had to be virtual. We've used our website and social media accounts and we continue to highlight our volunteers and the local businesses, events and attractions through our social media channels.



### WELCOME BACK PACKS

A project aimed to show our appreciation to the fantastic work that our volunteers do in our area. During lockdown, all volunteer activity had to stop. With part of the funding generously provided by the Community Rail Network, the Heart of England CRP put together Welcome Back packs for each of its volunteers. Every pack contained hand sanitiser from the Warwickshire Gin Company, a reusable fabric face mask, a bottle of Warwick-based Lyoki Chapman's Original drink, chocolate from Henley Chocolates and a pen donated by the Samaritans. Each station group also received a gift card for a garden centre local to their stations and a card donated by local artists Bryan B Kelly and Janet Watson.



The newly formed Women in Community Rail South group have hosted a series of sessions for all members of community rail. These sessions focussed on topics from working in isolation, to advice and support for those new to community rail.

We have supported numerous local events through our social media channels including Stratford Arts Festival, Art in the Car Park, Stratford Literary Festival's 100th Anniversary, Warwick Words Digital Festival, National Bookshop Day, Creative Women's Paint The Yard, Love Your Bike, The Maker's Market at FarGo, Stratford's Art In The Park's Virtual Festival, Tyseley Virtual Open Day.

Downloadable from:

[www.heartcommunityrail.org.uk/news-events/news-events-1/2](http://www.heartcommunityrail.org.uk/news-events/news-events-1/2)

# Welcome Back Packs

15 Adoption Groups

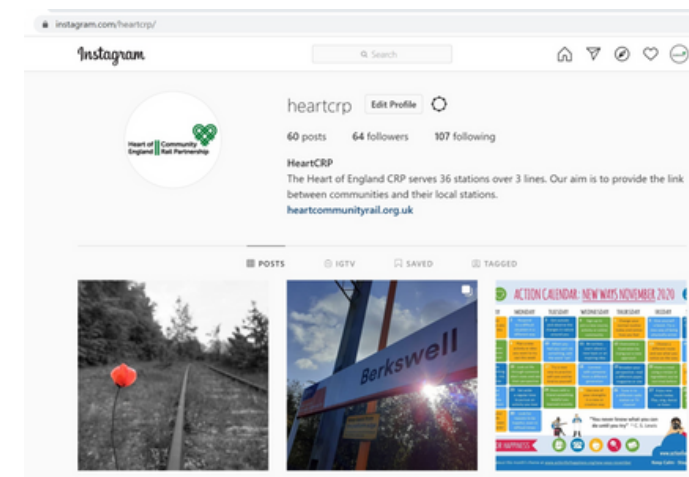
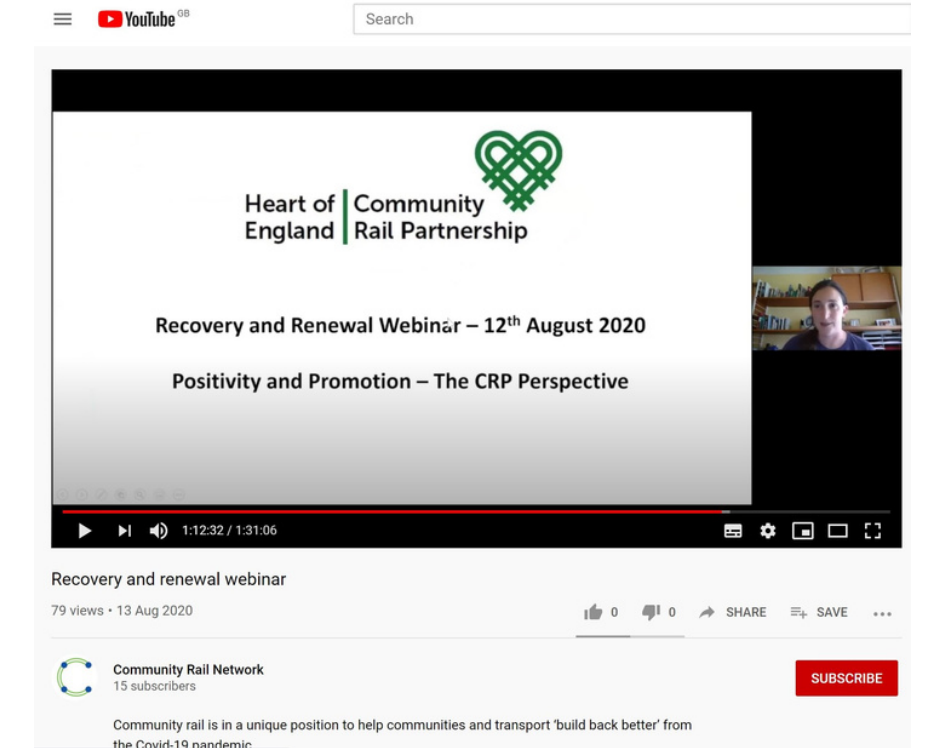
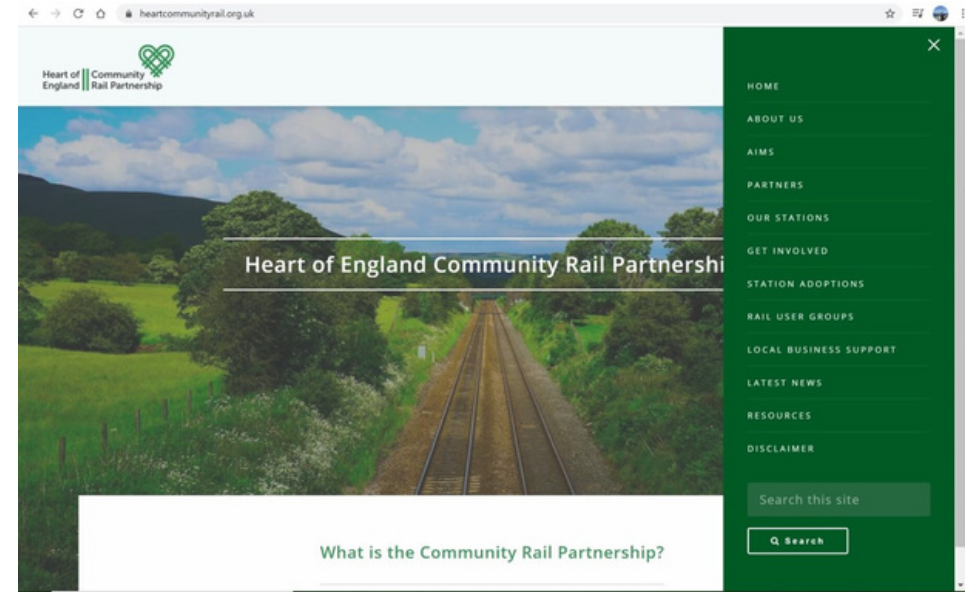
131 Volunteers

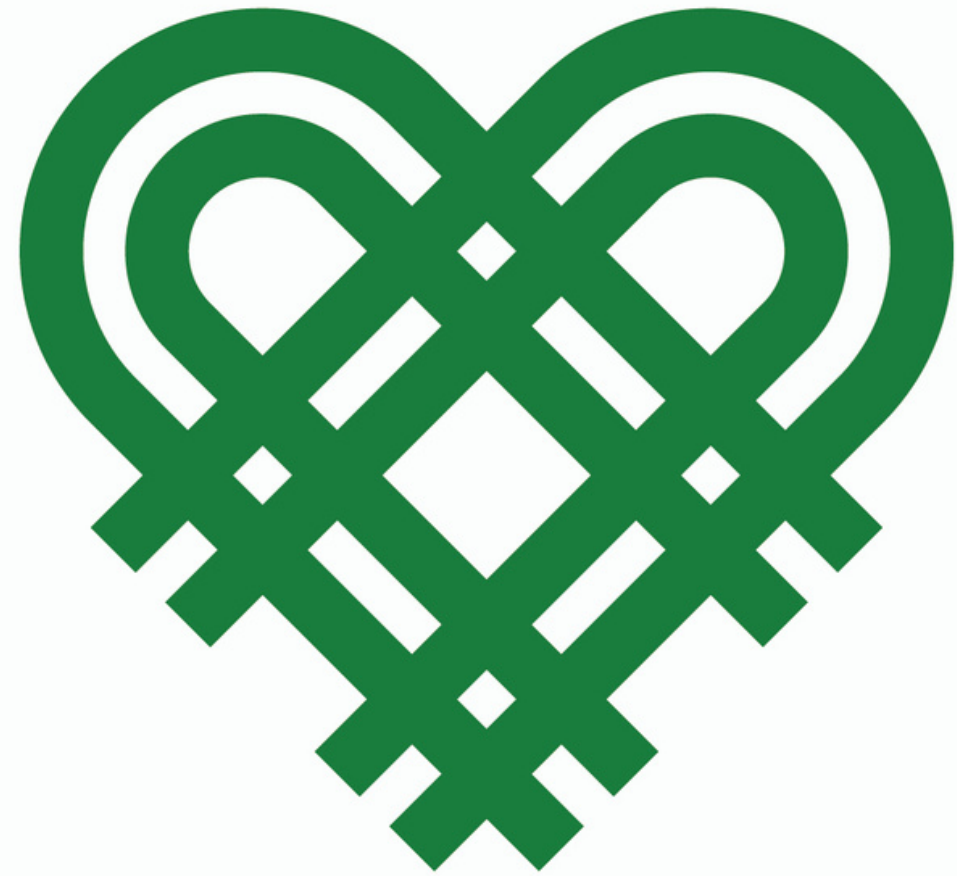
Funded by the Heart of  
England CRP and  
Community Rail Network

Contents were sourced  
from local, independent  
retailers and artists



# Other Projects



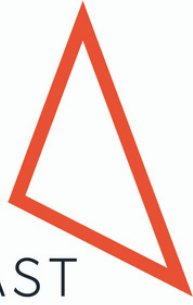


Looking Forwards

Supporting Social and Economic Development

# Careers Creativity and the Commonwealth

AVANTI  
WEST COAST



Based at Birmingham International  
with funding from Avanti West Coast

1. Working with Brink Contemporary Arts on a mural based on the them 'Connecting people with places and opportunities', for Platform 1.
2. Working with the New Leaf Initiative initiative on a Coaching, Mentoring & Employability programme that will result in sustainable employment at the end of it.



# Kenilworth Recovery Group

Heart of England CRP, WMR, WCC, Kenilworth Chamber of Trade,  
English Heritage at Kenilworth Castle, local councillors and key  
members of the local community

Wayfinding and signage  
Connecting the station with the town  
Linking with and promoting local attractions  
Improving the station environment  
Increasing patronage on the line  
Supporting the independent ticket office





# A Day Like This...

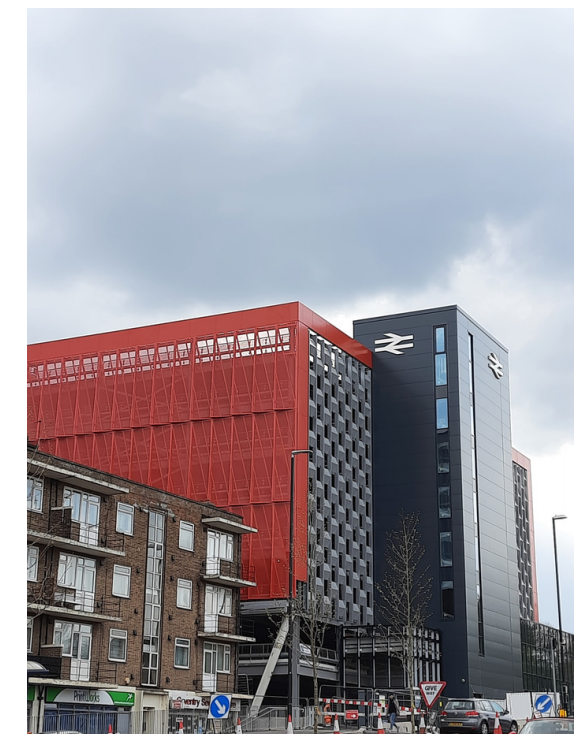
Promoting the safe and accessible use of travel by rail for underserved audiences.

Documenting, celebrating, and sharing the experience of young people experiencing their first day trip by train.

Planning Workshops

Digital Performance Making Workshops

Digital Installation at Coventry Station



# Other Projects

Rail Safety Film for Rail Safety Lessons

Shakespeare Garden at Henley -in-Arden

Renovating Henley-in-Arden Station Building

Working with our station adopters

STEM education programme

Supporting local events

Running events on trains and at stations

Positive Youth Foundation, Stoke Aldermoor Social Partnership, Warwickshire Ramblers, Scenic Rail Britain



Find out  
more

Heart of England Community  
Rail Partnership:

---

[heartcommunityrail.org.uk](http://heartcommunityrail.org.uk)

Instagram and Twitter: @HeartCRP

[juliasingletontasker@warwickshire.gov.uk](mailto:juliasingletontasker@warwickshire.gov.uk)

07827 954 022

