

Community Rail Network



Heart of England CRP Annual Event

10th May 2021

Paul Webster

Support & Development Manager

paul@communityrail.org.uk





Engaging communities in their railway

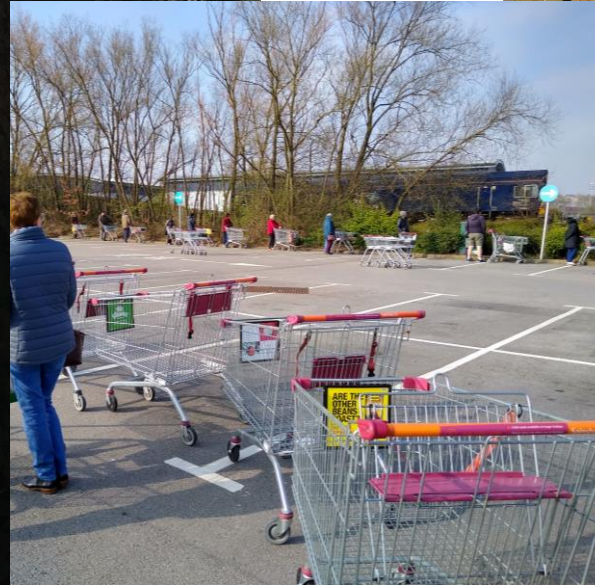
We are the membership body for over **70 community rail partnerships (CRPs)**, plus hundreds of **station friends** and other groups and enterprises that make up the community rail movement.

We support **community-based** groups and partnerships around Britain that connect their community with their railway.



March 16th 2020 ...

- My final visit to a community rail group – Hednesford adopters
- Then, this was as close as we got to a train for the next 4 months





**Community
Rail
Partnerships
have a
significant
local impact.**

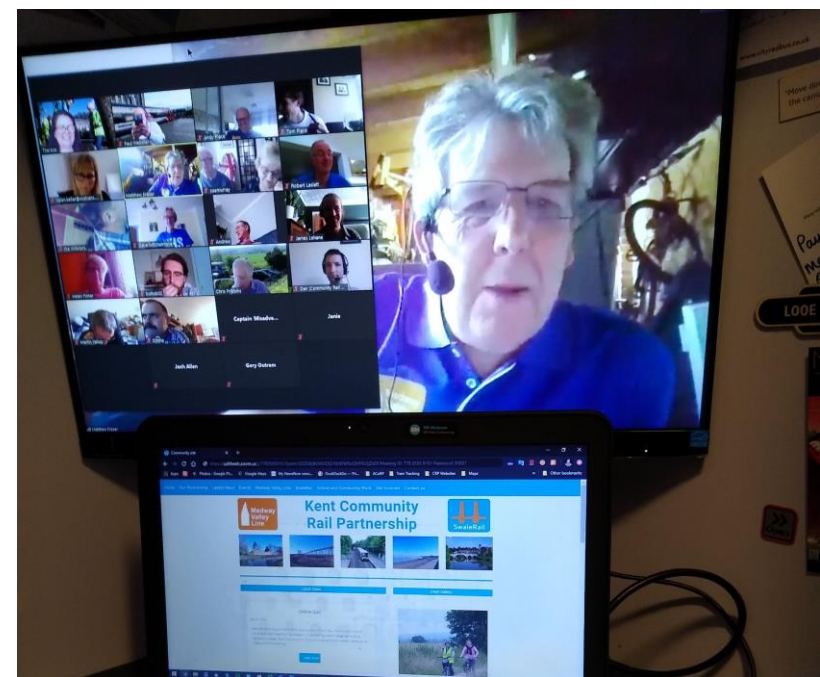
**Much
wider than
just the
railway**

**It's more than
just trains...**

**Community rail
is an inspiring
grassroots movement.**

Hundreds of partnerships
and groups around the
country are working to build
positive connections between
local people and their railways.

**Find out more
about
community rail**



Community rail organisations kept in touch with their communities



Community rail has kept developing and innovating



Community Rail impact reports

- Six area based community rail awareness reports
- Increasing uptake of Impact Measuring Tool
- Recognition by DfT of the 'difference' community rail activities make in rail recovery


Take a look at our reports on community rail in your area




© IMPACT Activities Surveys Goals Reports Users Beneficiaries

Activities

Search activities...



Featured
Gardening on the station and surrounding area
Track volunteer hours spent gardening at a station



Featured
Keeping the station tidy
Litter picking, reporting graffiti and vandalism etc

14 community rail partnerships
Working along railway lines, with industry partners, to engage local communities. Partnerships stretch from North Lincolnshire down to Bedfordshire.

160 station groups
Voluntary groups bringing stations into the heart of communities. In the Midlands and the East, more than 60% of the network is 'adopted' by local volunteers.'

Each Year
3,000 Volunteers
Giving
46,000 Hours
Worth
£3.9m

Find out more about community rail in the Midlands and East



Member support and our latest resources



ANNUAL REPORT
2019/20



Community Rail Network
(Formerly the Association of Community Rail Partnerships - ACoRP)
Supporting the community rail movement to flourish



National landscapes and community rail:
working with National Parks, AONBs and other outdoor spaces



Funded by
northern

How can community rail support Covid-19 recovery and building back better? September 2020

Community Rail Network

Community rail is more important now than ever, to aid the recovery of our communities and their vital railways and sustainable transport links.

The briefing shows the ways that community rail partnerships and station groups can work with rail industry, local government and community partners to negotiate the challenging months ahead to restore use of our railways and strengthen our communities.

Community rail partnerships and groups are eager to do as much as they can to help communities, rail government and partners to cope with challenges and seize opportunities.

As their umbrella body, we are here to support that, working with strategic partners such as DfT and devolved governments, Rail Delivery Group, Network Rail, RSSB, and our alliance of sustainable travel organisations.

Challenges and opportunities:

Covid-19 has caused much detriment to our communities and our railways, and we continue to face great uncertainty. Rail use is down and car use back up. Some areas face renewed restrictions, and we have just entered recession. The climate crisis is ever more pressing, with transport the biggest contributor.

Yet opportunities have opened up:

- communities have pulled together, to support vulnerable people and strengthen their local areas
- people have seen the benefits of less traffic and pollution, and more walking and cycling
- so many of us recognise the importance of building back better, greener and fairer

Since the pandemic hit, community rail has adapted, supporting local resilience, engaging communities, volunteers and partners online, maintaining togetherness, and looking to the future.

About community rail:
A growing, unique grassroots movement, connecting people with their railways and stations, delivering social, environmental, economic benefit.

Across Britain, we have:
72 community rail partnerships;
1,000 station friends groups;
9,000 volunteers.

It's evidenced to:
increase rail passenger growth;
enhance health, wellbeing & access to opportunity; influence behaviours & attitudes; support local place-making and regeneration.



Engaging local media
a guide for community rail groups



Funded by
northern



'Looking to the future'
An exploration of youth engagement in rail

Written by Rob Lowson
Edited by Jodie Townsend



Sponsored by
Rail Delivery Group



Station adoption & community projects:
using an outcomes-based approach



Funded by
NORTHERN

- Station Adoption Groups grants of up to £1000
- Grants for CRPs of up to £2500
- Scenic Rail Britain website to promote local community rail lines
- Resources covering...
 - National Landscapes
 - Engaging Local Media
 - Youth Engagement
 - Measuring Outcomes
 - 2019-20 Annual Report
 - Covid-19 Recovery



Resources and Dates for your diary

- Promoting rail's green credentials (webinar) – 8th June
- Encouraging modal shift in communities (webinar) – 23rd June
- Summer Days Out Are Better By Train (campaign) – 30th June
- Community Rail Awards - Southampton – 9th December
- Training bursaries – up to £200 for training of your choice
- Networking groups - Tourism, Education, Gardening, & for Chairs

All promoted in Community Rail News e-bulletin and on our website





Station groups membership

Adopt your station

Station friends and adopters, local *community rail* groups and station-based businesses help to make stations welcoming, safe and interesting.



Become a station groups member for just

£25^{+VAT}

A straightforward application requiring :

- Group terms of reference or constitution
- Bank account details
- Confirmation of your group's TOC safety brief
- General outline of ideas & plans for the station

- **Free** places at our events and workshops
- Bursaries to attend training (incl. on-line)
- Grants of up to **£1000** for each station group
- Expert advice from our team on buildings, tourism, social inclusion, media & comms etc.

<https://communityrail.org.uk/join-us/station-adopters-small-groups/>



How can community rail be part of society's new way of working, in leisure and for living?

- Community rail is a **key part** in the DfT rail reform agenda & National Rail Contracts. There is plenty of local intelligence in community rail to **inform TOCs** plans and products.
- Travel patterns have changed. **Maybe for ever.** What does off-peak even mean now?!
- **Decarbonisation.** New stations closer to where people live to reduce car journeys and raise the profile in our communities of sustainable travel?
- International travel is restricted, how can Station Friends and local tourist sites/businesses be attractive and welcoming? **Shop, Stay, Invest Local**
- Encourage community use of redundant spaces at railway stations.



Amplify how community rail meets the government **Social Value Model**

Community rail in 2021 & beyond

- Digitally-enabled and hybrid engagement – making the most of technology we have learnt this year for essential purposes but maximising time to travel and explore
- The power of community – encourage shopping local, continuing links with local charities and community support projects.



Community rail in 2021 & beyond

- Partnership working – with communities hardest hit by the pandemic or those with anxiety about rail travel
- Growing climate awareness with rail at the core of active and sustainable travel – the natural first choice alongside walking, cycling and other forms of public transport



Book your journey today

CallConnect



Community rail in 2021 & beyond

- Days out and UK holidays – travel with confidence to bring on board new leisure passengers, rebuild existing patronage and promote inclusive access to attractions.
- Creativity, confidence and story-telling – we all miss being together, so build stories, memories and ownership of shared travel experiences



Travel with confidence



Wash your hands



Wear a face covering



Travel at quieter times



National Rail





Community rail will continue to shine as a beacon of togetherness in a sometimes grim world



Find out more:

Web: communityrail.org.uk

Paul Webster paul@communityrail.org.uk



Newsletter : communityrail.org.uk/news/community-rail-news-sign-up/



Follow @CommunityRail & #CommunityRail



facebook.com/CommunityRail



linkedin.com/company/communityrail

