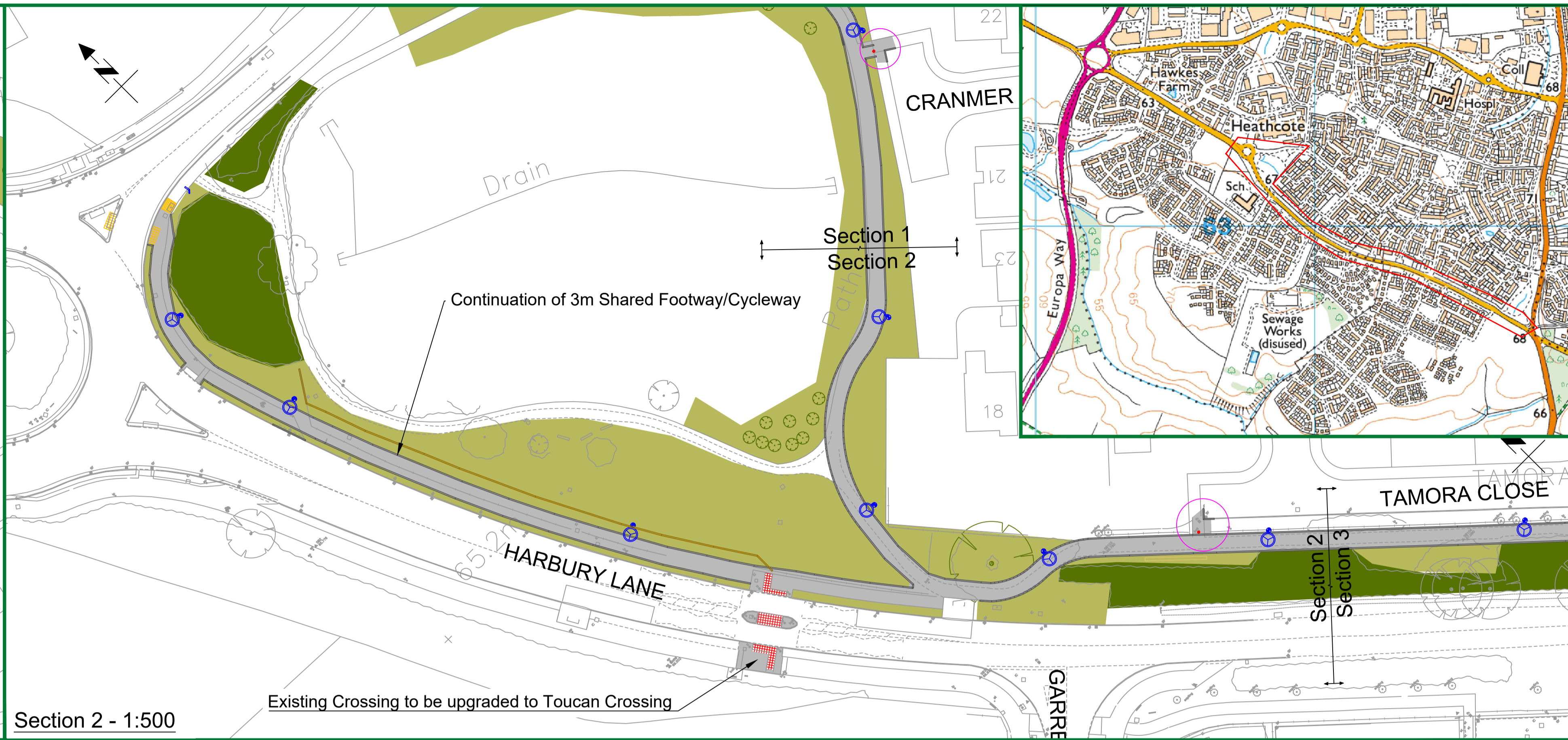
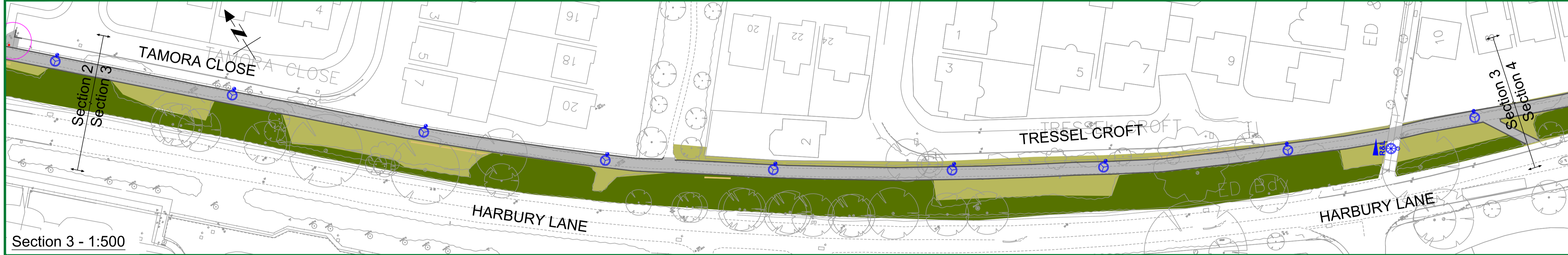




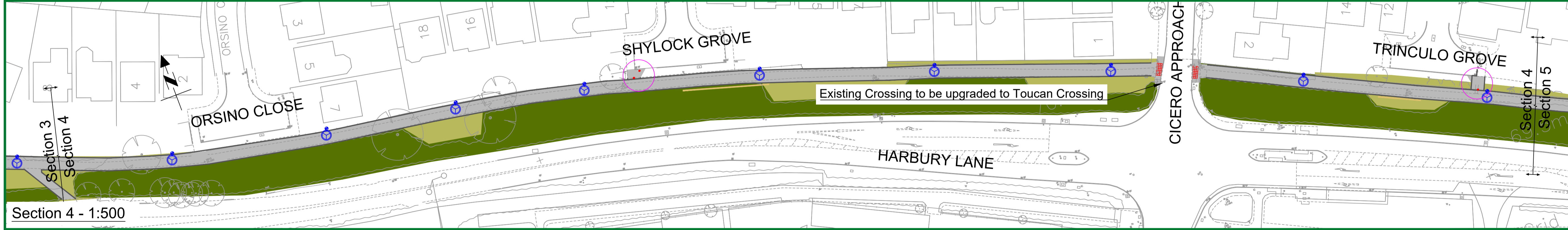
Section 1 - 1:500



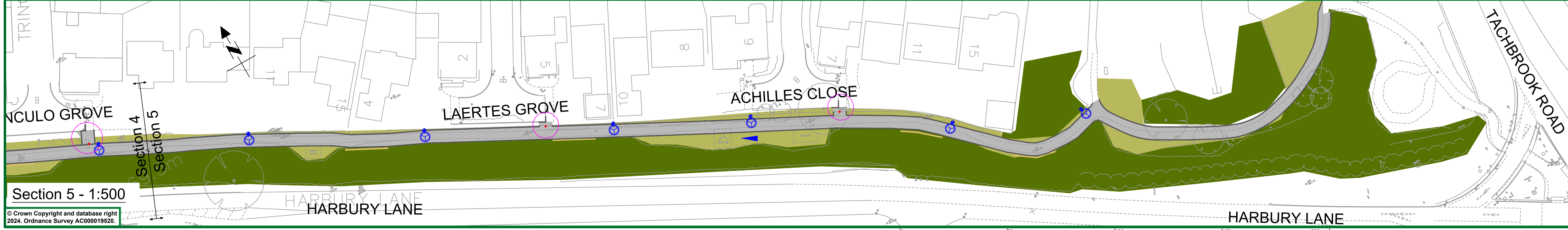
Section 2 - 1:500



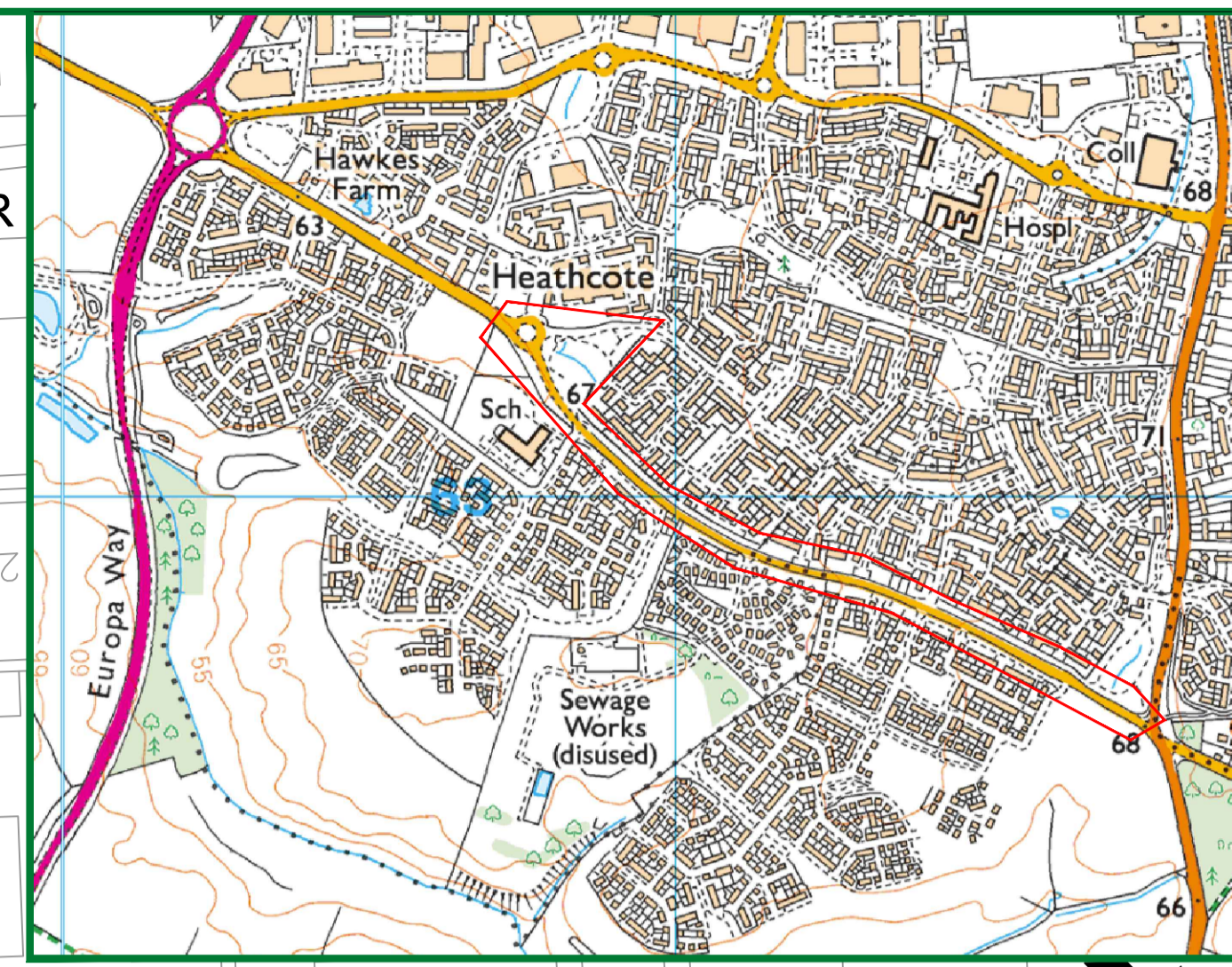
Section 3 - 1:500



Section 4 - 1:500



Section 5 - 1:500



- NOTES
- Existing footpath to be paved and upgraded to a proposed 3m wide shared use footway/cycleway.
 - Pedestrian and Cycle accesses will be added at Cranmer Grove, Tamora Close, Shylock Grove, Trinculo Grove, Laertes Grove and Achilles Close. These areas are circled in Magenta.
 - Path to be street lit, with LED lanterns. The lanterns will be a minimum Wattage, yellow light and will include shielding backing plates, minimising any light pollution to nearby properties and the natural environment.
 - The signalised pedestrian crossings at Cicero Approach and on Harbury Lane near Garrett Drive/Heathcote Primary School will be upgraded to Toucan crossing facilities suitable for cycle usage.
 - New segregated 2m wide footway, 3m wide cycleway section between the bus stop on Harbury Lane (opposite Heathcote Primary School) through to Earl Rivers Ave/Gallagher Way Roundabout. Provides link to Phase Two for future development.
 - Phase Two will continue the route through to the Europa Way/Gallows Hill roundabout, providing improved footway/cycleway facilities on the North side of Harbury Lane.

A	CL	Removal of Segregated C/way for Shared Use	28.08.24
REV	DRN	AMENDMENT	DATE

PROJECT PHASE STATUS: DETAILED DESIGN COMPLETE

Drawing Content Status: FULL SOLUTION

Suitable For: ROAD SAFETY AUDIT RSA-2, STRUCTURAL CHECK

PROJECT PROGRESS: [Progress bar]

Engineering Design Services
Environment, Planning and Transport
Communities Directorate
Shire Hall
Warwick
CV34 4RL
Tel: 01926 410410
Web: www.warwickshire.gov.uk

FS 26655

PROJECT	C43 - C43 Harbury Lane - Cycle Route <small>28/05/2024 10:33:48, CLow2, 180x411.dwg A1 (841.00 x 594.00 MM)</small>
TITLE	General Arrangement Phase 1 Full Extent
DRW	CL
Date	17-07-24
Status	Awaiting Checking (Level 4)
Scale	1:500
Sheet size	A1
DRG. NO.	9.2-C43--017-010
Rev.	A