



# RAIL Trails



Image by Nigel Shuttleworth

## Coventry Arena to Bedworth

From world class exhibition centre to the former mining town of **Bedworth** on the outskirts of Coventry, this trail largely follows the **Coventry Canal**. Beyond Coventry much of the canal is rural and home to diverse wildlife.

This trail then takes you through the **Miners Welfare Park**, on the outskirts of Bedworth. It is well worth spending some time exploring the formal gardens, wild flower meadows and nature reserves.

Bedworth itself is a small market town but also a fast growing commuter town. Look out for the Grade II listed **Nicholas Chamberlain Almshouses** and **Heritage Centre**.

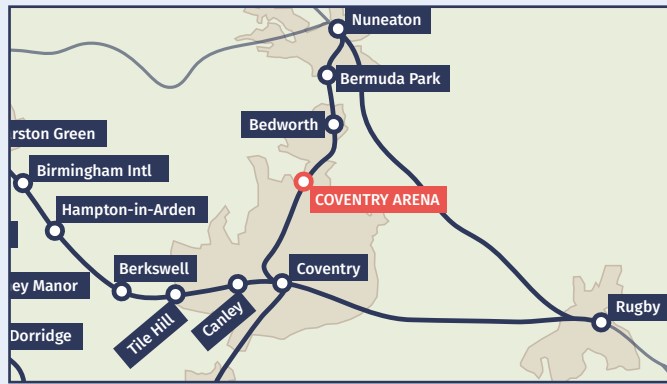
Stock up or grab a bite to eat before setting off at the **Arena Shopping Centre**. Alternatively in Bedworth swing by **Jojo's Bistro** or buy some picnic supplies at one of Bedworth's oldest family businesses, **Harry's Bakery**, just 12 minutes from the station.

### Further Information:



Visit [www.visitcoventry.co.uk](http://www.visitcoventry.co.uk) for more on Coventry, including the area around Coventry Arena.

[www.visitnorthernwarwickshire.com](http://www.visitnorthernwarwickshire.com) provides more information on Bedworth and its surroundings.



**Coventry Arena** is on the branch line between Coventry and Nuneaton. You can connect via those stations to Birmingham, London and the West Coast Mainline.

Trains run in both directions hourly calling at both Coventry Arena as well as Bedworth and other stops on the line. Southbound trains continue to Leamington.

Limited facilities are available at this station, but the Arena Park shopping centre is close by.

### Want More?

This is just one of a range of 36 self-guided walks from railway stations in Warwickshire, Coventry and Solihull.



Discover the Heart of England by rail at: [www.heartcommunityrail.org.uk/railtrails](http://www.heartcommunityrail.org.uk/railtrails)



Design by: [www.blackspiraldesign.co.uk](http://www.blackspiraldesign.co.uk)



# RAIL Trails



Discover The Heart of England by Rail



## Coventry Arena

Image by Amanda Slater

🕒 2 Hours

👣 3.5 Miles 📏 Easy / Flat

Start: **Coventry Arena** Finish: **Bedworth**

Amble along the Coventry Canal from a world class exhibition centre to the former mining town of Bedworth.

[www.heartcommunityrail.org.uk/railtrails](http://www.heartcommunityrail.org.uk/railtrails)



## Trail Highlights...



Image by Arena Shopping

### A. Arena Shopping Park

A one-stop shopping and leisure destination in the north of Coventry. With over 20 big name stores and a great selection of cafés and restaurants. Grab a bite before you begin or stock up on provisions!

[www.arenashopping.com](http://www.arenashopping.com)



Image by Amanda Slater

### B. Coventry Canal

Stretching for 38 miles across the Midlands' countryside, much of the canal, with its lush towpath is designated a Conservation Area and home to diverse wildlife. Keep your eyes peeled for ducks and other wildfowl, but you may even spot otters!

[www.canalrivertrust.org.uk/coventry-canal](http://www.canalrivertrust.org.uk/coventry-canal)



Image by DeanoG60

### C. Miners Welfare Park

Enjoy formal gardens, wildflower meadows and protected nature reserves on this former colliery site. You'll also find play areas, a skate park, community gardens and the Mayor's cafe, serving vegetarian fare from the gardens themselves!

[www.facebook.com/bedworthcommunitygardens/](http://www.facebook.com/bedworthcommunitygardens/)



Image by Visit Nuneaton & Bedworth

### D. Harry's Bakery

A sense of pure nostalgia and some absolutely tip-top cakes, bread, pies and other delights at this family run business that has been operating in Bedworth for longer than most can remember!

[www.facebook.com/HarrysBakery/](http://www.facebook.com/HarrysBakery/)

### Did you know?



Continuing its rich industrial traditions, the torches for the 2012 Olympics were made in **Bedworth!**

## Also Recommended..



Image by Ian Milton

### E. Bedworth Heritage Centre

Located within a section of Bedworth's historic Almshouses (a site in and of themselves!). The Centre hosts a wide range of events and exhibitions focussing on the heritage and history of the town.

[www.bedworth-society.co.uk/heritage-centre](http://www.bedworth-society.co.uk/heritage-centre)



Image by JoJo's Bistro

### F. JoJo's Bistro

Cakes, bakes, salads and much more. Definitely a great spot for some post walk sustenance! We are reliably informed the Caramel Freddo Brownies are absolutely top notch!

<https://www.facebook.com/joannecharley1971/>

# RAIL Trails



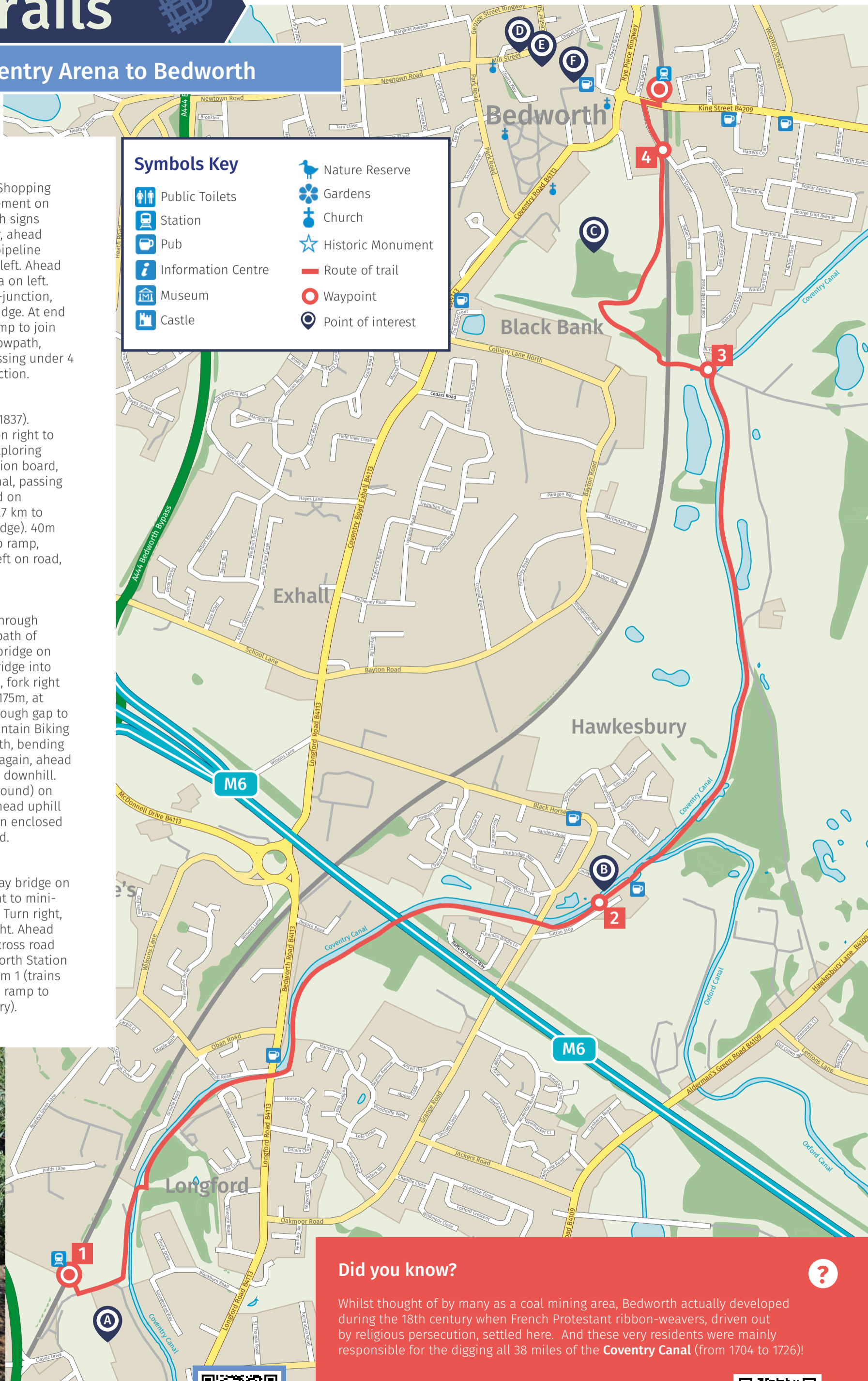
## Coventry Arena to Bedworth

### Trail Directions

- Exit station towards Arena Shopping Park. Turn left on wide pavement on service road, passing 15 mph signs & Curry's on right. At corner, ahead towards white/orange gas pipeline post. Turn left, litter bin on left. Ahead on enclosed cycleway, arena on left. At railings in front & path T-junction, turn right crossing canal bridge. At end of bridge, turn left down ramp to join Coventry Canal. Ahead on towpath, canal on left, for 2.2 km, passing under 4 bridges, to Hawkesbury Junction.
- Ahead cross iconic bridge (1837). Pass small building (1909) on right to information board. Enjoy exploring the Junction. From information board, ahead, still on Coventry Canal, passing engine house on left. Ahead on towpath, canal on left, for 1.7 km to bridge 13 (Bedworth Hill Bridge). 40m BEFORE bridge, fork right up ramp, leaving canal. At top, turn left on road, crossing canal bridge.
- At end of bridge, turn left through low barriers. Ahead on towpath of canal side arm. Ignore footbridge on left. Ahead under railway bridge into Miners Welfare Park. In 20m, fork right on surfaced path uphill. In 175m, at path junction, turn right through gap to another path junction (Mountain Biking sign). Turn right on wide path, bending left. Where path bends left again, ahead on grass along edge of Park downhill. Keep white fence (cricket ground) on left, railway over to right. Ahead uphill to top right corner. Ahead on enclosed path between fences to road.
- Turn right cross road (railway bridge on right). Turn left on pavement to mini-roundabout (Queen Street). Turn right, passing Drinks World on right. Ahead to railway bridge. Turn left cross road (care) (King Street) to Bedworth Station – down first ramp to Platform 1 (trains to Nuneaton); down second ramp to Platform 2 (trains to Coventry).

### Symbols Key

	Public Toilets		Nature Reserve
	Station		Gardens
	Pub		Church
	Information Centre		Historic Monument
	Museum		Route of trail
	Castle		Waypoint
			Point of interest



### Did you know?

Whilst thought of by many as a coal mining area, Bedworth actually developed during the 18th century when French Protestant ribbon-weavers, driven out by religious persecution, settled here. And these very residents were mainly responsible for the digging all 38 miles of the **Coventry Canal** (from 1704 to 1726)!

Want an online map?

Scan the QR code or [visit explore.osmaps.com](http://www.explore.osmaps.com)



Ready for another Trail?

Discover more at [www.heartcommunityrail.org.uk/railtrails](http://www.heartcommunityrail.org.uk/railtrails)

