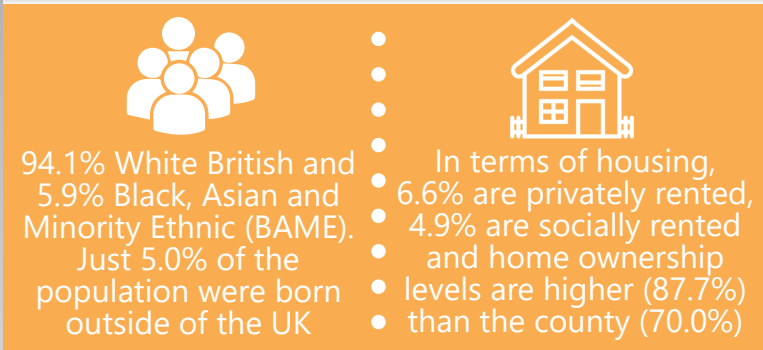
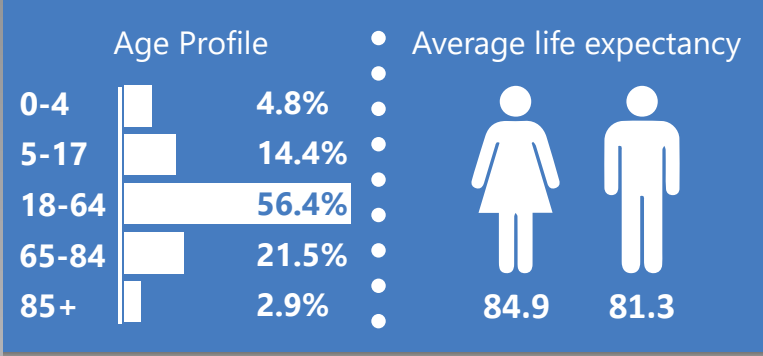
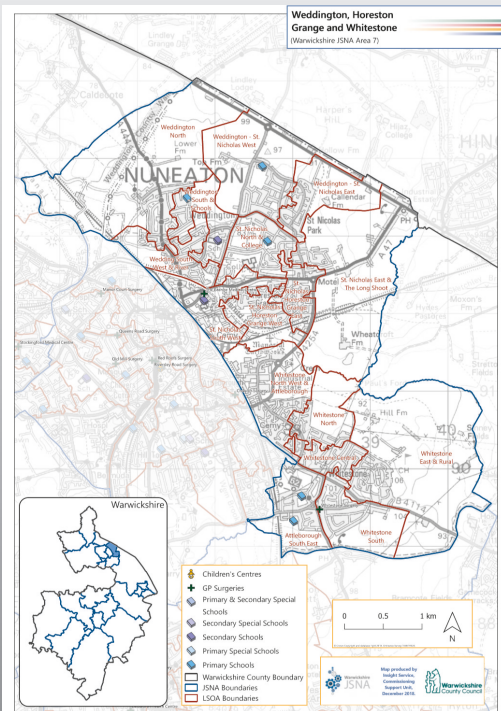




23,300
population

3.3%
increase in
population
between
2011 and
2018



Hypertension

Two GP practices report figures significantly higher than the national rate for the recorded prevalence of hypertension (13.9%) in 2017/18. The rate at the Grange was 19.8%

The prevalence of atrial fibrillation in two GP practices was significantly higher than the England rate in 2017/18. The prevalence appears to have been increasing since 2012/13

Based on 5 year aggregated rates, the JSNA area ranked 7th for emergency admission for strokes with rates above those for the county. It ranked 5th for stroke mortalities



Cancer

Cancer prevalence rates have been significantly higher than the England rate (2.7%) at The Grange medical centre since 2013/14. However, screening rates for breast, cervical and bowel cancer are also significantly higher

The JSNA area had the 4th highest 5 year average crude rates of A&E attendance for 0-4 year olds of all JSNAs in the county. Attendance was highest in the LSOA of Whitestone South

The recorded prevalence of asthma at the Grange medical centre (7.1%) was significantly higher than the England rate (5.9%) in 2017/18



Obesity

Data for 2014/15 to 2018/19 indicated that almost 1 in 5 Reception aged children and 1 in 3 Year 6 children at Warwickshire state schools were either overweight or very overweight. Figures are in line with the county

Estimated smoking prevalence (15+ population) at Red Roofs surgery was **19.6%** in 2017/18 - significantly higher than the England average (17.2%).

Three GP practices in the JSNA area recorded levels of obesity (a BMI of 30 and over) significantly higher than the England average (9.8%) in 2017/18



73.0%
of children achieved the Expected Level of Development at the end of Key Stage 2. This was an increase on 2018 (69.5%) and 2017 (68.6%) figures



58.4%
of students achieved the new Key Stage 4 measures of 9 to 5 (strong pass) in English and Maths, higher than the county average (49.5%)

In the JSNA are at Key Stage 4, the gap between pupils who are disadvantaged and those who are not is smaller -

24.2
percentage points - than the county (33.5)



The 2011 Census indicates the JSNA area had the highest levels of unpaid care provision of all JSNAs at 13.1%. This translates into around

3,000

unpaid carers in the area



14.2%
of adult social care service users were receiving a reablement package, higher than the district (11.3%) and county rate (10.8%)



There were **54** young carers known to Warwickshire's young carer project in 2019



A Nuneaton & Bedworth resident would need **5.9 times** the average annual salary (£27,055) to be able to afford the average-priced house (£160,000)



Attleborough Sough East LSOA had the lowest median household income (in 2015/16) of **£25,507**
Weddington St. Nicholas East had the highest (£36,242)



According to Experian's socio-demographic classification tool, Mosaic, **1 in 5** households are classed as 'Prestige Positions'



Key employment sectors in the JSNA area include
Education
Manufacturing
Construction
Health

JOBS

citizens advice

In 2018/19, **1 in 3** of all Citizens Advice appointments were related to benefits and tax credits

29.0%
of the population have achieved degree-level or above qualifications, higher than the borough rate (28.8%)



ACCESS TO HEALTHCARE was a key priority identified by residents and stakeholders following consultation in the local area



GREENSPACE was most likely to be mentioned by residents as one of their top 3 things to improve health and wellbeing



HOUSEBUILDING and its potential impact on key services (including health) was a cross cutting theme of consultation with residents and stakeholders