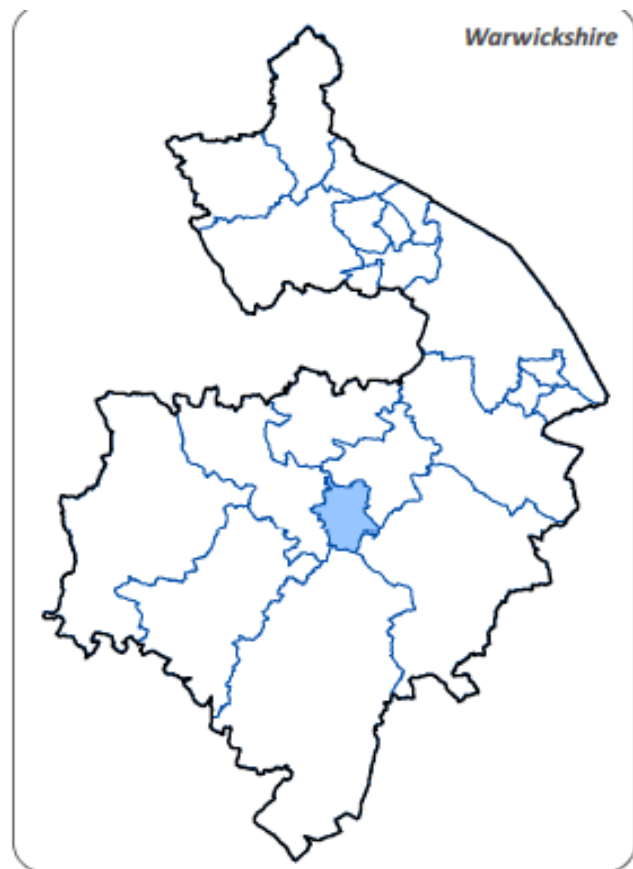


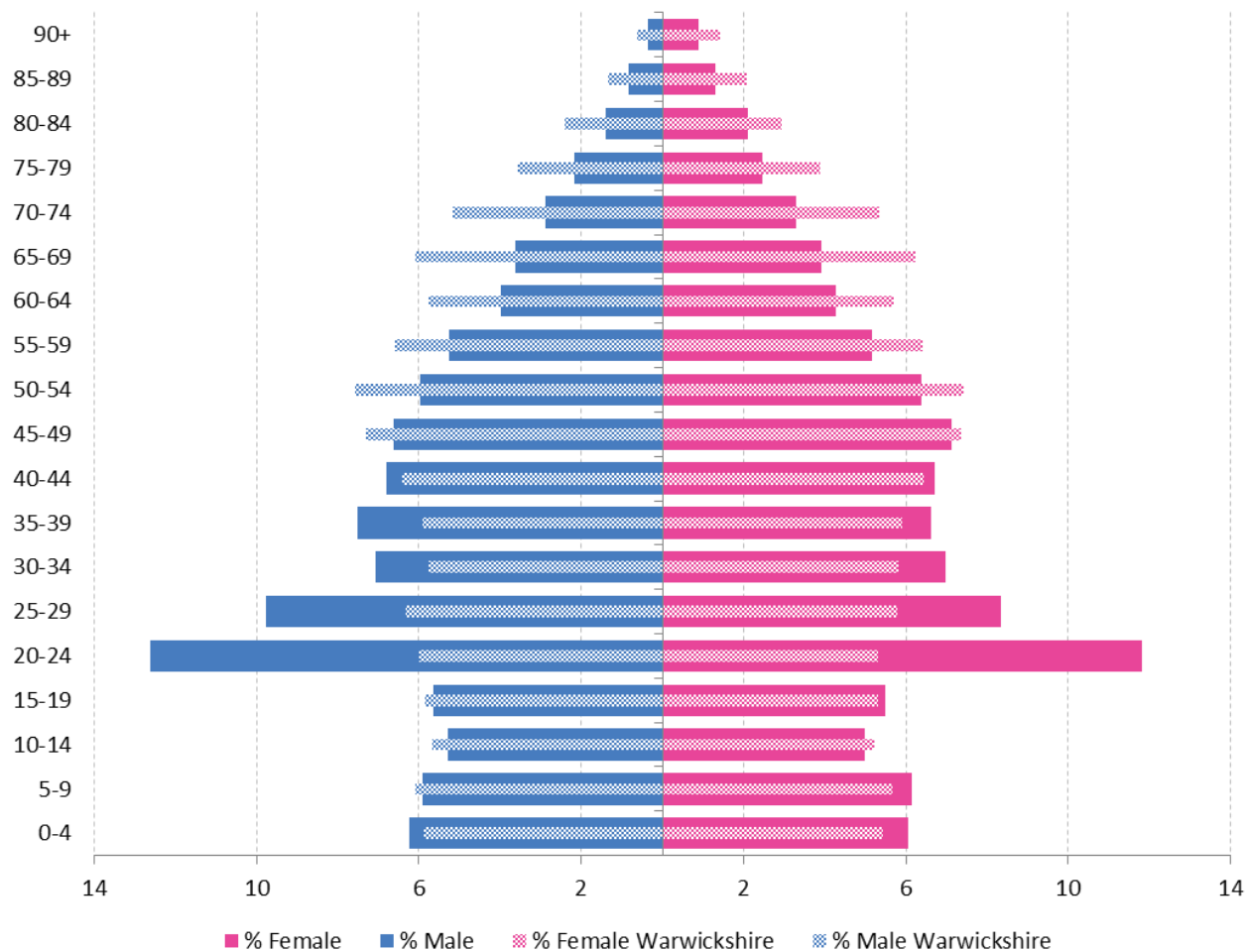
South Leamington JSNA AREA

including Leamington, Whitnash and Bishops Tachbrook

Place-based Needs Assessment



A 'youthful' population structure



Population characteristics

Population
40,207



20-30
years

5,000



65+
years



3.5%

- The JSNA area has a younger population profile
- 23% population aged 20-30 years compared with 13% in Warwickshire
- Reflects a large student population resident in parts of the JSNA (South Leamington)
- 12.5% of the JSNA population is 65+ compared with 20.6% in Warwickshire
- Current population has grown by 3.5% since 2011, slightly higher than district and county averages



Population characteristics



8.8%



**90 +
130%**



**25.9%
BME**

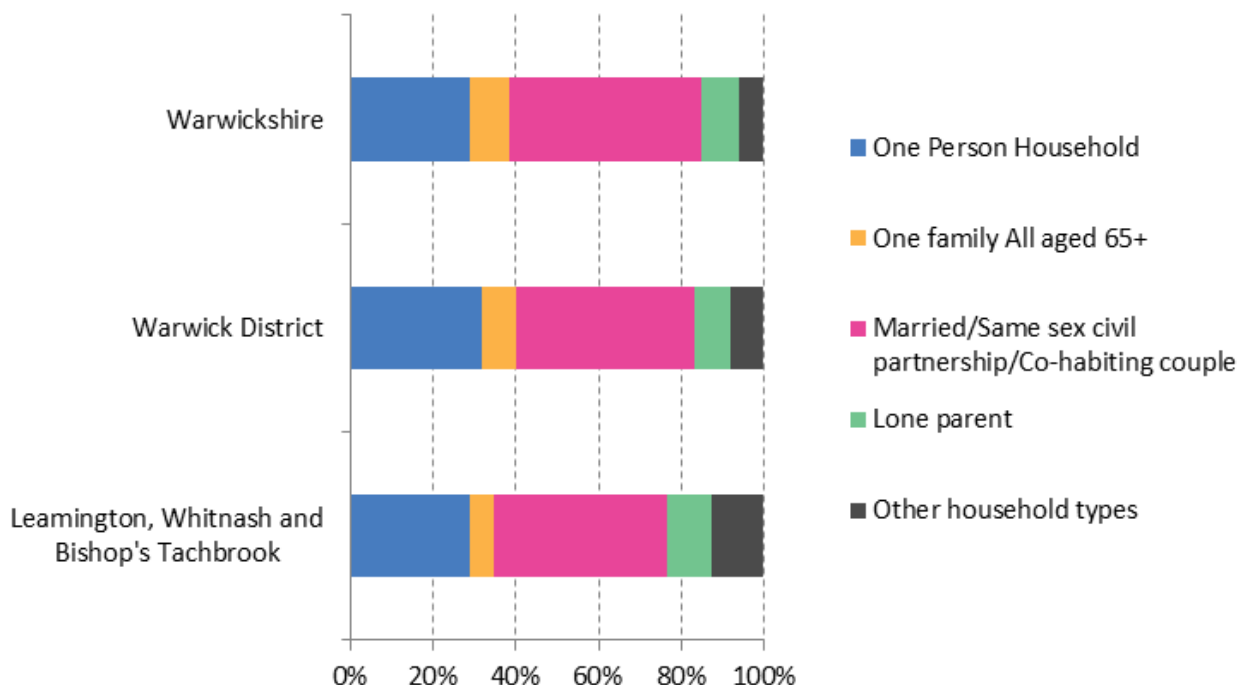


- Between 2016 and 2041 the population of Warwick District is projected to grow by 8.8%. The number of residents aged 75+ is projected to rise by two thirds and for those aged over 90 years it is 130%
- If those rates are applied to the population of the JSNA area then there may be an additional 7,460 residents aged 90+ to 13,200 people
- The area is more diverse than the district and county as a whole with 1 in 4 residents from a BME community. After White British, the most common ethnic groups were Indian, Other White, Mixed ethnic group and Irish
- After English, key languages spoken in the area are Punjabi, Polish and Portuguese
- A higher proportion of residents were born outside of the UK compared with district and county rates



Households

Household Composition



Source: 2011 Census

Households
15,426



1 in 5 homes are privately rented, a further 17% are rented from a social landlord

Household Projections

12.0%



By 2041 there would be 17,277 households



Households - Mosaic

“Rental hubs” = 22%

Key Features

- Aged 18-35
- Private renting
- Singles and sharers
- Urban locations
- Young neighbourhoods
- High use of smartphones



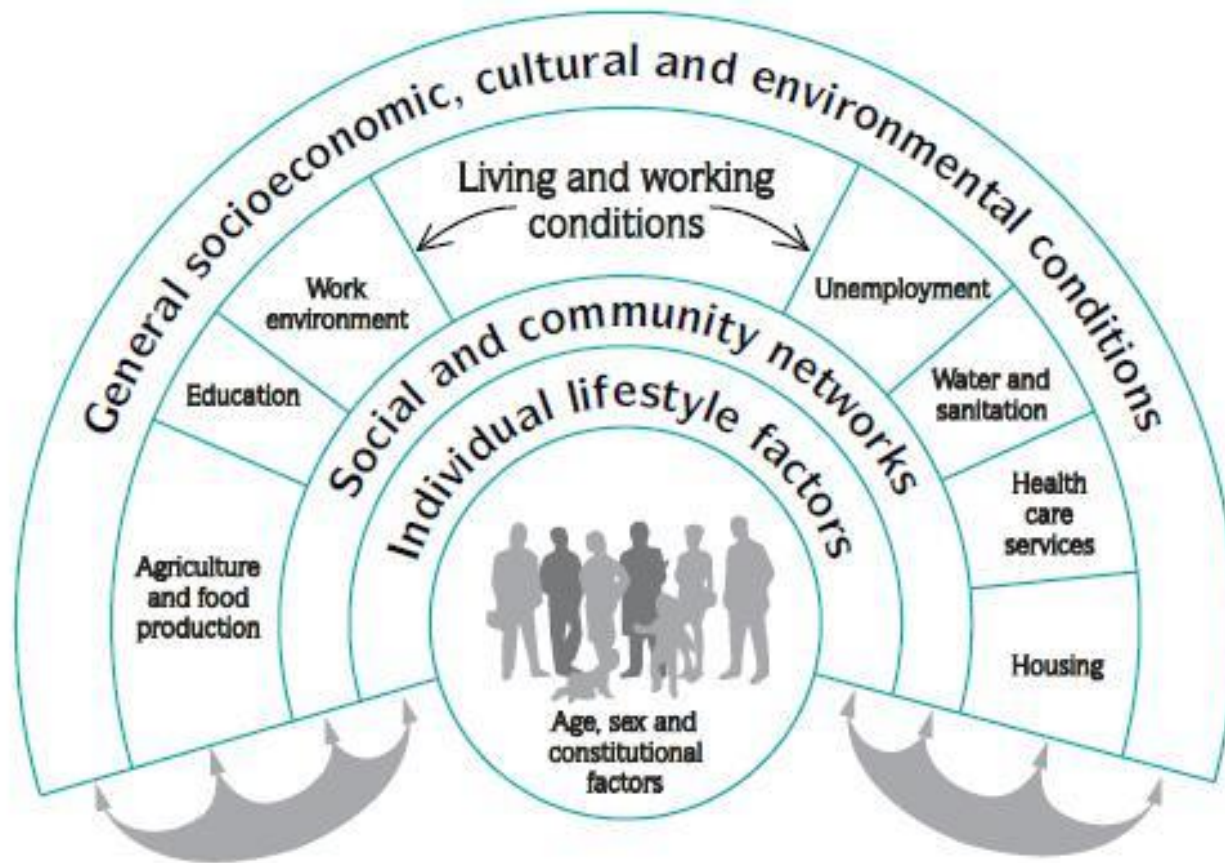
“Aspiring homemakers” = 16%

Key Features

- Younger households
- Full-time employment
- Private suburbs
- Affordable housing costs
- Starter salaries
- Buy and sell on eBay



Determinants of Health



Health - General

Life Expectancy

Average life expectancy



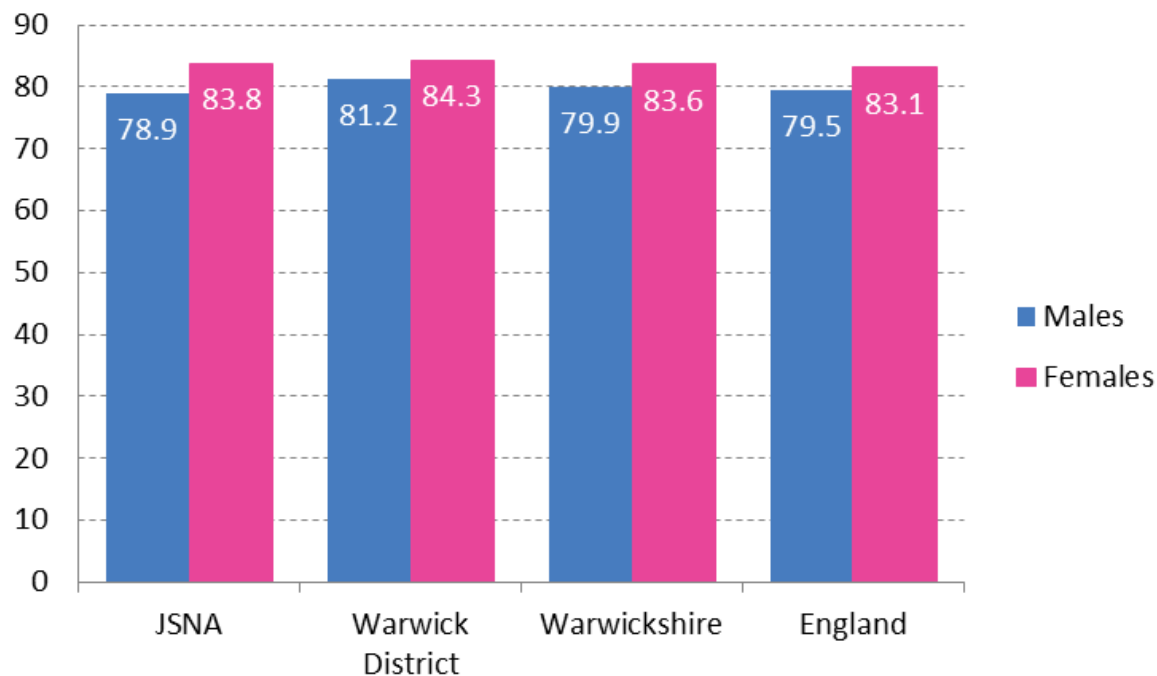
83.8



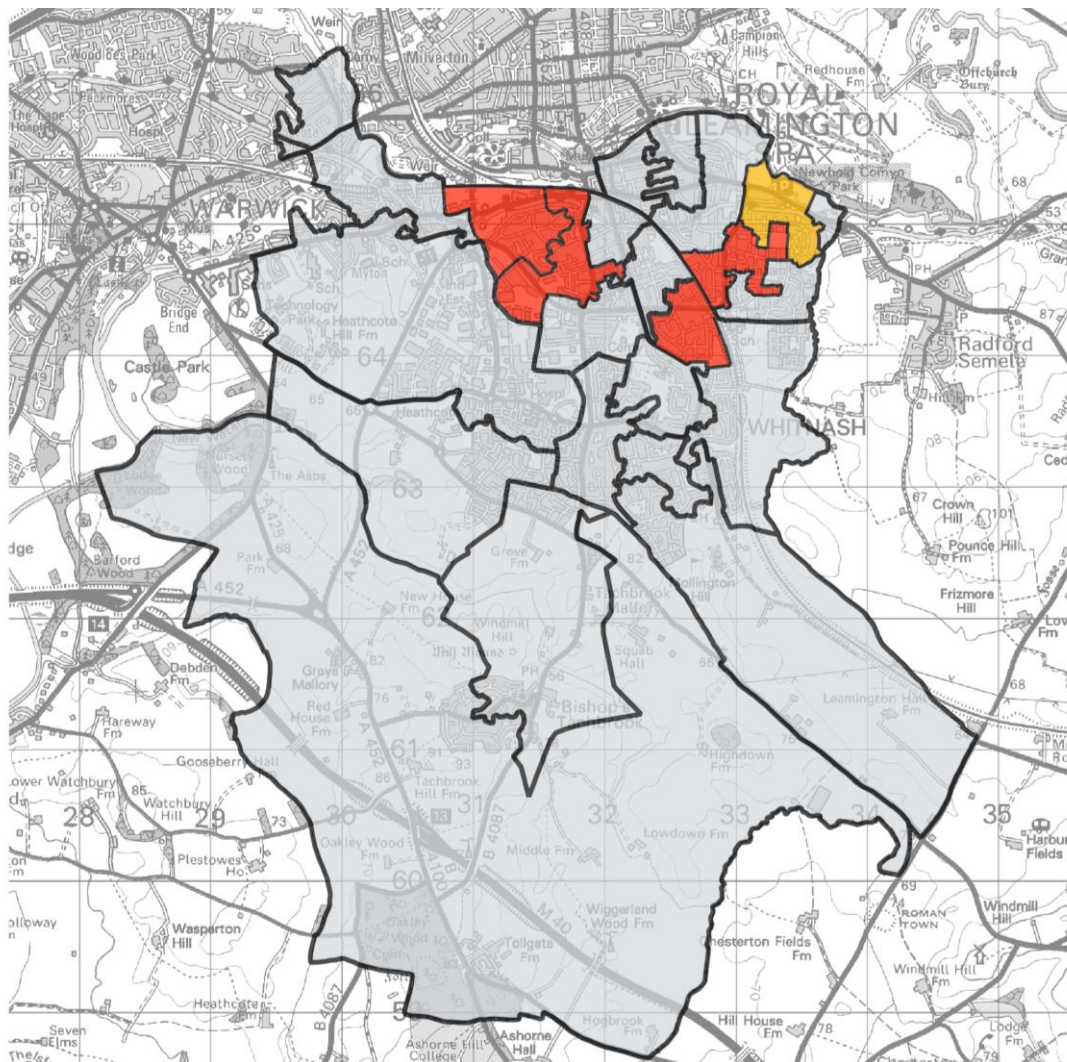
78.9



Healthy life expectancy
is 10 years less for men and women in
Brunswick MSOA compared with
Budbrooke and Bishop's Tachbrook



Poverty



Index of Multiple Deprivation 2015

- 30% most deprived nationally
- 40% most deprived nationally
- LSOAs in the 50% least deprived nationally

Brunswick NW & Foundry
Brunswick SW & Kingsway
Brunswick SE
Sydenham West

Sydenham North

**Income deprivation affecting
older people**

**Old Town West & Railway
Bridge**
Brunswick South & Cemetery



Poverty

12.5%

Of households (1,968
are 'fuel poor')



1 in 5

households do not
have access to a car



920

Children (11.3%)
under the age of 16
are recorded as living
in low income
households



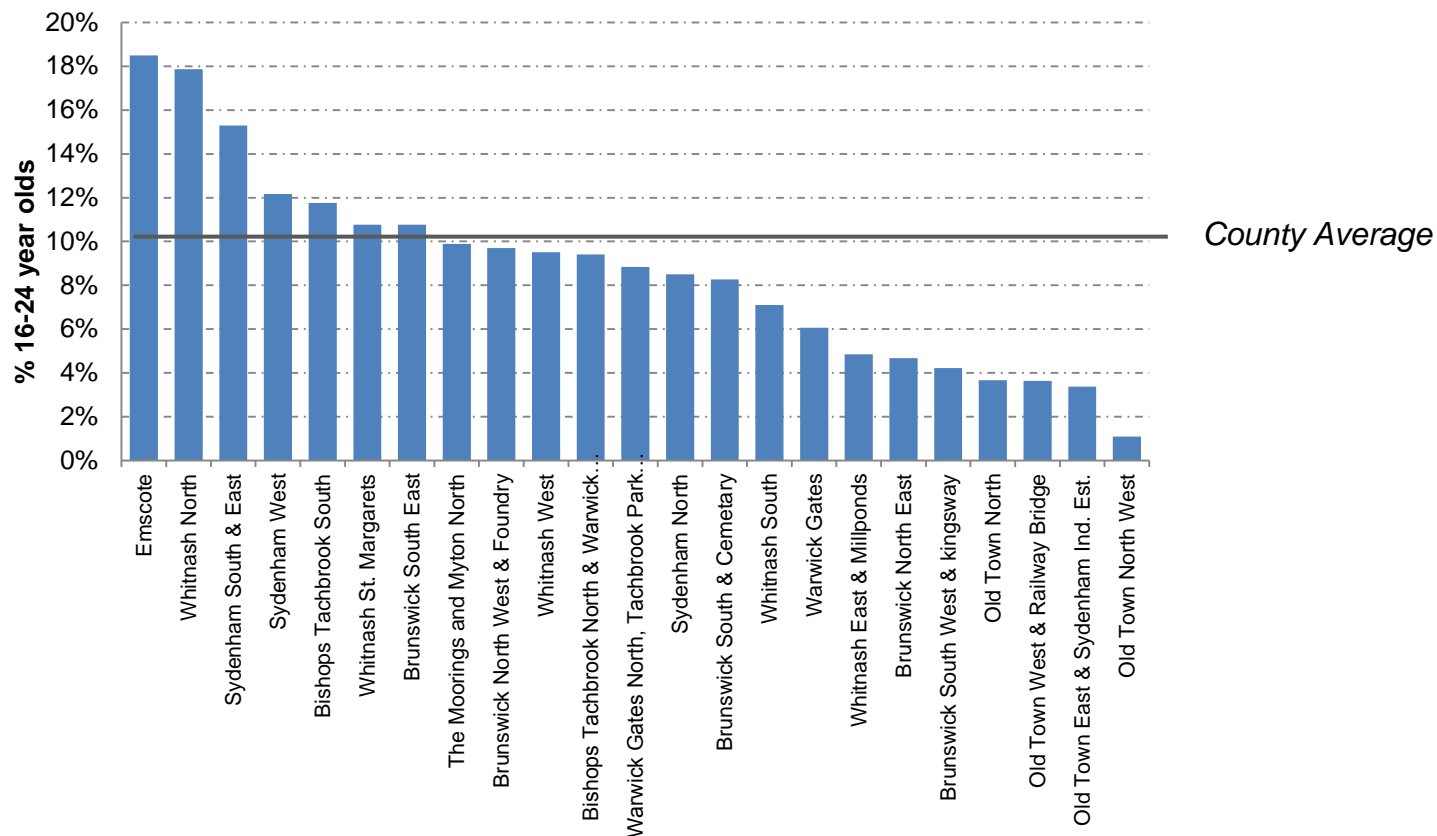
70

Applications for
'homelessness' were
accepted from the
JSNA area in 2017/18



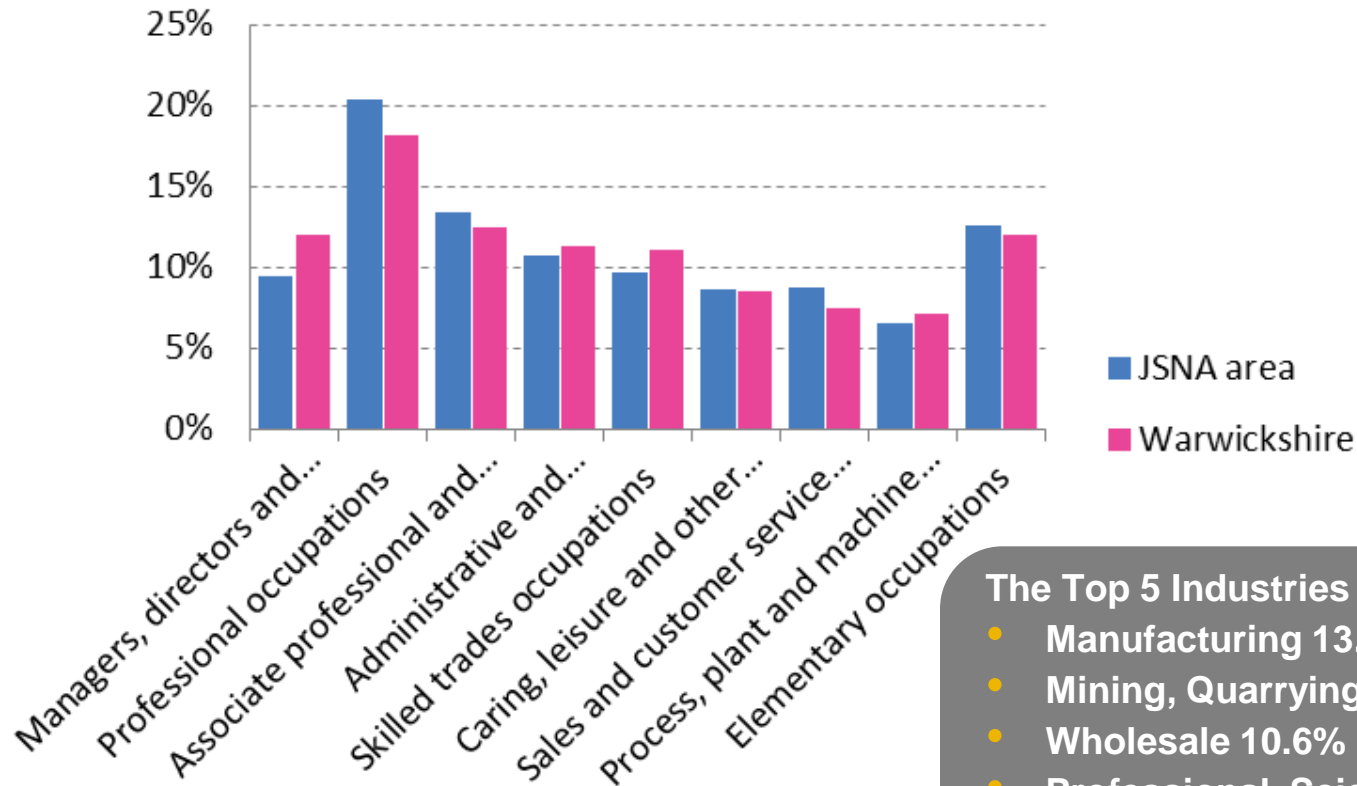
Economy & Employment

Young People without Qualifications



Economy & Employment

Occupations

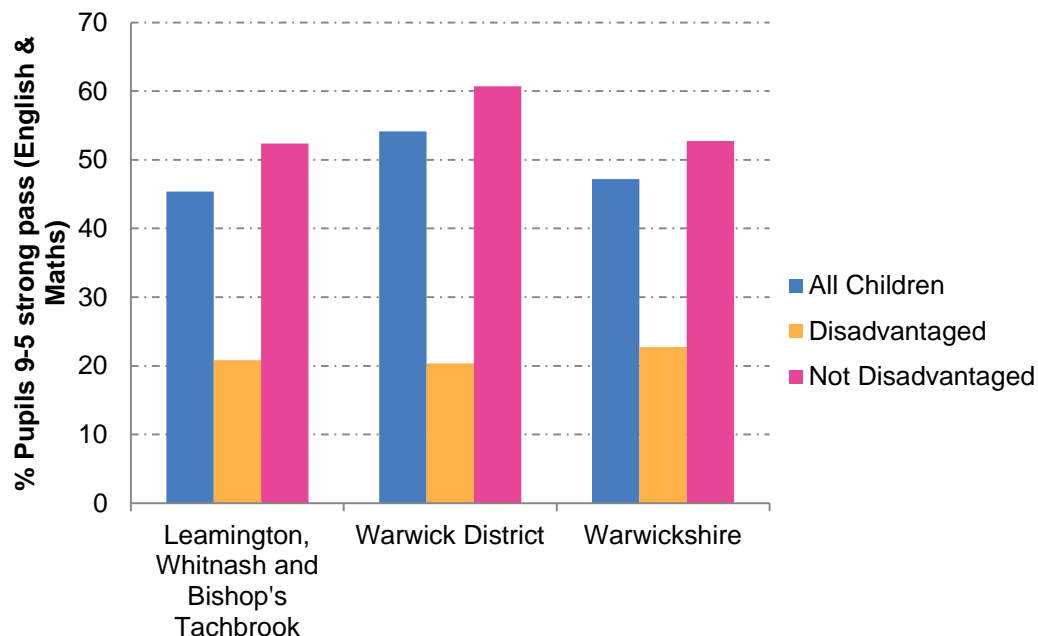


The Top 5 Industries

- Manufacturing 13.5%
- Mining, Quarrying and Utilities 12.2%
- Wholesale 10.6%
- Professional, Scientific and Technical 10.5%
- Retail 8.5%



Education and Skills



8.6%

Of pupils are eligible for
Free School Meal.
Similar to county rates
but above the district
rate of 6.9%

72.7% of all **Early Years pupils** achieved a good level of development, in line with county figures but just below the district (74.6%)

63.7% of all **Key Stage 2** children achieved the expected standard in Reading, Writing and Maths, slightly lower than the district (66.5%) and slightly higher than the county (62.0%) average

45.4% of all **Key Stage 4** students achieved the new measures of 9 to 5 (strong pass) in English and Maths, lower than both the district (54.1%) and county (47.2%) average

Disadvantaged pupils tend to perform less well the above measures - reflecting district and county patterns



Community Safety

Crime

82.0

Crime rate (per 1000 population) is slightly higher than district (76.9) and county (75.0) rates

ASB

38.7

ASB rate (per 1000 population) is higher than district (31.5) and county (30.0) rates

Domestic Violence

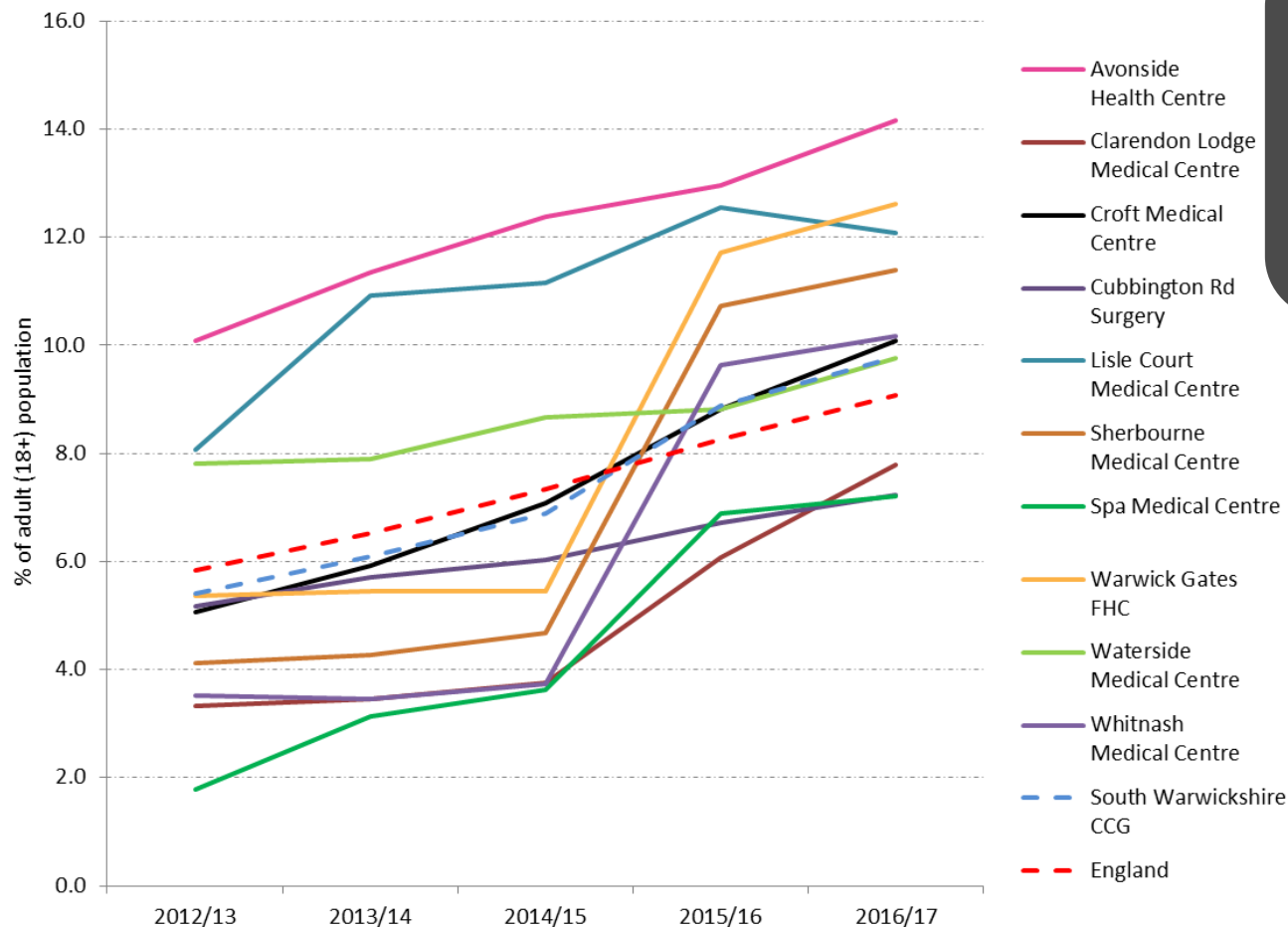
16.4

Domestic Violence rate (per 1000 population) is higher than district (12.07) and county (13.05) rates – ranks 5th out of the 22 JSNA areas



Health – Mental Health - Depression

Depression: Recorded Prevalence 2012/13 -2016/17



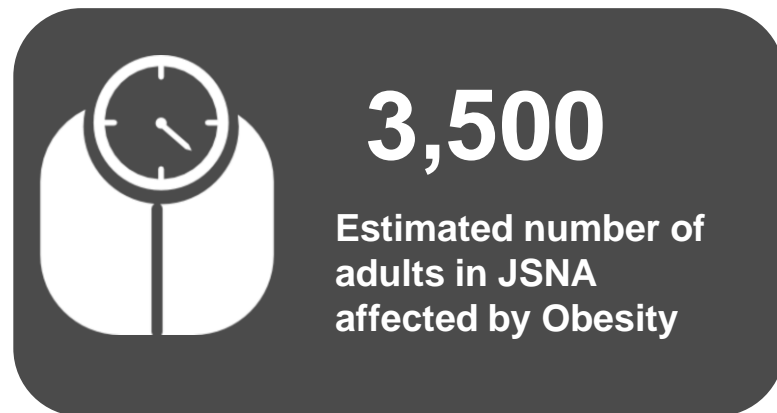
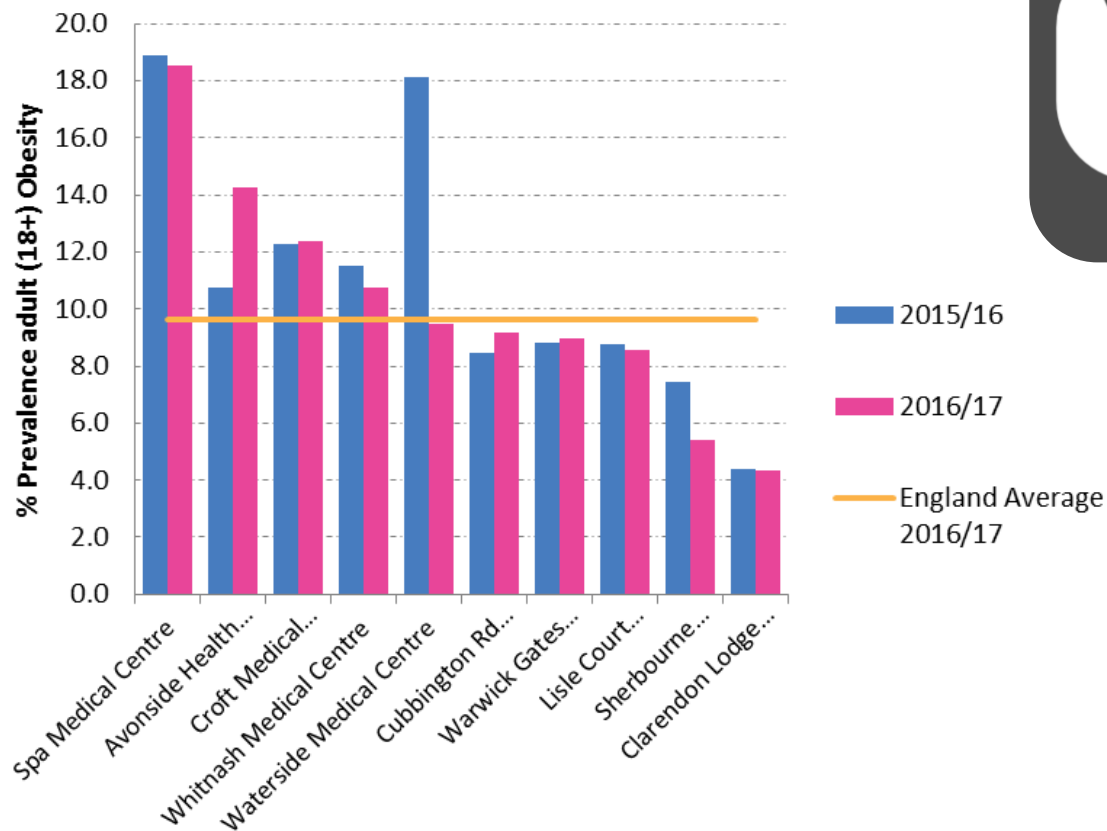
7 out of 10 GP practices record a prevalence rate significantly above the rate for England

Rates vary between 7-14%



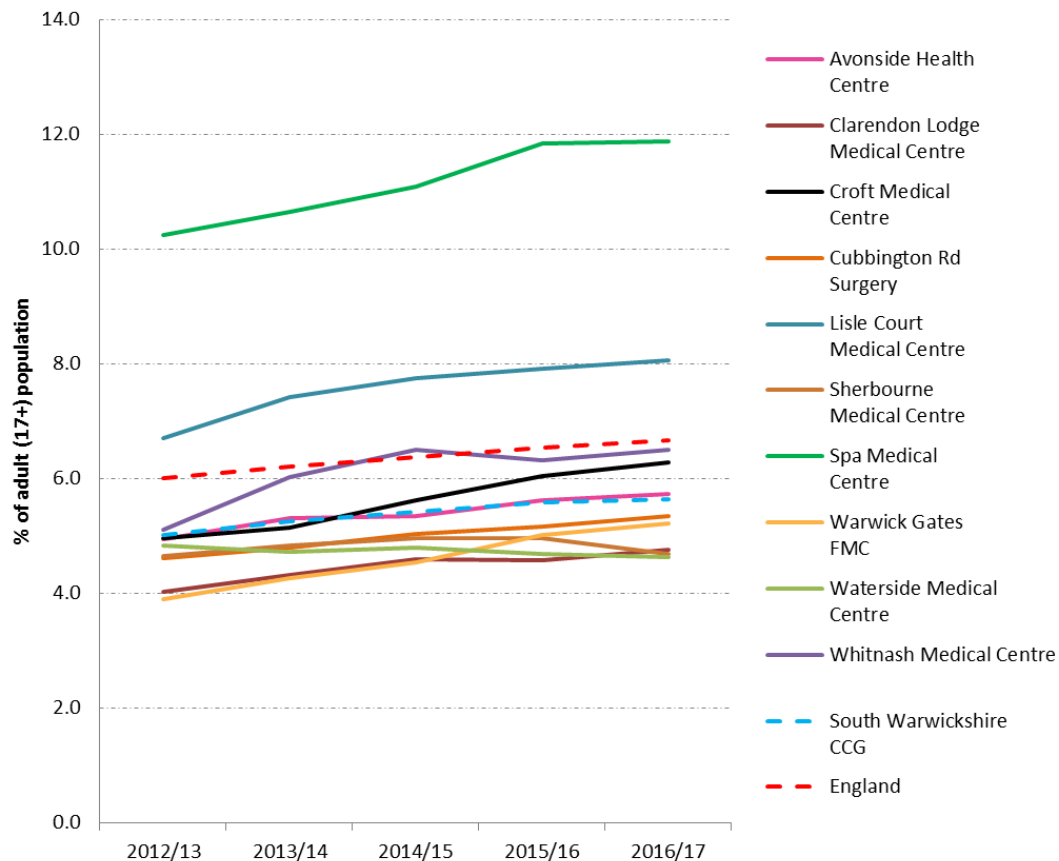
Obesity - Adults

18+ Obesity Prevalence 2015/16 and 2016/17



Diabetes

Diabetes: Prevalence 2012/13 -2016/17



General rise in diabetes prevalence over the last 5 years

Emergency admission rates for diabetes are higher in the JSNA area than Warwickshire

Estimated around 2,000 patients may experience diabetes



Health- Circulatory disease & Hypertension



Mortalities Higher for:

**Under 75 Coronary Heart
Disease Mortalities**

**Under 75 Circulatory
Mortalities**



**Emergency Admissions
Higher for:**

Coronary Heart Disease

Heart Attacks

COPD



Hypertension:

Higher in 3 GP practices

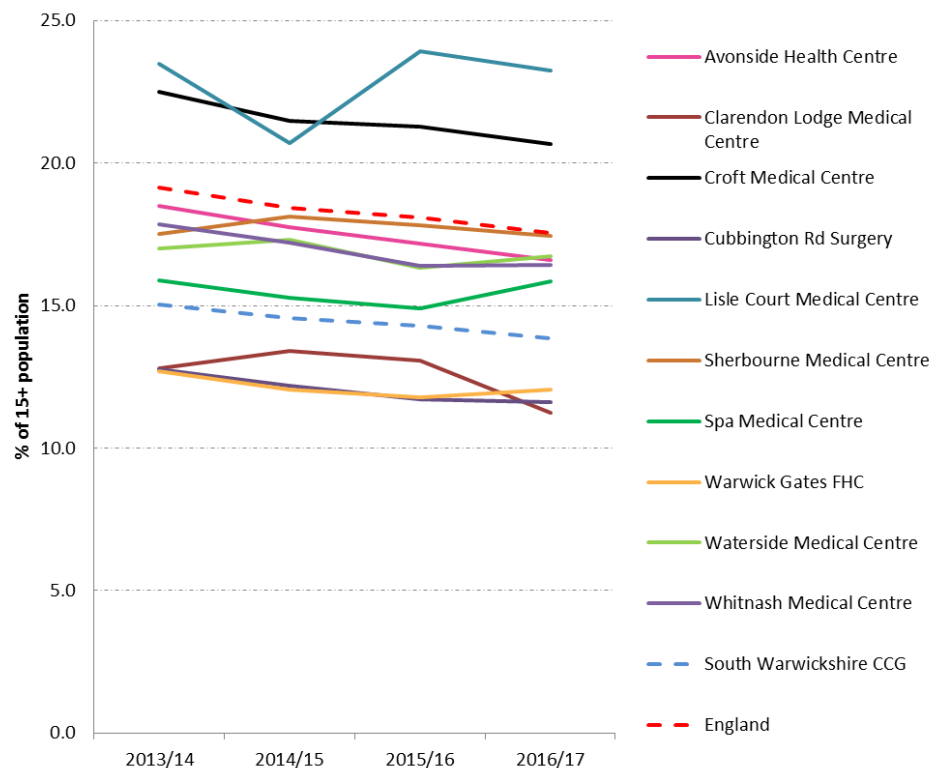
Estimated prevalence:

5,200/12.7%



Health - Smoking

15+ Smoking prevalence, 2013/14 to 2016/17



General decline in overall smoking levels

2 practices significantly above the England rate

6 practices above the SW CCG rate

Estimated JSNA prevalence 17.2% / approximately 6,000 residents



Health – Young people



0-4 year old emergency admissions are significantly higher than England rate



Higher proportion of Year 6 pupils 'very overweight' compared to Warwick District



Low Birth Weight

Low birthweight rate is in line with county.
Whitnash area records higher rates of LBW of term babies



0-4 year old emergency admissions for Injury are significantly higher than England rate



Health – Social Care headlines



3,400

Residents are recorded as providing some unpaid care each week



122

Young people (under 25) recorded as providing some unpaid care each week



A higher proportion of adult social care service users are receiving a mental health support package or Physical Disability package

55

children subject to a child protection plan - a higher rate than the district or county



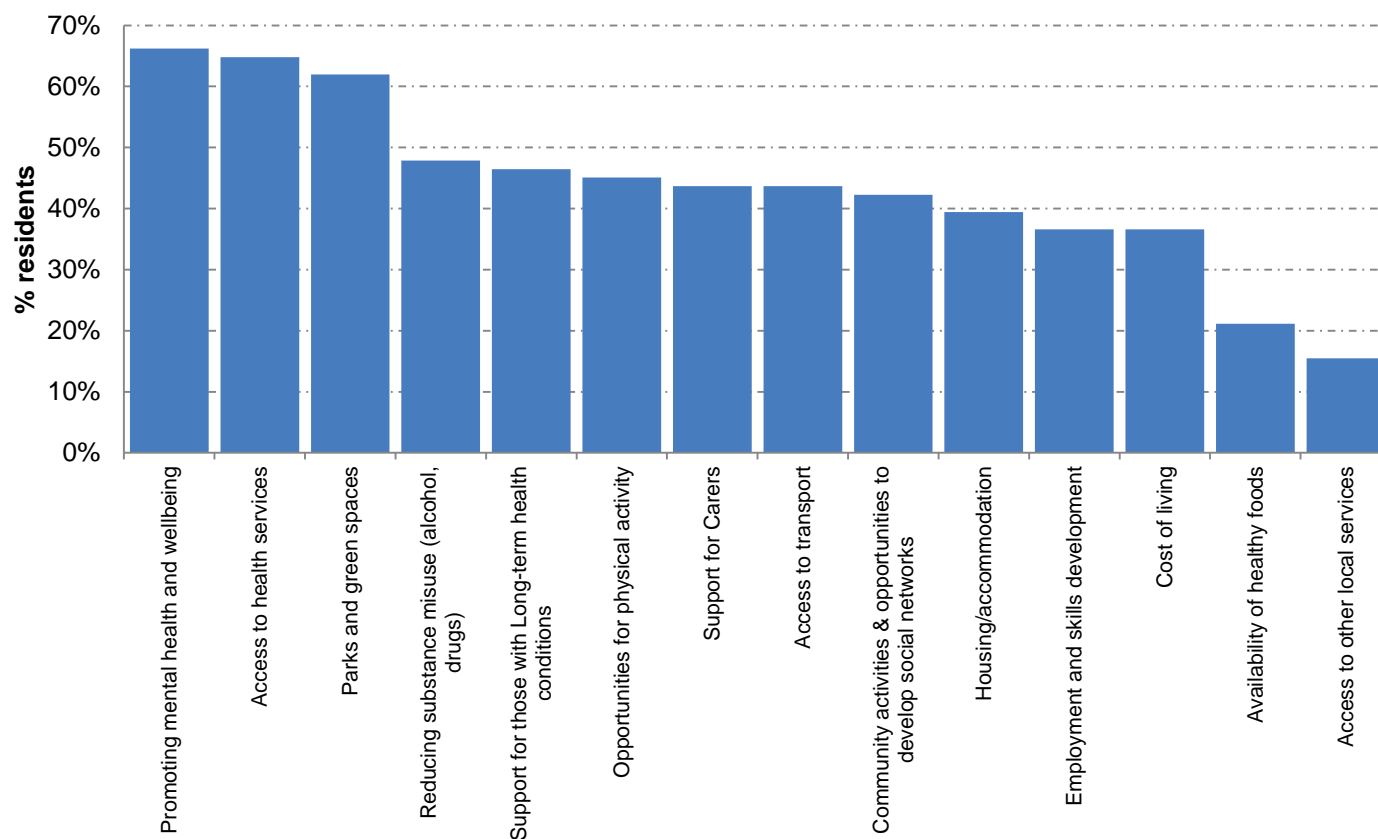
72

Children Looked After



Local Knowledge - Residents

Priorities for Health and Well-being



**Promoting
Mental Health
& Wellbeing**



**Access to
Health
Services**



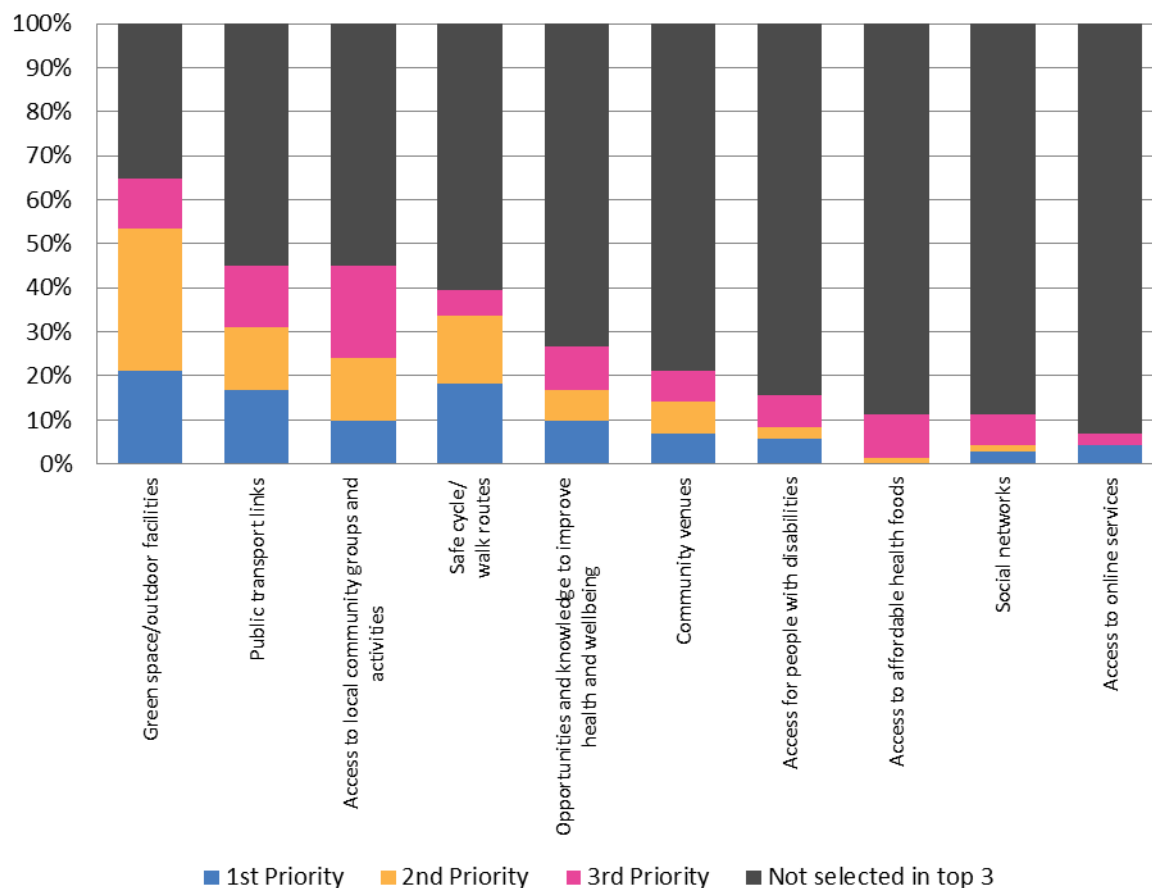
**Parks & Green
Spaces**

Source; JSNA online survey, 2018



Local Knowledge - Residents

Priorities for Health and Well-being



Most likely in top 3 priorities



Source; JSNA online survey, 2018



Local Knowledge - Professionals

Age Group	Priority 1	Priority 2	Priority 3
Parent & Infant	Initiatives to support and reduce people living in poverty	Mental health and well-being	Housing and Healthy lifestyles
Children & Young People	Mental health and well-being	Substance misuse	Community activities and opportunities to develop social networks
Working Age	Mental health and well-being	Employment and skills	Substance misuse
Older People	Mental health and well-being	Access to transport	Community activities and opportunities to develop social networks
All ages	Mental health and well-being	Healthy lifestyles/support for long term conditions/reduce people living in poverty/Access to health	Parks and greenspace/housing

Source; JSNA online survey, 2018



Local Knowledge - Professionals

Top 3 barriers to improving health and well-being

**Lack of
Funding**

**Lack of
knowledge to
improve health
and well-being**

**Lack of interest
to improve
health and
well-being**



Thank you

