

# **Secondary Headteachers' & College Principals' Briefing**

**30 June 2016**

<b>8.00</b>	<b>ARRIVAL AND REGISTRATION</b>
8.15	Welcome <b>Nigel Minns, Head of Service, Education &amp; Learning</b>
8.20	Safeguarding & MASH update <b>Beate Wagner, Head of Children's Social Care and Safeguarding</b>
8.40	React Kids <b>Sam Ferry, React Kids</b>
8.50	Public Health Update <b>Dr John Linnane Director of Public Health</b>
9.05	Consultation on the National Funding Formula – WCC's response and implications <b>Nigel Minns, Head of Service, Education &amp; Learning</b>
9.15	Headteacher Farewells <b>Nigel Minns, Head of Service, Education &amp; Learning</b>
<b>9.25</b>	<b>CLOSE</b>

The Future of School Improvement event starts at 9.30 am



# Children & Families Business Unit

SHAPING THE FUTURE

## Safeguarding & MASH update

Beate Wagner, Head of Service

Children's Social Care and Safeguarding

# New Business Unit

## Why

- Less fragmentation
- Less duplication
- More dedicated time with children and families leading to better outcomes

## What

- **Best practice**
- Joined up working

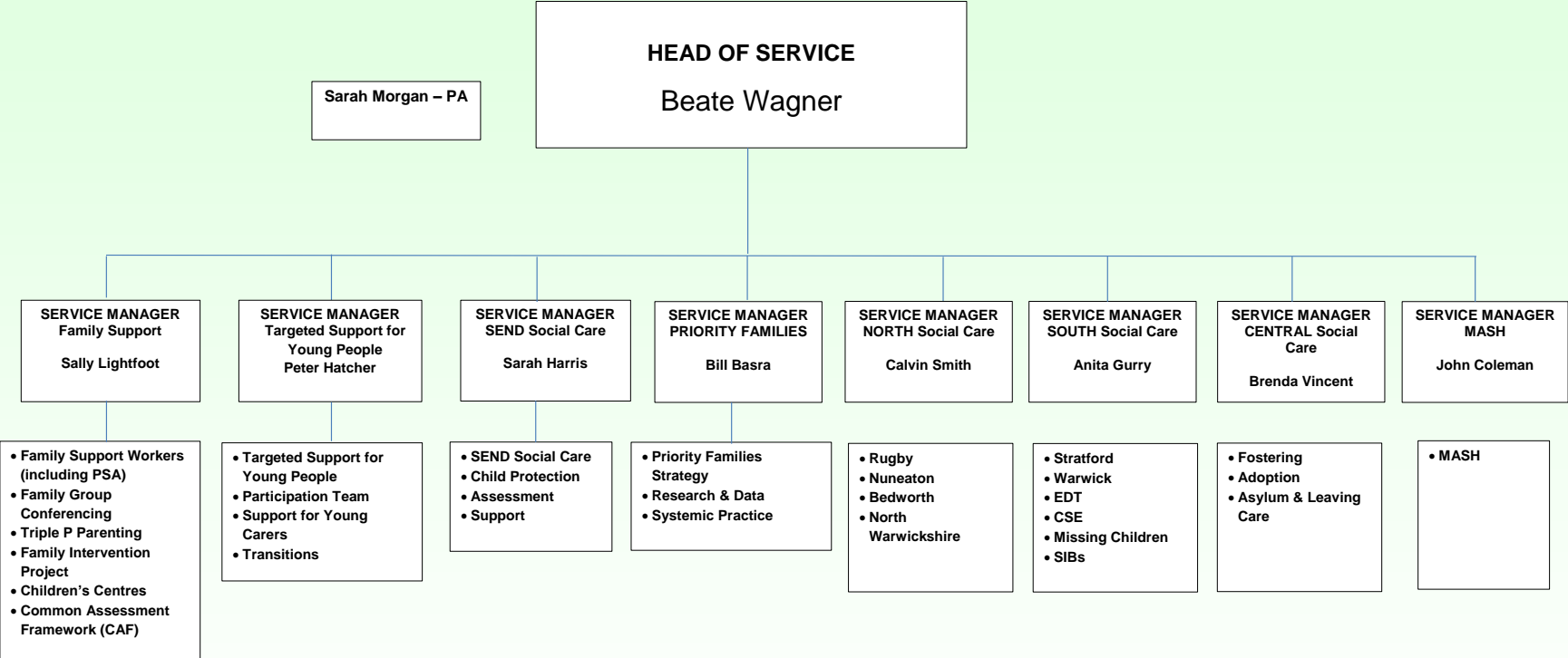
## How

- **Pathways**
- **Networks**
- A Team which celebrates its skill mix

In the most difficult financial context the authority has had to deal with

# Structure Chart

## CHILDREN & FAMILIES BUSINESS UNIT



# The Context

- Going forward, the Council has to deliver savings amounting to around 20% of its overall budget
- Council services will have to contract or deliver differently in the future – this includes an increasing focus on the most vulnerable
- The MASH currently receives 230 contacts per day, of which around 23% went to be assessed by children’s social work teams – however, discussion for advice is very much invited
- More than 20% of assessments carried out by social workers do not go beyond 10 days and more than 50% lead to involvement of less than 20 days
- Warwickshire’s rate of children looked after is about 30% higher than statistical neighbour average and more than twice the number

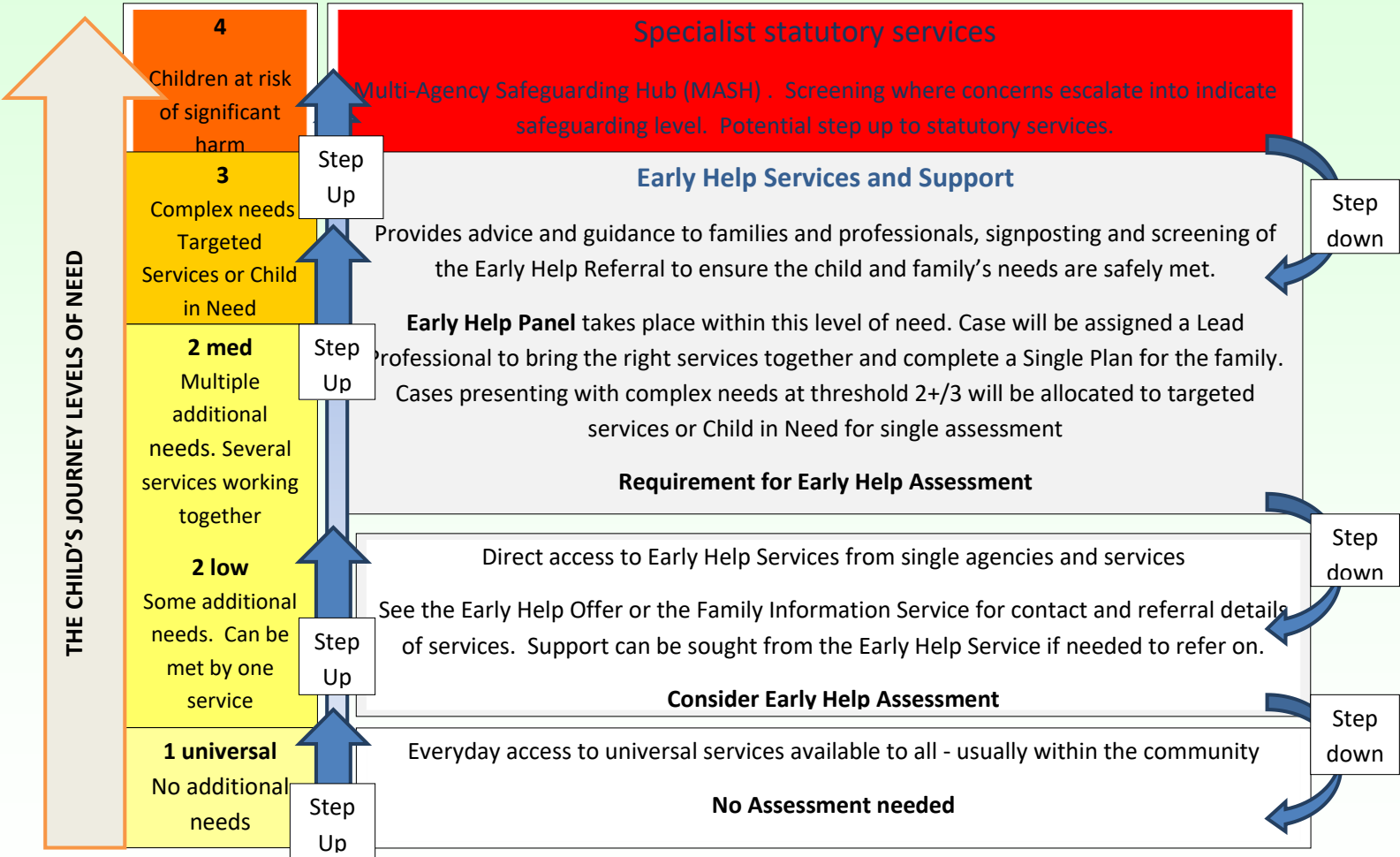
# The Vision

- Our **focus is the child** and the family and the outcomes we can help them achieve - with their voice at the centre of our engagement
- We value and make the most of **partnerships and our colleagues** and the skills they bring to the table
- We can only deliver across the system is **safeguarding is everyone's business**
- We **avoid duplication and bureaucracy** wherever we can and we want to promote a **single system for assessment and a single plan** - wherever children and young people receive help.
- We work together to safely deliver within the **context of financial constraint** and seek the opportunities as well as facing the challenges this provides

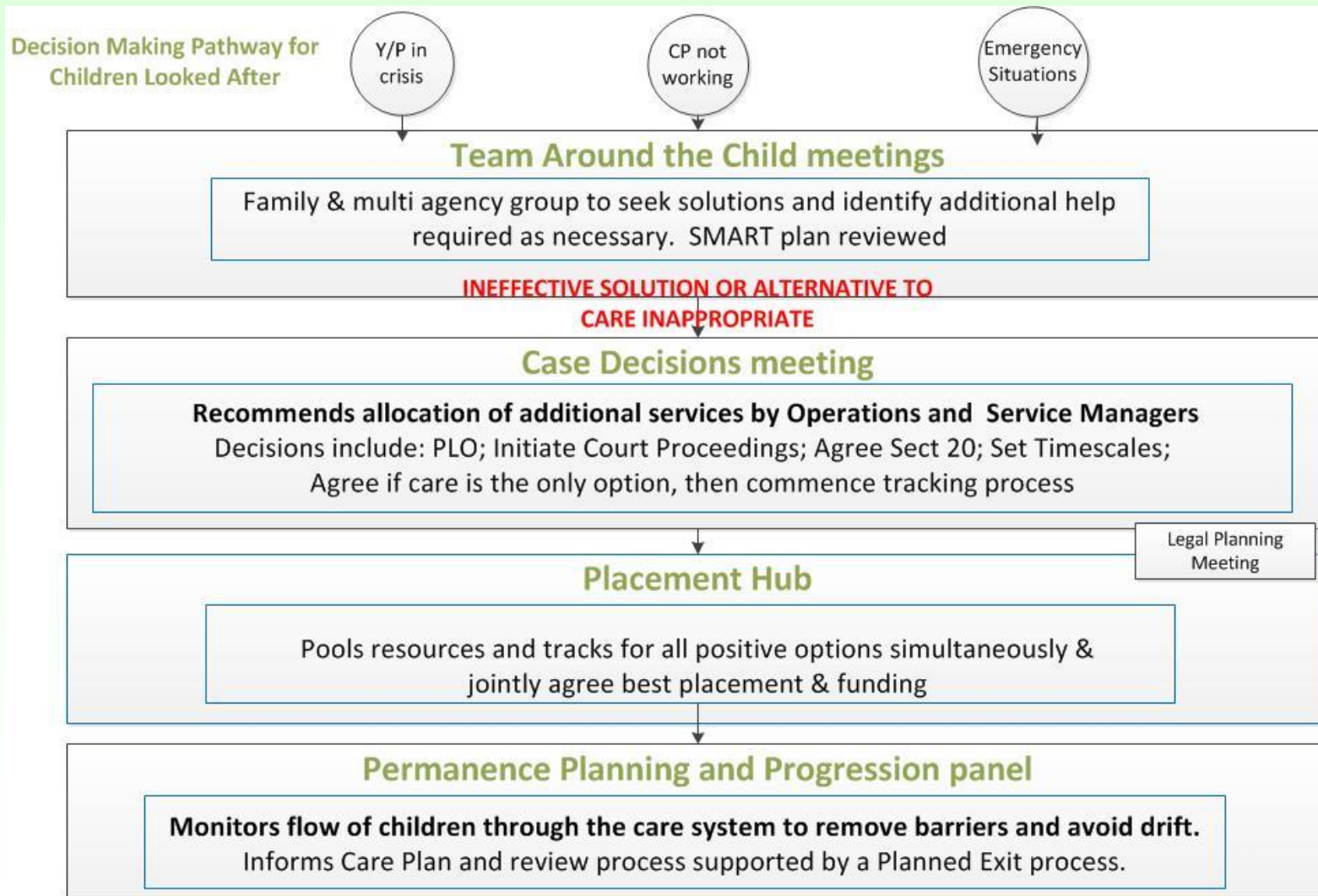
# Key Improvement Activities

1. Developing a joined up children and families **pathway for children in need of help and protection**, which proactively aims to break the cycle of poor outcomes in families - along with a range of interventions, we particularly want to focus on getting parents into work and children attending education.
2. Supporting children in their own families and where this is not possible in local alternatives - this will include a **real focus on alternatives to care for young people**, but also a drive to recruit and retain colleague foster carers to offer real placement variety and choice
3. Promoting and supporting **excellence and consistency** in the quality of practice and **making Warwickshire the best place to practice.**

# Pathways – The Child’s Journey



# Pathways – The Child’s Care Journey





# React Kids

Sam Ferry, React Kids

# Public Health update

Dr John Linnane  
Director of Public Health

# Consultation on the National Funding Formula

Nigel Minns

Head of Service, Education &  
Learning

# The Case for Change

- Funding levels historic and don't match need
- Local formulae create anomalies
- Warwickshire Schools traditionally underfunded by Government
- Schools, High Needs, Early Years

# The Government's Aim

Schools in the same circumstances and with pupils with same characteristics will attract the same funding via a national formula for schools from 2019-20

# Consultation Process

## Stage 1

- Design of the System
- Factors for the formulae
- Role of the Local Authority

## Stage 2

- Factor weightings
- Financial Impact

# What Factors may be in the Formula?

- Separate rates for primary, KS3 and KS4
- Deprivation
- Low Prior Attainment
- English as an Additional Language
- Lump sum
- Sparsity
- Business Rates
- Area Cost Adjustment

# What Factors are Contentious?

- Exceptional circumstances (PFI, split sites)
- In-year Pupil Growth
- Looked After Children
- Mobility
- MFG Flexibility
- Schools Block/High Needs Split

# Transition/Next Steps

- Stage 2 Consultation
- “Soft” Transition 2017 - 2019
- MFG continues
- Balance between winners and losers