

Warwickshire Observatory Briefing Note:

Indices of Multiple Deprivation 2015

Introduction

The new English Indices of Deprivation 2015 (IMD 2015) have recently (30/09/15) been released by the Department for Communities and Local Government. These replace the Indices of Deprivation 2010 (IMD 2010) as the official measure of deprivation in England. The Indices provide a set of relative measures of deprivation for small areas, known as Lower Layer Super-Output Area (LSOAs), across England based on seven domains of deprivation. LSOAs have an approximate population of 1,600 people and allow the identification of small pockets of deprivation. There are 339 LSOAs in Warwickshire.

The following domain scores are weighted and combined to produce an overall Index of Multiple Deprivation (IMD):

- Income Deprivation (22.5%)
- Employment Deprivation (22.5%)
- Education, Skills and Training Deprivation (13.5%)
- Health Deprivation and Disability (13.5%)
- Crime (9.3%)
- Barriers to Housing and Services (9.3%)
- Living Environment Deprivation (9.3%)

Further to the IMD and the seven domain indices, there are also two supplementary indices: the Income Deprivation Affecting Children Index (IDACI) and the Income Deprivation Affecting Older People Index (IDAOPI).

The IMD 2015 ranks all areas in England based upon their scores generated from a number of different indicators for the various types of deprivation detailed above. A low rank denotes greater deprivation. A ranking of 1 represents the most deprived area and a ranking of 32,844 represents the least deprived area nationally. The ranks allow direct comparison between other areas across the whole of England. The Indices of Deprivation were created as a measure of relative deprivation rather than absolute deprivation, therefore it cannot be used to determine 'how much' more deprived one LSOA is than another. For example, it is not possible to say that LSOA X, ranked 20th,

is twice as deprived as LSOA Y, which is ranked, 40th. However, it is possible to say that X is more deprived than Y.

The IMD 2015 are based on broadly the same methodology as the IMD 2010. Whilst it is not possible to use the Indices to measure changes in the level of deprivation in places over time, it is possible to explore changes in relative deprivation, or changes in the pattern of deprivation, between this and previous updates of the Indices.

Key Messages

At a County level, the Indices show that Warwickshire is ranked 124th out of 152 upper tier authorities in England meaning that it is amongst the 20% least deprived areas in England according to the IMD rank of average score.

Nuneaton & Bedworth Borough has the highest levels of deprivation in the County, indicated by the highest average LSOA score. The Borough ranks as the 111th most deprived Local Authority District (out of the 326 Local Authorities in England). Stratford-on-Avon District is the least deprived Local Authority District in Warwickshire with a national rank of 272nd.

Table 1: IMD Rank of average score

Local Authority District	IMD - Rank of average score (out of 326)
North Warwickshire	190
Nuneaton & Bedworth	111
Rugby	240
Stratford-on-Avon	272
Warwick	267

Source: English Indices of Deprivation 2015

Despite being the least deprived district in Warwickshire, when looking at the relative positions in the national ranking, we can see relative to other English Local Authority Districts, **Stratford-on-Avon** is **more deprived** in the most recent IMD 2015, than it was in the IMD 2010 across three of the four summary measures.



The summary measures are:

- **Average of SOA Scores** is the population weighted average of the combined scores for the SOAs in a local authority district.
- **Average of SOA Ranks** is the population weighted average of the combined ranks for the SOAs in a local authority district.
- **Extent** is the proportion of a local authority district’s population living in the most deprived SOAs in the country.
- **Local Concentration** is the population weighted average of the ranks of a district’s most deprived SOAs that contain exactly 10% of the local authority district’s population.

All other districts in Warwickshire saw improvements in their rank of average score from 2010 to 2015 relative to other national local authorities. Rugby district has seen the greatest improvement in rankings, relative to the other districts.

Table 2: Indices of Deprivation 2010 & 2015 - Comparison of Relative Rankings

Name	Rank of Average Score	Rank of Average Rank	Rank of Extent	Rank of Local Concentration
North Warwickshire	-8	-7	4	1
Nuneaton & Bedworth	-3	5	-8	-22
Rugby	-21	-19	-44	-41
Stratford-on-Avon	6	8	-8	6
Warwick	-10	-9	-10	-12

Key:  Relatively More Deprived (Deterioration in rankings)
 Relatively Less Deprived (Improvement in rankings)

Source: English Indices of Deprivation 2015

There have been notable improvements in three out of five Districts/Boroughs in terms of rank of local concentration. This particular measure identifies authorities containing ‘hotspots’ of extreme deprivation by using a population weighted average of the ranks of a district’s most deprived LSOAs.




These LSOAs comprise of precisely 10% of the district’s population. In this measure, Rugby Borough has improved 41 places from the 2010 Index. North Warwickshire and Stratford-on-Avon district have slipped by one and six places respectively.

There are eight LSOAs in Warwickshire ranked within the top 10% most deprived LSOAs nationally on the overall IMD 2015. Six of these eight are located within Nuneaton & Bedworth Borough, one within Warwick District and the other within North Warwickshire Borough. This compares with nine LSOAs ranked within the top 10% most deprived LSOAs in the IMD 2010, all of which were located within Nuneaton & Bedworth Borough.

Table 3: Indices of Deprivation 2010 & 2015 - Comparison of Relative Rankings of Warwickshire’s Most Deprived Areas

Super Output Area	District	IMD 2010 Rank	IMD 2015 Rank	Change in National Ranks 2010-2015
Mancetter South & Ridge Lane	North Warks	6,294	3,225	-3,069
Camp Hill Village & West	Nun & Bed	Change in LSOA boundaries	1,485	n/a
Abbey Town Centre	Nun & Bed	1,478	2,253	775
Bar Pool North & Crescents	Nun & Bed	492	466	-26
Kingswood Grove Farm & Rural	Nun & Bed	1,335	1,636	301
Middlemarch & Swimming Pool	Nun & Bed	1,689	2,257	568
Hill Top	Nun & Bed	2,672	3,122	450
Lillington East	Warwick	4,358	2,841	-1,517
Atherstone Central-Centre	North Warks	4,866	5,445	579
Camp Hill East & Quarry	Nun & Bed	Change in LSOA boundaries	4,360	n/a
Abbey North	Nun & Bed	8,127	4,370	-3,757
Abbey Priory	Nun & Bed	2,648	4,256	1,608
Kingswood Stockingford Schools	Nun & Bed	7,098	5,764	-1,334
Riversley	Nun & Bed	4,031	4,963	932
Bede Cannons	Nun & Bed	6,035	5,000	-1,035
Bede East	Nun & Bed	3,539	3,966	427
Poplar Coalpit Field	Nun & Bed	5,787	5,092	-695
Brownsover South Lake District North	Rugby	3,314	5,627	2,313

Key:

-  Top 10% Most Deprived LSOAs nationally
-  Top 10-20% Most Deprived LSOAs nationally
-  Top 20-30% Most Deprived LSOAs nationally



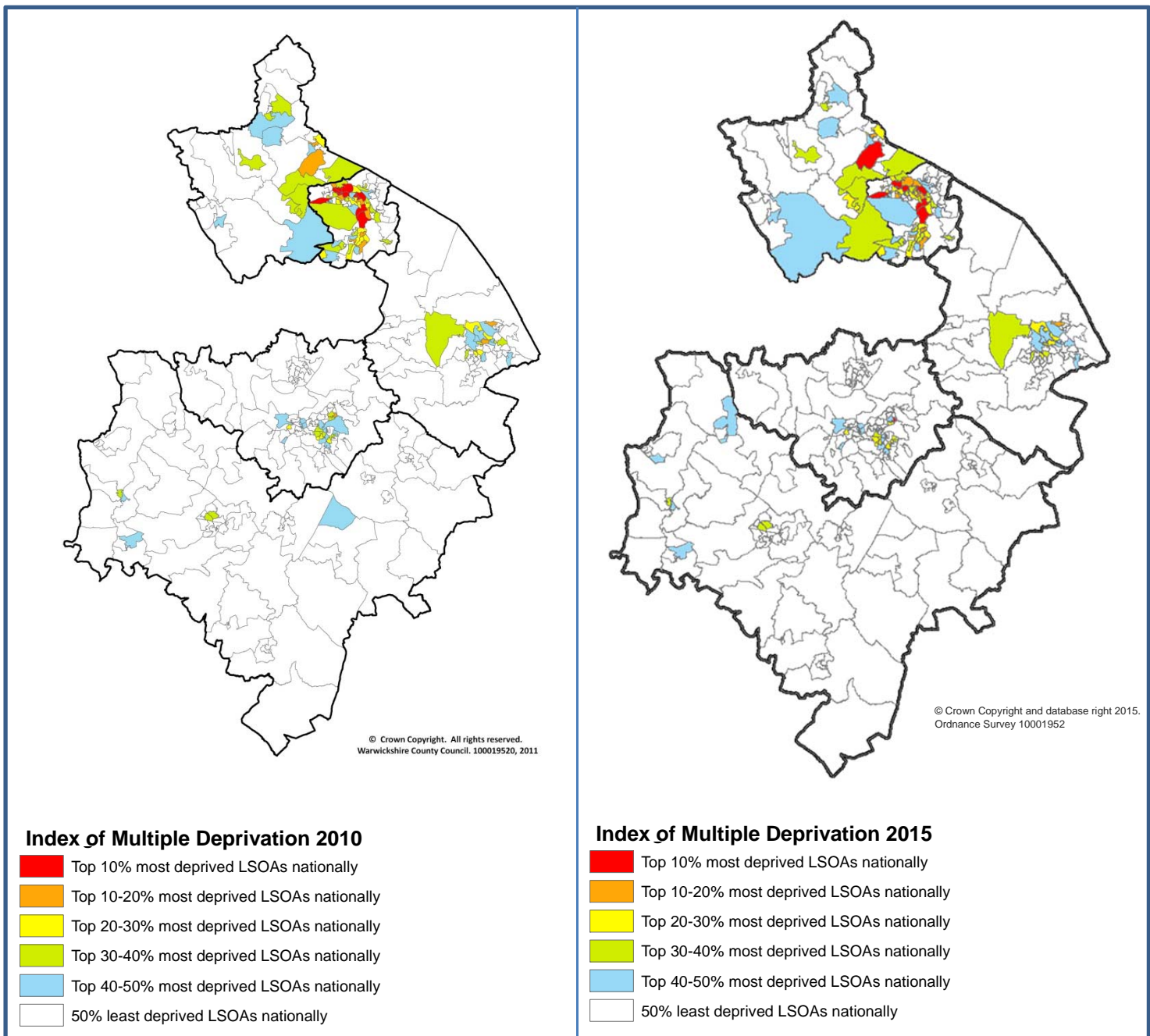
-  Relatively More Deprived (Deterioration in rankings)
-  Relatively Less Deprived (Improvement in rankings)

Table 3 shows there has been some movement in the national rankings between the worst ranking Warwickshire LSOAs. Mancetter South & Ridge Lane in North Warwickshire has seen the greatest deterioration in the rankings, relative to other LSOAs. Despite Brownsover South Lake District North seeing an improvement in the rankings from the 2010 IMD, this LSOA still remains in the top 20-30% most deprived LSOAs nationally. The reason for declines in the rankings is not absolute. Reasons for change in rankings are all relative; it may be that deprivation levels in Warwickshire have remained static whilst in other areas of the UK they are improving. It may be because there are real increases in deprivation in certain neighbourhoods.



The maps above illustrate the geographical spread of deprivation across the County. Readers should not get distracted by the larger, rural, LSOAs as many of the key issues are located within the smaller urban areas – each LSOA contains approximately the same population. We can see from the above maps that the same areas are coming out as the ‘most’ or ‘least’ deprived, with deprivation at its peak in urban areas. We can also see from the map that there are small pockets of deprivation, in all districts within Warwickshire.

Bar Pool North and Crescents in Nuneaton & Bedworth was once again the most deprived LSOA in the County. This area is ranked as the 466th most deprived LSOA out of 32,844 LSOAs in England, meaning this area falls within the top 2% most deprived LSOAs nationally.

As previously mentioned the IMD uses seven different domains to give an overall index.

Health Deprivation and Disability

This domain covers the risk of premature death and the impairment of quality of life through either poor physical and/or mental health.

At a county level, the Indices show that Warwickshire health is ranked 103rd out of 152 upper tier authorities in England meaning that it is amongst the third healthiest areas in England according to the Health Deprivation and Disability rank of average score.

At lower tier local authority level, on this measure, Nuneaton & Bedworth has the poorest health ranked 92nd out of 326 districts. Stratford-on-Avon’s health deprivation and disability rank of average score is the best in Warwickshire at 235th. However, across the five districts and boroughs in Warwickshire, the health rankings on this measure are lower than the rankings of average deprivation score suggesting that health generally in Warwickshire is poorer than would be expected.

Table 4: Indices of Deprivation 2015- Health domain

Name	Rank of average Score	Rank of average rank	Proportion of LSOAs in most deprived 10% nationally	Rank of proportion of LSOAs in most deprived 10% nationally
North Warwickshire	159	162	0	173
Nuneaton & Bedworth	92	92	0.049	106
Rugby	207	214	0	173
Stratford-on-Avon	235	244	0	173
Warwick	199	195	0	173

District rankings: 1 = poorest health, 326 = best health

Source: English Indices of Deprivation 2015

At a Clinical Commissioning Group (CCG) level, Coventry & Rugby CCG (71st) has the poorest the Health Deprivation and Disability rank of average score of the 209 CCGs across England reflecting it having largest proportion of LSOAs in the most 10% deprived nationally. Whereas, South Warwickshire CCG is ranked 162nd on this measure.

Table 5: Indices of Deprivation 2015- Health domain by Clinical Commissioning Group

Name	Rank of average Score	Rank of average rank	Proportion of LSOAs in most deprived 10% nationally	Rank of proportion of LSOAs in most deprived 10% nationally
Coventry & Rugby CCG	71	76	0.141	53
South Warwickshire CCG	162	167	0	158
Warwickshire North CCG	94	94	0.034	106

District rankings: 1 = poorest health, 209 = best health

Source: English Indices of Deprivation 2015

Income Deprivation

This domain measures deprivation relating to low income. At County level Warwickshire is ranked 127th out of 152 upper-tier local authorities for this domain, meaning it is within the third least deprived areas for income deprivation.

At LSOA level there are seven areas within Warwickshire ranked within the top 10% most deprived for this domain. This compares with six LSOAs in the IMD 2010. Six of these areas are located within Nuneaton and Bedworth Borough, with the other LSOA located within Warwick district. In 2010 all of the LSOAs featuring in the top 10% most deprived for this domain were located within Nuneaton and Bedworth. Abbey Town centre was previously in the top 10% for this domain, but now features in the top 10-20%. Lillington East and Hill Top, whilst not featuring in the top 10% for this domain in the IMD 2010, do feature in the top 10% for this domain in the IMD 2015. There are no LSOAs from Stratford-on-Avon, Rugby and North Warwickshire ranked in the top 10% most deprived areas nationally for this domain.

Table 6: Indices of Deprivation 2015- Top 10% most deprived LSOAs for the Income domain

LSOA Name	District	National Rank
Bar Pool North & Crescents	Nun & Bed	446
Camp Hill Village & West	Nun & Bed	1,253
Middlemarch & Swimming Pool	Nun & Bed	1,440
Kingswood Grove Farm & Rural	Nun & Bed	1,647
Hill Top	Nun & Bed	2,137
Lillington East	Warwick	2,835
Bede East	Nun & Bed	2,947

Employment Deprivation

The employment domain measures the proportion of the working-age population involuntarily excluded from the labour market per LSOA. The reason for exclusion from the labour market may be due to unemployment, sickness or disability, or caring responsibilities.

At County level Warwickshire is ranked 125th out of 152 upper-tier local authorities for this domain, meaning it is within the third least deprived areas for employment deprivation.

There were 15 LSOAs within Warwickshire ranked within the top 10% most deprived nationally for this domain in the IMD 2010; this figure has reduced to seven in the most recent IMD 2015. The seven LSOAs which feature in the top 10% IMD 2015 for this domain, also featured in the top 10% for the same domain in the IMD 2010. There are no LSOAs from Stratford-on-Avon, Rugby and North Warwickshire ranked in the top 10% most deprived areas nationally for this domain.

Table 7: Indices of Deprivation 2015- Top 10% most deprived LSOAs for the Employment domain

LSOA Name	District	National Rank
Bar Pool North & Crescents	Nun & Bed	1,204
Middlemarch & Swimming Pool	Nun & Bed	1,819
Kingswood Grove Farm & Rural	Nun & Bed	1,890
Lillington East	Warwick	1,444
Bede East	Nun & Bed	3,135
Abbey Town Centre	Nun & Bed	2,113
Bede Cannons	Nun & Bed	2,391

Education, Skills and Training Development

This domain looks at the lack of attainment and skills within the local population. The indicators are composed of two sub-domains: one relating to education deprivation for children/young people in the area, and one relating to lack of skills and qualifications among a sub-set of the working age adult population.

At County level Warwickshire is ranked 108th out of 152 upper-tier local authorities for this domain, meaning it is within the third least deprived areas for education, skills and training development deprivation.

There has been a decrease in the number of Warwickshire LSOAs ranked within the top 10% most deprived areas nationally for this domain, from 25 in the IMD 2010 to 18 in the IMD 2015. Previously there were 15 LSOAs from Nuneaton & Bedworth, three from Warwick, four from North Warwickshire, two from Rugby and one from Stratford-on-Avon, featuring in the top 10% most deprived areas for this domain in the IMD 2010. This had now changed to ten LSOAs from Nuneaton & Bedworth, four from North Warwickshire, two from Warwick and two from Rugby. There are no LSOAs from Stratford-on-Avon district ranked in the top 10% most deprived areas nationally for this

domain. Camp Hill Village & West is within the top 0.25% most deprived areas nationally for this domain and Bar Pool North and Crescents is within the top 0.5% most deprived. Mancetter South and Ridge Lane is also within the top 2% most deprived.

Table 8: Indices of Deprivation 2015- Top 10% most deprived LSOAs for the Education, Skills and Training Development domain

LSOA Name	District	National Rank
Bar Pool North & Crescents	Nun & Bed	143
Middlemarch & Swimming Pool	Nun & Bed	1,692
Kingswood Grove Farm & Rural	Nun & Bed	488
Hill Top	Nun & Bed	2,928
Lillington East	Warwick	944
Bede East	Nun & Bed	1,876
Camp Hill Village & West	Nun & Bed	71
Camp Hill East & Quarry	Nun & Bed	1,060
Mancetter South and Ridge Lane	North Warks	367
Brownsover South Lake District North	Rugby	1,664
Atherstone Central - Centre	North Warks	1,517
Kingswood Stockingford Schools	Nun & Bed	2,631
Newbold on Avon	Rugby	2,795
Packmores West & The Cape	Warwick	2,938
Bede North	Nun & Bed	3,041
Bar Pool West & Recreation Ground	Nun & Bed	2,920
Atherstone North - St. Georges and Carlyon	North Warks	1,702
Dordon Village	North Warks	2,203

Crime Domain

The crime domain measures the risk of personal and material victimisation per LSOA. At County level Warwickshire is ranked 103rd out of 152 upper-tier local authorities for this domain, meaning it is within the third least deprived areas for Crime.

There were 20 LSOAs from Warwickshire to feature in the top 10% most deprived areas nationally for this domain in the IMD 2010. Fifteen of these LSOAs were located within Nuneaton & Bedworth; four were located in Warwick and one within Rugby. In the IMD 2015, this figure has reduced to 13,

with 11 of these LSOAs located within Nuneaton & Bedworth, one within Warwick and one within North Warwickshire. There are no LSOAs from Stratford-on-Avon district or Rugby Borough ranked in the top 10% most deprived areas nationally for this domain. Abbey Priory is ranked within the top 0.2% most deprived areas for this LSOA.

Table 9: Indices of Deprivation 2015- Top 10% most deprived LSOAs for the Crime domain

LSOA Name	District	National Rank
Bar Pool North & Crescents	Nun & Bed	1,009
Hill Top	Nun & Bed	3,089
Camp Hill Village & West	Nun & Bed	2,315
Abbey Town Centre	Nun & Bed	591
Abbey Priory	Nun & Bed	56
Attleborough North West	Nun & Bed	2,690
Bar Pool West & Recreation Ground	Nun & Bed	2,374
Galley Common South East	Nun & Bed	1,188
Bar Pool East & Greenmoor	Nun & Bed	2,862
Abbey West	Nun & Bed	1,751
Poplar North West	Nun & Bed	2,541
Milverton South East	Warwick	2,328
Corley	North Warks	1,847

Barriers to Housing and Services

This domain looks at barriers to housing and key local services. Specifically it measures the physical and financial accessibility of housing and local services. The indicators comprise of two sub-domains: 'geographical barriers', which considers the physical proximity of local services and 'wider barriers' which considers issues relating to access to housing, such as affordability.

At County level Warwickshire is ranked 80th out of 152 upper-tier local authorities for this domain.

There are 32 LSOAs within Warwickshire ranked within the top 10% most deprived areas nationally for this domain; this is an increase of two LSOAs from the IMD 2010. In the IMD 2010 17 of the LSOAs were located within Stratford-on-Avon, five within Warwick, four within Rugby and three within North Warwickshire. In the IMD 2015, 14 of the top 10% most deprived LSOAs for this domain are located within Stratford-on-Avon (four less than the IMD 2010), seven are located within Rugby, another six are located within Warwick, with a further four located within North

Warwickshire and one within Nuneaton & Bedworth. Long Compton in Stratford is ranked within the top 0.5% worst performing LSOAs nationally for this indicator.

Table 10: Indices of Deprivation 2015- Top 10% most deprived LSOAs for the barriers to Housing and Services domain

LSOA Name	District	National Rank
Corley	North Warks	1,718
Church Lawford, Kings Newnham & Long Lawford North	Rugby	3,097
Fillongley and The Packingtons	North Warks	1,894
Arbury Rural	Nun & Bed	2,825
Fosse West	Rugby	1,623
Lapworth South, Bushwood, Lowsonford & Rowington	Warwick	3,277
Bardon	Stratford	1,086
Wolvey	Rugby	3,080
Ladbroke & Priors	Stratford	816
Bubbenhall, Wappenbury, Weston & Eathorpe	Warwick	669
New Arley South and Over Whitacre	North Warks	2,952
Fosse East	Rugby	849
Marston and Water Park	North Warks	2,502
Tanworth	Stratford	2,082
Leam Valley	Rugby	400
Newbold-on-Stour, Ilmington East & Whitchurch	Stratford	2,710
Leek Wootton, Guys Cliffe & Beausale	Warwick	3,087
Offchurch & Hunningham	Warwick	3,244
Moreton Morrell, Ashorne & Newbold Pacey	Stratford	2,614
Wroxhall, Hasely & Honiley	Warwick	1,333
Stoneleigh	Warwick	524
Welford	Stratford	2,224
Easenhall, Newton & Biggin and Harborough Magna	Rugby	1,657
Claverdon	Stratford	2,313
Princethorpe, Marton, Frankton, Bourton & Draycote	Rugby	1,964
Hampton Lucy & Fulbrook	Stratford	1,751
Brailes	Stratford	910
Long Compton	Stratford	126
Burton Dassett	Stratford	856
Wellesbourne South	Stratford	3,144
Vale of the Red Horse	Stratford	1,851
Ettington	Stratford	1,879

Living Environment Domain

This domain focuses on the quality of the local environment. This domain is made up of two sub-domains: the ‘indoors’ living environment which measures the quality of housing, and the ‘outdoors’ living environment which contains two measures about air quality and road traffic accidents.

At County level Warwickshire is ranked 96th out of 152 upper-tier local authorities for this domain, meaning it is just outside the third least deprived areas for living environment deprivation.

In the IMD 2010 only one LSOA (Abbey Priory, Nuneaton & Bedworth) within Warwickshire featured in the top 10% most deprived areas nationally for this domain, this figure has increased to 11 in the IMD 2015. Five of the LSOAs ranked in the top 10% most deprived for this domain are located within Warwick district, four are located within Stratford-on-Avon district and a further two are located within Nuneaton & Bedworth borough.

Table 11: Indices of Deprivation 2015- Top 10% most deprived LSOAs for the Living Environment Deprivation domain

LSOA Name	District	National Rank
Abbey Town Centre	Nun & Bed	3,279
Abbey Priory	Nun & Bed	2,150
Old Town & Town Centre South	Stratford	2,648
Milverton South East	Warwick	1,084
Town Centre North	Stratford	1,628
Lapworth South, Bushwood, Lowsonford & Rowington	Warwick	1,936
Brailes	Stratford	2,813
Burton Dassett	Stratford	2,971
Wroxhall, Hasely & Honiley	Warwick	1,412
Leamington Town Centre 1	Warwick	1,631
Leamington Town Centre 2	Warwick	1,505

Further Information

For further information on the Indices of Deprivation, please contact the Warwickshire Observatory:

E-mail: research@warwickshireobservatory.org

Website: www.warwickshireobservatory.org